

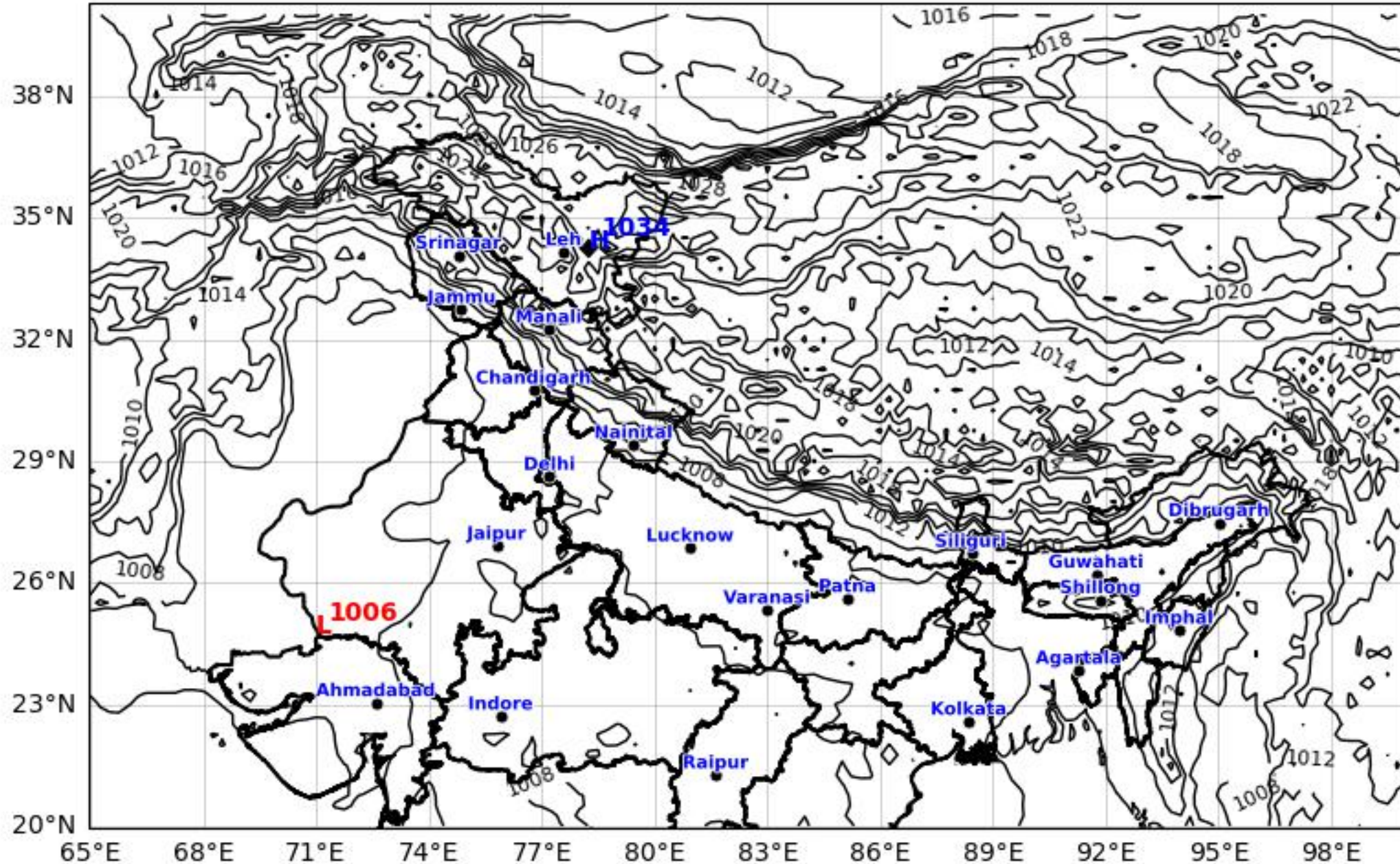


# MSL Analysis Map North & Eastern Region

ECMWF run 06 May 2026 00Z



KOLA - North & East by gujaratweather.com - Data: ECMWF  
KOLA: Kathiawar Ocean & Land Atmosphere - Experimental Weather Mapping Platform



Disclaimer: The images provided by gujaratweather.com are experimental and for informational purposes only. They are not official forecasts. We do not guarantee the accuracy, timeliness, or completeness of these images, which may contain errors due to data download scripts or software limitations. For reliable weather forecasts, Please refer to official agencies such as Indian Meteorological Department or ECMWF. The base map shown does not represent political boundaries.



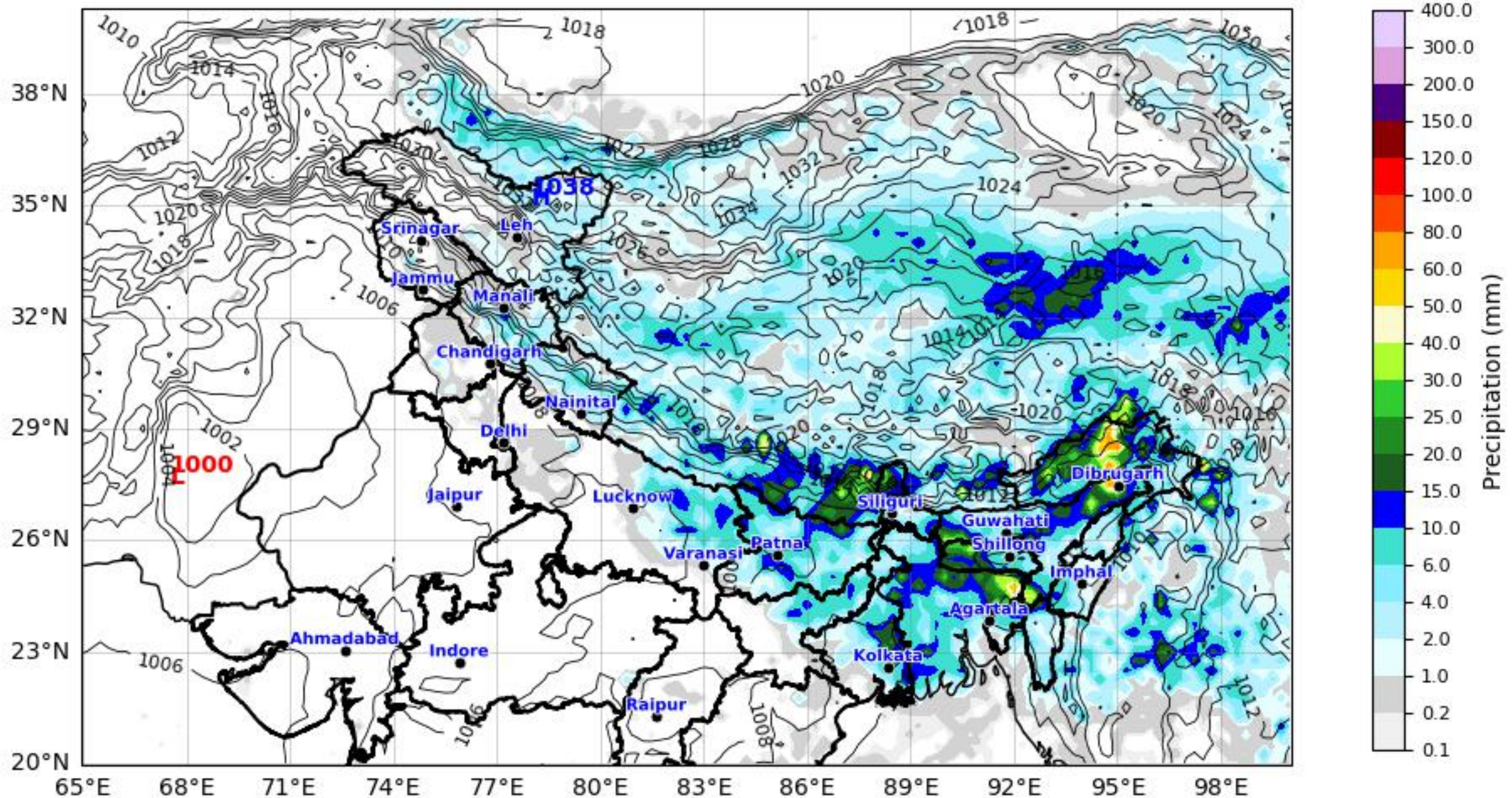
# Daily Precipitation Forecast (24 HR) North & Eastern Region



ECMWF Run 06 May 2026 00Z valid for 07 May 2026 00Z

KOLA - North & East by gujaratweather.com - Data: ECMWF

KOLA: Kathiawar Ocean & Land Atmosphere - Experimental Weather Mapping Platform



Disclaimer: The images provided by gujaratweather.com are experimental and for informational purposes only. They are not official forecasts. We do not guarantee the accuracy, timeliness, or completeness of these images, which may contain errors due to data download scripts or software limitations. For reliable weather forecasts, Please refer to official agencies such as Indian Meteorological Department or ECMWF. The base map shown does not represent political boundaries.



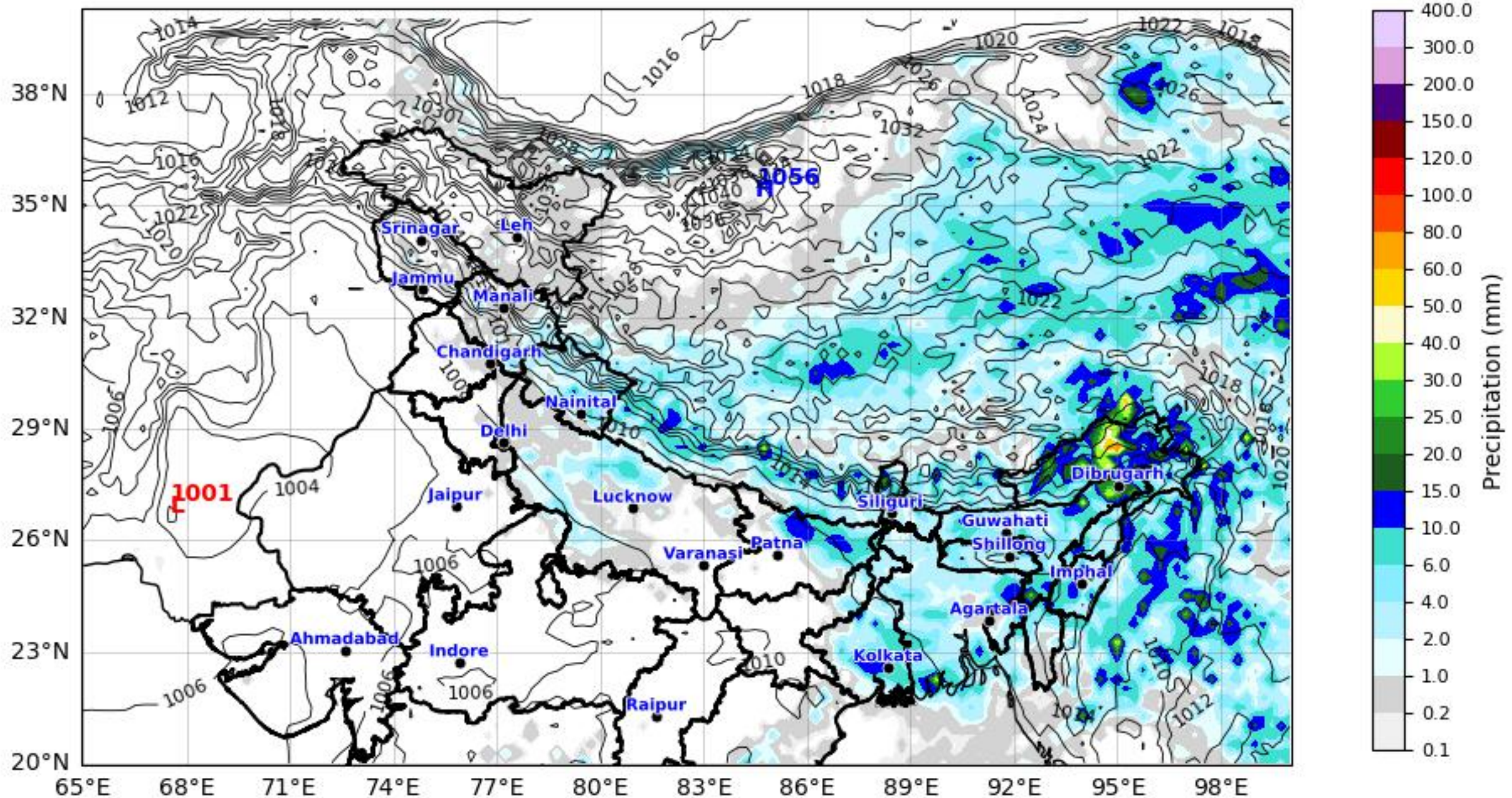
# Daily Precipitation Forecast (48 HR) North & Eastern Region



ECMWF Run 06 May 2026 00Z valid for 08 May 2026 00Z

KOLA - North & East by gujaratweather.com - Data: ECMWF

KOLA: Kathiawar Ocean & Land Atmosphere - Experimental Weather Mapping Platform



Disclaimer: The images provided by gujaratweather.com are experimental and for informational purposes only. They are not official forecasts. We do not guarantee the accuracy, timeliness, or completeness of these images, which may contain errors due to data download scripts or software limitations. For reliable weather forecasts, Please refer to official agencies such as Indian Meteorological Department or ECMWF. The base map shown does not represent political boundaries.



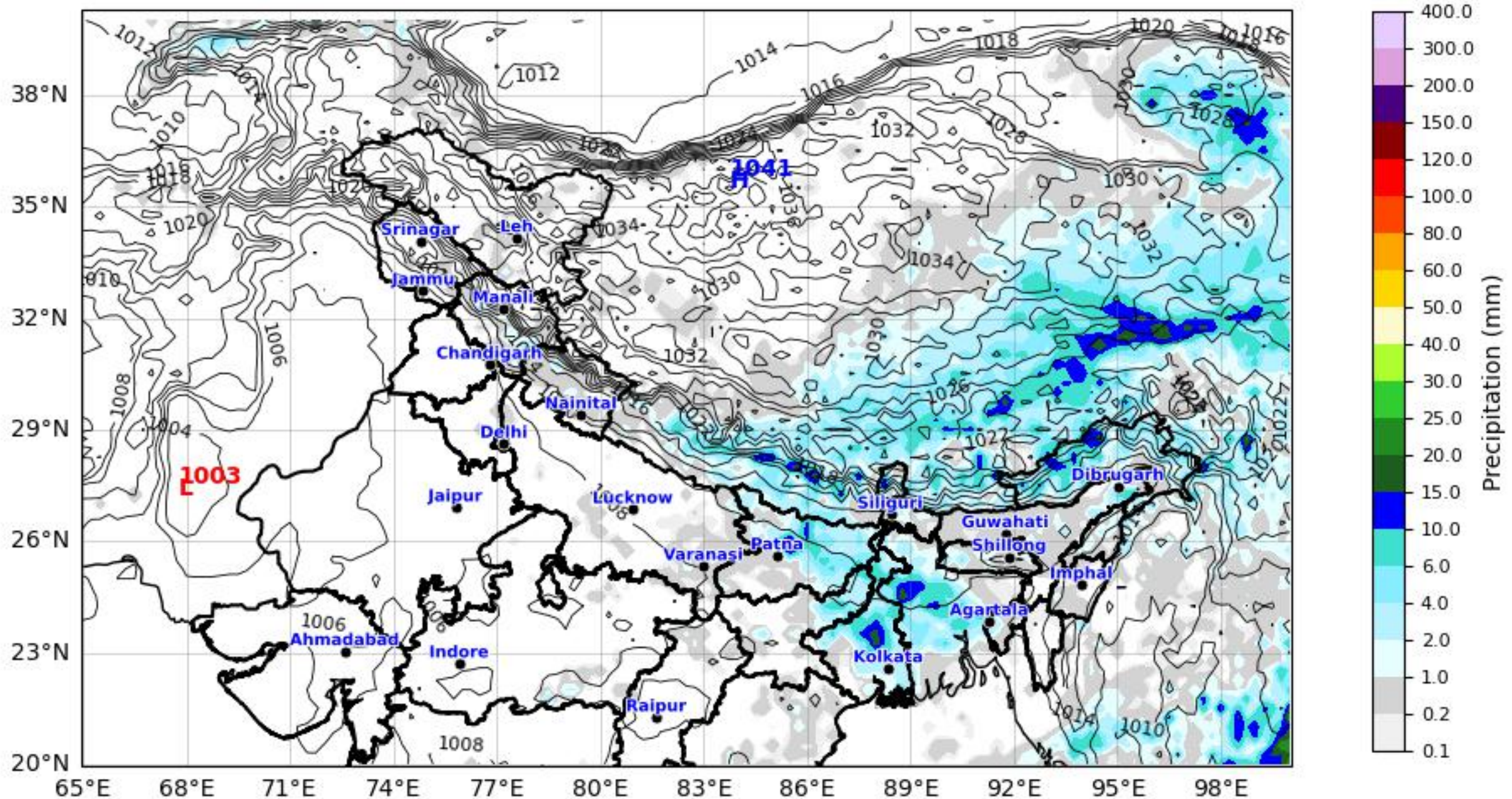
# Daily Precipitation Forecast (72 HR) North & Eastern Region



ECMWF Run 06 May 2026 00Z valid for 09 May 2026 00Z

KOLA - North & East by gujaratweather.com - Data: ECMWF

KOLA: Kathiawar Ocean & Land Atmosphere - Experimental Weather Mapping Platform



Disclaimer: The images provided by gujaratweather.com are experimental and for informational purposes only. They are not official forecasts. We do not guarantee the accuracy, timeliness, or completeness of these images, which may contain errors due to data download scripts or software limitations. For reliable weather forecasts, Please refer to official agencies such as Indian Meteorological Department or ECMWF. The base map shown does not represent political boundaries.



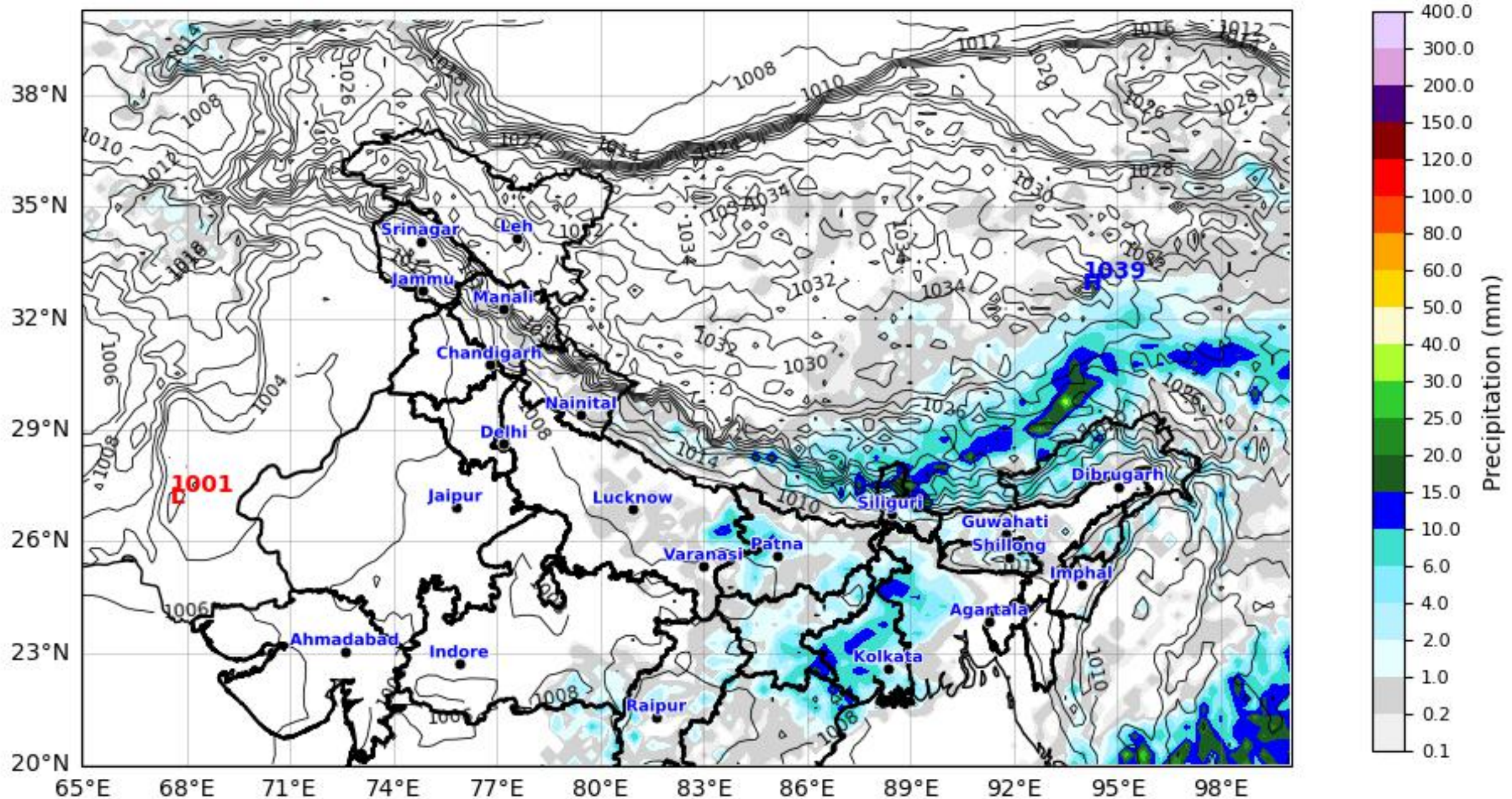
# Daily Precipitation Forecast (96 HR) North & Eastern Region



ECMWF Run 06 May 2026 00Z valid for 10 May 2026 00Z

KOLA - North & East by gujaratweather.com - Data: ECMWF

KOLA: Kathiawar Ocean & Land Atmosphere - Experimental Weather Mapping Platform



Disclaimer: The images provided by gujaratweather.com are experimental and for informational purposes only. They are not official forecasts. We do not guarantee the accuracy, timeliness, or completeness of these images, which may contain errors due to data download scripts or software limitations. For reliable weather forecasts, Please refer to official agencies such as Indian Meteorological Department or ECMWF. The base map shown does not represent political boundaries.



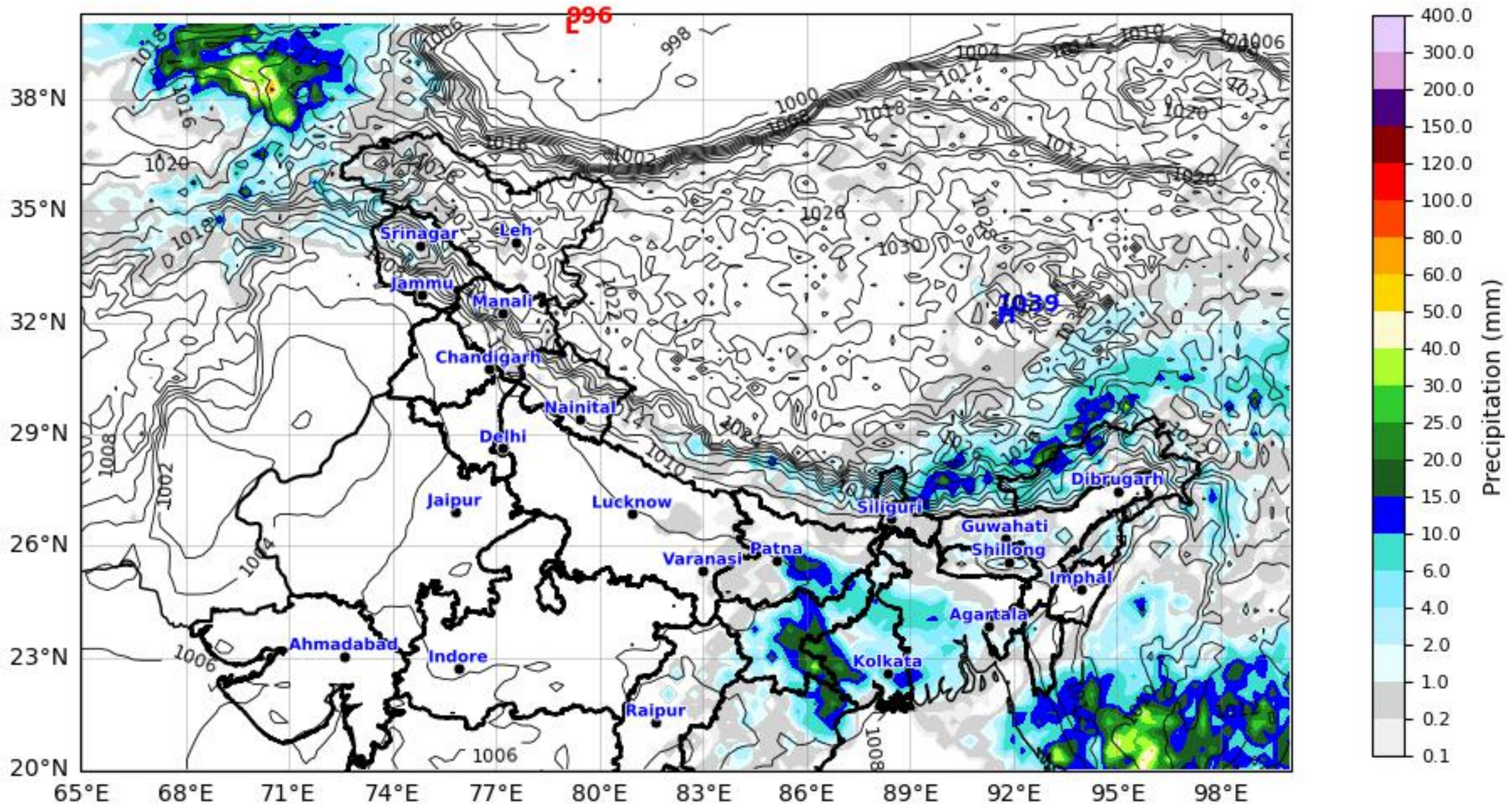
# Daily Precipitation Forecast (120 HR) North & Eastern Region



ECMWF Run 06 May 2026 00Z valid for 11 May 2026 00Z

KOLA - North & East by gujaratweather.com - Data: ECMWF

KOLA: Kathiawar Ocean & Land Atmosphere - Experimental Weather Mapping Platform



Disclaimer: The images provided by gujaratweather.com are experimental and for informational purposes only. They are not official forecasts. We do not guarantee the accuracy, timeliness, or completeness of these images, which may contain errors due to data download scripts or software limitations. For reliable weather forecasts, Please refer to official agencies such as Indian Meteorological Department or ECMWF. The base map shown does not represent political boundaries.



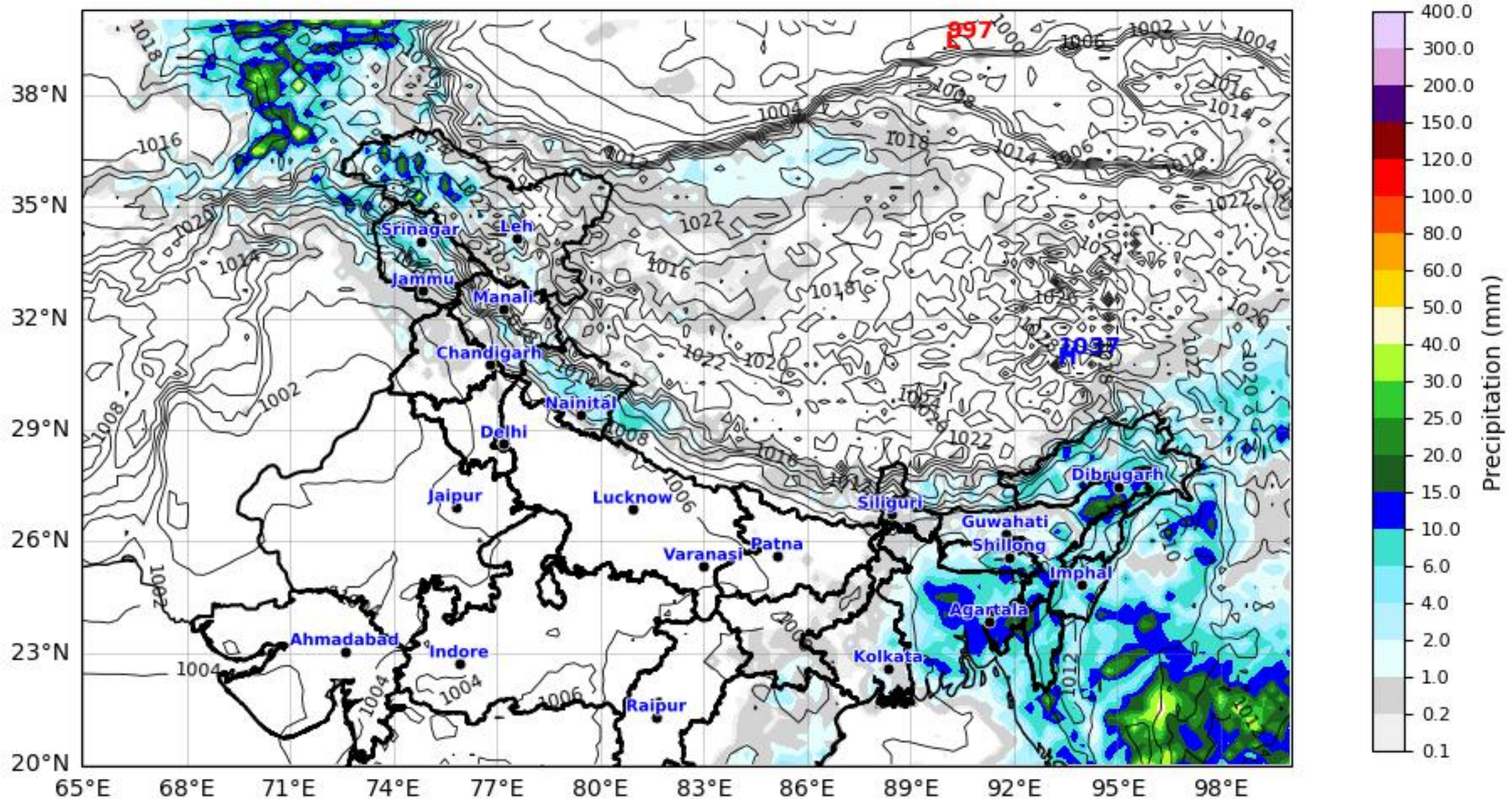
# Daily Precipitation Forecast (144 HR) North & Eastern Region



ECMWF Run 06 May 2026 00Z valid for 12 May 2026 00Z

KOLA - North & East by gujaratweather.com - Data: ECMWF

KOLA: Kathiawar Ocean & Land Atmosphere - Experimental Weather Mapping Platform



Disclaimer: The images provided by gujaratweather.com are experimental and for informational purposes only. They are not official forecasts. We do not guarantee the accuracy, timeliness, or completeness of these images, which may contain errors due to data download scripts or software limitations. For reliable weather forecasts, Please refer to official agencies such as Indian Meteorological Department or ECMWF. The base map shown does not represent political boundaries.



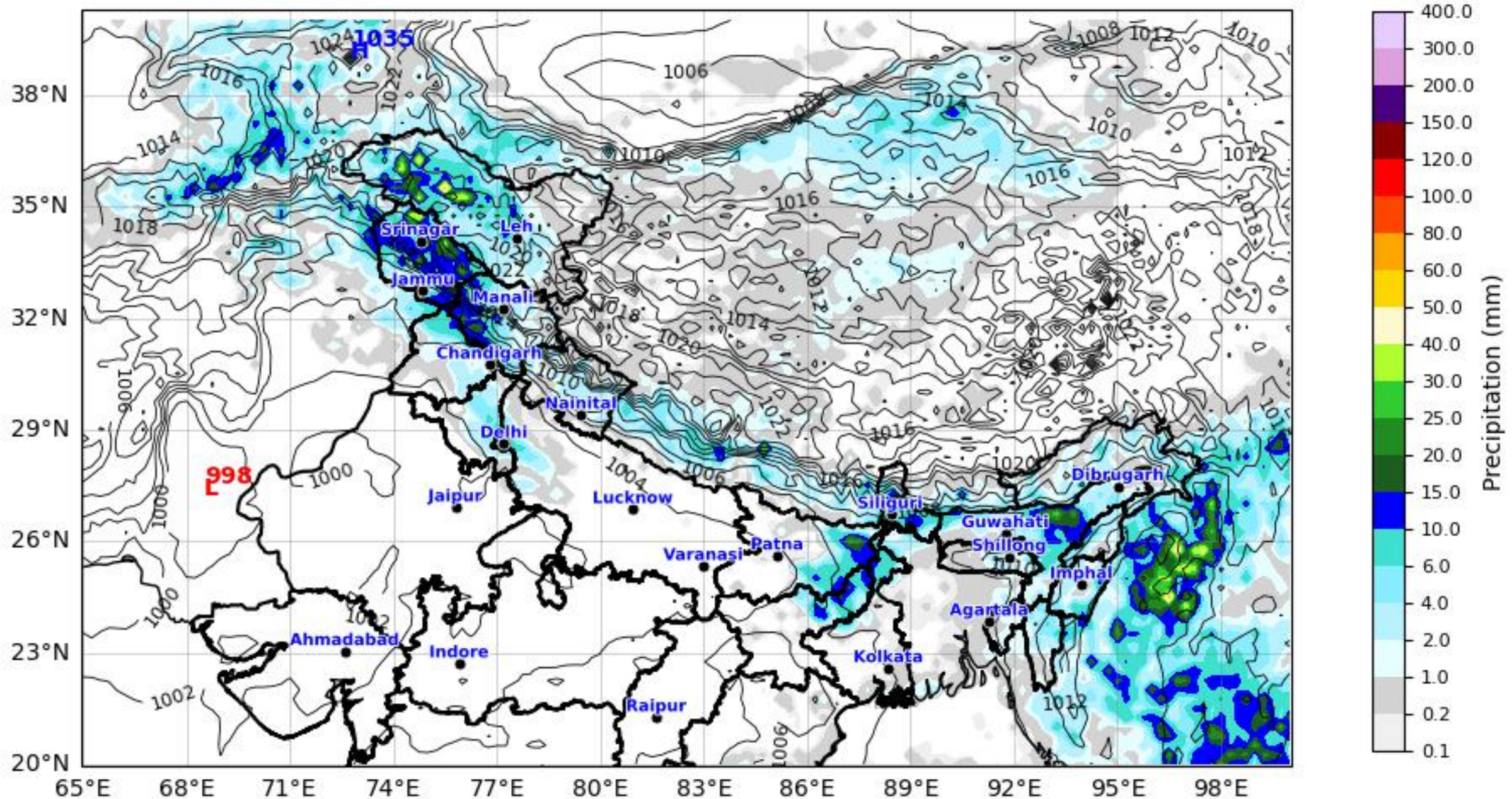
# Daily Precipitation Forecast (168 HR) North & Eastern Region



ECMWF Run 06 May 2026 00Z valid for 13 May 2026 00Z

KOLA - North & East by gujaratweather.com - Data: ECMWF

KOLA: Kathiawar Ocean & Land Atmosphere - Experimental Weather Mapping Platform



Disclaimer: The images provided by gujaratweather.com are experimental and for informational purposes only. They are not official forecasts. We do not guarantee the accuracy, timeliness, or completeness of these images, which may contain errors due to data download scripts or software limitations. For reliable weather forecasts, Please refer to official agencies such as Indian Meteorological Department or ECMWF. The base map shown does not represent political boundaries.



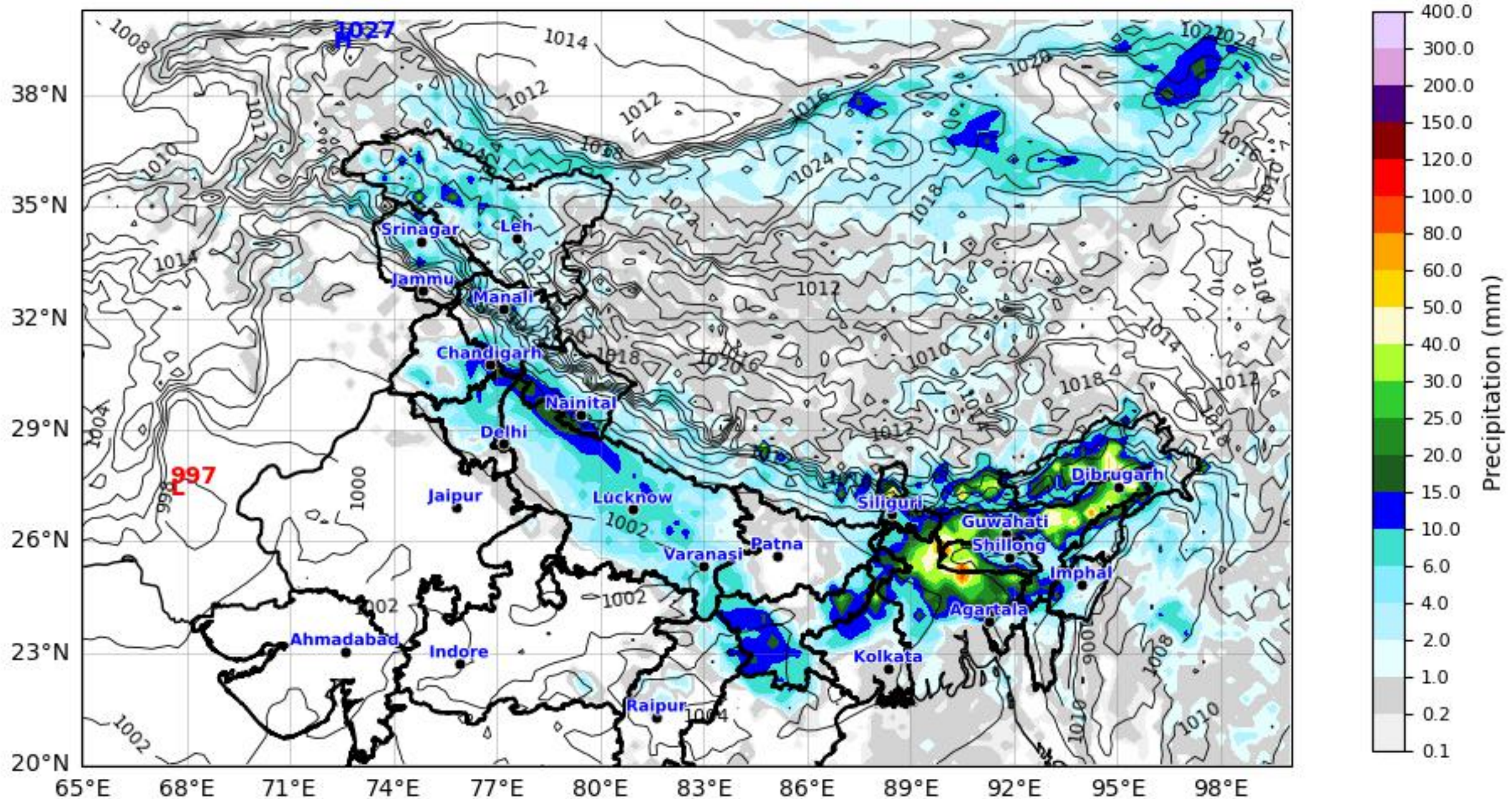
# Daily Precipitation Forecast (192 HR) North & Eastern Region



ECMWF Run 06 May 2026 00Z valid for 14 May 2026 00Z

KOLA - North & East by gujaratweather.com - Data: ECMWF

KOLA: Kathiawar Ocean & Land Atmosphere - Experimental Weather Mapping Platform



Disclaimer: The images provided by gujaratweather.com are experimental and for informational purposes only. They are not official forecasts. We do not guarantee the accuracy, timeliness, or completeness of these images, which may contain errors due to data download scripts or software limitations. For reliable weather forecasts, Please refer to official agencies such as Indian Meteorological Department or ECMWF. The base map shown does not represent political boundaries.



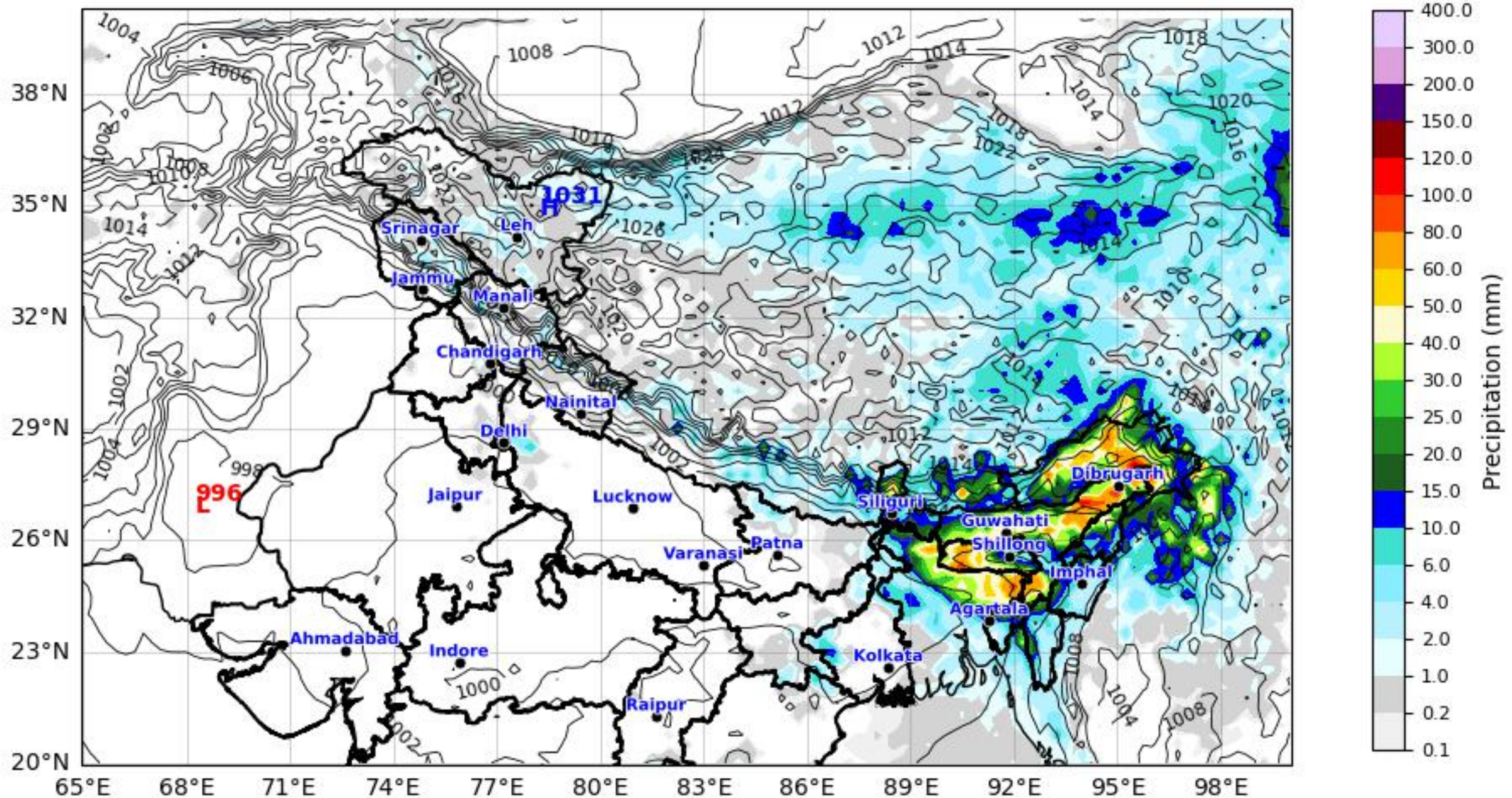
# Daily Precipitation Forecast (216 HR) North & Eastern Region



ECMWF Run 06 May 2026 00Z valid for 15 May 2026 00Z

KOLA - North & East by gujaratweather.com - Data: ECMWF

KOLA: Kathiawar Ocean & Land Atmosphere - Experimental Weather Mapping Platform



Disclaimer: The images provided by gujaratweather.com are experimental and for informational purposes only. They are not official forecasts. We do not guarantee the accuracy, timeliness, or completeness of these images, which may contain errors due to data download scripts or software limitations. For reliable weather forecasts, Please refer to official agencies such as Indian Meteorological Department or ECMWF. The base map shown does not represent political boundaries.



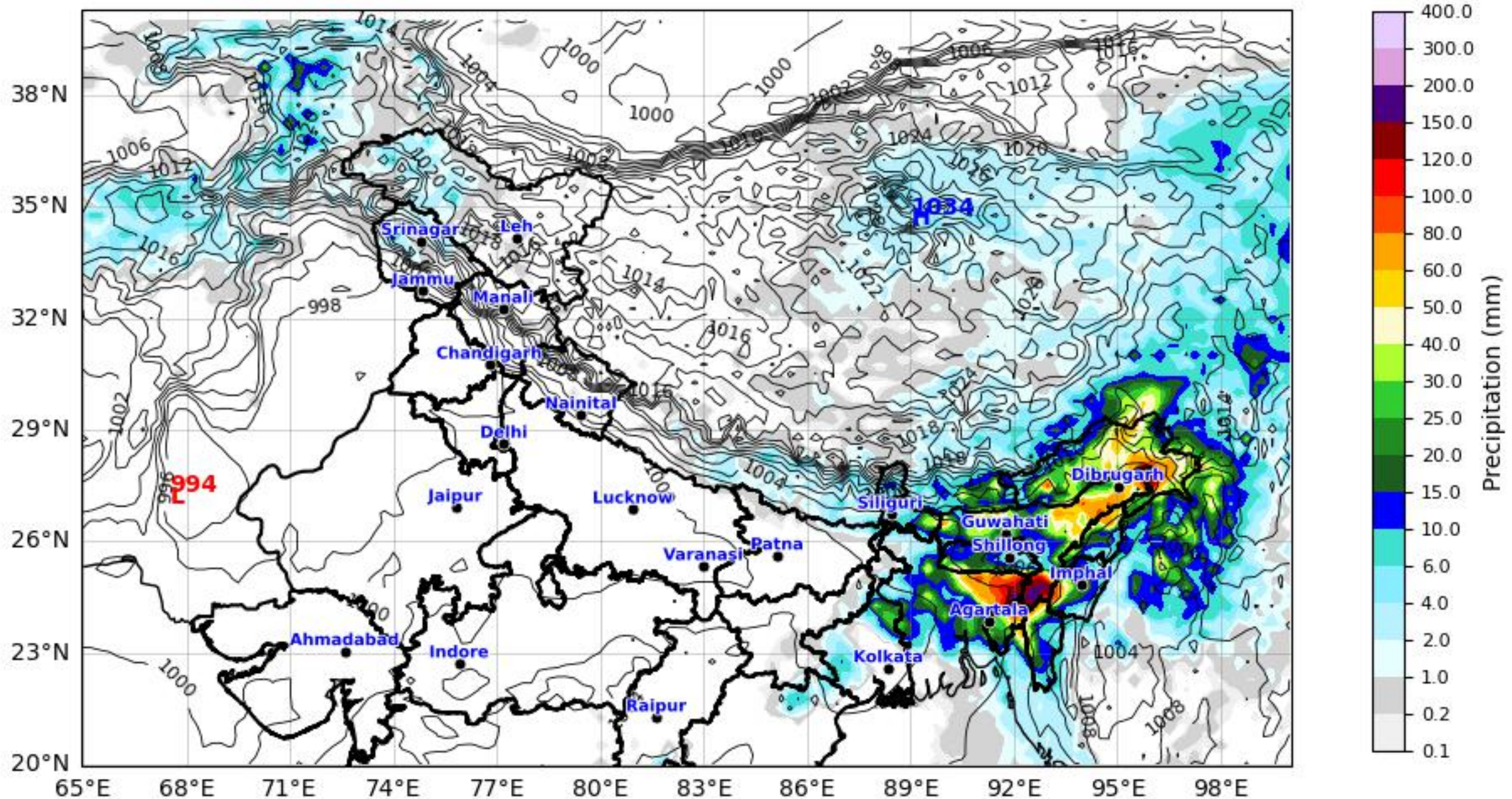
# Daily Precipitation Forecast (240 HR) North & Eastern Region



ECMWF Run 06 May 2026 00Z valid for 16 May 2026 00Z

KOLA - North & East by gujaratweather.com - Data: ECMWF

KOLA: Kathiawar Ocean & Land Atmosphere - Experimental Weather Mapping Platform



Disclaimer: The images provided by gujaratweather.com are experimental and for informational purposes only. They are not official forecasts. We do not guarantee the accuracy, timeliness, or completeness of these images, which may contain errors due to data download scripts or software limitations. For reliable weather forecasts, Please refer to official agencies such as Indian Meteorological Department or ECMWF. The base map shown does not represent political boundaries.



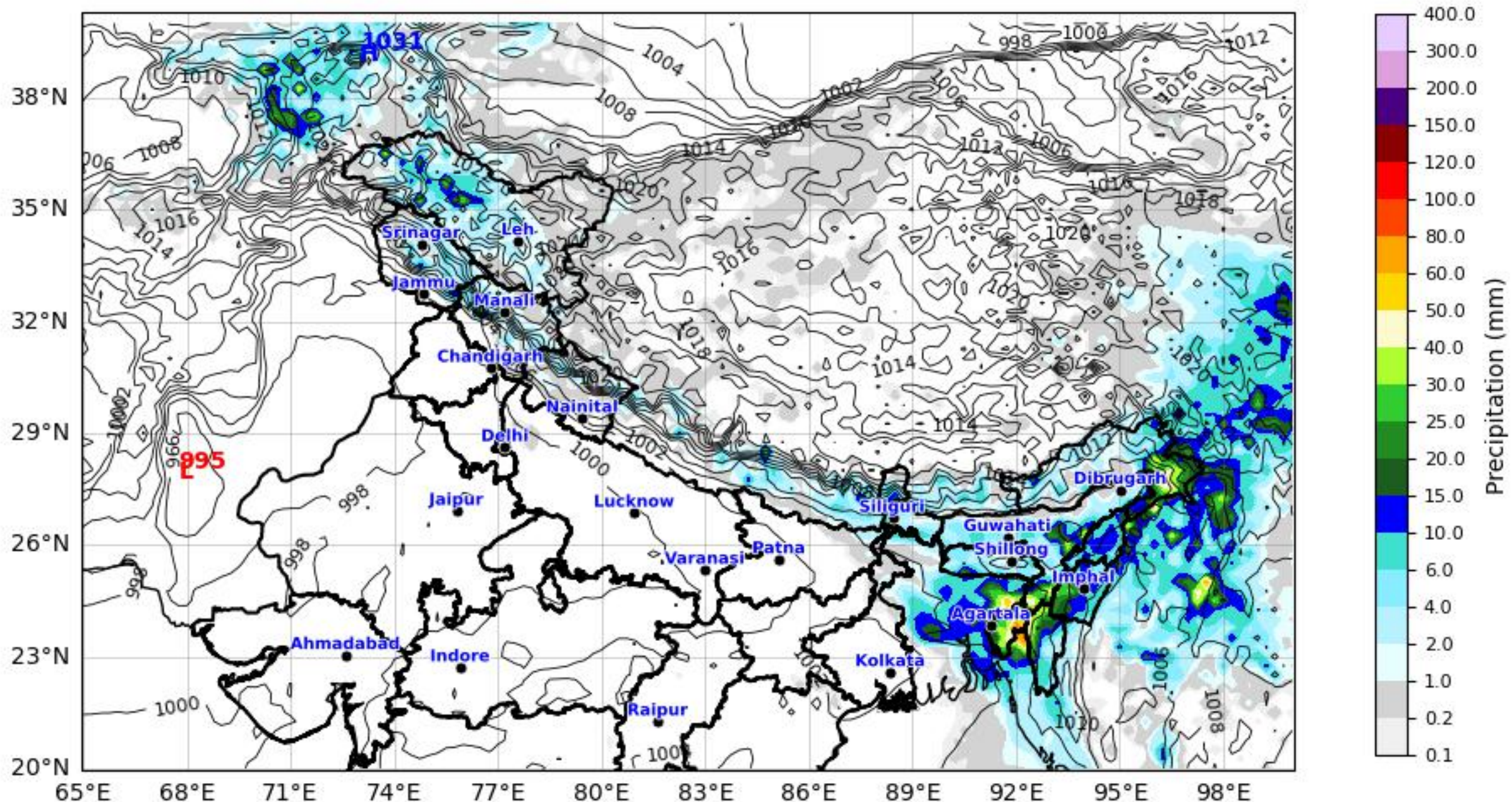
# Daily Precipitation Forecast (264 HR) North & Eastern Region



ECMWF Run 06 May 2026 00Z valid for 17 May 2026 00Z

KOLA - North & East by gujaratweather.com - Data: ECMWF

KOLA: Kathiawar Ocean & Land Atmosphere - Experimental Weather Mapping Platform



Disclaimer: The images provided by gujaratweather.com are experimental and for informational purposes only. They are not official forecasts. We do not guarantee the accuracy, timeliness, or completeness of these images, which may contain errors due to data download scripts or software limitations. For reliable weather forecasts, Please refer to official agencies such as Indian Meteorological Department or ECMWF. The base map shown does not represent political boundaries.



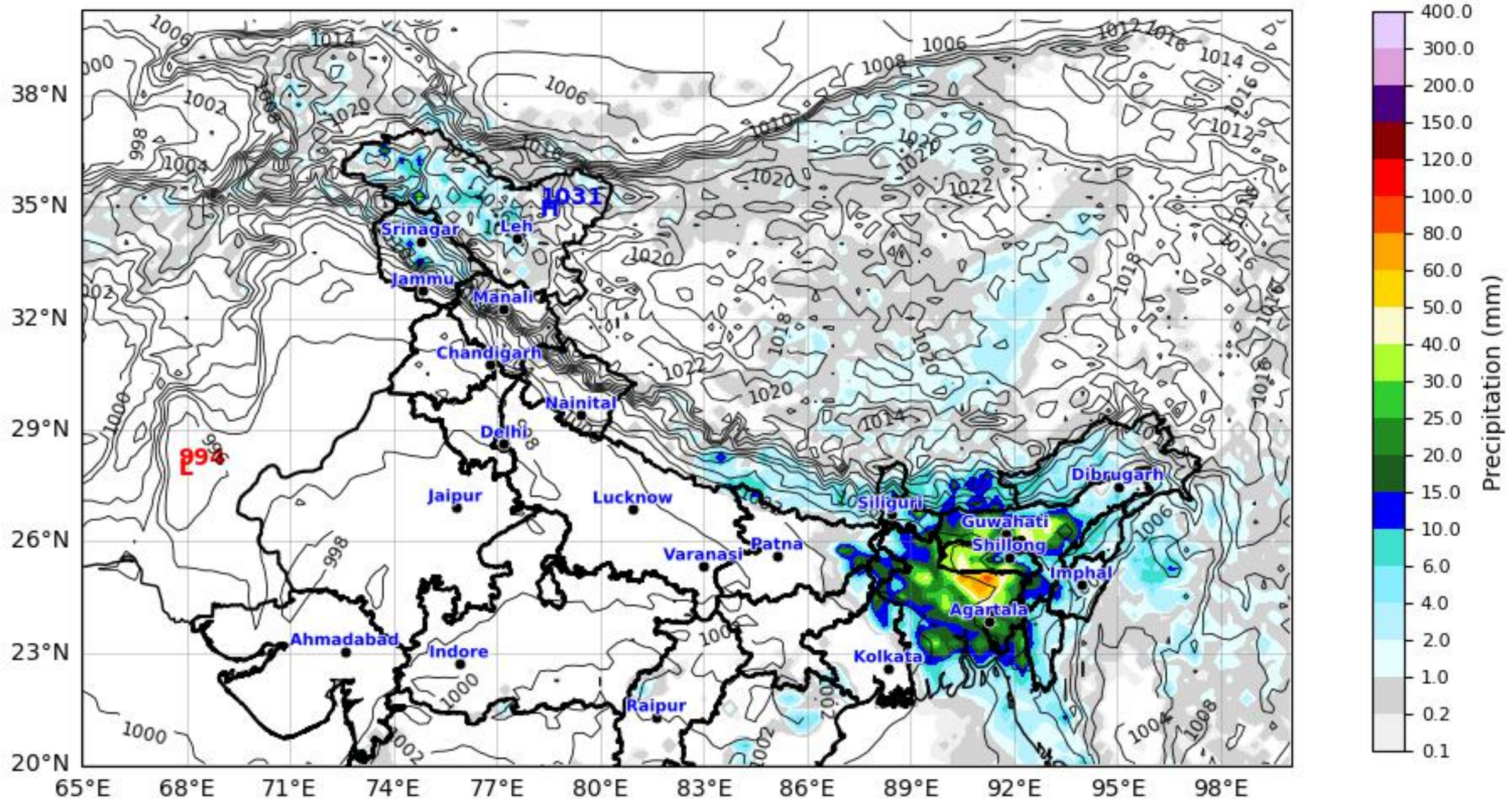
# Daily Precipitation Forecast (288 HR) North & Eastern Region



ECMWF Run 06 May 2026 00Z valid for 18 May 2026 00Z

KOLA - North & East by gujaratweather.com - Data: ECMWF

KOLA: Kathiawar Ocean & Land Atmosphere - Experimental Weather Mapping Platform



Disclaimer: The images provided by gujaratweather.com are experimental and for informational purposes only. They are not official forecasts. We do not guarantee the accuracy, timeliness, or completeness of these images, which may contain errors due to data download scripts or software limitations. For reliable weather forecasts, Please refer to official agencies such as Indian Meteorological Department or ECMWF. The base map shown does not represent political boundaries.



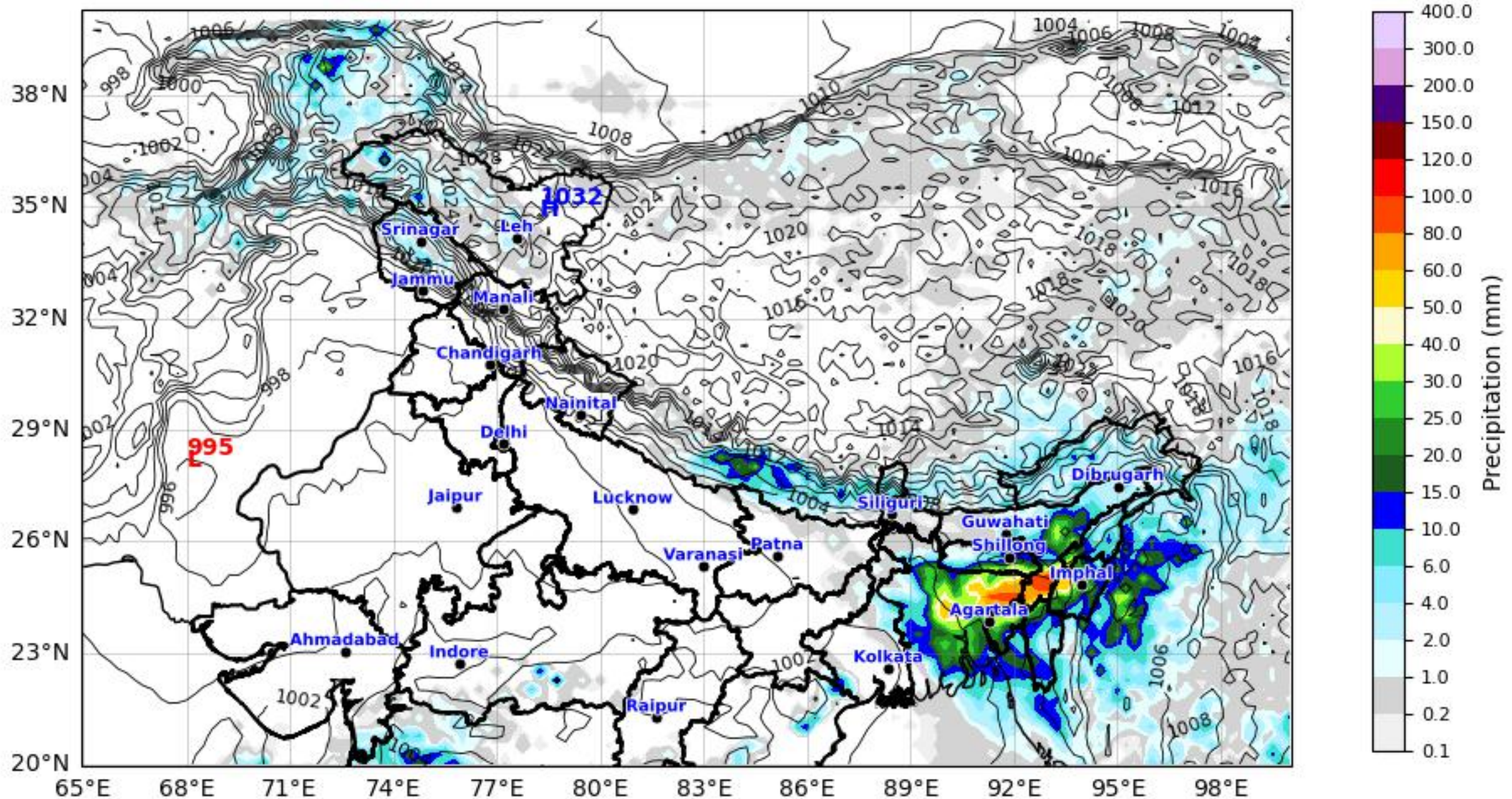
# Daily Precipitation Forecast (312 HR) North & Eastern Region



ECMWF Run 06 May 2026 00Z valid for 19 May 2026 00Z

KOLA - North & East by gujaratweather.com - Data: ECMWF

KOLA: Kathiawar Ocean & Land Atmosphere - Experimental Weather Mapping Platform



Disclaimer: The images provided by gujaratweather.com are experimental and for informational purposes only. They are not official forecasts. We do not guarantee the accuracy, timeliness, or completeness of these images, which may contain errors due to data download scripts or software limitations. For reliable weather forecasts, Please refer to official agencies such as Indian Meteorological Department or ECMWF. The base map shown does not represent political boundaries.



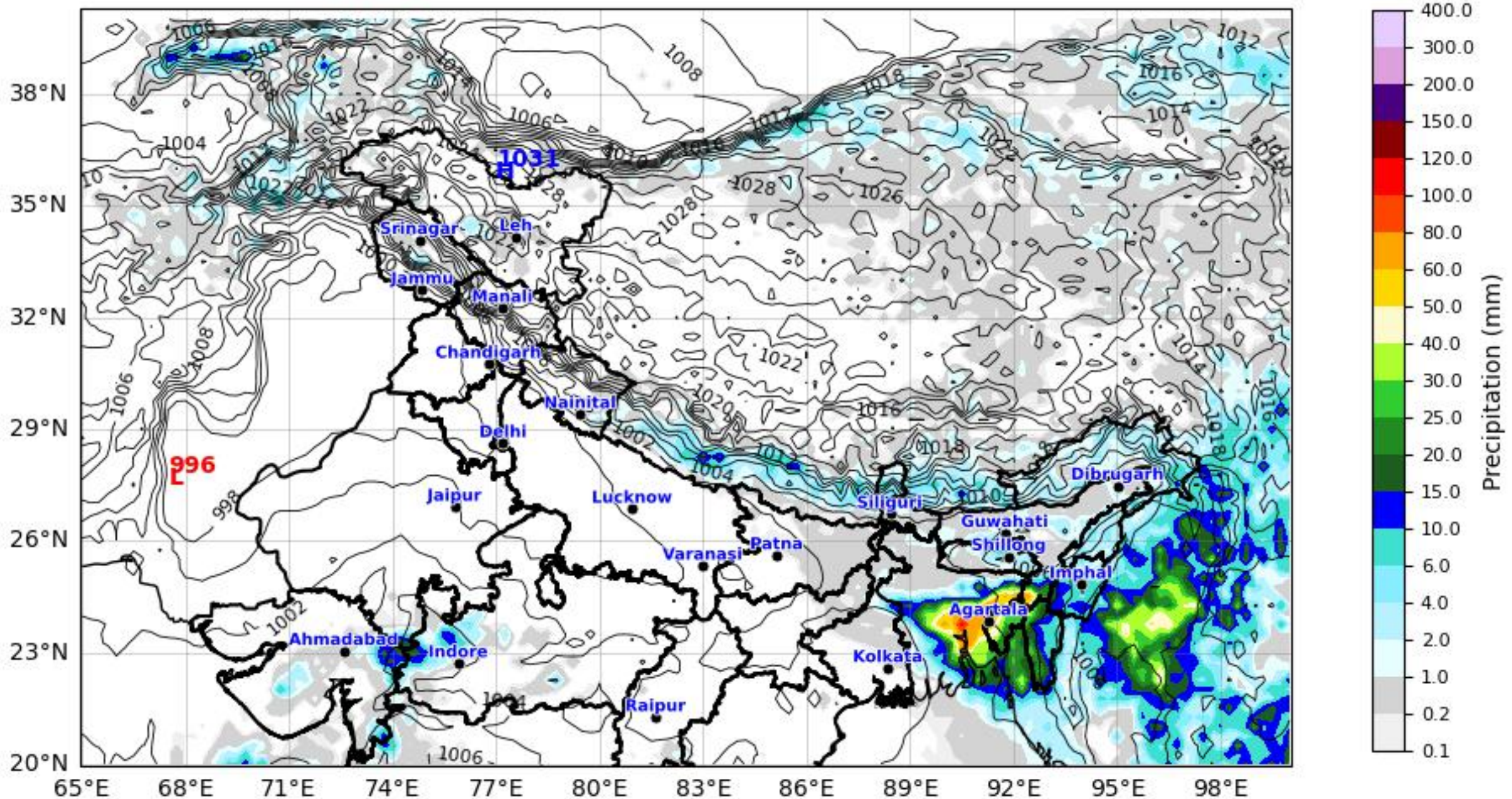
# Daily Precipitation Forecast (336 HR) North & Eastern Region



ECMWF Run 06 May 2026 00Z valid for 20 May 2026 00Z

KOLA - North & East by gujaratweather.com - Data: ECMWF

KOLA: Kathiawar Ocean & Land Atmosphere - Experimental Weather Mapping Platform



Disclaimer: The images provided by gujaratweather.com are experimental and for informational purposes only. They are not official forecasts. We do not guarantee the accuracy, timeliness, or completeness of these images, which may contain errors due to data download scripts or software limitations. For reliable weather forecasts, Please refer to official agencies such as Indian Meteorological Department or ECMWF. The base map shown does not represent political boundaries.



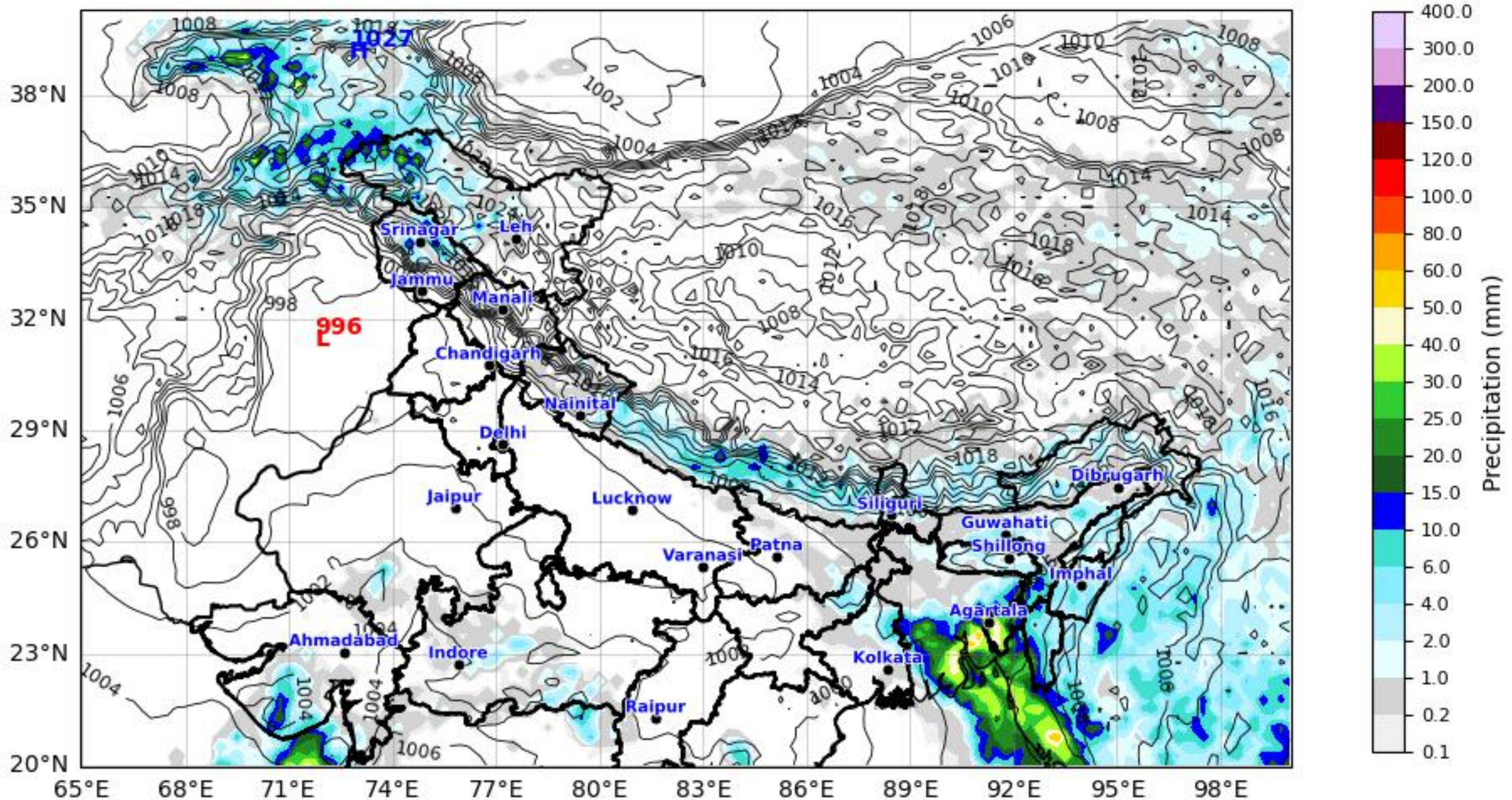
# Daily Precipitation Forecast (360 HR) North & Eastern Region



ECMWF Run 06 May 2026 00Z valid for 21 May 2026 00Z

KOLA - North & East by gujaratweather.com - Data: ECMWF

KOLA: Kathiawar Ocean & Land Atmosphere - Experimental Weather Mapping Platform



Disclaimer: The images provided by gujaratweather.com are experimental and for informational purposes only. They are not official forecasts. We do not guarantee the accuracy, timeliness, or completeness of these images, which may contain errors due to data download scripts or software limitations. For reliable weather forecasts, Please refer to official agencies such as Indian Meteorological Department or ECMWF. The base map shown does not represent political boundaries.