



MSLP Analysis Map

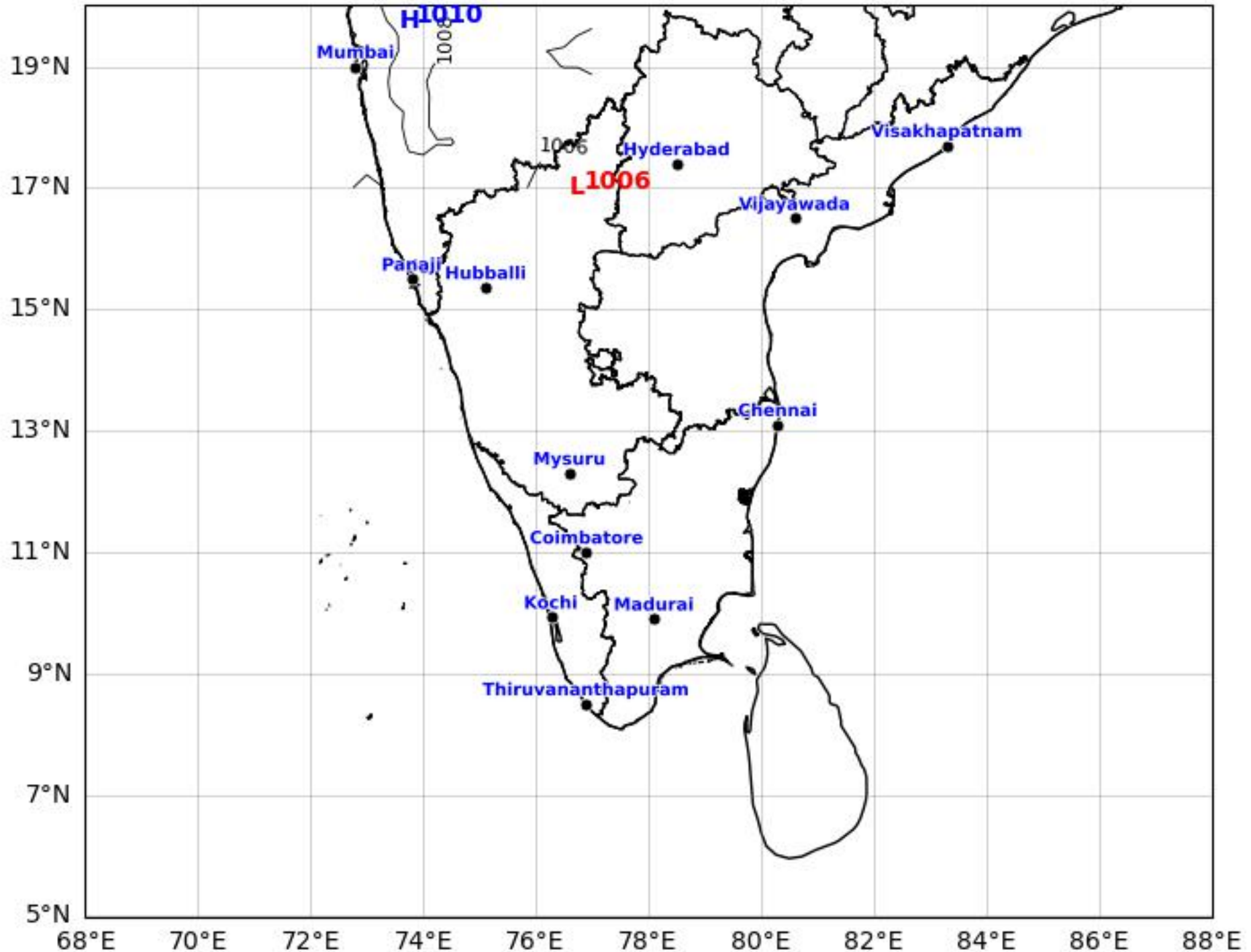
South India Region

GFS run 23 Apr 2026 00Z



KOLA - South by gujaratweather.com - Data: NOMADS

KOLA: Kathiawar Ocean & Land Atmosphere - Experimental Weather Mapping Platform



Disclaimer: The images provided by gujaratweather.com are experimental and for informational purposes only. They are not official forecasts. We do not guarantee the accuracy, timeliness, or completeness of these images, which may contain errors due to data download scripts or software limitations. For reliable weather forecasts, Please refer to official agencies such as Indian Meteorological Department or NOMADS. The base map shown does not represent political boundaries.



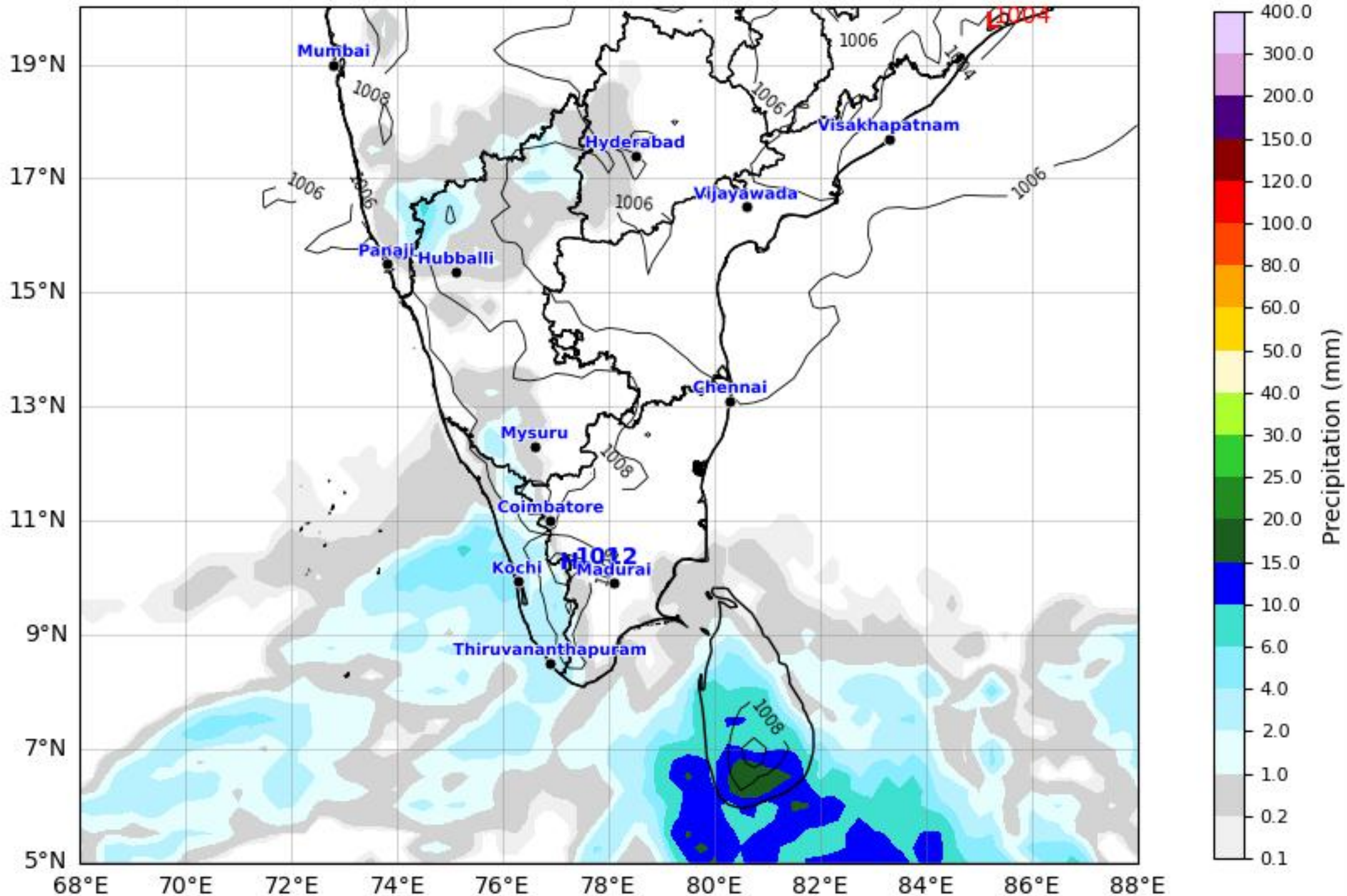
Daily Precipitation Forecast 24 Hours South India Region



GFS run 23 Apr 2026 00Z valid for 24 Apr 2026 00Z

KOLA - South by gujaratweather.com - Data: NOMADS

KOLA: Kathiawar Ocean & Land Atmosphere - Experimental Mapping Platform



Disclaimer: The images provided by gujaratweather.com are experimental and for informational purposes only. They are not official forecasts. We do not guarantee the accuracy, timeliness, or completeness of these images, which may contain errors due to data download scripts or software limitations. For reliable weather forecasts, Please refer to official agencies such as Indian Meteorological Department or NOMADS. The base map shown does not represent political boundaries.



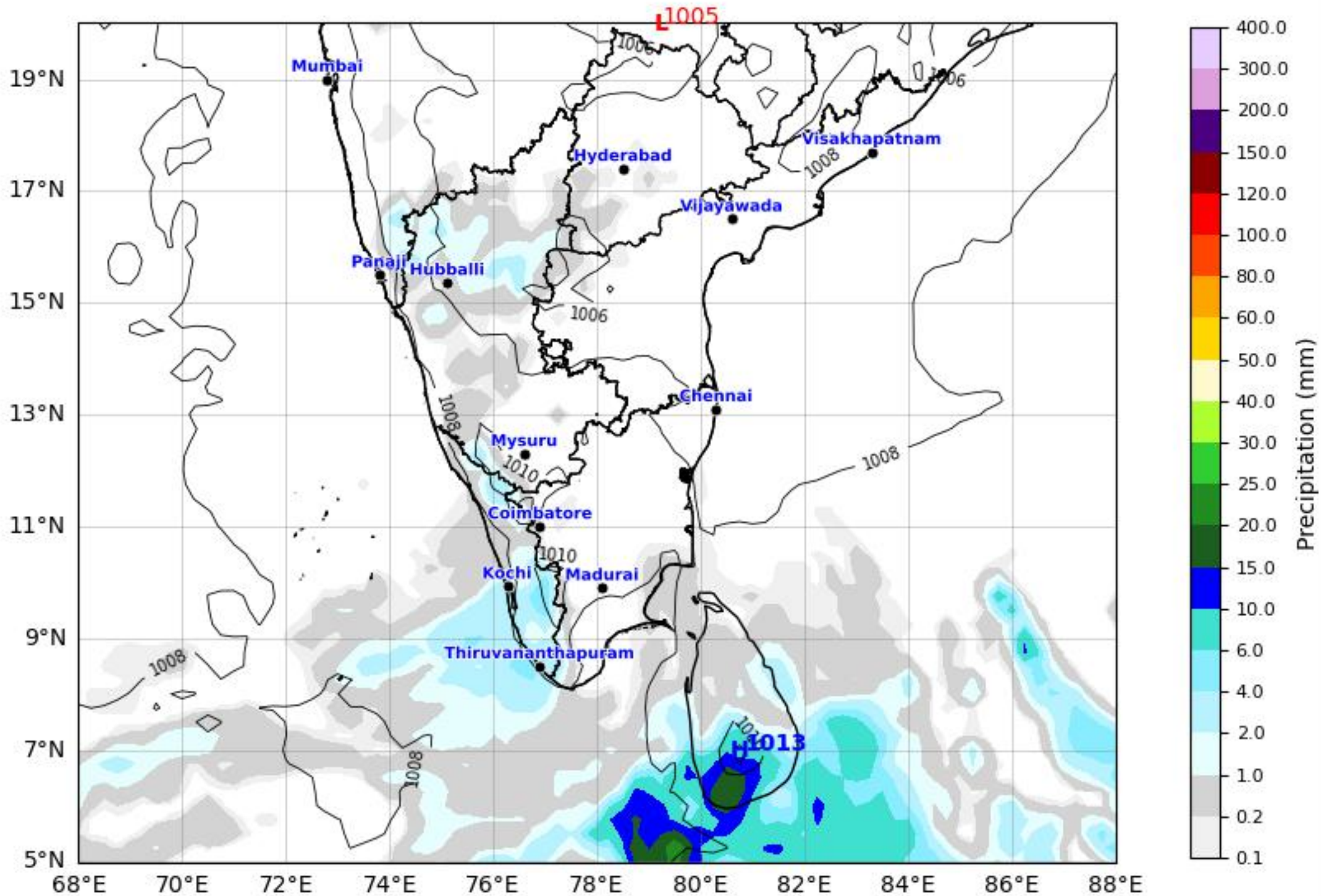
Daily Precipitation Forecast 48 Hours South India Region



GFS run 23 Apr 2026 00Z valid for 25 Apr 2026 00Z

KOLA - South by gujaratweather.com - Data: NOMADS

KOLA: Kathiawar Ocean & Land Atmosphere - Experimental Mapping Mapping Platform



Disclaimer: The images provided by gujaratweather.com are experimental and for informational purposes only. They are not official forecasts. We do not guarantee the accuracy, timeliness, or completeness of these images, which may contain errors due to data download scripts or software limitations. For reliable weather forecasts, Please refer to official agencies such as Indian Meteorological Department or NOMADS. The base map shown does not represent political boundaries.



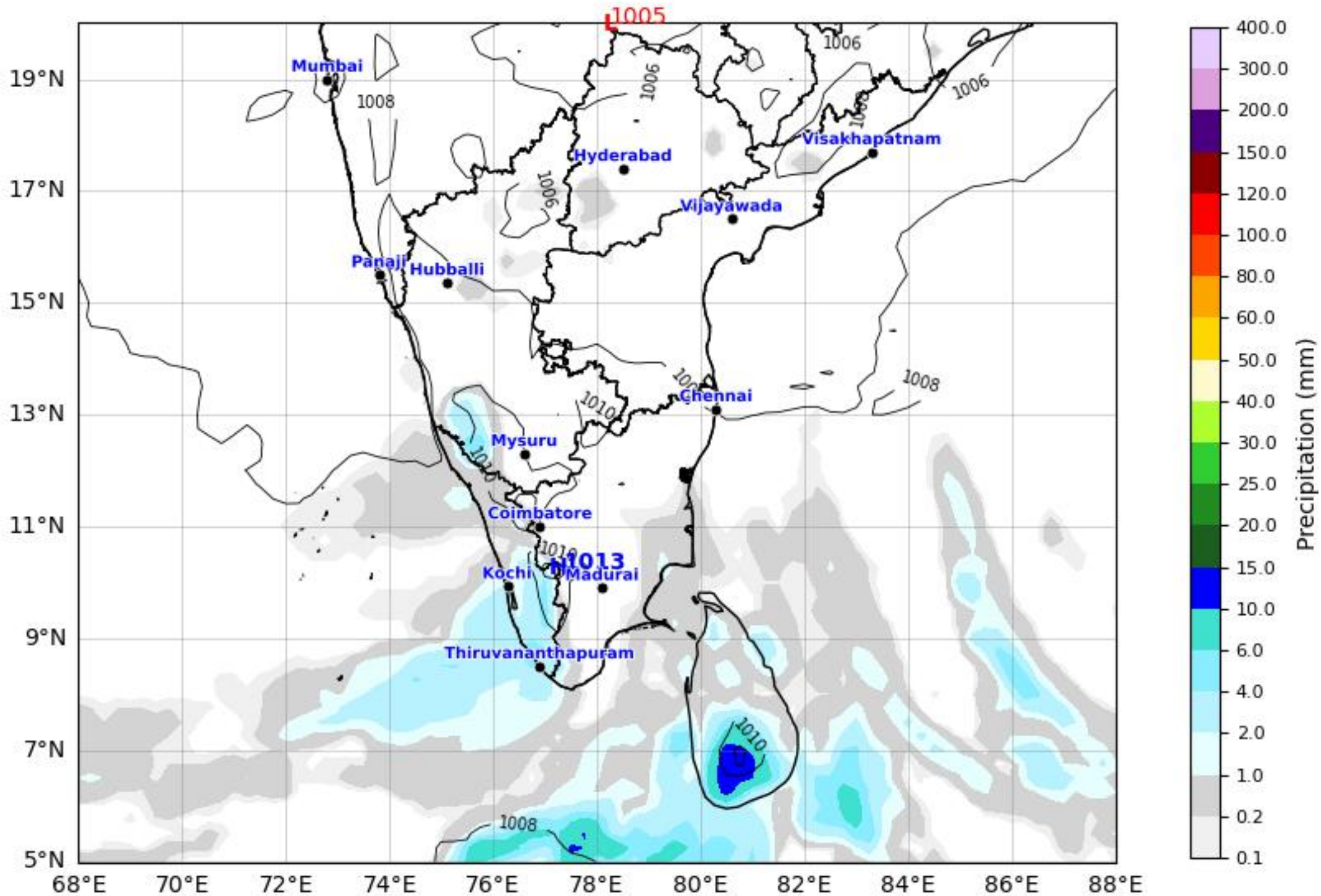
Daily Precipitation Forecast 72 Hours South India Region



GFS run 23 Apr 2026 00Z valid for 26 Apr 2026 00Z

KOLA - South by gujaratweather.com - Data: NOMADS

KOLA: Kathiawar Ocean & Land Atmosphere - Experimental Mapping Mapping Platform



Disclaimer: The images provided by gujaratweather.com are experimental and for informational purposes only. They are not official forecasts. We do not guarantee the accuracy, timeliness, or completeness of these images, which may contain errors due to data download scripts or software limitations. For reliable weather forecasts, Please refer to official agencies such as Indian Meteorological Department or NOMADS. The base map shown does not represent political boundaries.



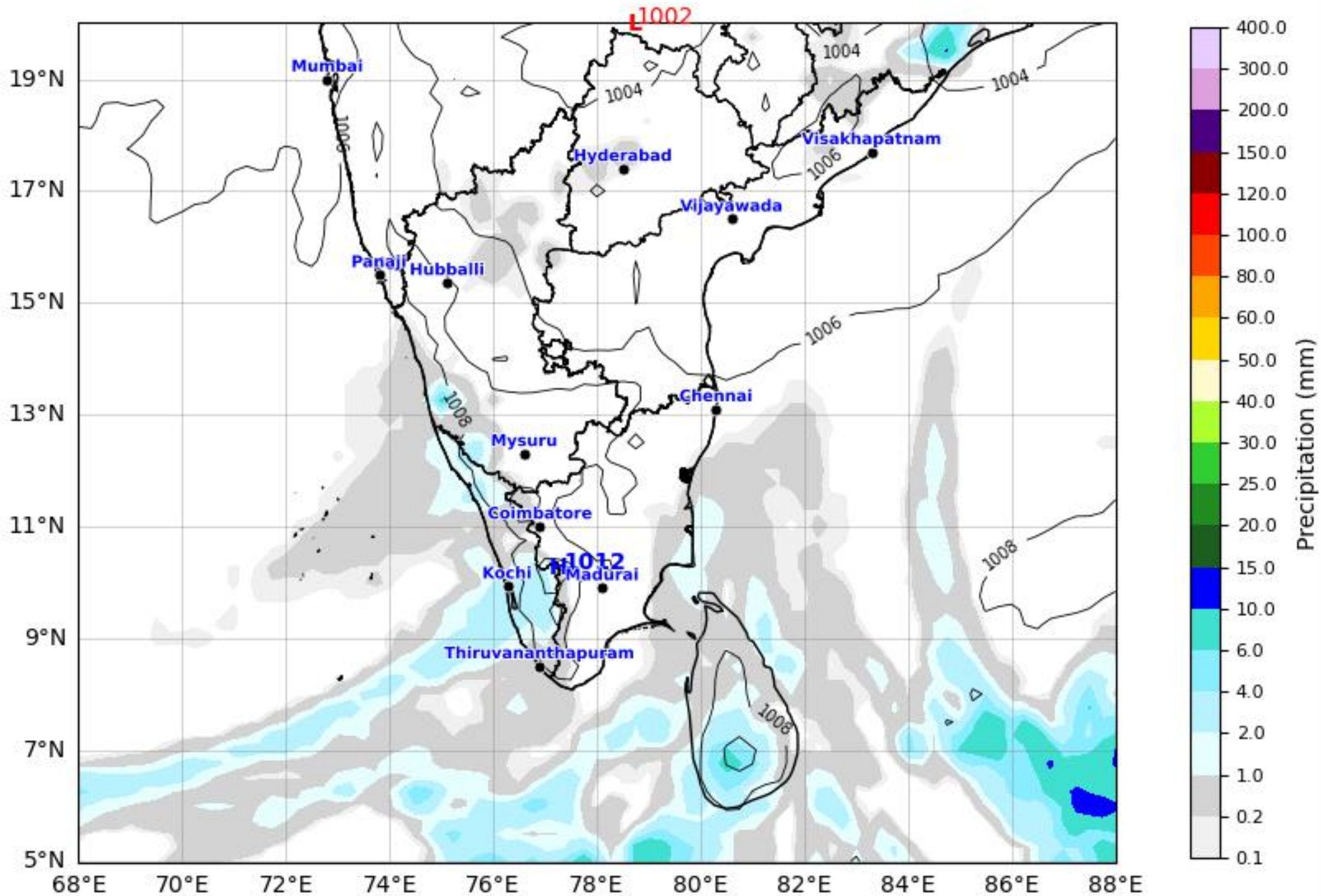
Daily Precipitation Forecast 96 Hours South India Region



GFS run 23 Apr 2026 00Z valid for 27 Apr 2026 00Z

KOLA - South by gujaratweather.com - Data: NOMADS

KOLA: Kathiawar Ocean & Land Atmosphere - Experimental Mapping Mapping Platform



Disclaimer: The images provided by gujaratweather.com are experimental and for informational purposes only. They are not official forecasts. We do not guarantee the accuracy, timeliness, or completeness of these images, which may contain errors due to data download scripts or software limitations. For reliable weather forecasts, Please refer to official agencies such as Indian Meteorological Department or NOMADS.
The base map shown does not represent political boundaries.



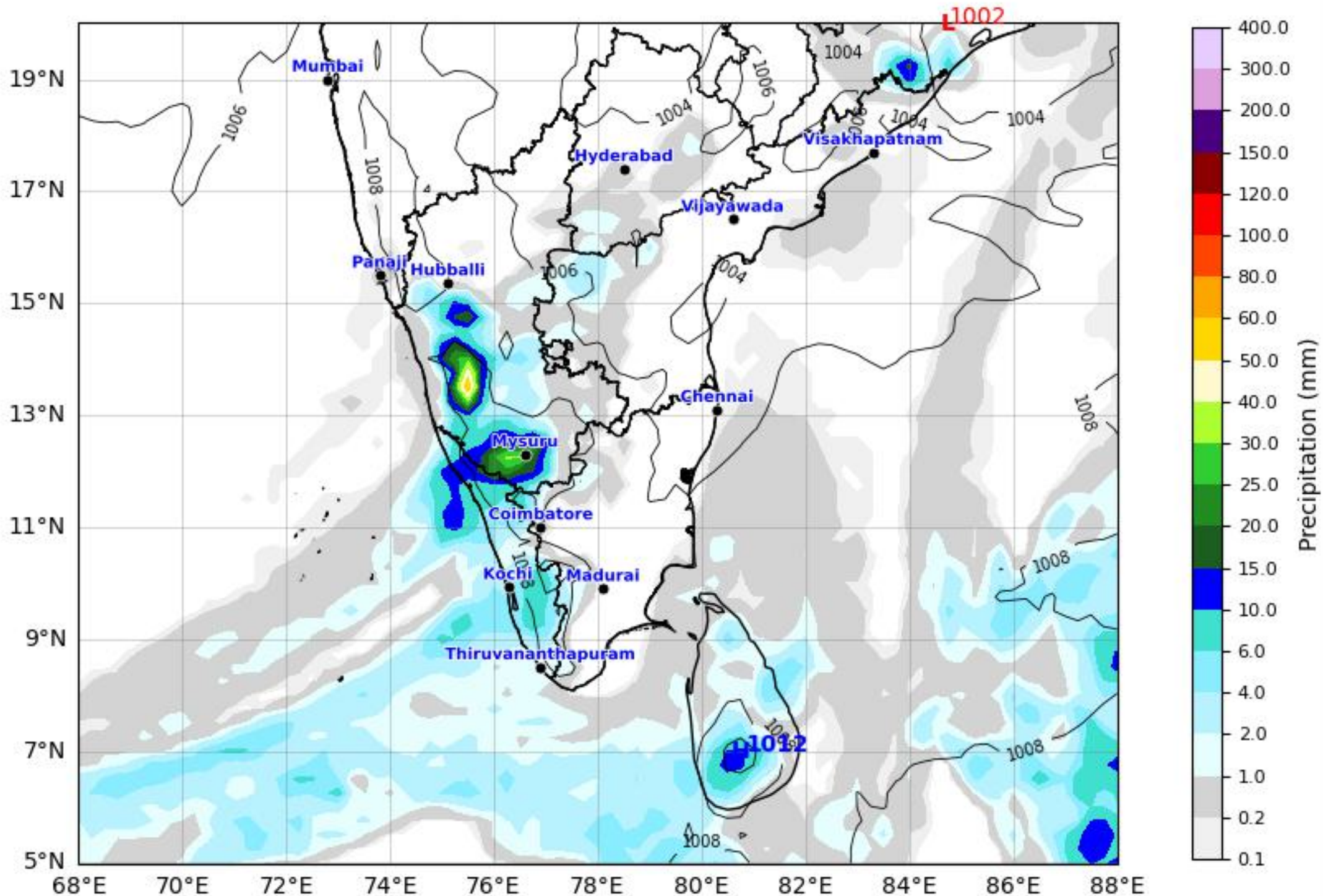
Daily Precipitation Forecast 120 Hours South India Region



GFS run 23 Apr 2026 00Z valid for 28 Apr 2026 00Z

KOLA - South by gujaratweather.com - Data: NOMADS

KOLA: Kathiawar Ocean & Land Atmosphere - Experimental Mapping Mapping Platform



Disclaimer: The images provided by gujaratweather.com are experimental and for informational purposes only. They are not official forecasts. We do not guarantee the accuracy, timeliness, or completeness of these images, which may contain errors due to data download scripts or software limitations. For reliable weather forecasts, Please refer to official agencies such as Indian Meteorological Department or NOMADS. The base map shown does not represent political boundaries.



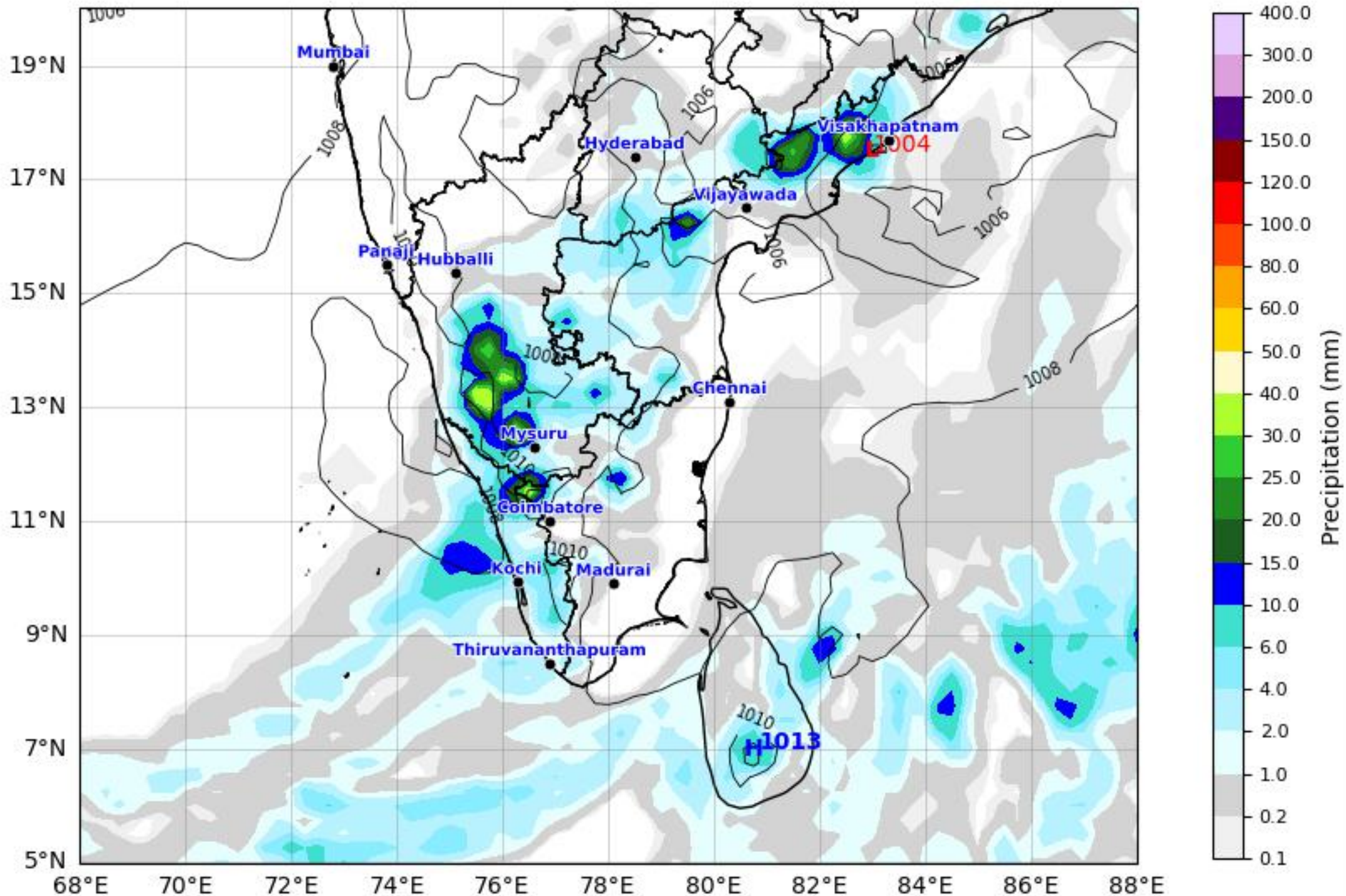
Daily Precipitation Forecast 144 Hours South India Region



GFS run 23 Apr 2026 00Z valid for 29 Apr 2026 00Z

KOLA - South by gujaratweather.com - Data: NOMADS

KOLA: Kathiawar Ocean & Land Atmosphere - Experimental Mapping Platform



Disclaimer: The images provided by gujaratweather.com are experimental and for informational purposes only. They are not official forecasts. We do not guarantee the accuracy, timeliness, or completeness of these images, which may contain errors due to data download scripts or software limitations. For reliable weather forecasts, Please refer to official agencies such as Indian Meteorological Department or NOMADS. The base map shown does not represent political boundaries.



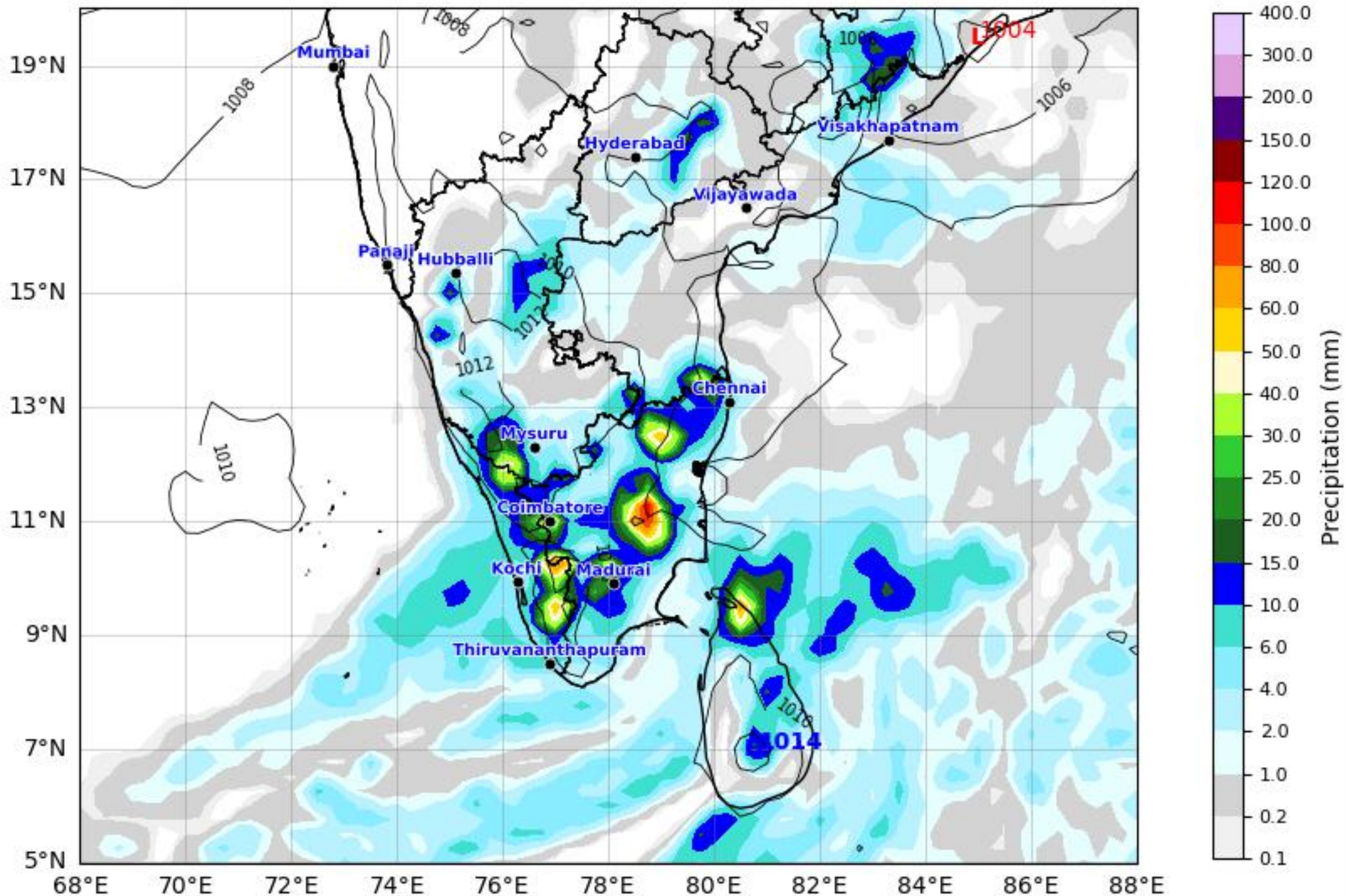
Daily Precipitation Forecast 168 Hours South India Region



GFS run 23 Apr 2026 00Z valid for 30 Apr 2026 00Z

KOLA - South by gujaratweather.com - Data: NOMADS

KOLA: Kathiawar Ocean & Land Atmosphere - Experimental Mapping Platform



Disclaimer: The images provided by gujaratweather.com are experimental and for informational purposes only. They are not official forecasts. We do not guarantee the accuracy, timeliness, or completeness of these images, which may contain errors due to data download scripts or software limitations. For reliable weather forecasts, Please refer to official agencies such as Indian Meteorological Department or NOMADS.
The base map shown does not represent political boundaries.

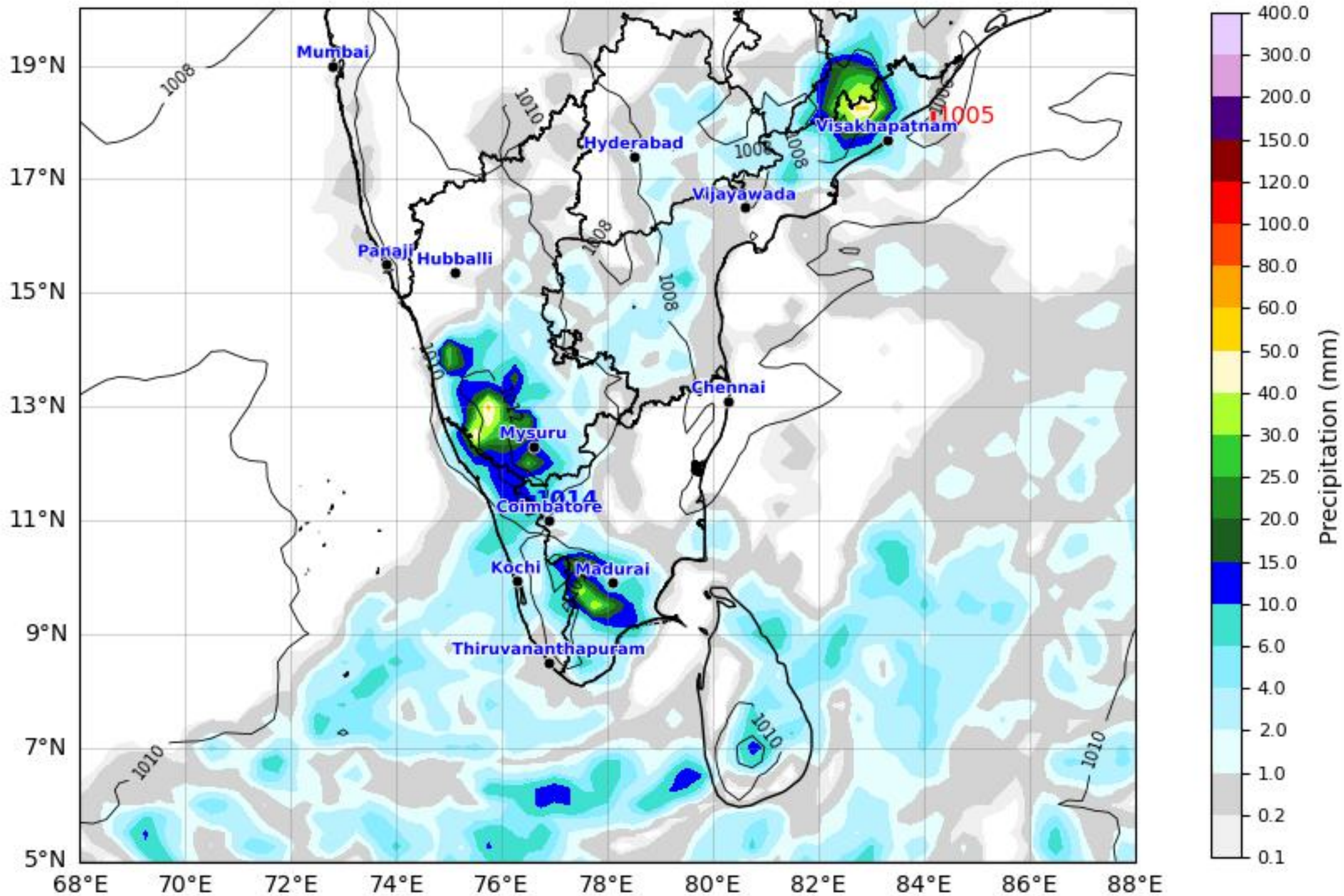


Daily Precipitation Forecast 192 Hours South India Region



GFS run 23 Apr 2026 00Z valid for 01 May 2026 00Z
KOLA - South by gujaratweather.com - Data: NOMADS

KOLA: Kathiawar Ocean & Land Atmosphere - Experimental Mapping Platform



Disclaimer: The images provided by gujaratweather.com are experimental and for informational purposes only. They are not official forecasts. We do not guarantee the accuracy, timeliness, or completeness of these images, which may contain errors due to data download scripts or software limitations. For reliable weather forecasts, Please refer to official agencies such as Indian Meteorological Department or NOMADS. The base map shown does not represent political boundaries.

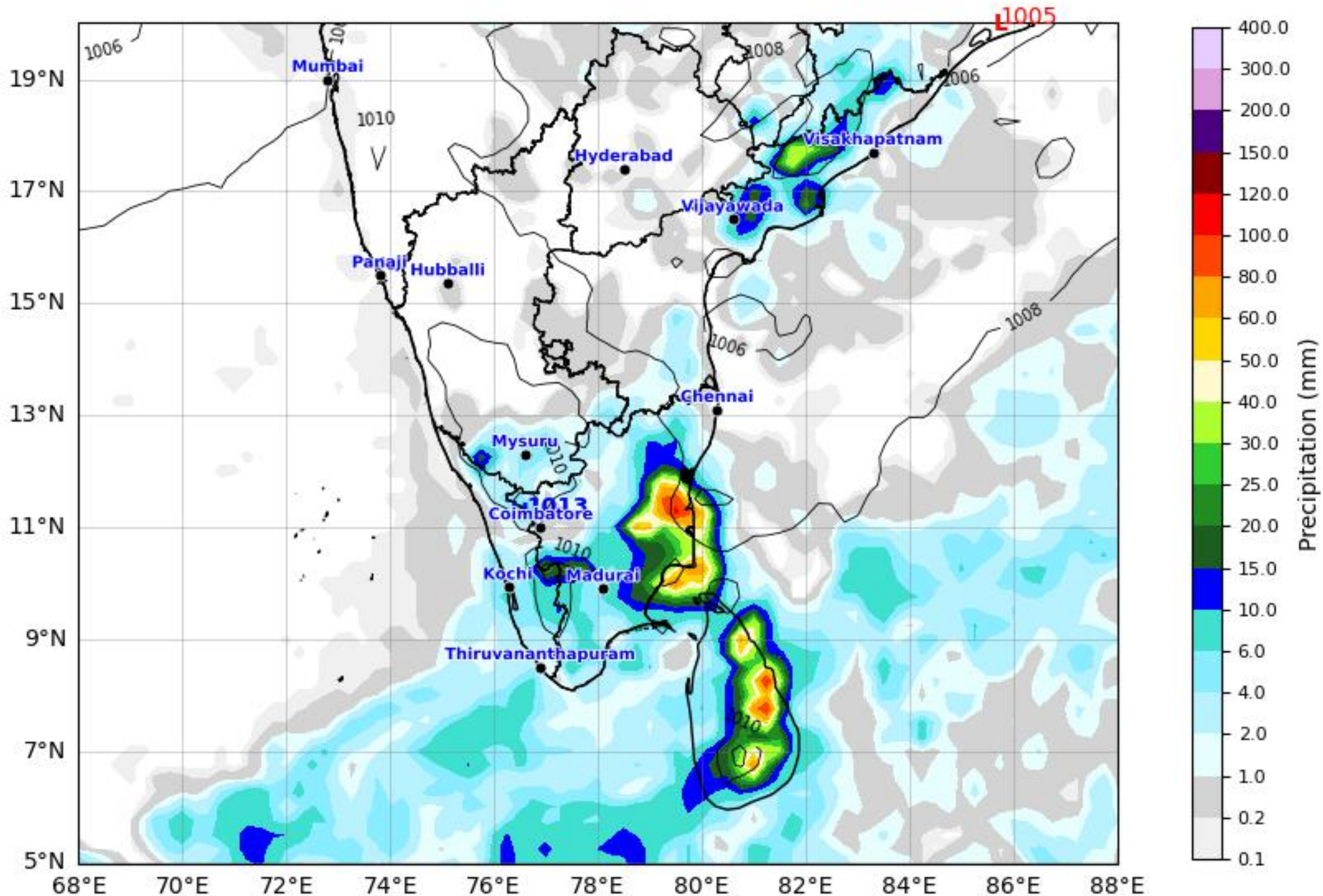


Daily Precipitation Forecast 216 Hours South India Region



GFS run 23 Apr 2026 00Z valid for 02 May 2026 00Z
KOLA - South by gujaratweather.com - Data: NOMADS

KOLA: Kathiawar Ocean & Land Atmosphere - Experimental Mapping Platform



Disclaimer: The images provided by gujaratweather.com are experimental and for informational purposes only. They are not official forecasts. We do not guarantee the accuracy, timeliness, or completeness of these images, which may contain errors due to data download scripts or software limitations. For reliable weather forecasts, Please refer to official agencies such as Indian Meteorological Department or NOMADS.
The base map shown does not represent political boundaries.

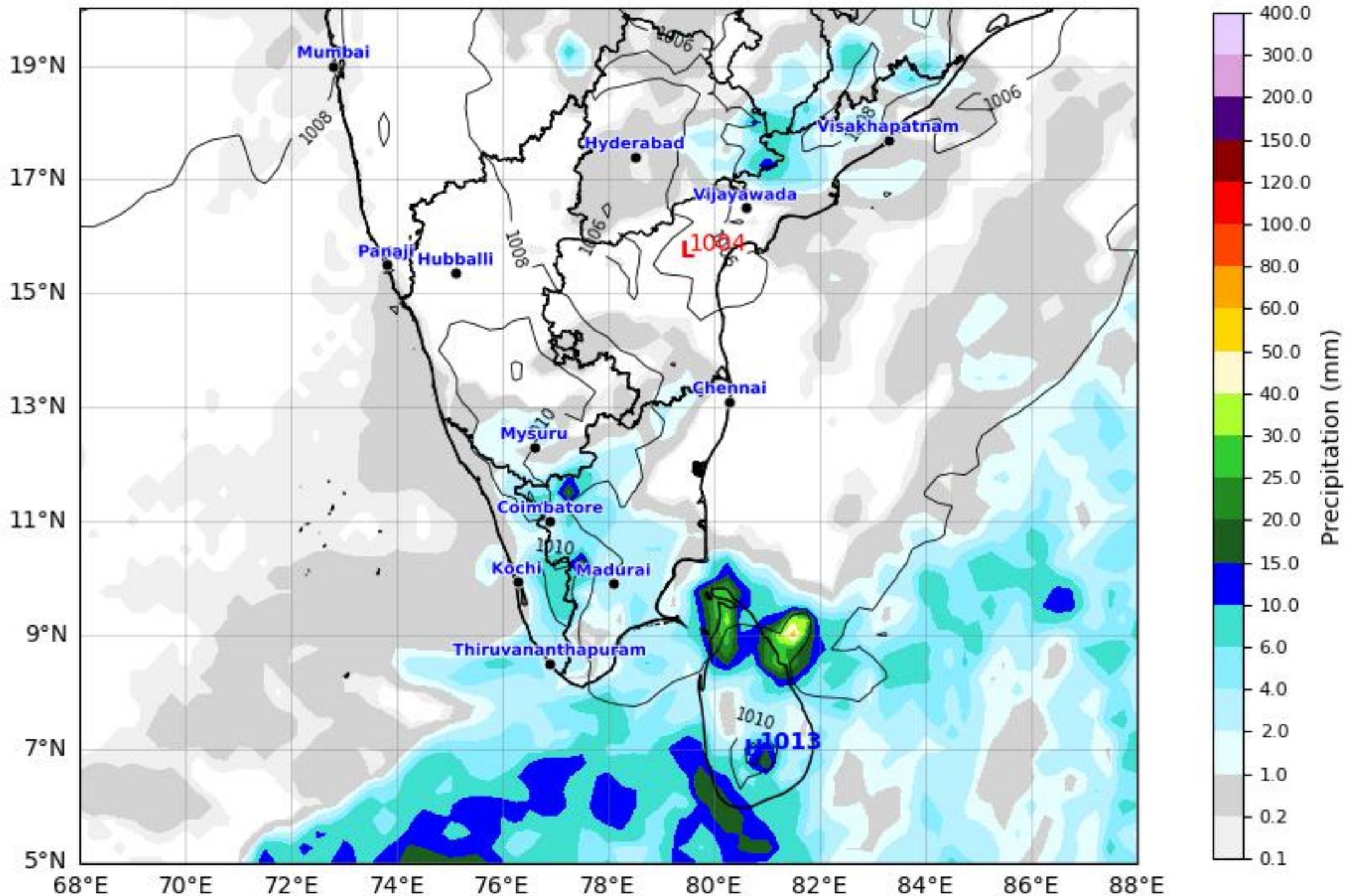


Daily Precipitation Forecast 240 Hours South India Region



GFS run 23 Apr 2026 00Z valid for 03 May 2026 00Z
KOLA - South by gujaratweather.com - Data: NOMADS

KOLA: Kathiawar Ocean & Land Atmosphere - Experimental Mapping Platform



Disclaimer: The images provided by gujaratweather.com are experimental and for informational purposes only. They are not official forecasts. We do not guarantee the accuracy, timeliness, or completeness of these images, which may contain errors due to data download scripts or software limitations. For reliable weather forecasts, Please refer to official agencies such as Indian Meteorological Department or NOMADS. The base map shown does not represent political boundaries.

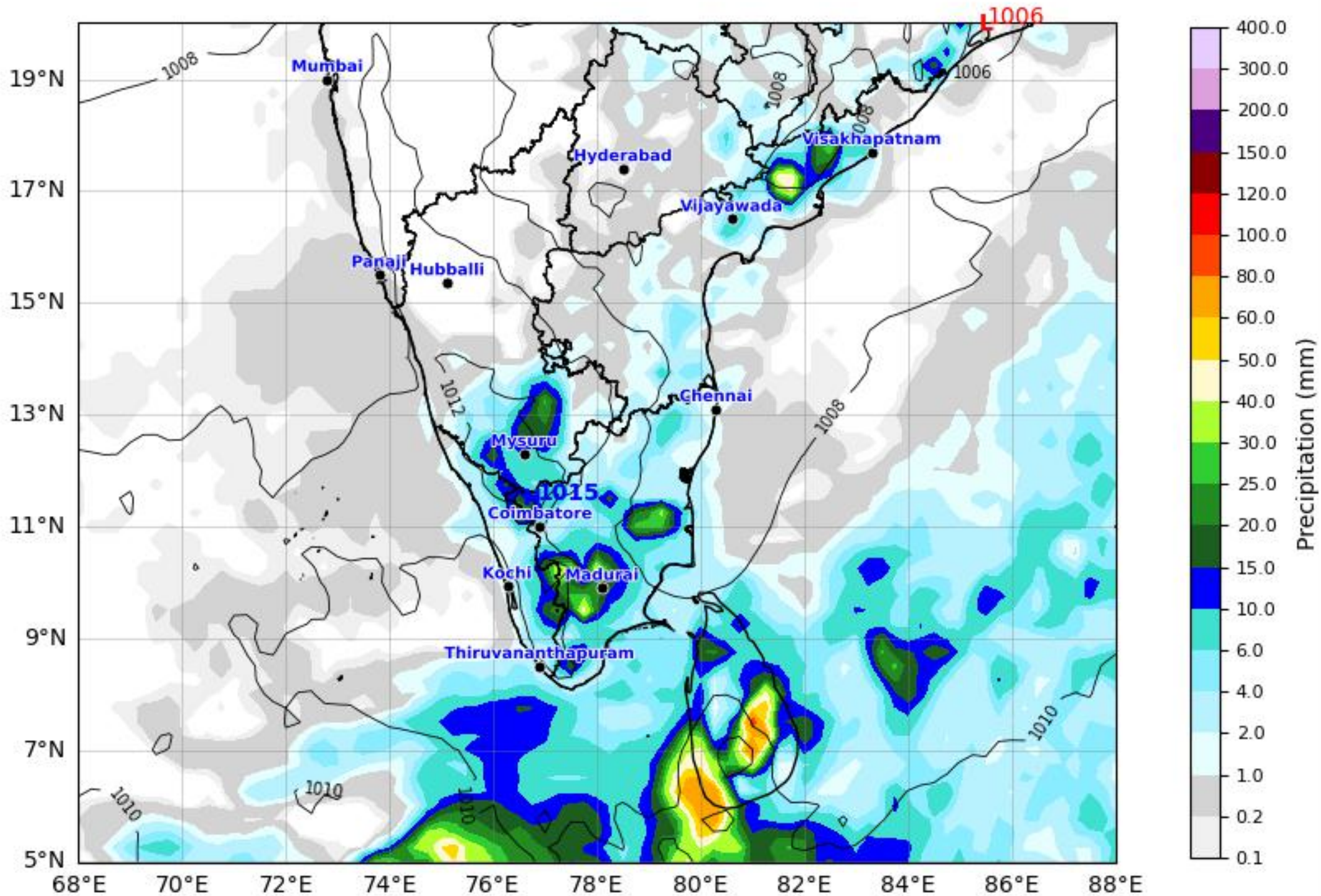


Daily Precipitation Forecast 264 Hours South India Region



GFS run 23 Apr 2026 00Z valid for 04 May 2026 00Z
KOLA - South by gujaratweather.com - Data: NOMADS

KOLA: Kathiawar Ocean & Land Atmosphere - Experimental Mapping Mapping Platform



Disclaimer: The images provided by gujaratweather.com are experimental and for informational purposes only. They are not official forecasts. We do not guarantee the accuracy, timeliness, or completeness of these images, which may contain errors due to data download scripts or software limitations. For reliable weather forecasts, Please refer to official agencies such as Indian Meteorological Department or NOMADS.
The base map shown does not represent political boundaries.

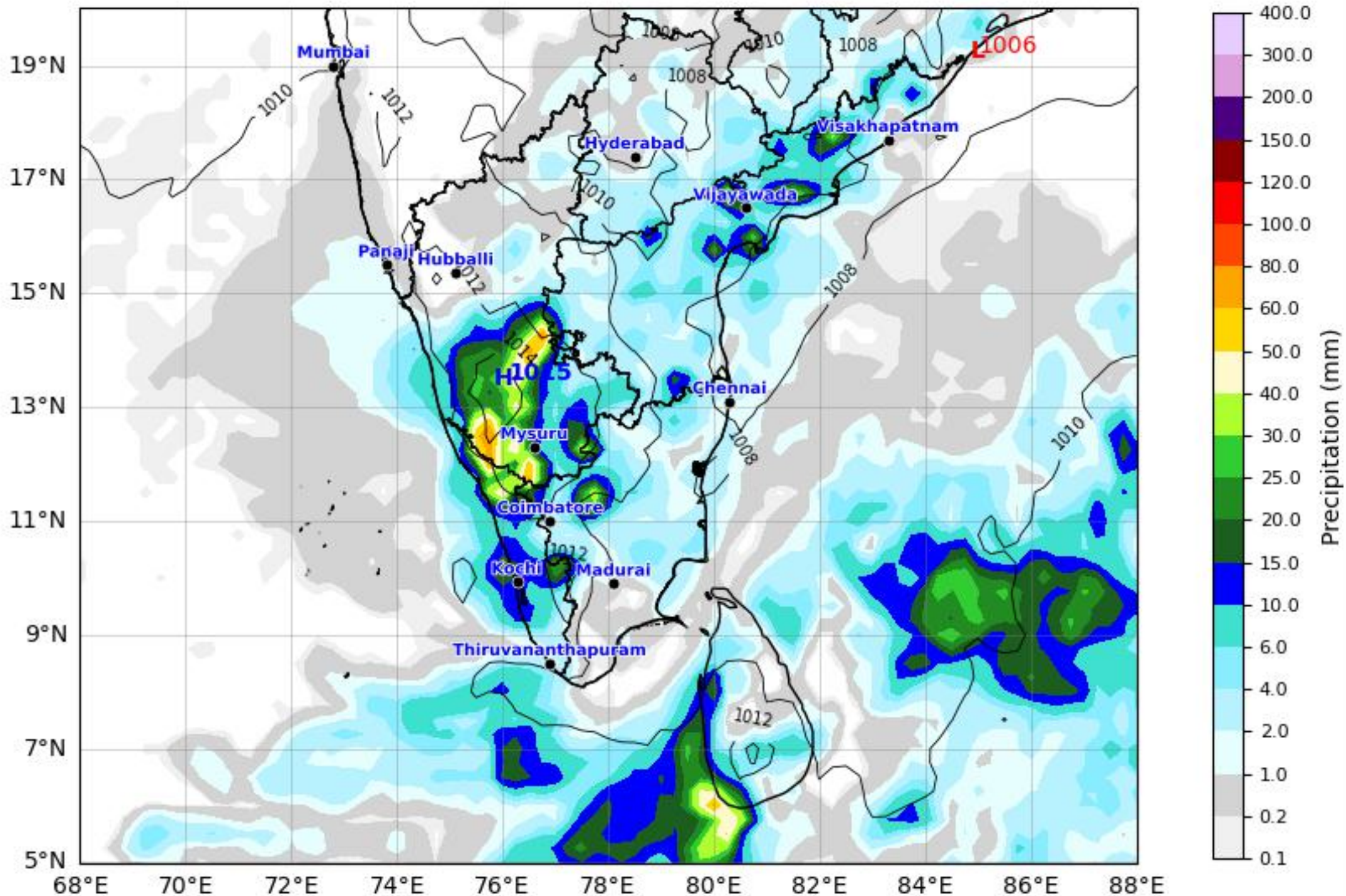


Daily Precipitation Forecast 288 Hours South India Region



GFS run 23 Apr 2026 00Z valid for 05 May 2026 00Z
KOLA - South by gujaratweather.com - Data: NOMADS

KOLA: Kathiawar Ocean & Land Atmosphere - Experimental Mapping Platform



Disclaimer: The images provided by gujaratweather.com are experimental and for informational purposes only. They are not official forecasts. We do not guarantee the accuracy, timeliness, or completeness of these images, which may contain errors due to data download scripts or software limitations. For reliable weather forecasts, Please refer to official agencies such as Indian Meteorological Department or NOMADS.
The base map shown does not represent political boundaries.



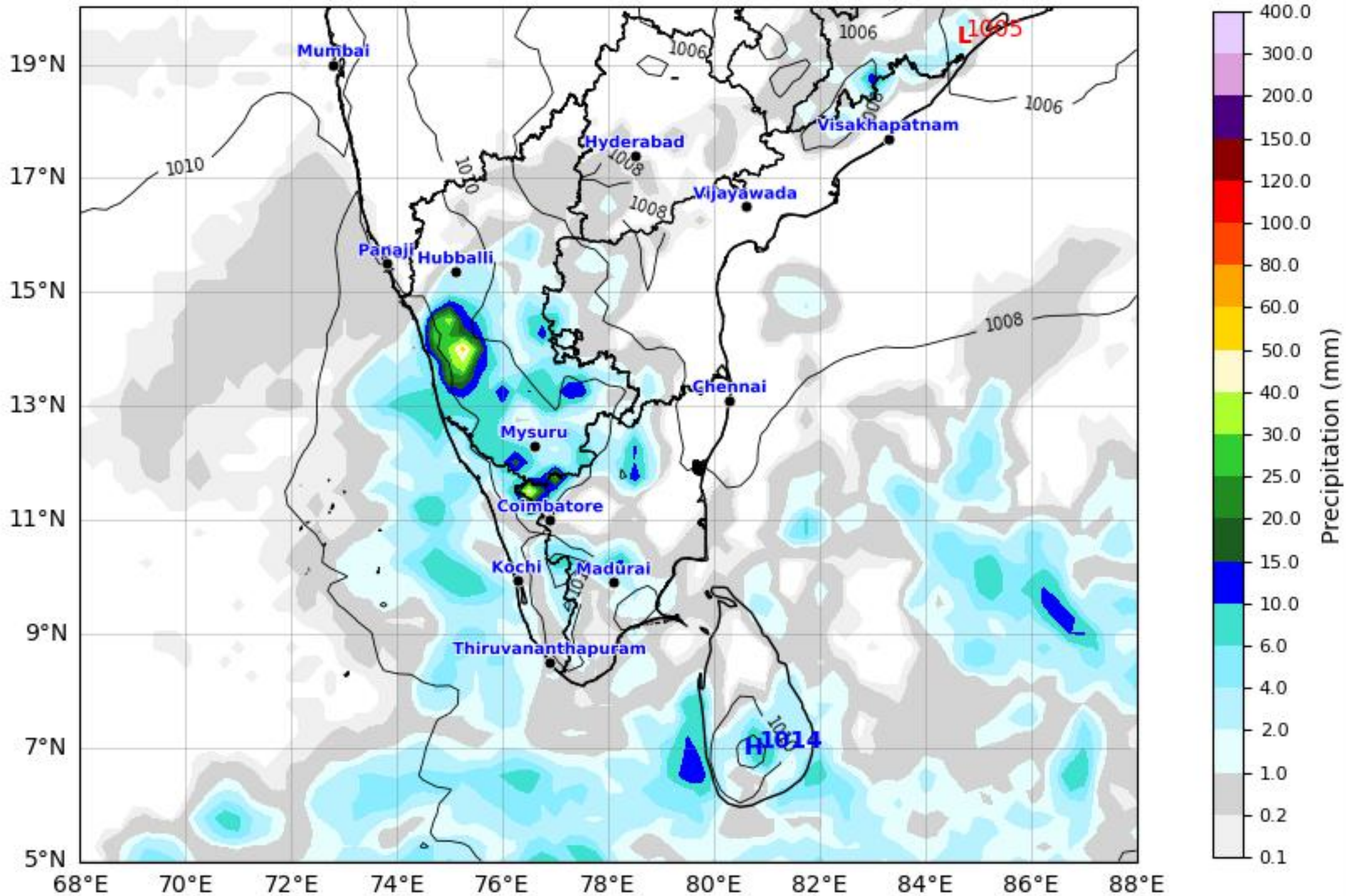
Daily Precipitation Forecast 312 Hours

South India Region



GFS run 23 Apr 2026 00Z valid for 06 May 2026 00Z
 KOLA - South by gujaratweather.com - Data: NOMADS

KOLA: Kathiawar Ocean & Land Atmosphere - Experimental Mapping Mapping Platform



Disclaimer: The images provided by gujaratweather.com are experimental and for informational purposes only. They are not official forecasts. We do not guarantee the accuracy, timeliness, or completeness of these images, which may contain errors due to data download scripts or software limitations. For reliable weather forecasts, Please refer to official agencies such as Indian Meteorological Department or NOMADS. The base map shown does not represent political boundaries.

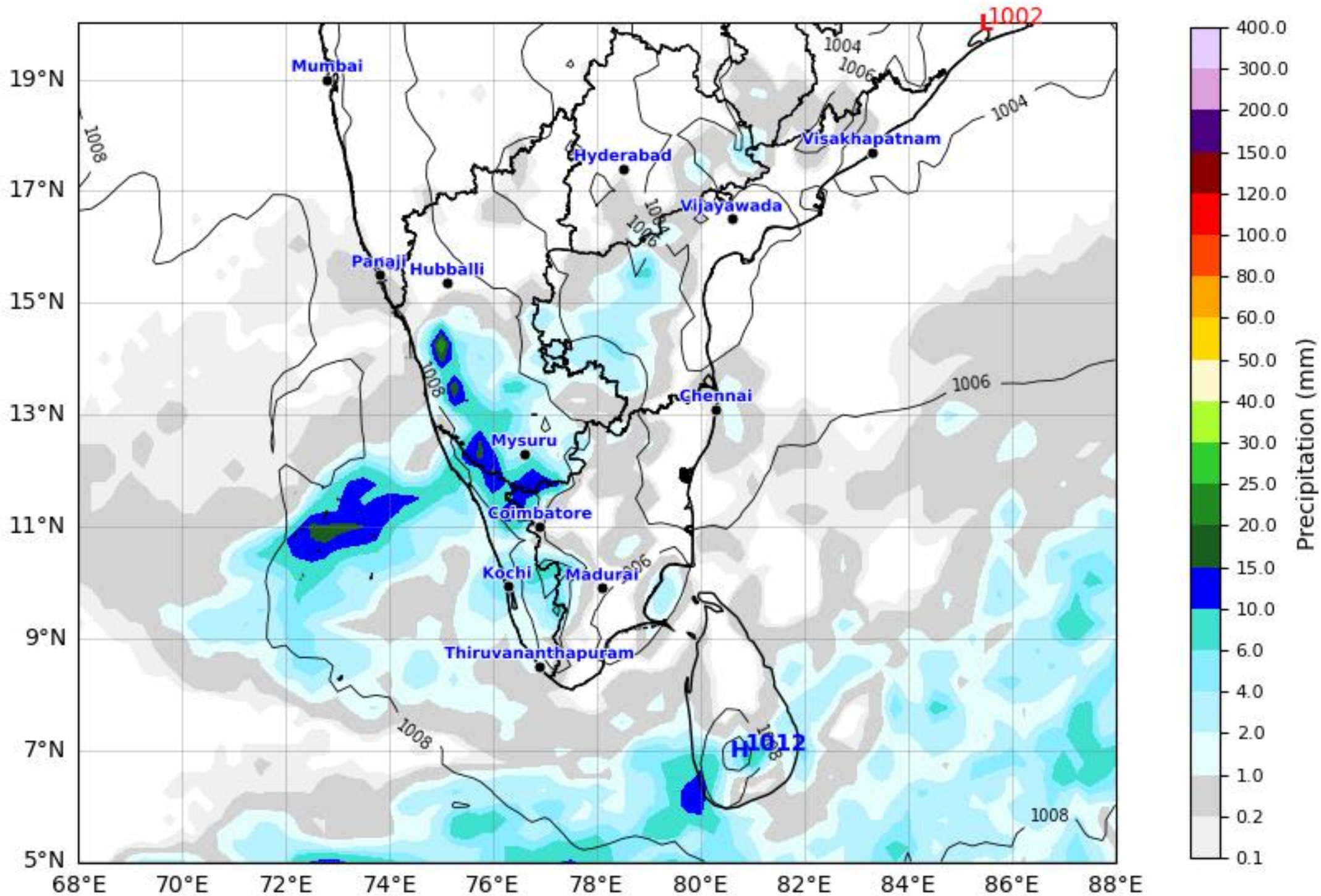


Daily Precipitation Forecast 336 Hours South India Region



GFS run 23 Apr 2026 00Z valid for 07 May 2026 00Z
KOLA - South by gujaratweather.com - Data: NOMADS

KOLA: Kathiawar Ocean & Land Atmosphere - Experimental Mapping Mapping Platform



Disclaimer: The images provided by gujaratweather.com are experimental and for informational purposes only. They are not official forecasts. We do not guarantee the accuracy, timeliness, or completeness of these images, which may contain errors due to data download scripts or software limitations. For reliable weather forecasts, Please refer to official agencies such as Indian Meteorological Department or NOMADS.
The base map shown does not represent political boundaries.

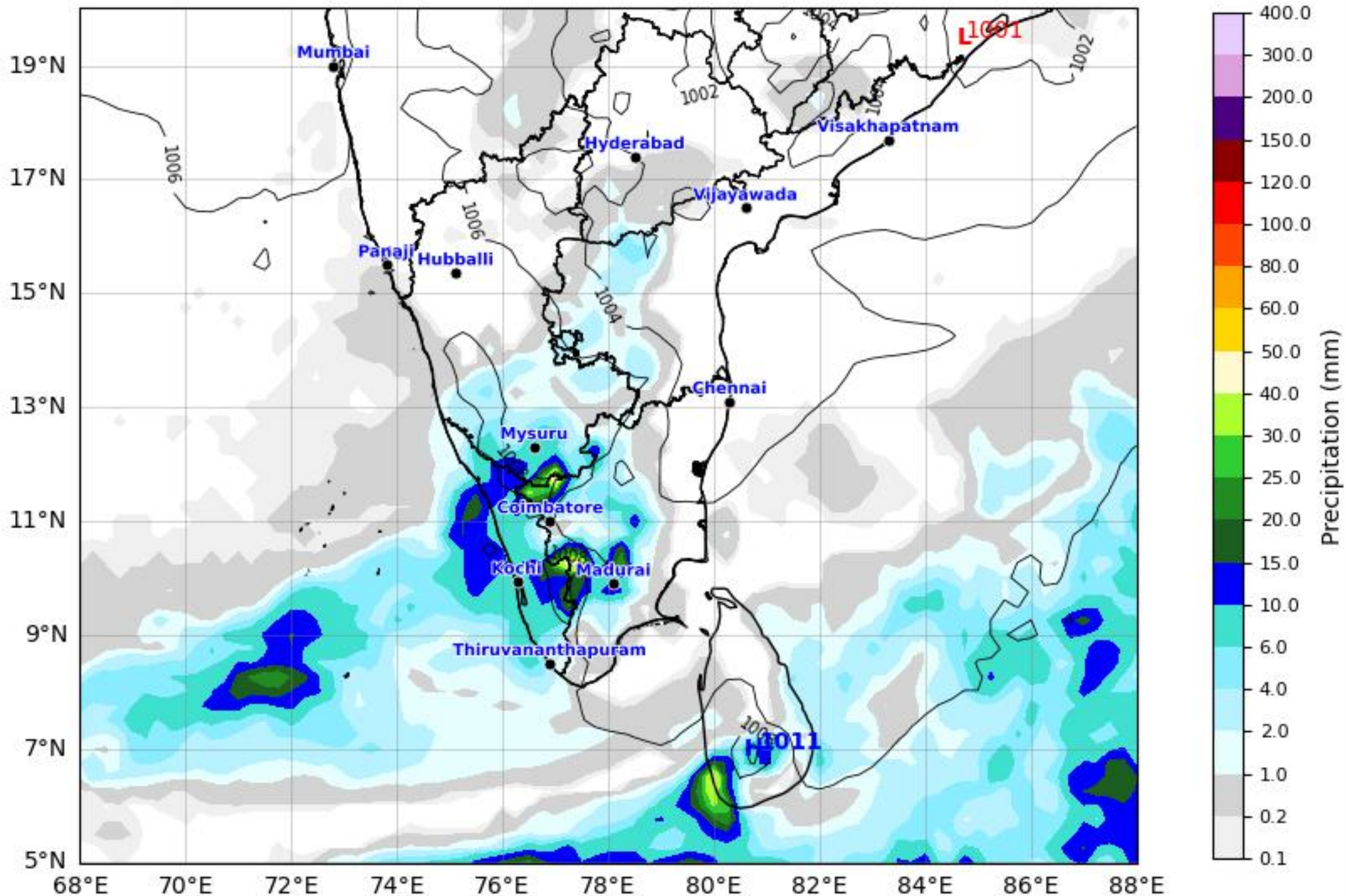


Daily Precipitation Forecast 360 Hours South India Region



GFS run 23 Apr 2026 00Z valid for 08 May 2026 00Z
KOLA - South by gujaratweather.com - Data: NOMADS

KOLA: Kathiawar Ocean & Land Atmosphere - Experimental Mapping Platform



Disclaimer: The images provided by gujaratweather.com are experimental and for informational purposes only. They are not official forecasts. We do not guarantee the accuracy, timeliness, or completeness of these images, which may contain errors due to data download scripts or software limitations. For reliable weather forecasts, Please refer to official agencies such as Indian Meteorological Department or NOMADS.
The base map shown does not represent political boundaries.

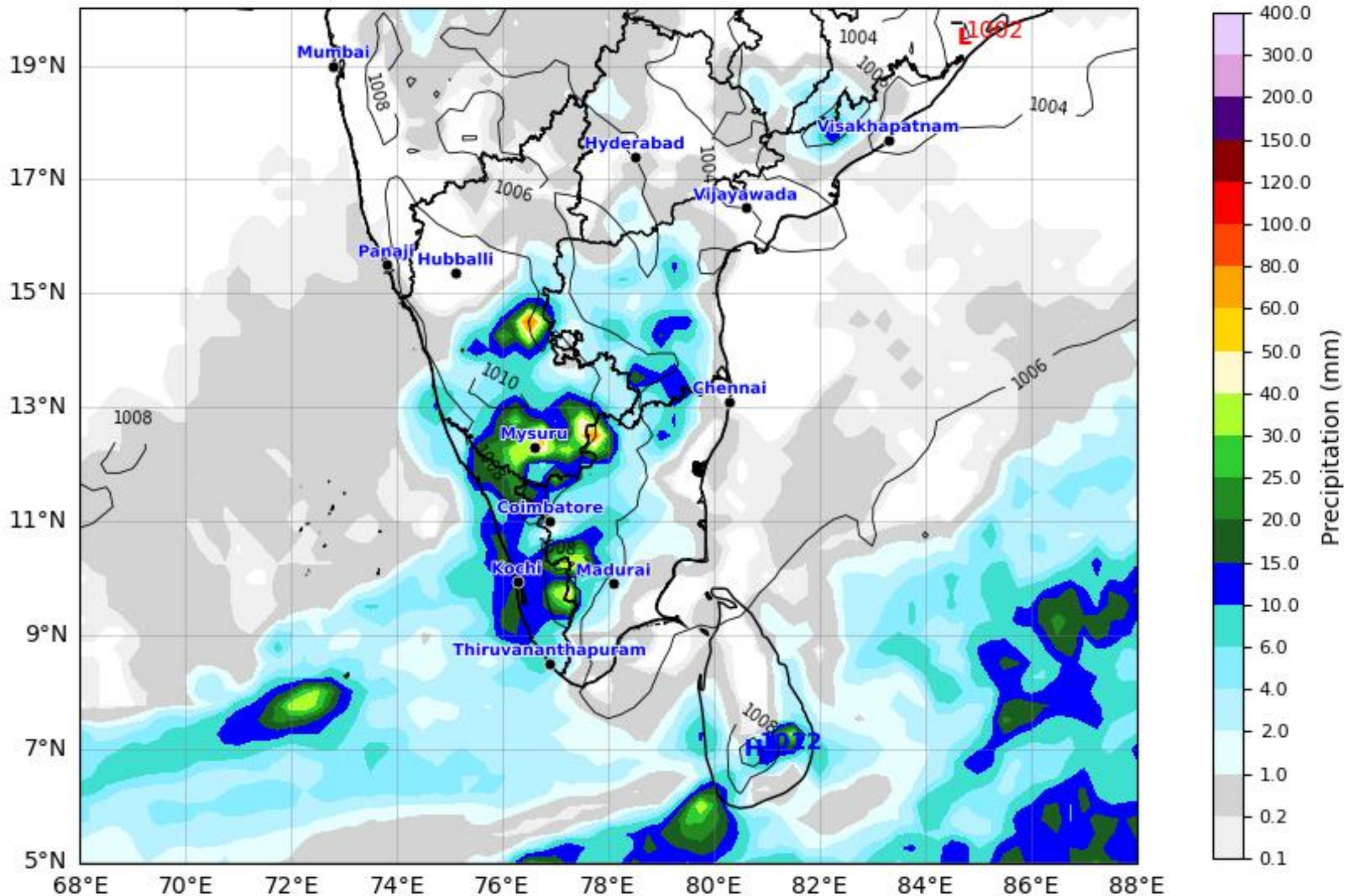


Daily Precipitation Forecast 384 Hours South India Region



GFS run 23 Apr 2026 00Z valid for 09 May 2026 00Z
KOLA - South by gujaratweather.com - Data: NOMADS

KOLA: Kathiawar Ocean & Land Atmosphere - Experimental Mapping Platform



Disclaimer: The images provided by gujaratweather.com are experimental and for informational purposes only. They are not official forecasts. We do not guarantee the accuracy, timeliness, or completeness of these images, which may contain errors due to data download scripts or software limitations. For reliable weather forecasts, Please refer to official agencies such as Indian Meteorological Department or NOMADS.
The base map shown does not represent political boundaries.