



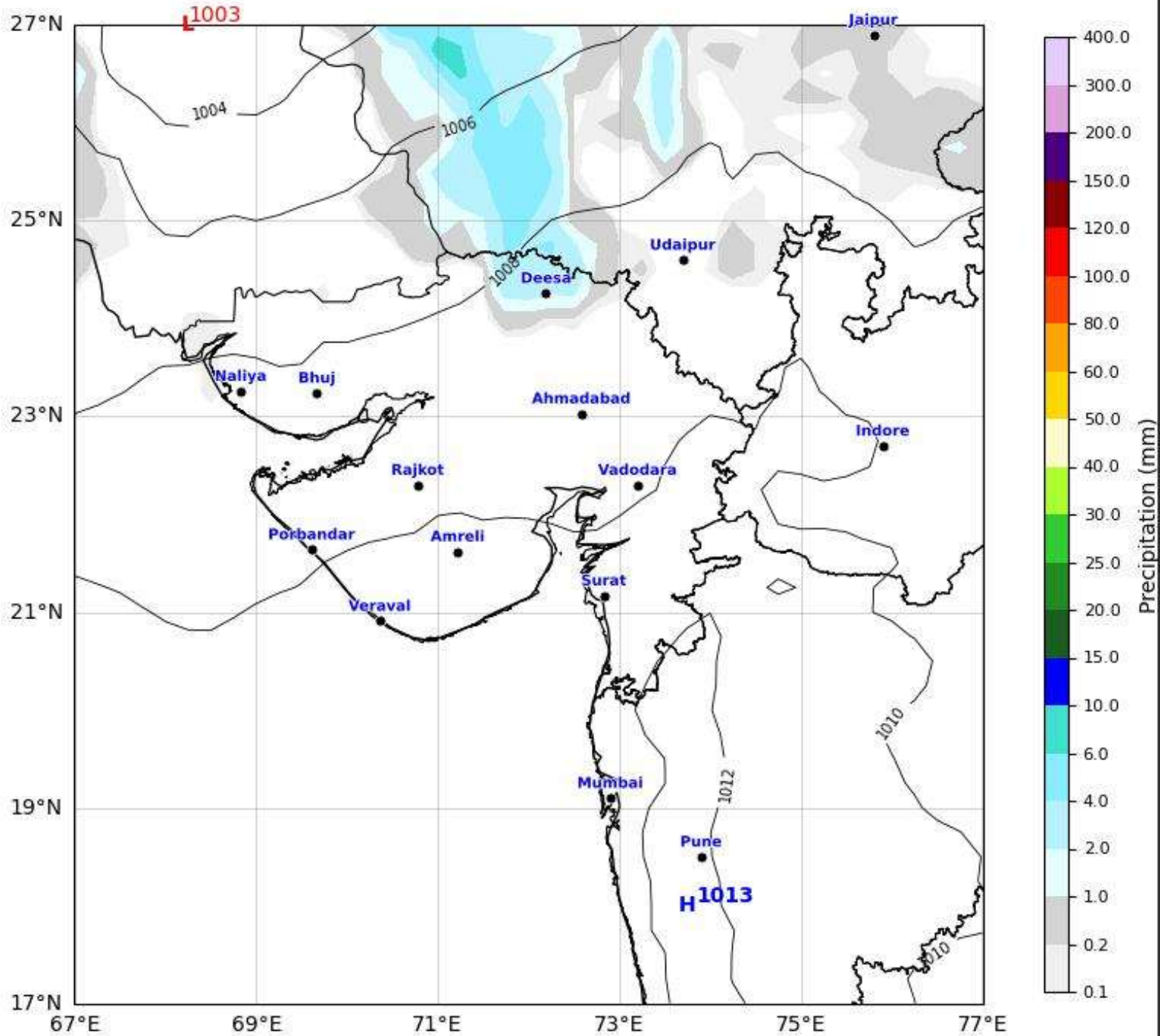
# Daily Precipitation Forecast 24 Hours Gujarat & Surrounding Region



GFS run 06 Apr 2026 00Z valid for 07 Apr 2026 00Z

KOLA - West by gujaratweather.com - Data: NOMADS

KOLA: Kathiawar Ocean & Land Atmosphere - Experimental Mapping Mapping Platform



Disclaimer: The images provided by gujaratweather.com are experimental and for informational purposes only. They are not official forecasts. We do not guarantee the accuracy, timeliness, or completeness of these images, which may contain errors due to data download scripts or software limitations. For reliable weather forecasts, Please refer to official agencies such as Indian Meteorological Department or NOAA- NOMADS. The base map shown does not represent political boundaries.



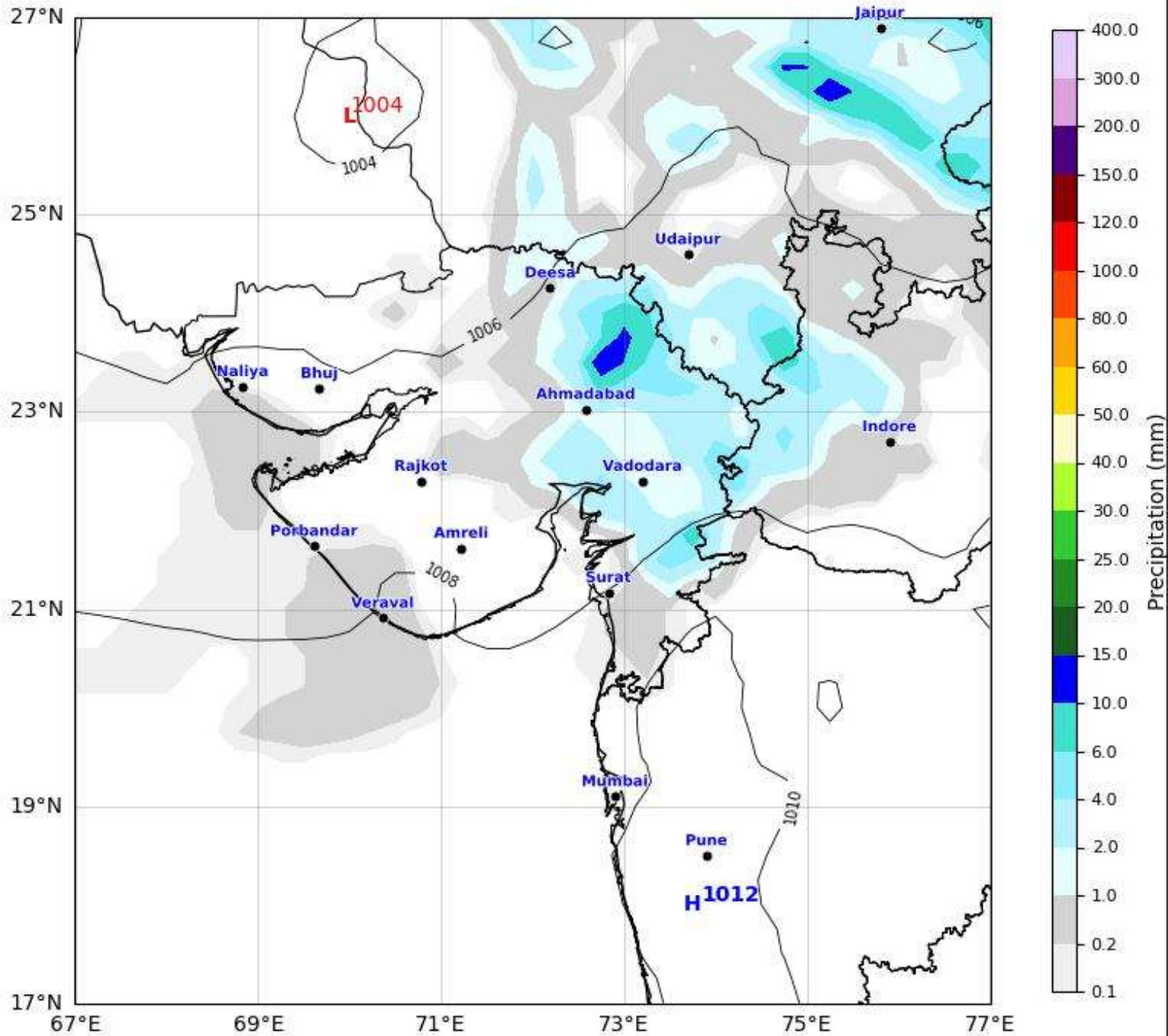
# Daily Precipitation Forecast 48 Hours Gujarat & Surrounding Region



GFS run 06 Apr 2026 00Z valid for 08 Apr 2026 00Z

KOLA - West by gujaratweather.com - Data: NOMADS

KOLA: Kathiawar Ocean & Land Atmosphere - Experimental Mapping Mapping Platform



Disclaimer: The images provided by gujaratweather.com are experimental and for informational purposes only. They are not official forecasts. We do not guarantee the accuracy, timeliness, or completeness of these images, which may contain errors due to data download scripts or software limitations. For reliable weather forecasts, Please refer to official agencies such as Indian Meteorological Department or NOAA- NOMADS. The base map shown does not represent political boundaries.



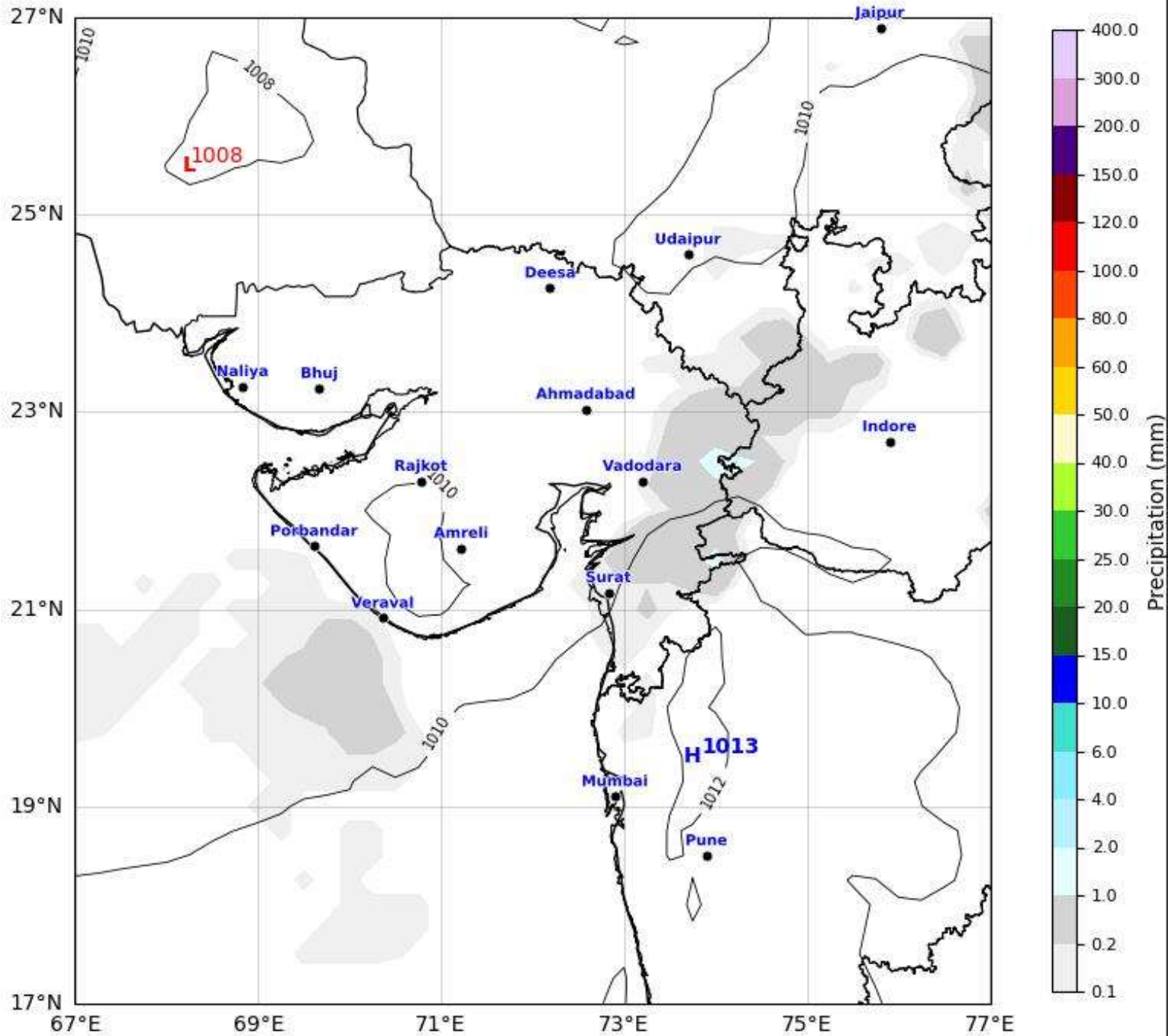
# Daily Precipitation Forecast 72 Hours Gujarat & Surrounding Region



GFS run 06 Apr 2026 00Z valid for 09 Apr 2026 00Z

KOLA - West by gujaratweather.com - Data: NOMADS

KOLA: Kathiawar Ocean & Land Atmosphere - Experimental Mapping Mapping Platform



Disclaimer: The images provided by gujaratweather.com are experimental and for informational purposes only. They are not official forecasts. We do not guarantee the accuracy, timeliness, or completeness of these images, which may contain errors due to data download scripts or software limitations. For reliable weather forecasts, Please refer to official agencies such as Indian Meteorological Department or NOAA- NOMADS. The base map shown does not represent political boundaries.