



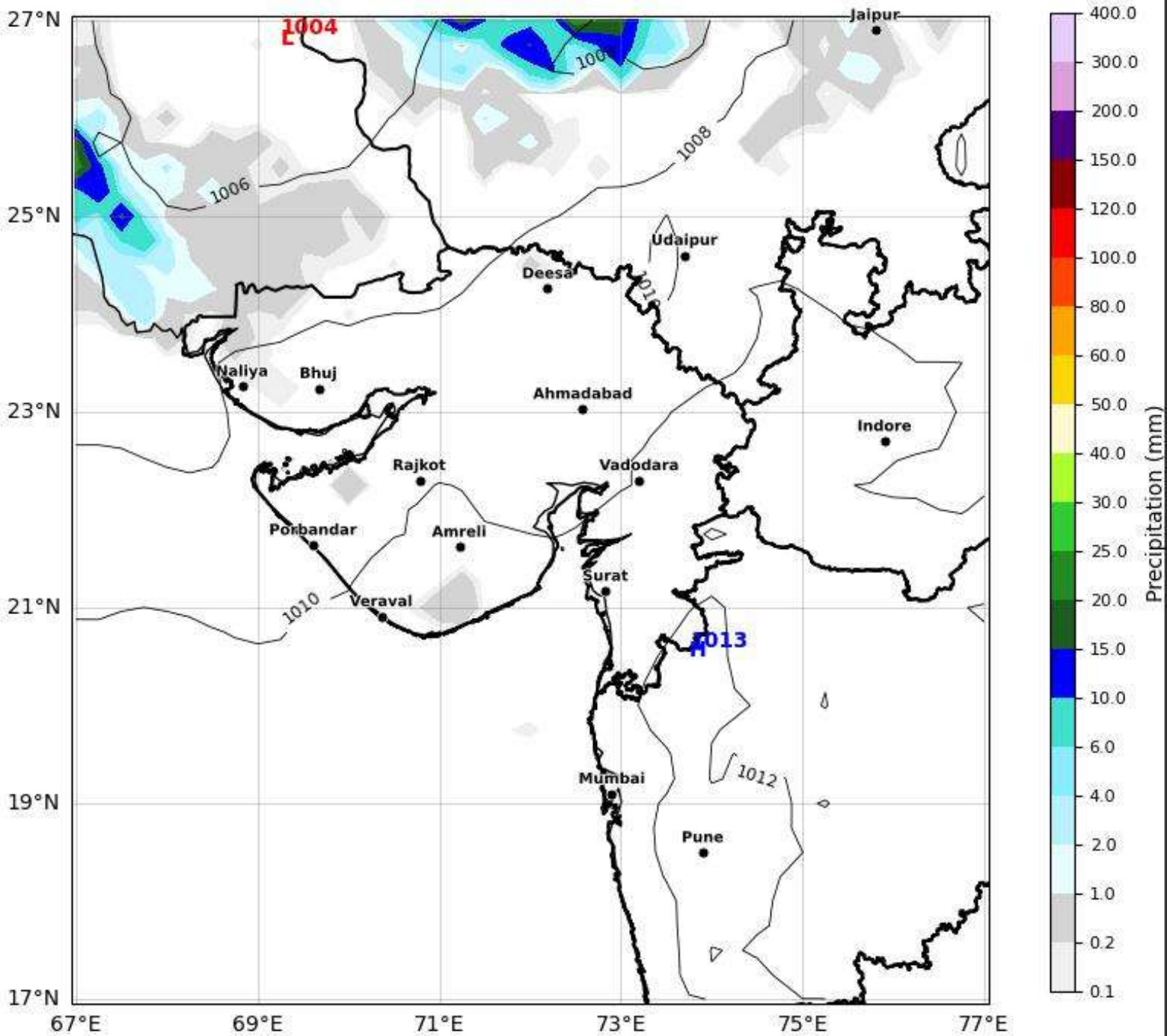
Daily Precipitation Forecast (24 HR) Gujarat & Surrounding Region



Based on 06 Apr 2026 00Z valid for 07 Apr 2026 00Z

KOLA - West by gujaratweather.com - Data: ECMWF

KOLA: Kathiawar Ocean & Land Atmosphere - Experimental Weather Mapping Platform



Disclaimer: The images provided by gujaratweather.com are experimental and for informational purposes only. They are not official forecasts. We do not guarantee the accuracy, timeliness, or completeness of these images, which may contain errors due to data download scripts or software limitations. For reliable weather forecasts, Please refer to official agencies such as Indian Meteorological Department or ECMWF. The base map shown does not represent political boundaries.



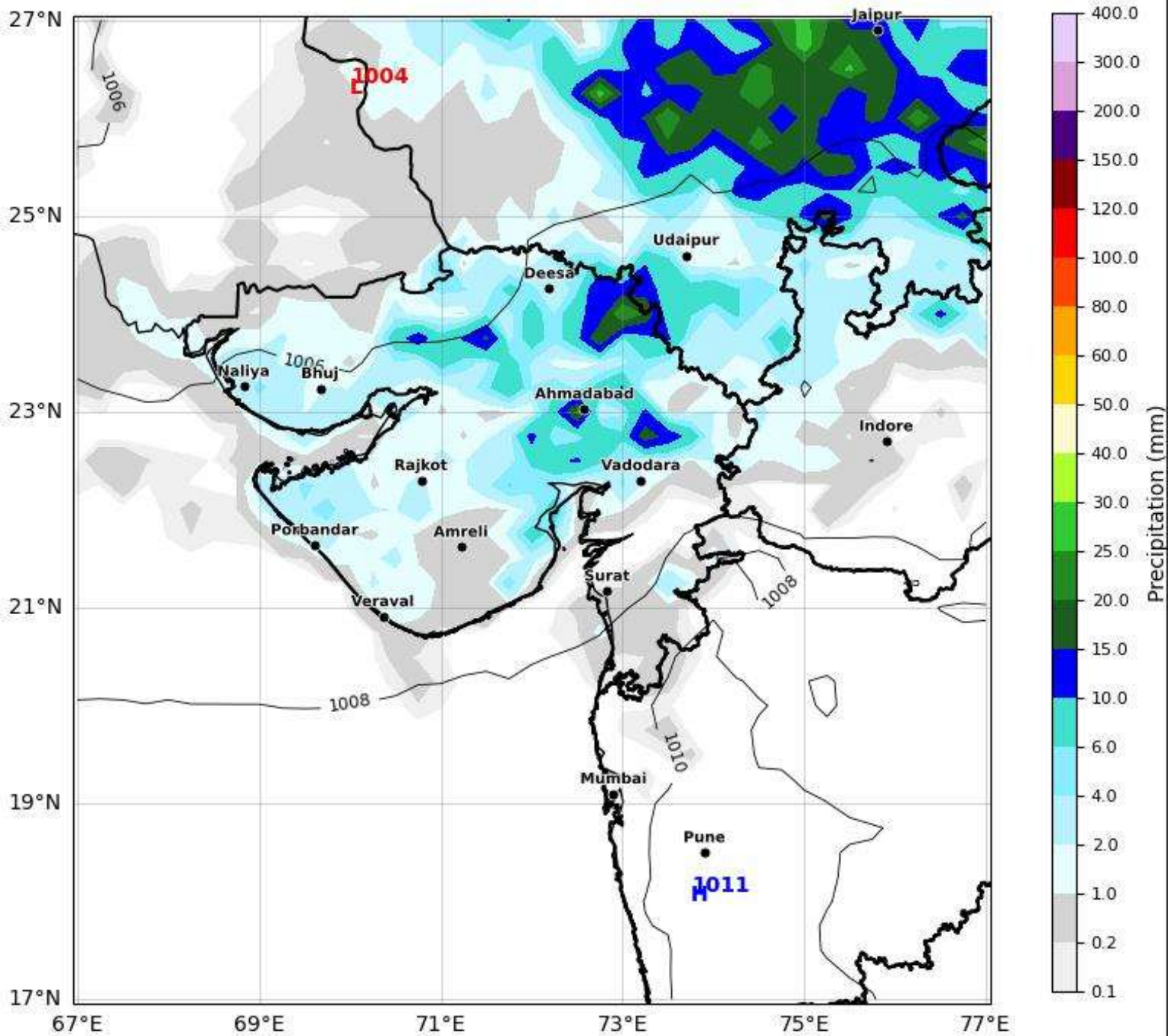
Daily Precipitation Forecast (48 HR) Gujarat & Surrounding Region



Based on 06 Apr 2026 00Z valid for 08 Apr 2026 00Z

KOLA - West by gujaratweather.com - Data: ECMWF

KOLA: Kathiawar Ocean & Land Atmosphere - Experimental Weather Mapping Platform



Disclaimer: The images provided by gujaratweather.com are experimental and for informational purposes only. They are not official forecasts. We do not guarantee the accuracy, timeliness, or completeness of these images, which may contain errors due to data download scripts or software limitations. For reliable weather forecasts, Please refer to official agencies such as Indian Meteorological Department or ECMWF. The base map shown does not represent political boundaries.



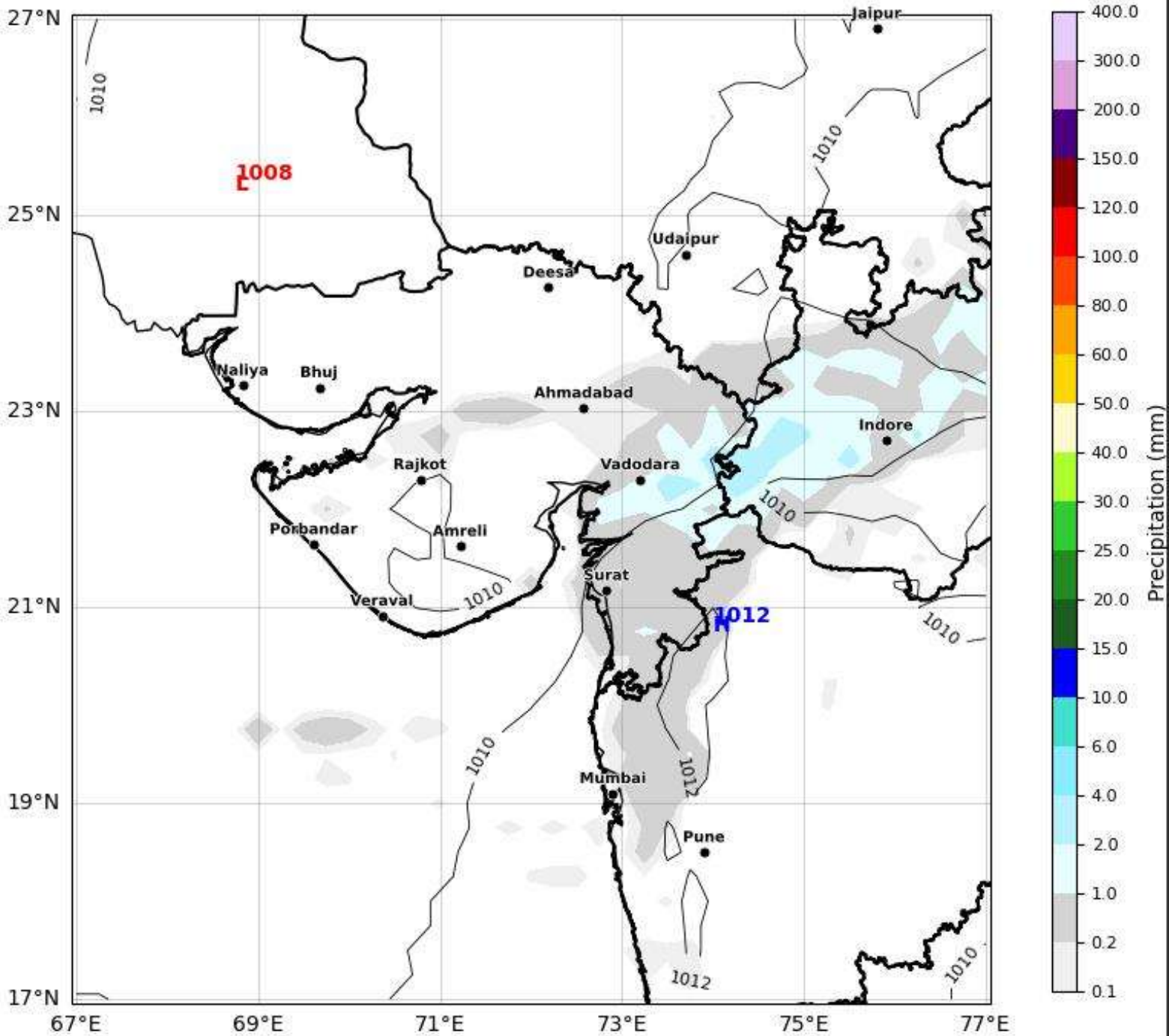
Daily Precipitation Forecast (72 HR) Gujarat & Surrounding Region

Based on 06 Apr 2026 00Z valid for 09 Apr 2026 00Z

KOLA - West by gujaratweather.com - Data: ECMWF



KOLA: Kathiawar Ocean & Land Atmosphere - Experimental Weather Mapping Platform



Disclaimer: The images provided by gujaratweather.com are experimental and for informational purposes only. They are not official forecasts. We do not guarantee the accuracy, timeliness, or completeness of these images, which may contain errors due to data download scripts or software limitations. For reliable weather forecasts, Please refer to official agencies such as Indian Meteorological Department or ECMWF. The base map shown does not represent political boundaries.