



# MSLP Analysis Map

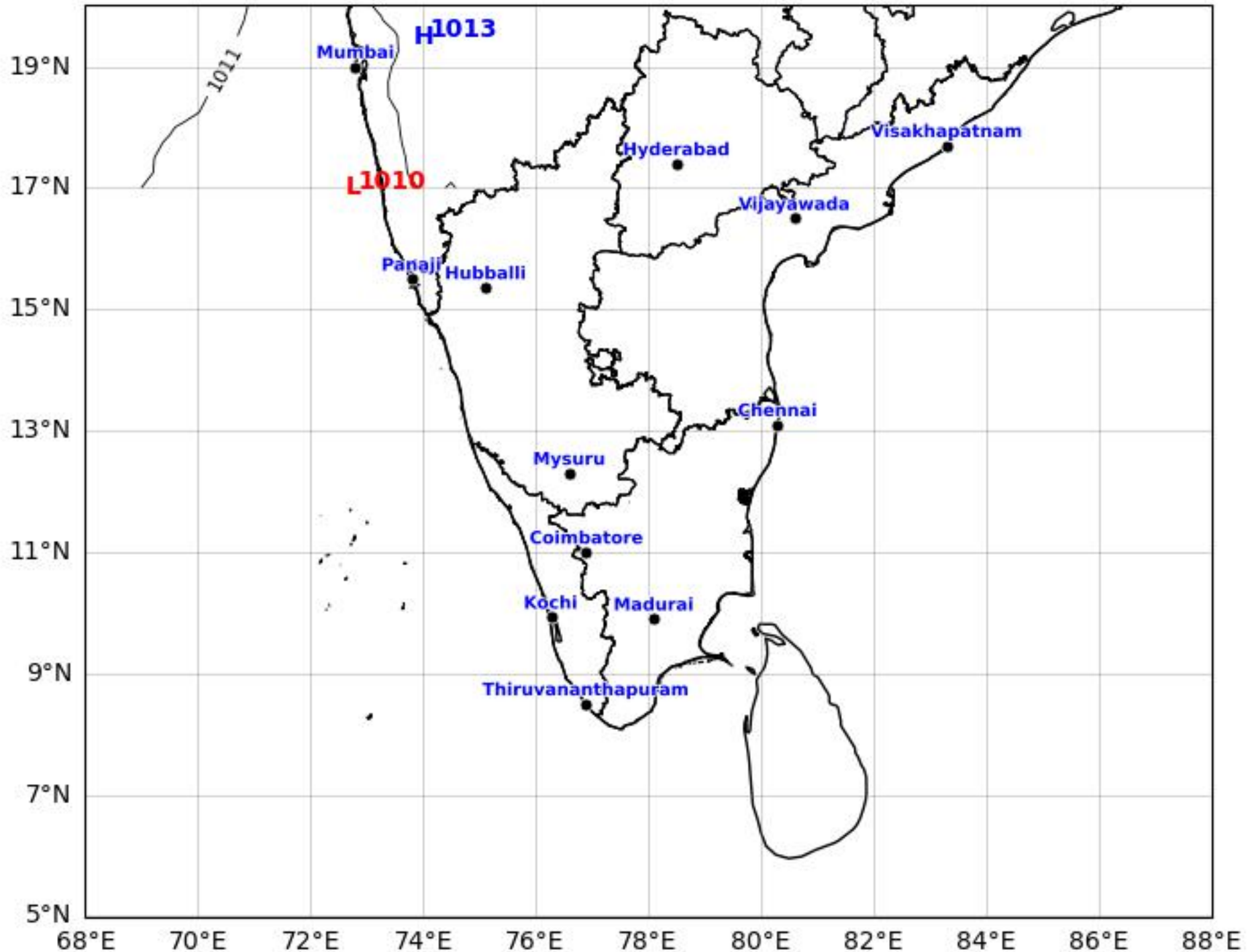
## South India Region

GFS run 04 Mar 2026 00Z



KOLA - South by gujaratweather.com - Data: NOMADS

KOLA: Kathiawar Ocean & Land Atmosphere - Experimental Weather Mapping Platform



Disclaimer: The images provided by gujaratweather.com are experimental and for informational purposes only. They are not official forecasts. We do not guarantee the accuracy, timeliness, or completeness of these images, which may contain errors due to data download scripts or software limitations. For reliable weather forecasts, Please refer to official agencies such as Indian Meteorological Department or NOMADS. The base map shown does not represent political boundaries.

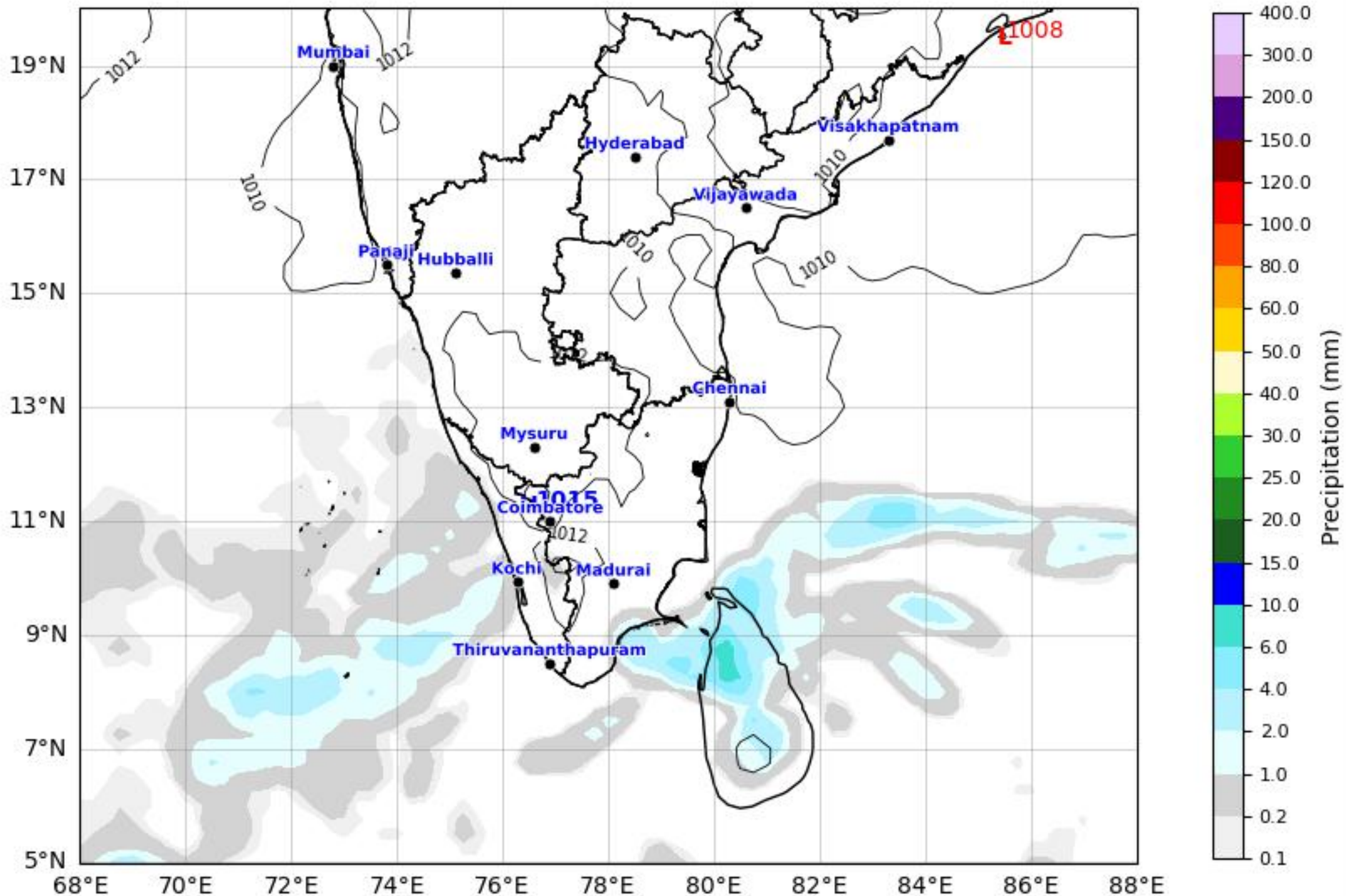


# Daily Precipitation Forecast 24 Hours South India Region



GFS run 04 Mar 2026 00Z valid for 05 Mar 2026 00Z  
KOLA - South by gujaratweather.com - Data: NOMADS

KOLA: Kathiawar Ocean & Land Atmosphere - Experimental Mapping Mapping Platform



Disclaimer: The images provided by gujaratweather.com are experimental and for informational purposes only. They are not official forecasts. We do not guarantee the accuracy, timeliness, or completeness of these images, which may contain errors due to data download scripts or software limitations. For reliable weather forecasts, Please refer to official agencies such as Indian Meteorological Department or NOMADS. The base map shown does not represent political boundaries.

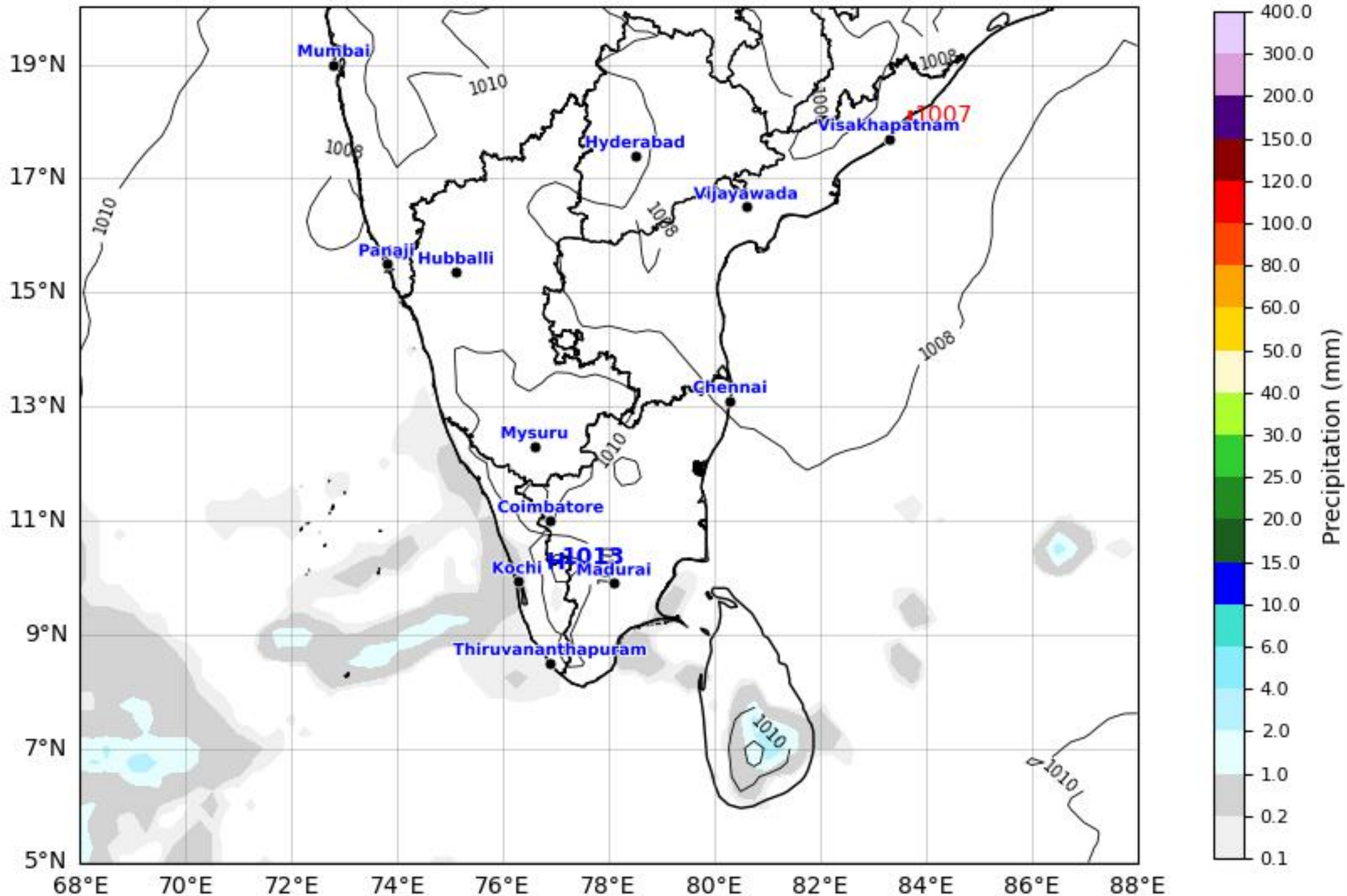


# Daily Precipitation Forecast 48 Hours South India Region



GFS run 04 Mar 2026 00Z valid for 06 Mar 2026 00Z  
KOLA - South by gujaratweather.com - Data: NOMADS

KOLA: Kathiawar Ocean & Land Atmosphere - Experimental Mapping Platform



Disclaimer: The images provided by gujaratweather.com are experimental and for informational purposes only. They are not official forecasts. We do not guarantee the accuracy, timeliness, or completeness of these images, which may contain errors due to data download scripts or software limitations. For reliable weather forecasts, Please refer to official agencies such as Indian Meteorological Department or NOMADS. The base map shown does not represent political boundaries.

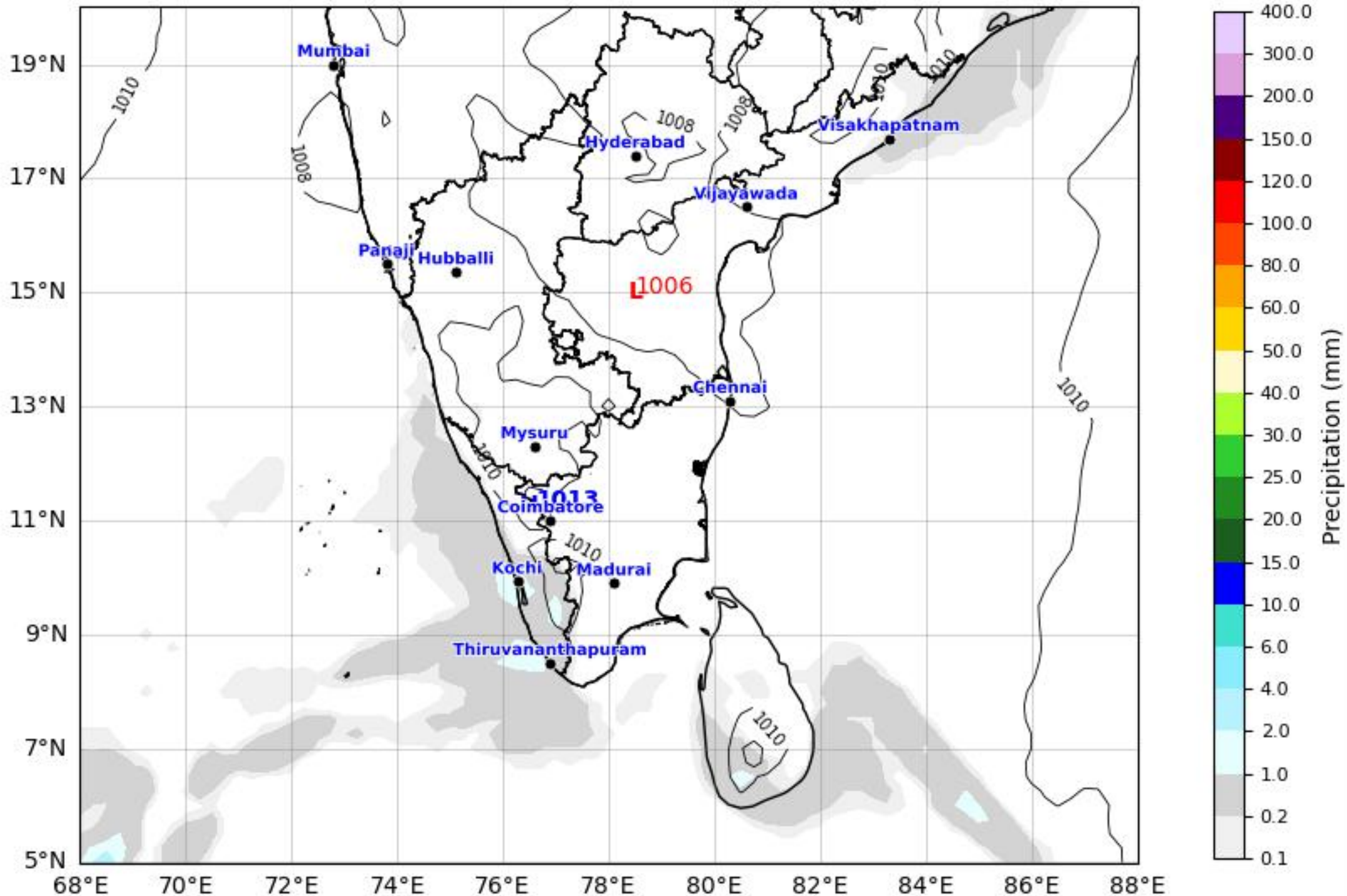


# Daily Precipitation Forecast 72 Hours South India Region



GFS run 04 Mar 2026 00Z valid for 07 Mar 2026 00Z  
KOLA - South by gujaratweather.com - Data: NOMADS

KOLA: Kathiawar Ocean & Land Atmosphere - Experimental Mapping Mapping Platform



Disclaimer: The images provided by gujaratweather.com are experimental and for informational purposes only. They are not official forecasts. We do not guarantee the accuracy, timeliness, or completeness of these images, which may contain errors due to data download scripts or software limitations. For reliable weather forecasts, Please refer to official agencies such as Indian Meteorological Department or NOMADS. The base map shown does not represent political boundaries.

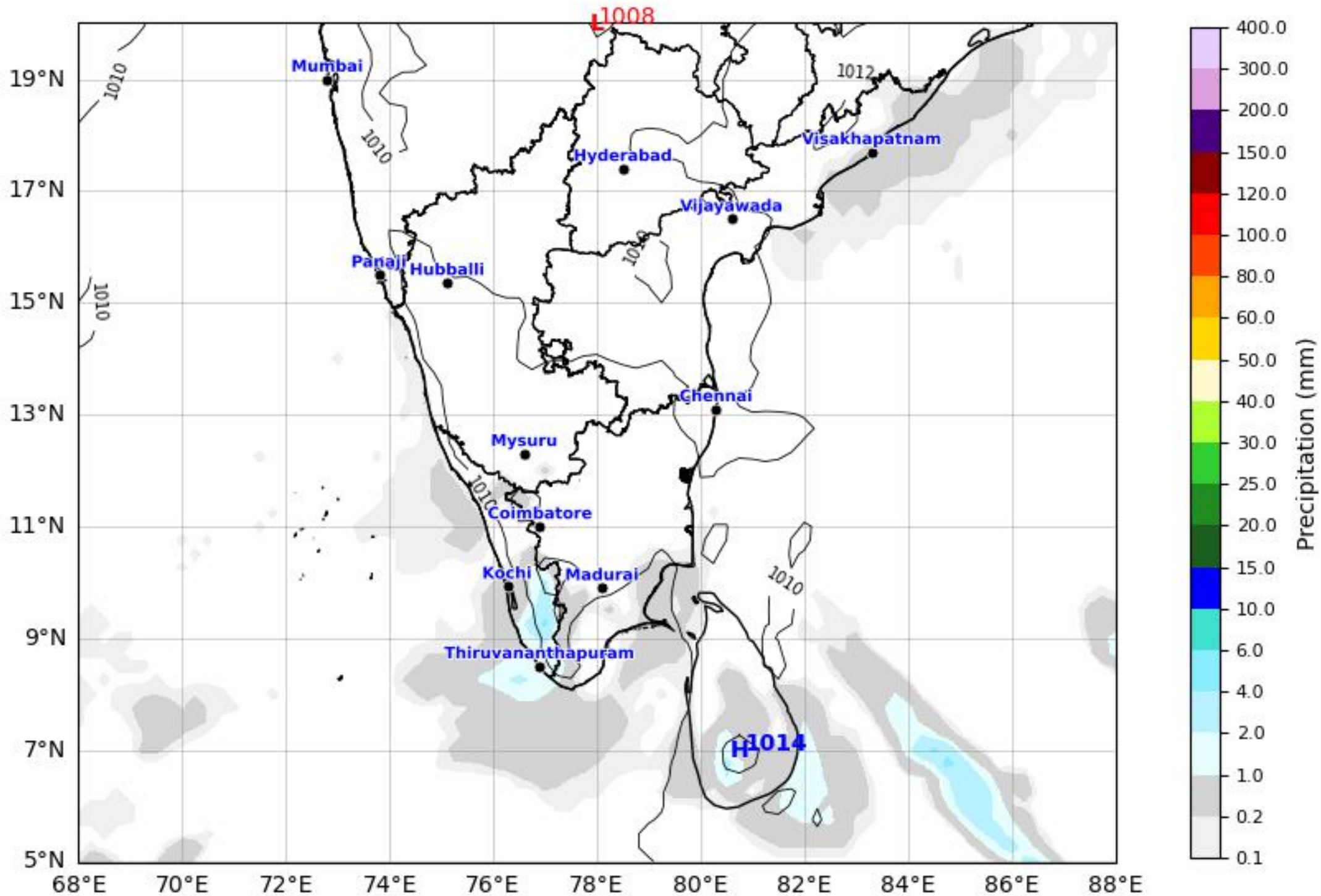


# Daily Precipitation Forecast 96 Hours South India Region



GFS run 04 Mar 2026 00Z valid for 08 Mar 2026 00Z  
KOLA - South by gujaratweather.com - Data: NOMADS

KOLA: Kathiawar Ocean & Land Atmosphere - Experimental Mapping Mapping Platform



Disclaimer: The images provided by gujaratweather.com are experimental and for informational purposes only. They are not official forecasts. We do not guarantee the accuracy, timeliness, or completeness of these images, which may contain errors due to data download scripts or software limitations. For reliable weather forecasts, Please refer to official agencies such as Indian Meteorological Department or NOMADS. The base map shown does not represent political boundaries.



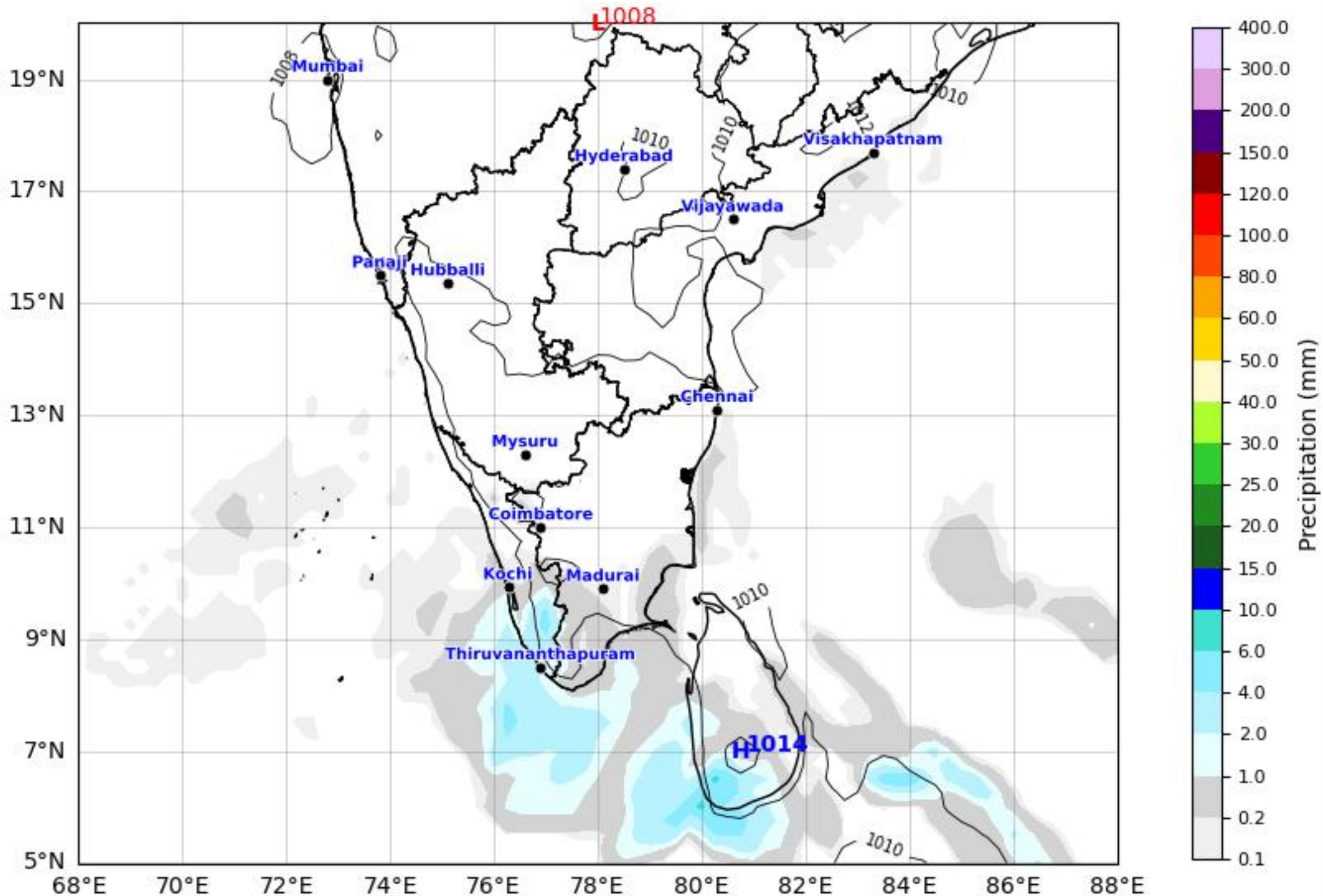
# Daily Precipitation Forecast 120 Hours South India Region



GFS run 04 Mar 2026 00Z valid for 09 Mar 2026 00Z

KOLA - South by gujaratweather.com - Data: NOMADS

KOLA: Kathiawar Ocean & Land Atmosphere - Experimental Mapping Platform



Disclaimer: The images provided by gujaratweather.com are experimental and for informational purposes only. They are not official forecasts. We do not guarantee the accuracy, timeliness, or completeness of these images, which may contain errors due to data download scripts or software limitations. For reliable weather forecasts, Please refer to official agencies such as Indian Meteorological Department or NOMADS. The base map shown does not represent political boundaries.



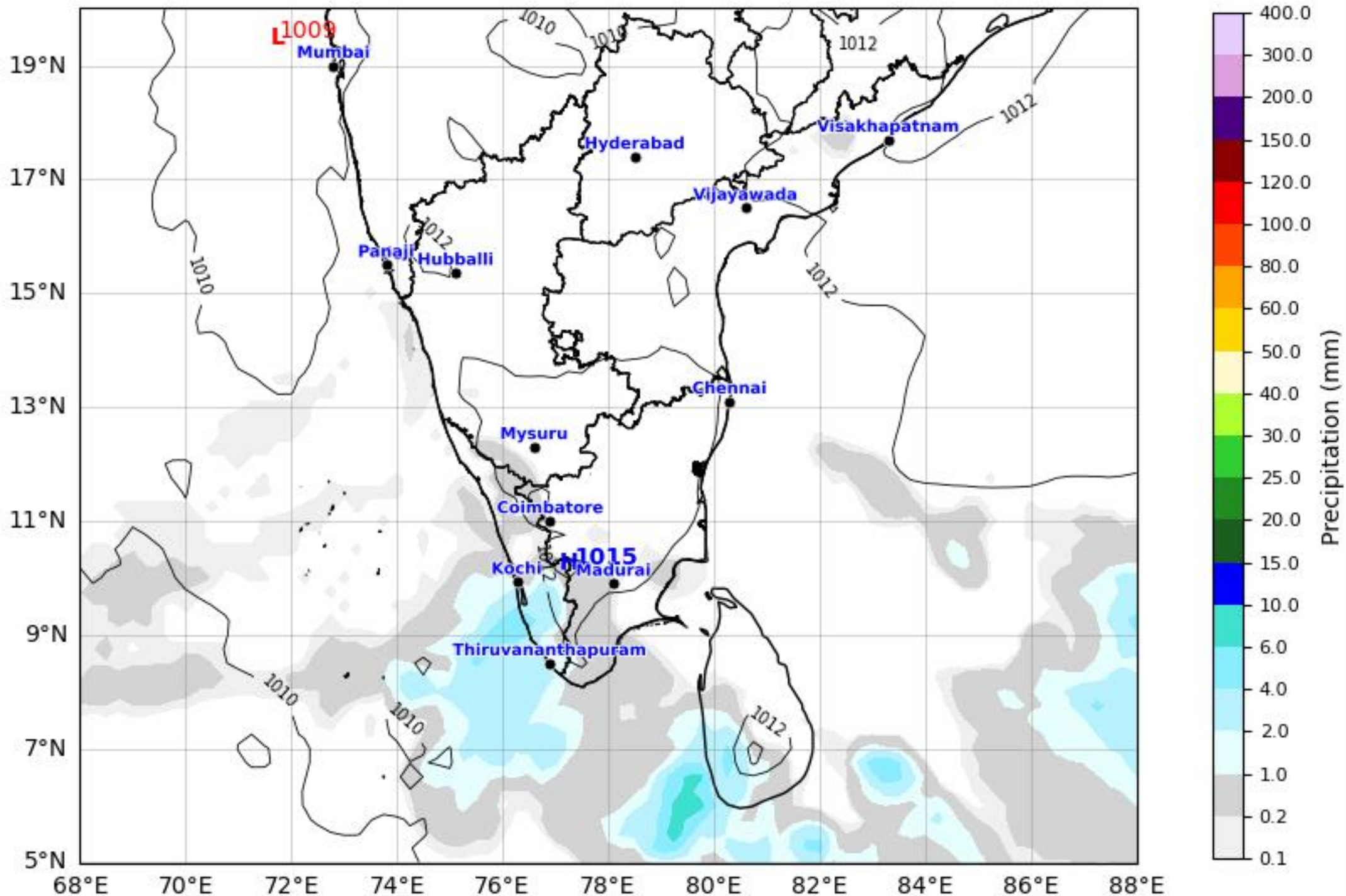
# Daily Precipitation Forecast 144 Hours South India Region



GFS run 04 Mar 2026 00Z valid for 10 Mar 2026 00Z

KOLA - South by gujaratweather.com - Data: NOMADS

KOLA: Kathiawar Ocean & Land Atmosphere - Experimental Mapping Platform



Disclaimer: The images provided by gujaratweather.com are experimental and for informational purposes only. They are not official forecasts. We do not guarantee the accuracy, timeliness, or completeness of these images, which may contain errors due to data download scripts or software limitations. For reliable weather forecasts, Please refer to official agencies such as Indian Meteorological Department or NOMADS.  
The base map shown does not represent political boundaries.



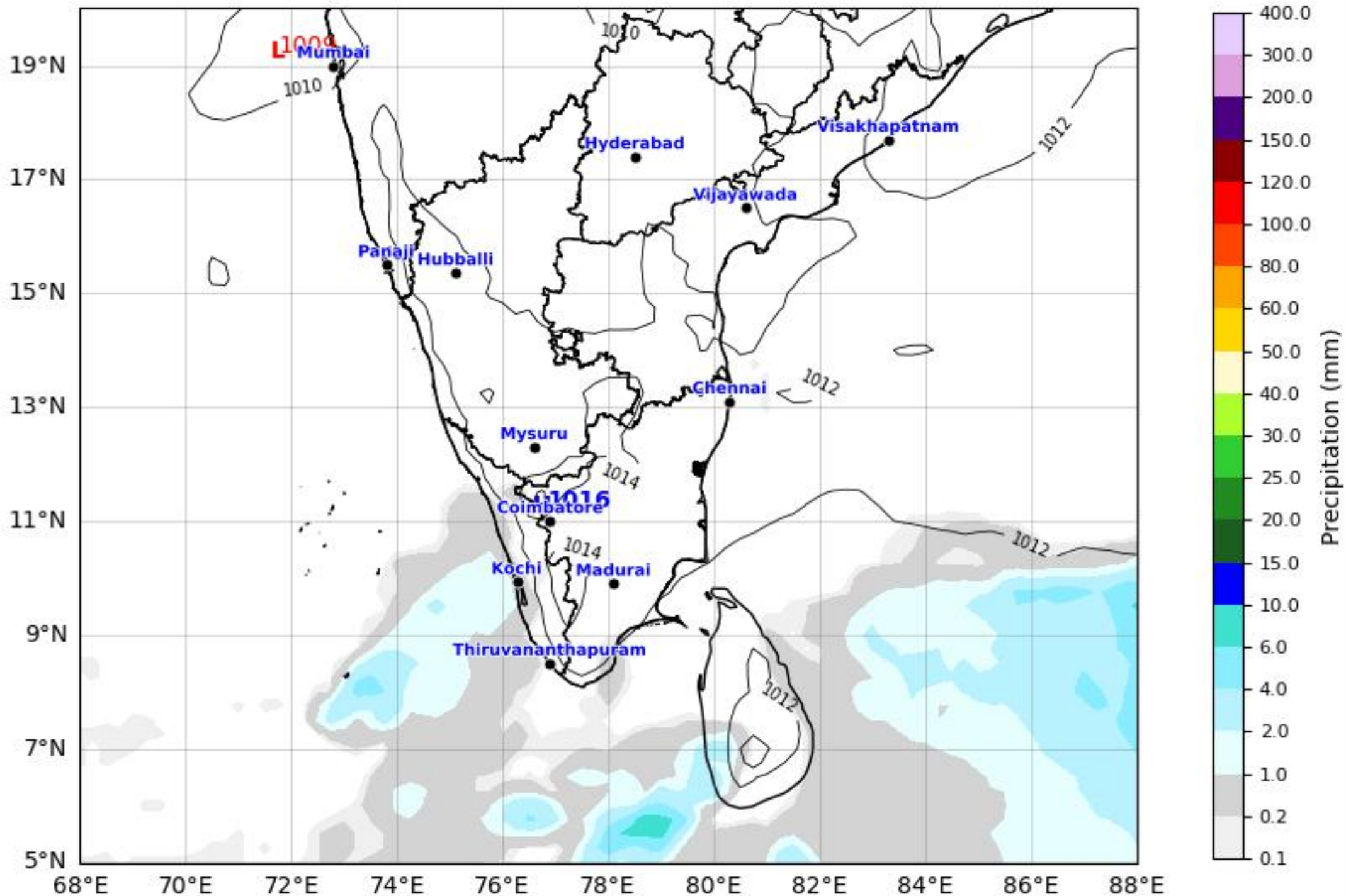
# Daily Precipitation Forecast 168 Hours South India Region



GFS run 04 Mar 2026 00Z valid for 11 Mar 2026 00Z

KOLA - South by gujaratweather.com - Data: NOMADS

KOLA: Kathiawar Ocean & Land Atmosphere - Experimental Mapping Mapping Platform



Disclaimer: The images provided by gujaratweather.com are experimental and for informational purposes only. They are not official forecasts. We do not guarantee the accuracy, timeliness, or completeness of these images, which may contain errors due to data download scripts or software limitations. For reliable weather forecasts, Please refer to official agencies such as Indian Meteorological Department or NOMADS. The base map shown does not represent political boundaries.



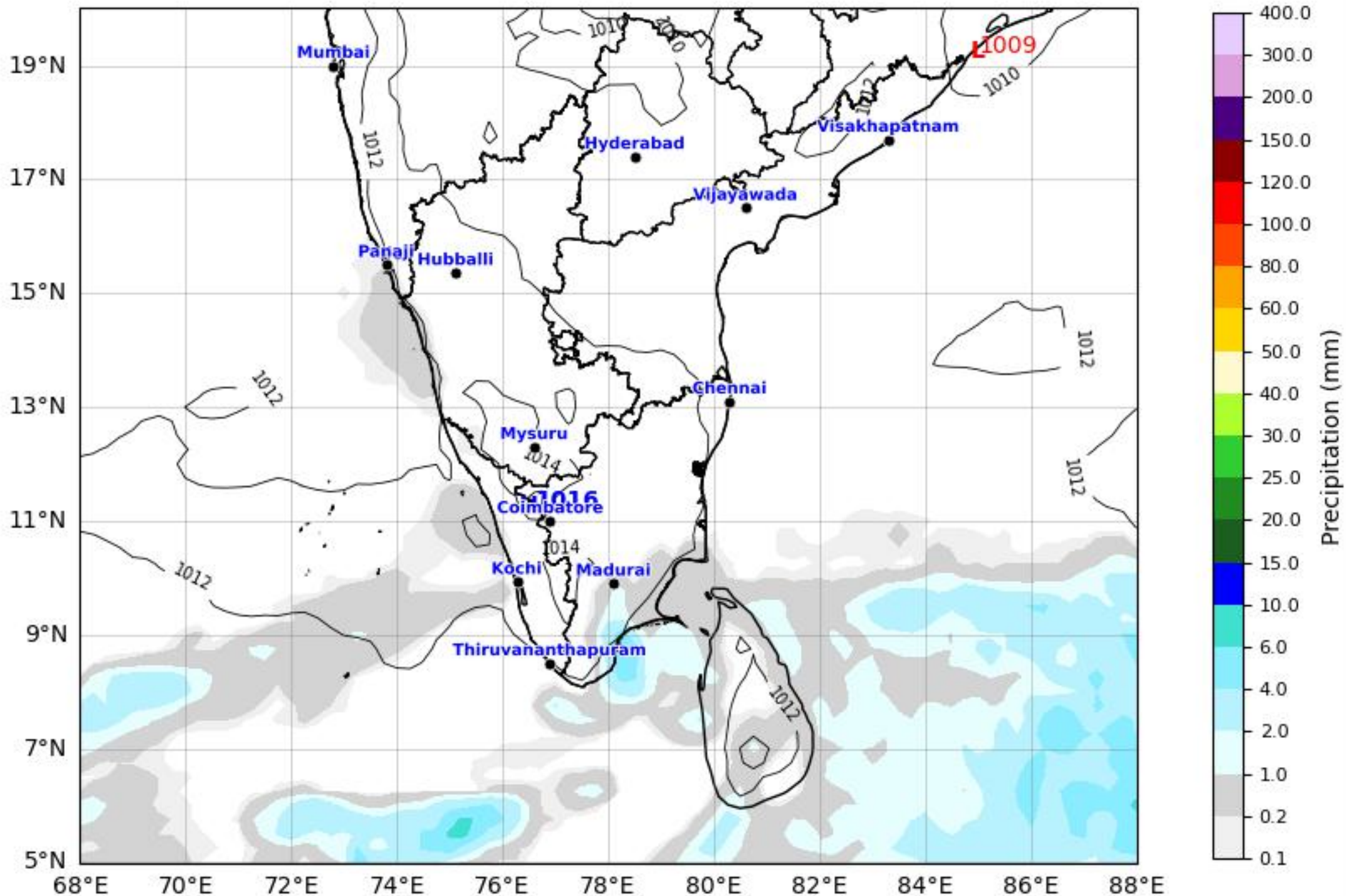
# Daily Precipitation Forecast 192 Hours South India Region



GFS run 04 Mar 2026 00Z valid for 12 Mar 2026 00Z

KOLA - South by gujaratweather.com - Data: NOMADS

KOLA: Kathiawar Ocean & Land Atmosphere - Experimental Mapping Mapping Platform



Disclaimer: The images provided by gujaratweather.com are experimental and for informational purposes only. They are not official forecasts. We do not guarantee the accuracy, timeliness, or completeness of these images, which may contain errors due to data download scripts or software limitations. For reliable weather forecasts, Please refer to official agencies such as Indian Meteorological Department or NOMADS. The base map shown does not represent political boundaries.



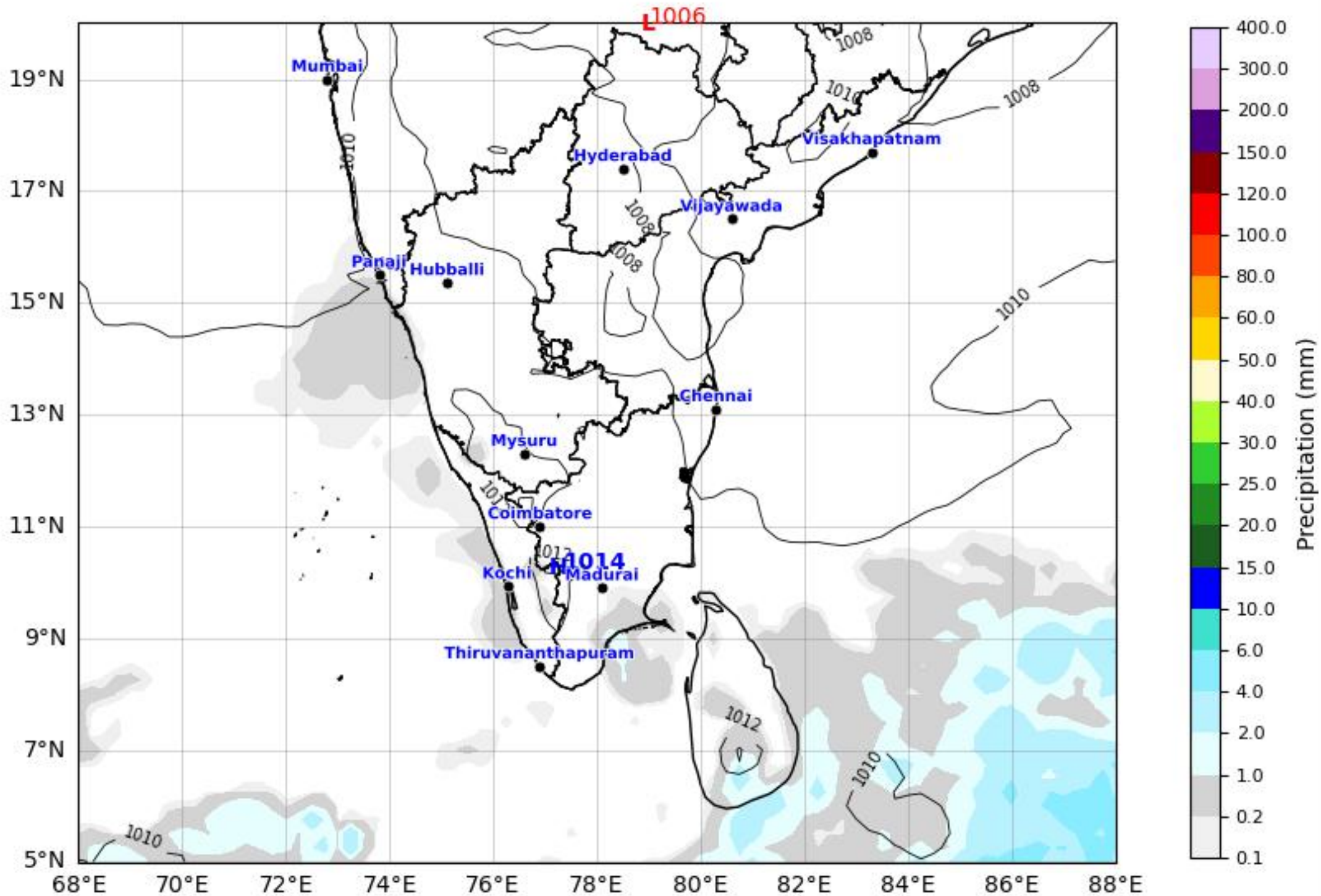
# Daily Precipitation Forecast 216 Hours South India Region



GFS run 04 Mar 2026 00Z valid for 13 Mar 2026 00Z

KOLA - South by gujaratweather.com - Data: NOMADS

KOLA: Kathiawar Ocean & Land Atmosphere - Experimental Mapping Mapping Platform



Disclaimer: The images provided by gujaratweather.com are experimental and for informational purposes only. They are not official forecasts. We do not guarantee the accuracy, timeliness, or completeness of these images, which may contain errors due to data download scripts or software limitations. For reliable weather forecasts, Please refer to official agencies such as Indian Meteorological Department or NOMADS.  
The base map shown does not represent political boundaries.



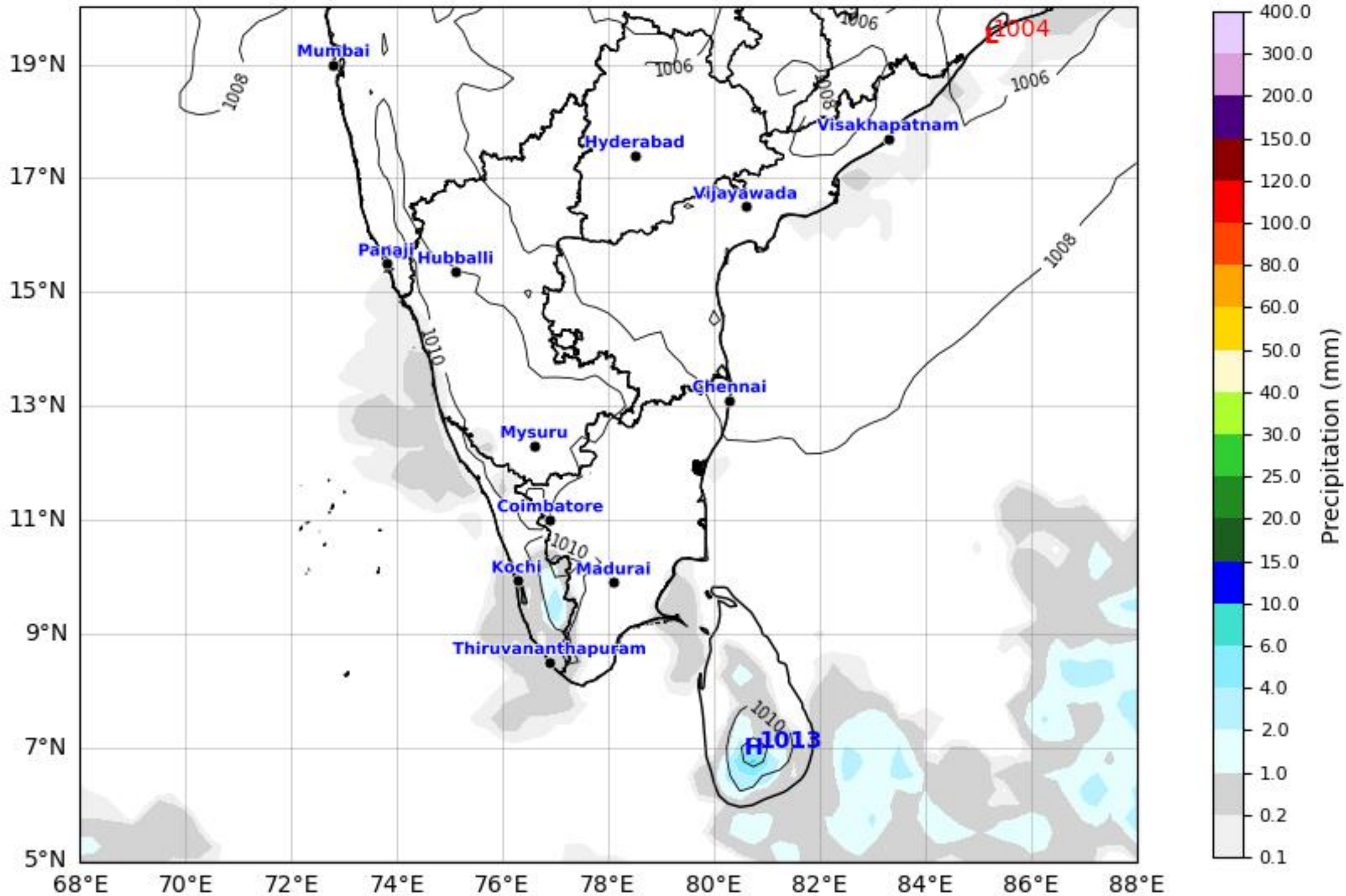
# Daily Precipitation Forecast 240 Hours South India Region



GFS run 04 Mar 2026 00Z valid for 14 Mar 2026 00Z

KOLA - South by gujaratweather.com - Data: NOMADS

KOLA: Kathiawar Ocean & Land Atmosphere - Experimental Mapping Mapping Platform



Disclaimer: The images provided by gujaratweather.com are experimental and for informational purposes only. They are not official forecasts. We do not guarantee the accuracy, timeliness, or completeness of these images, which may contain errors due to data download scripts or software limitations. For reliable weather forecasts, Please refer to official agencies such as Indian Meteorological Department or NOMADS.  
The base map shown does not represent political boundaries.

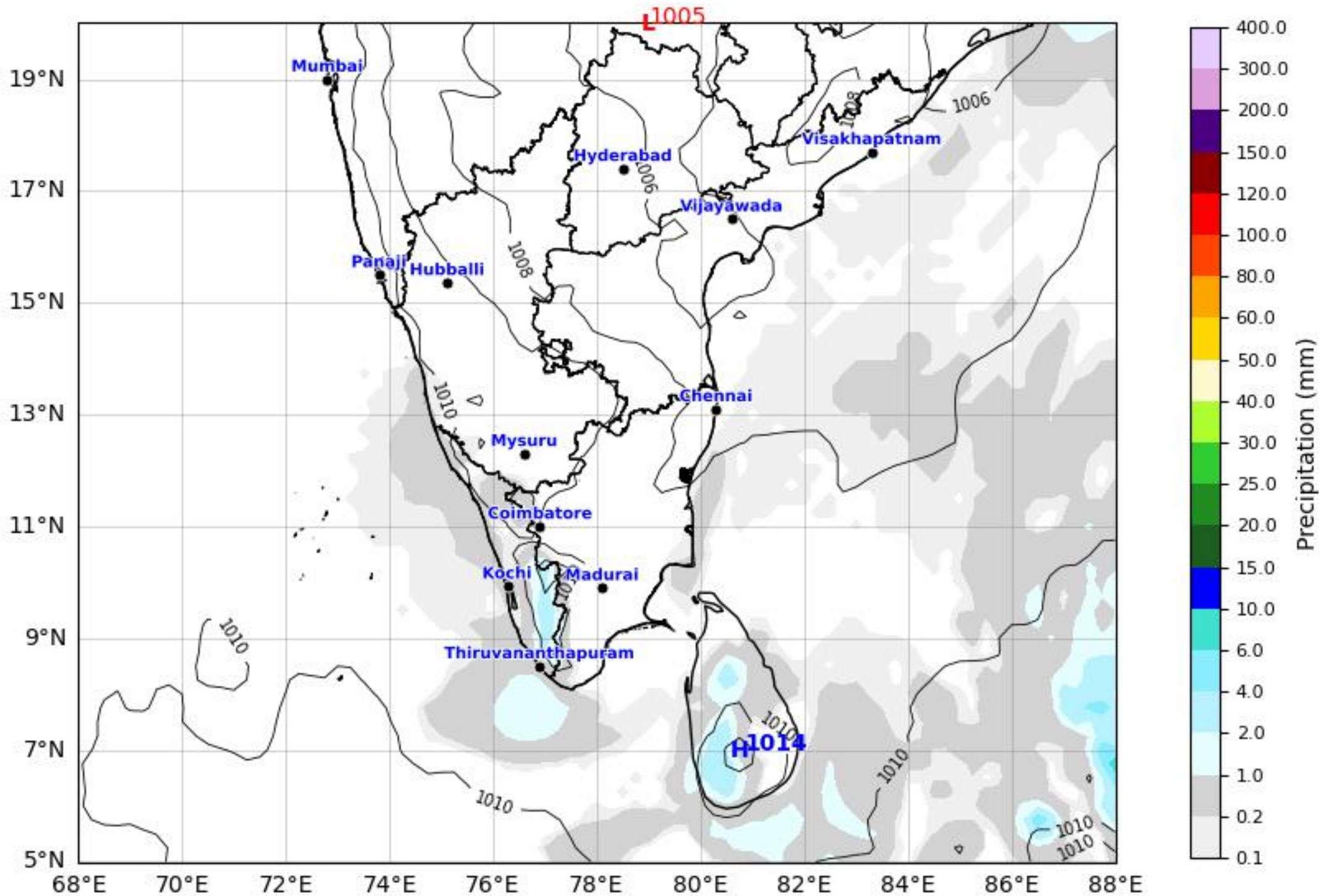


# Daily Precipitation Forecast 264 Hours South India Region



GFS run 04 Mar 2026 00Z valid for 15 Mar 2026 00Z  
KOLA - South by gujaratweather.com - Data: NOMADS

KOLA: Kathiawar Ocean & Land Atmosphere - Experimental Mapping Mapping Platform



Disclaimer: The images provided by gujaratweather.com are experimental and for informational purposes only. They are not official forecasts. We do not guarantee the accuracy, timeliness, or completeness of these images, which may contain errors due to data download scripts or software limitations. For reliable weather forecasts, Please refer to official agencies such as Indian Meteorological Department or NOMADS.  
The base map shown does not represent political boundaries.

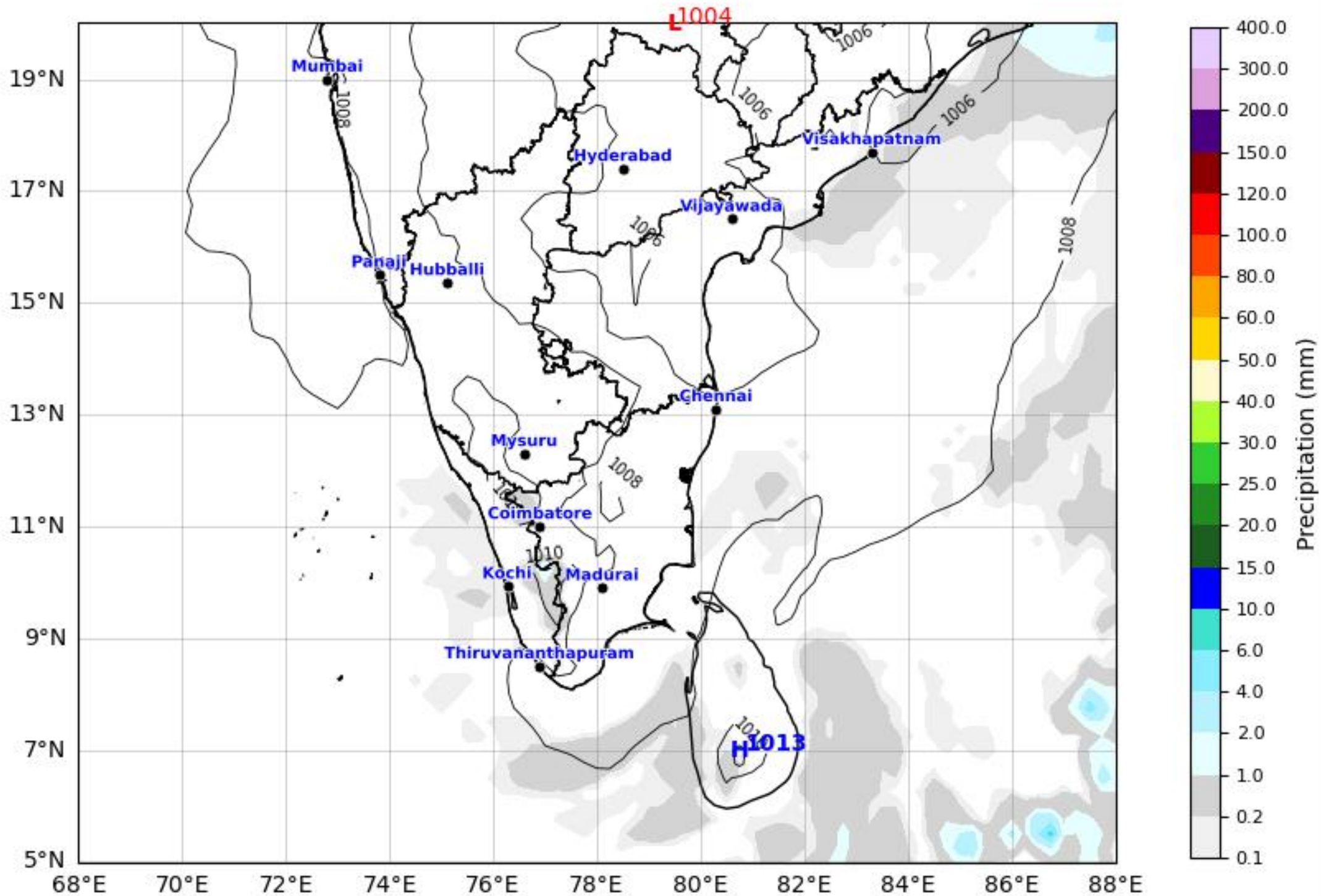


# Daily Precipitation Forecast 288 Hours South India Region



GFS run 04 Mar 2026 00Z valid for 16 Mar 2026 00Z  
KOLA - South by gujaratweather.com - Data: NOMADS

KOLA: Kathiawar Ocean & Land Atmosphere - Experimental Mapping Mapping Platform



Disclaimer: The images provided by gujaratweather.com are experimental and for informational purposes only. They are not official forecasts. We do not guarantee the accuracy, timeliness, or completeness of these images, which may contain errors due to data download scripts or software limitations. For reliable weather forecasts, Please refer to official agencies such as Indian Meteorological Department or NOMADS.  
The base map shown does not represent political boundaries.

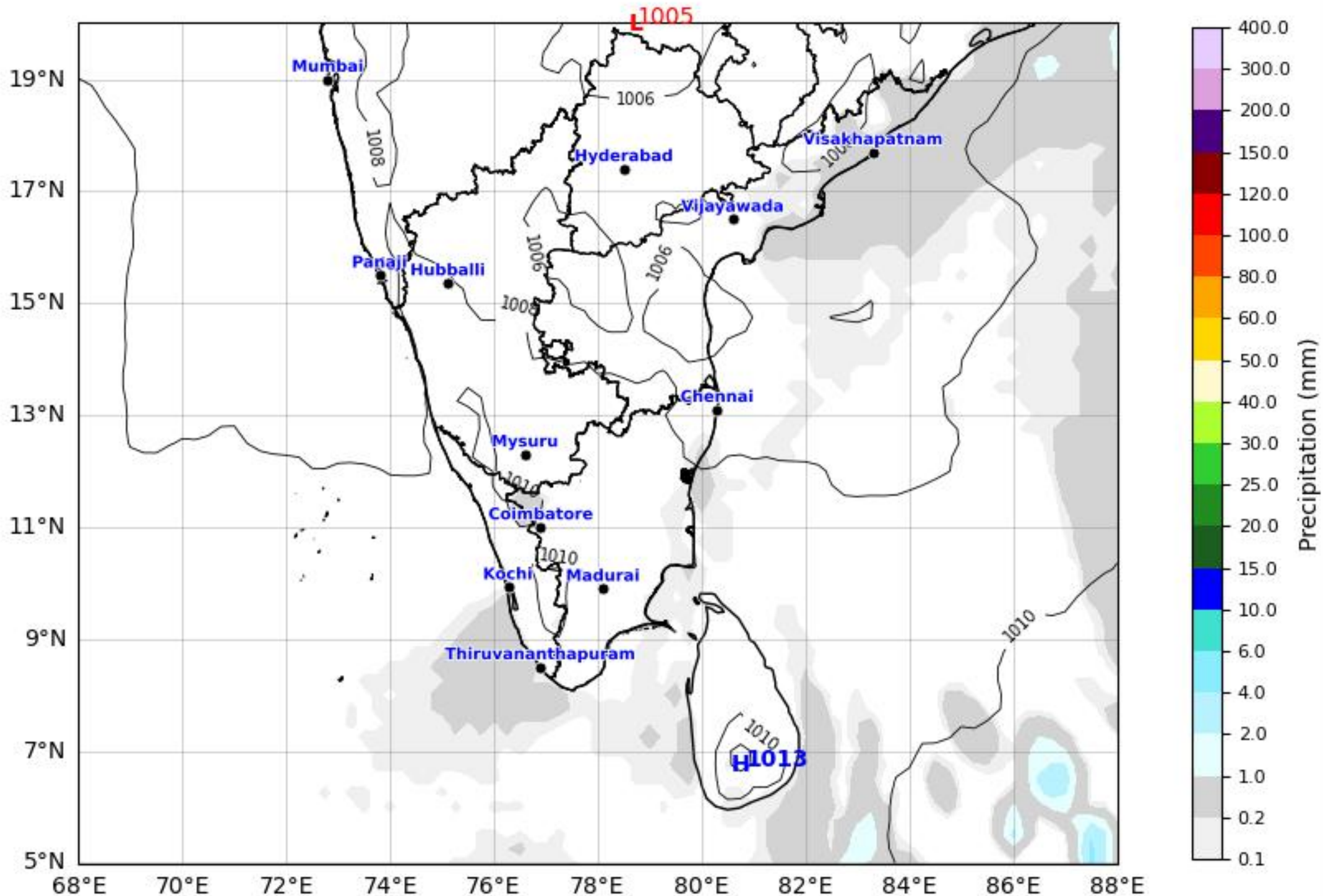


# Daily Precipitation Forecast 312 Hours South India Region



GFS run 04 Mar 2026 00Z valid for 17 Mar 2026 00Z  
KOLA - South by gujaratweather.com - Data: NOMADS

KOLA: Kathiawar Ocean & Land Atmosphere - Experimental Mapping Mapping Platform



Disclaimer: The images provided by gujaratweather.com are experimental and for informational purposes only. They are not official forecasts. We do not guarantee the accuracy, timeliness, or completeness of these images, which may contain errors due to data download scripts or software limitations. For reliable weather forecasts, Please refer to official agencies such as Indian Meteorological Department or NOMADS.  
The base map shown does not represent political boundaries.



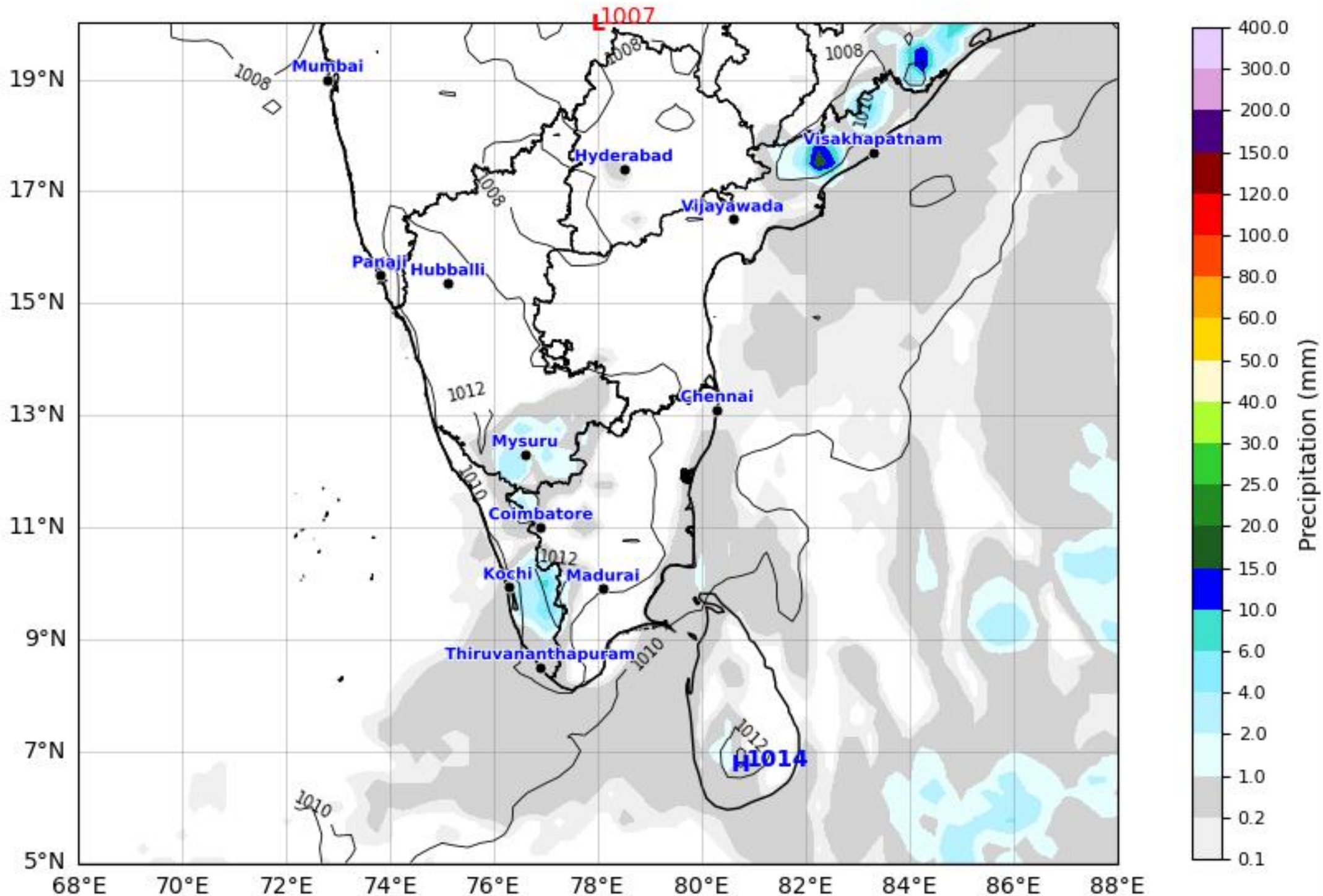
# Daily Precipitation Forecast 336 Hours South India Region



GFS run 04 Mar 2026 00Z valid for 18 Mar 2026 00Z

KOLA - South by gujaratweather.com - Data: NOMADS

KOLA: Kathiawar Ocean & Land Atmosphere - Experimental Mapping Mapping Platform



Disclaimer: The images provided by gujaratweather.com are experimental and for informational purposes only. They are not official forecasts. We do not guarantee the accuracy, timeliness, or completeness of these images, which may contain errors due to data download scripts or software limitations. For reliable weather forecasts, Please refer to official agencies such as Indian Meteorological Department or NOMADS.  
The base map shown does not represent political boundaries.

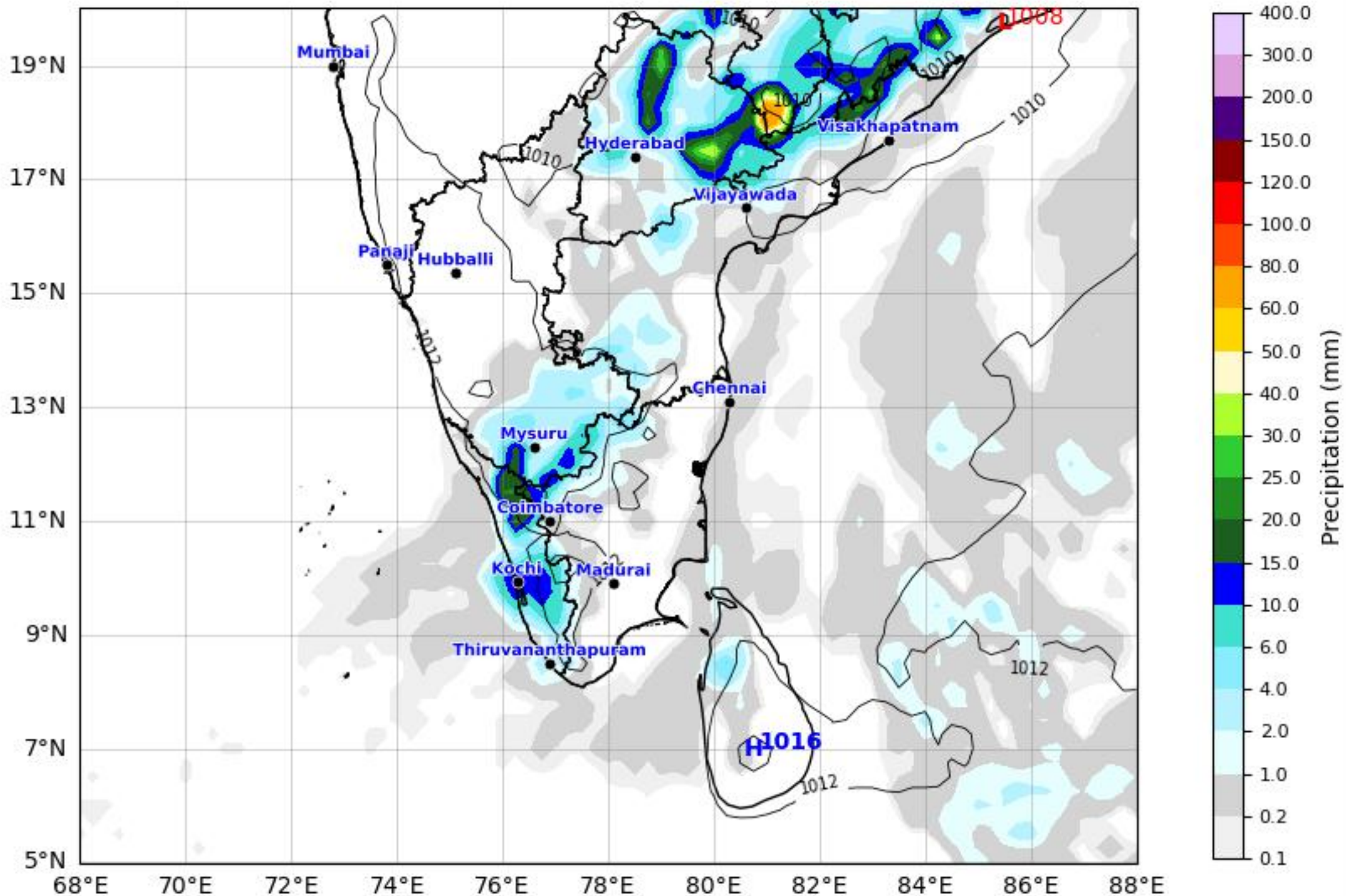


# Daily Precipitation Forecast 360 Hours South India Region



GFS run 04 Mar 2026 00Z valid for 19 Mar 2026 00Z  
KOLA - South by gujaratweather.com - Data: NOMADS

KOLA: Kathiawar Ocean & Land Atmosphere - Experimental Mapping Platform



Disclaimer: The images provided by gujaratweather.com are experimental and for informational purposes only. They are not official forecasts. We do not guarantee the accuracy, timeliness, or completeness of these images, which may contain errors due to data download scripts or software limitations. For reliable weather forecasts, Please refer to official agencies such as Indian Meteorological Department or NOMADS. The base map shown does not represent political boundaries.



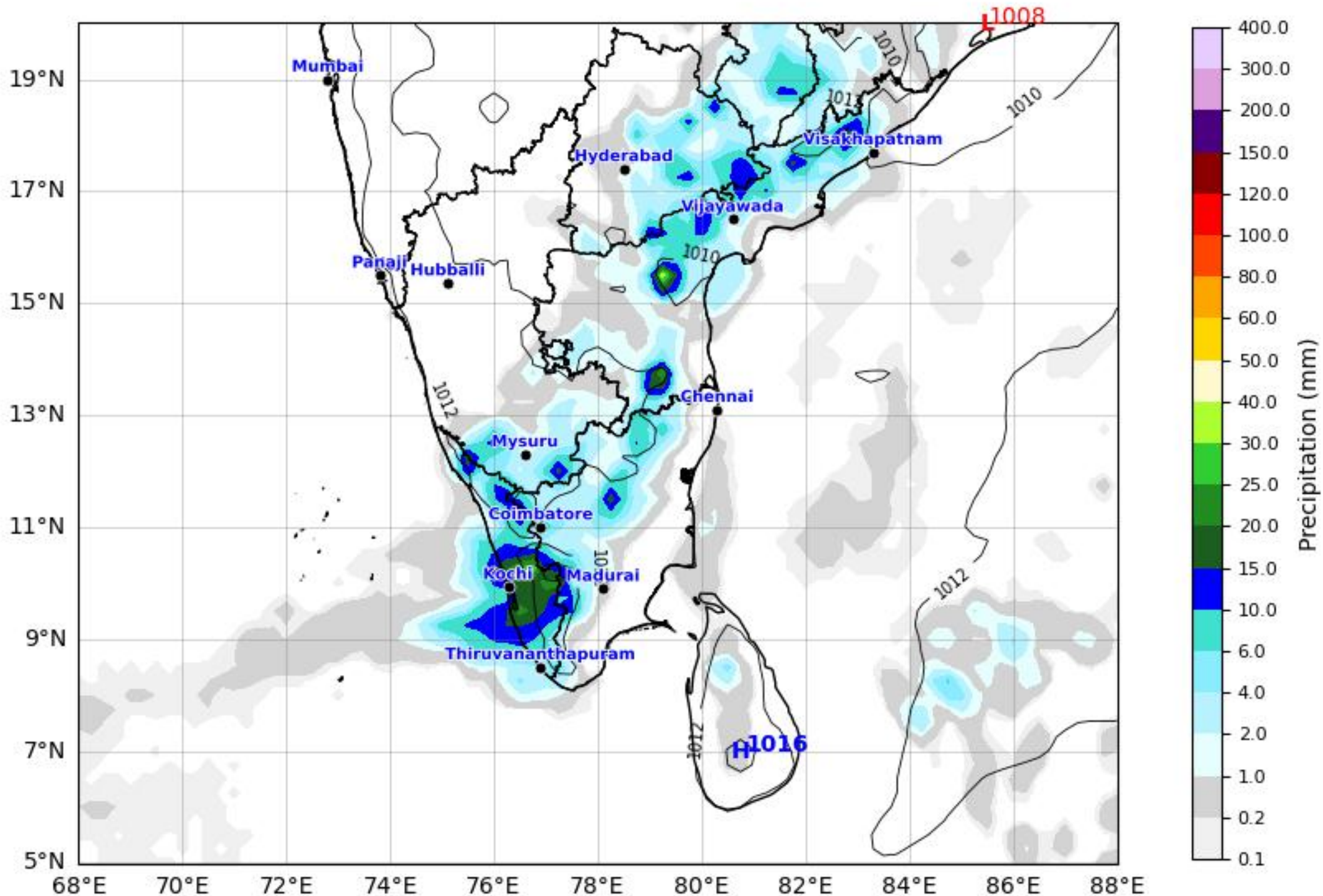
# Daily Precipitation Forecast 384 Hours South India Region



GFS run 04 Mar 2026 00Z valid for 20 Mar 2026 00Z

KOLA - South by gujaratweather.com - Data: NOMADS

KOLA: Kathiawar Ocean & Land Atmosphere - Experimental Mapping Platform



Disclaimer: The images provided by gujaratweather.com are experimental and for informational purposes only. They are not official forecasts. We do not guarantee the accuracy, timeliness, or completeness of these images, which may contain errors due to data download scripts or software limitations. For reliable weather forecasts, Please refer to official agencies such as Indian Meteorological Department or NOMADS. The base map shown does not represent political boundaries.