



# MSL Analysis Map

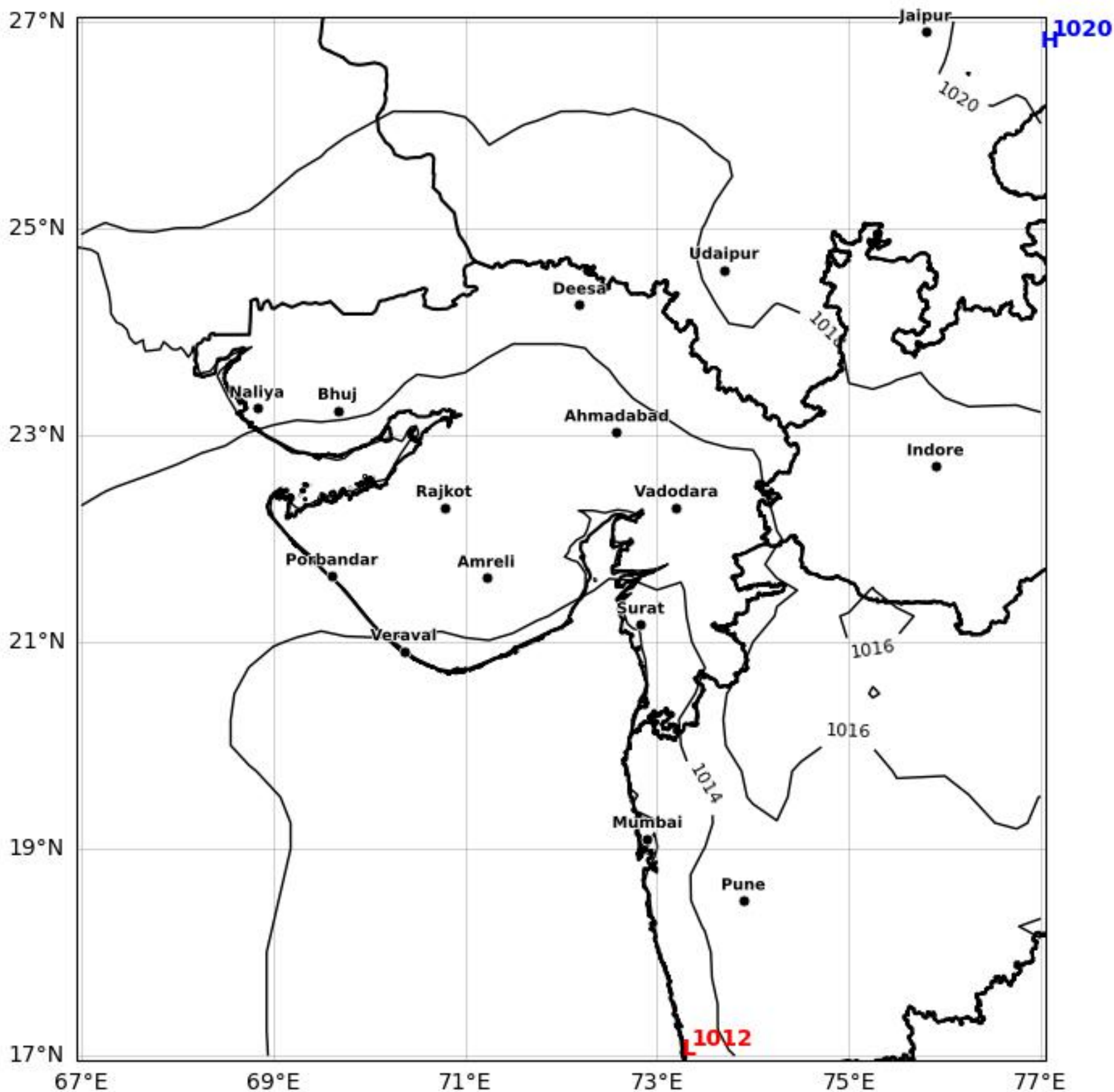
## Gujarat & Surrounding Region

Based on 30 Jan 2026 00Z

KOLA - West by gujaratweather.com - Data: ECMWF



KOLA: Kathiawar Ocean & Land Atmosphere - Experimental Weather Mapping Platform



Disclaimer: The images provided by gujaratweather.com are experimental and for informational purposes only. They are not official forecasts. We do not guarantee the accuracy, timeliness, or completeness of these images, which may contain errors due to data download scripts or software limitations. For reliable weather forecasts, Please refer to official agencies such as Indian Meteorological Department or ECMWF. The base map shown does not represent political boundaries.



# Daily Precipitation Forecast (24 HR)

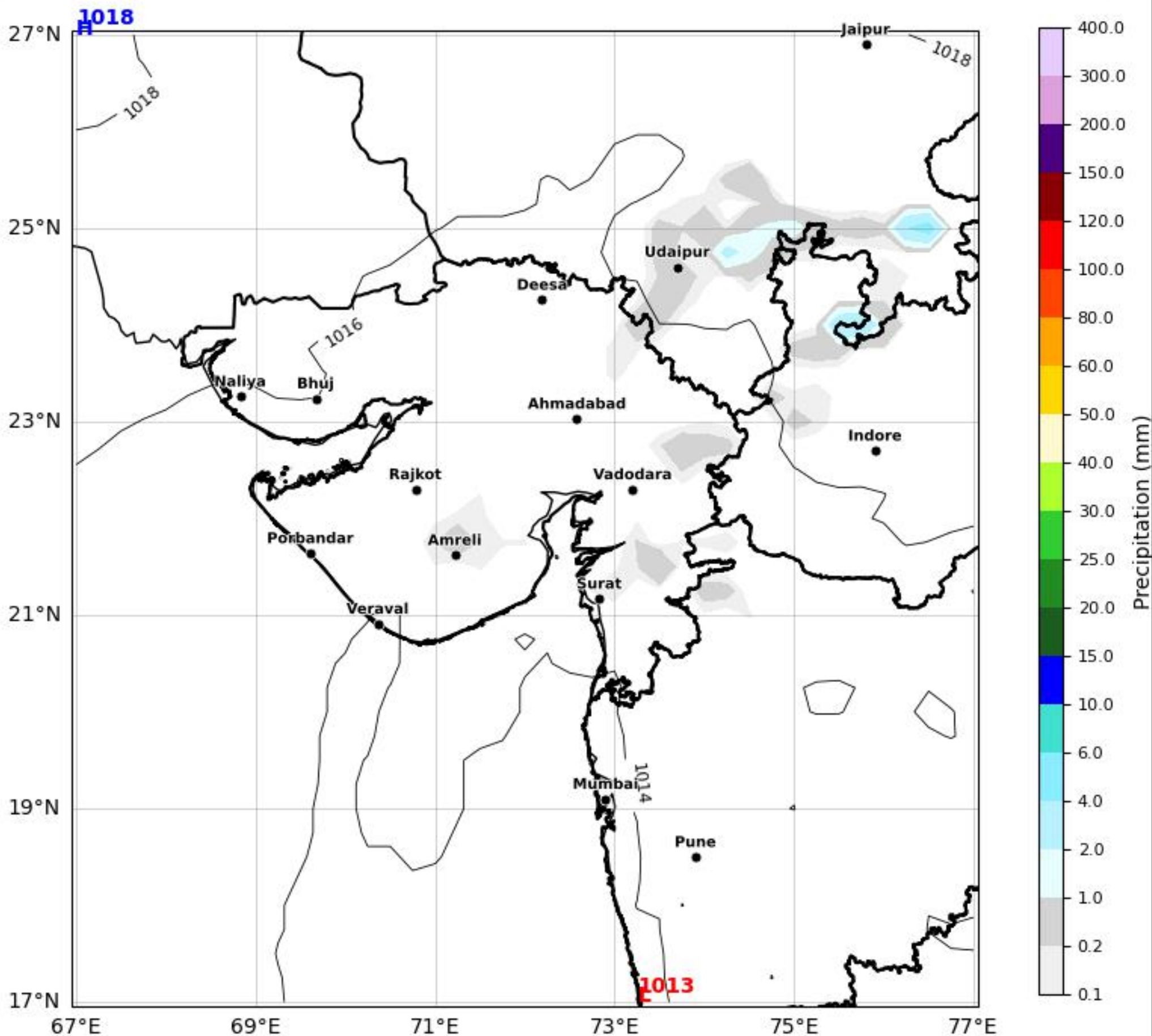
## Gujarat & Surrounding Region

Based on 30 Jan 2026 00Z valid for 31 Jan 2026 00Z

KOLA - West by gujaratweather.com - Data: ECMWF



KOLA: Kathiawar Ocean & Land Atmosphere - Experimental Weather Mapping Platform



Disclaimer: The images provided by gujaratweather.com are experimental and for informational purposes only. They are not official forecasts. We do not guarantee the accuracy, timeliness, or completeness of these images, which may contain errors due to data download scripts or software limitations. For reliable weather forecasts, Please refer to official agencies such as Indian Meteorological Department or ECMWF. The base map shown does not represent political boundaries.





# Daily Precipitation Forecast (48 HR)

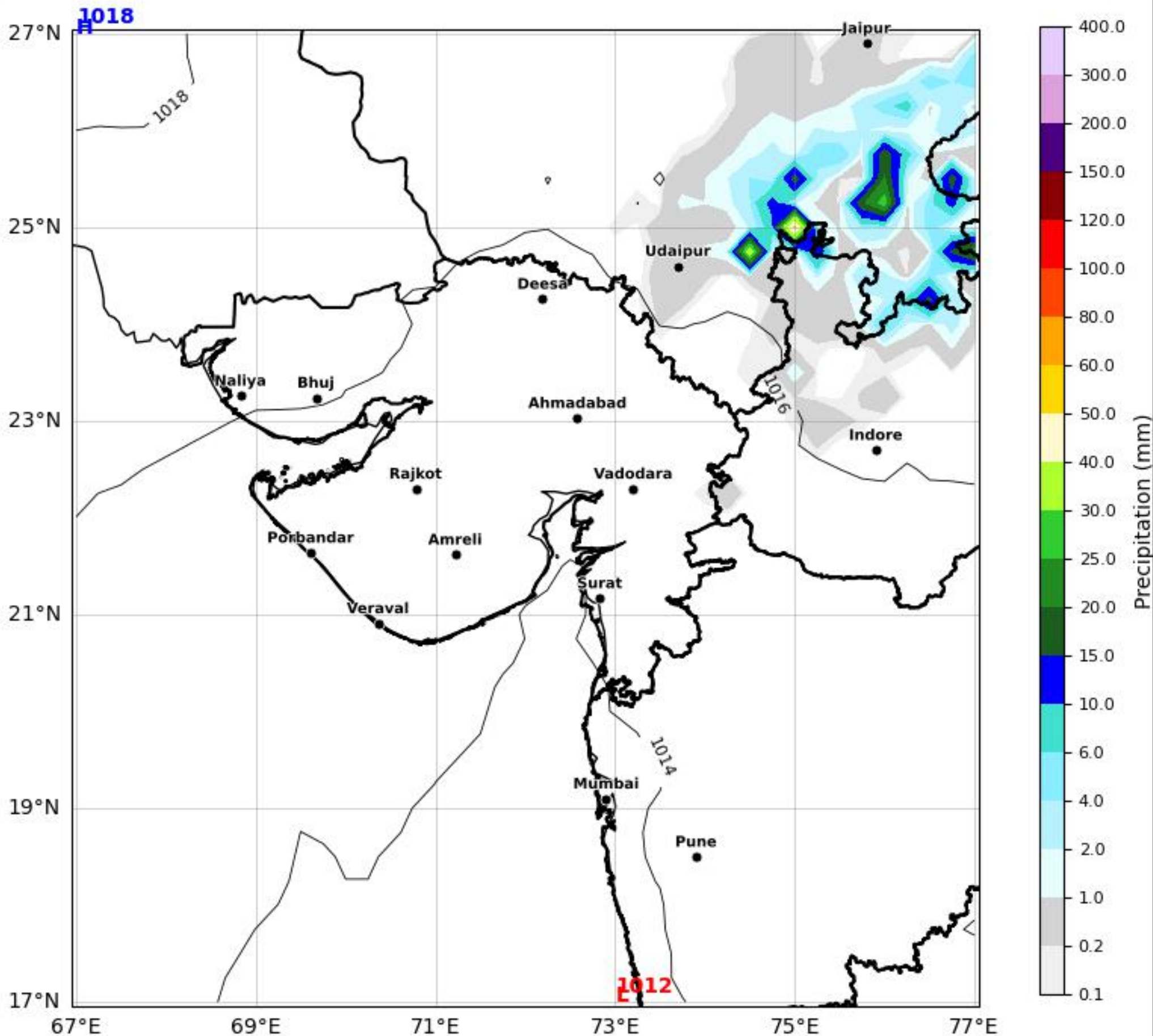
## Gujarat & Surrounding Region

Based on 30 Jan 2026 00Z valid for 01 Feb 2026 00Z

KOLA - West by gujaratweather.com - Data: ECMWF



KOLA: Kathiawar Ocean & Land Atmosphere - Experimental Weather Mapping Platform



Disclaimer: The images provided by gujaratweather.com are experimental and for informational purposes only. They are not official forecasts. We do not guarantee the accuracy, timeliness, or completeness of these images, which may contain errors due to data download scripts or software limitations. For reliable weather forecasts, Please refer to official agencies such as Indian Meteorological Department or ECMWF. The base map shown does not represent political boundaries.



# Daily Precipitation Forecast (72 HR)

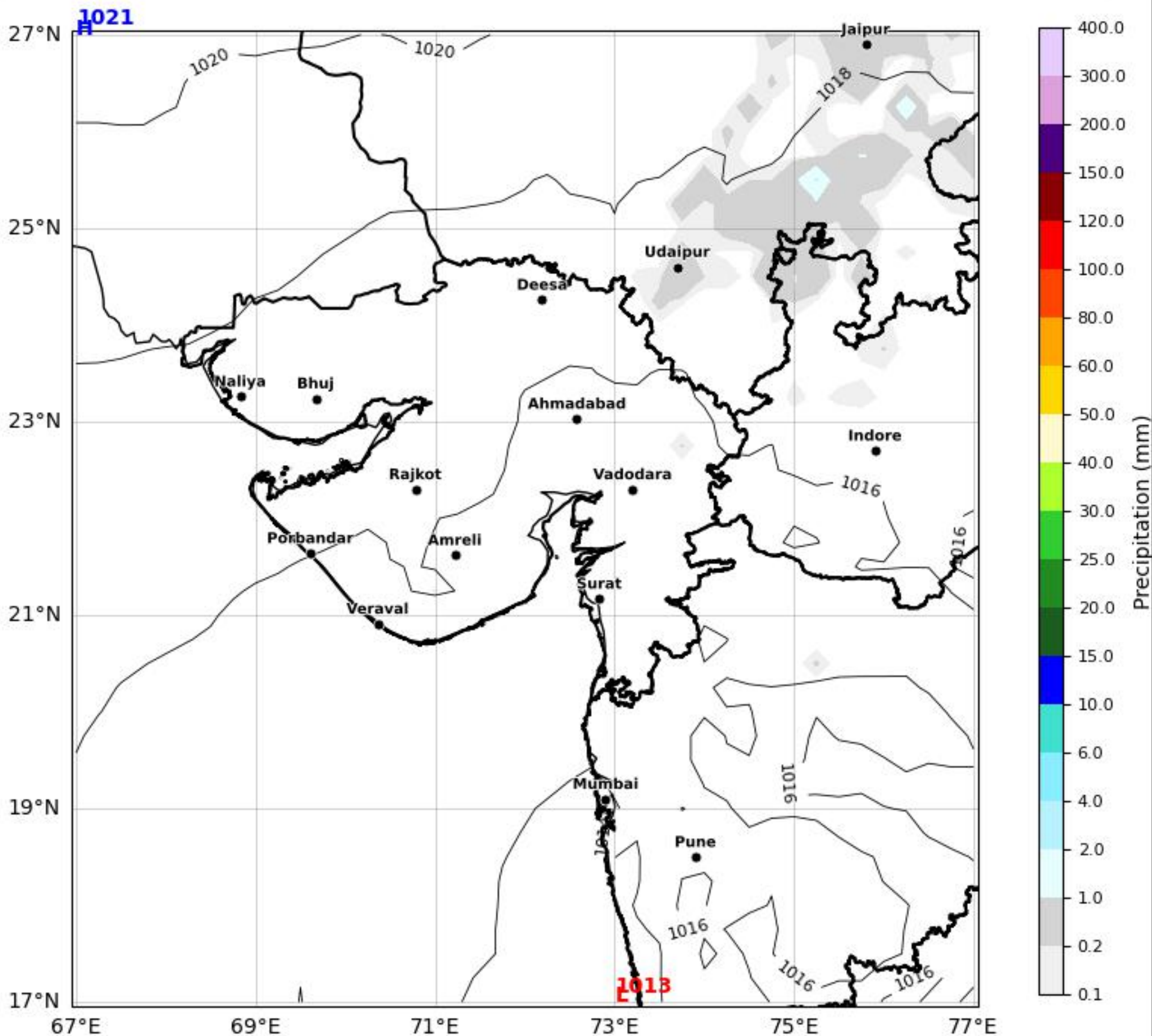
## Gujarat & Surrounding Region

Based on 30 Jan 2026 00Z valid for 02 Feb 2026 00Z

KOLA - West by gujaratweather.com - Data: ECMWF



KOLA: Kathiawar Ocean & Land Atmosphere - Experimental Weather Mapping Platform



Disclaimer: The images provided by gujaratweather.com are experimental and for informational purposes only. They are not official forecasts. We do not guarantee the accuracy, timeliness, or completeness of these images, which may contain errors due to data download scripts or software limitations. For reliable weather forecasts, Please refer to official agencies such as Indian Meteorological Department or ECMWF. The base map shown does not represent political boundaries.





# Daily Precipitation Forecast (96 HR)

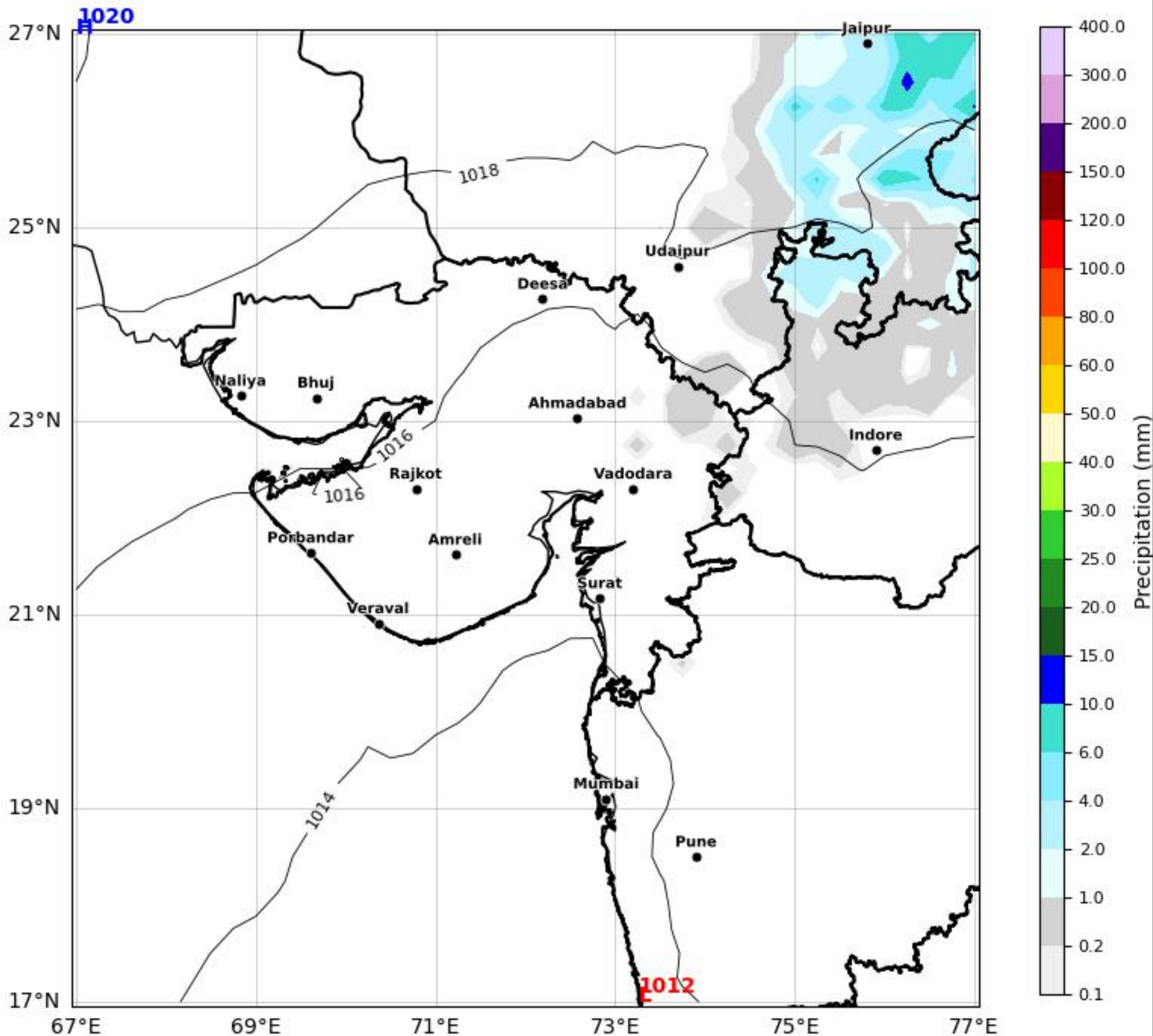
## Gujarat & Surrounding Region

Based on 30 Jan 2026 00Z valid for 03 Feb 2026 00Z

KOLA - West by gujaratweather.com - Data: ECMWF



KOLA: Kathiawar Ocean & Land Atmosphere - Experimental Weather Mapping Platform



Disclaimer: The images provided by gujaratweather.com are experimental and for informational purposes only. They are not official forecasts. We do not guarantee the accuracy, timeliness, or completeness of these images, which may contain errors due to data download scripts or software limitations. For reliable weather forecasts, Please refer to official agencies such as Indian Meteorological Department or ECMWF. The base map shown does not represent political boundaries.



# Daily Precipitation Forecast (120 HR)

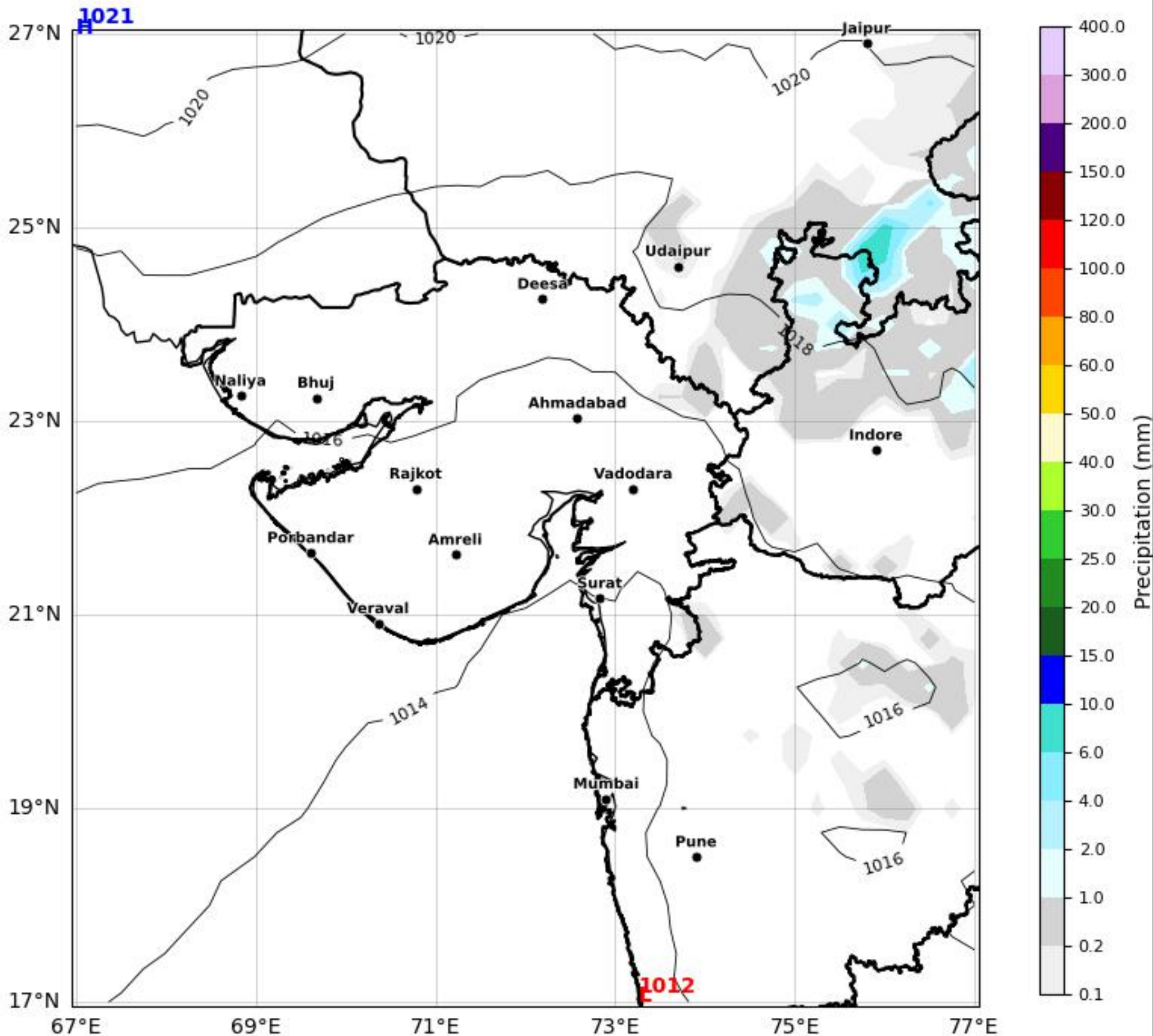
## Gujarat & Surrounding Region

Based on 30 Jan 2026 00Z valid for 04 Feb 2026 00Z

KOLA - West by gujaratweather.com - Data: ECMWF



KOLA: Kathiawar Ocean & Land Atmosphere - Experimental Weather Mapping Platform



Disclaimer: The images provided by gujaratweather.com are experimental and for informational purposes only. They are not official forecasts. We do not guarantee the accuracy, timeliness, or completeness of these images, which may contain errors due to data download scripts or software limitations. For reliable weather forecasts, Please refer to official agencies such as Indian Meteorological Department or ECMWF. The base map shown does not represent political boundaries.





# Daily Precipitation Forecast (144 HR)

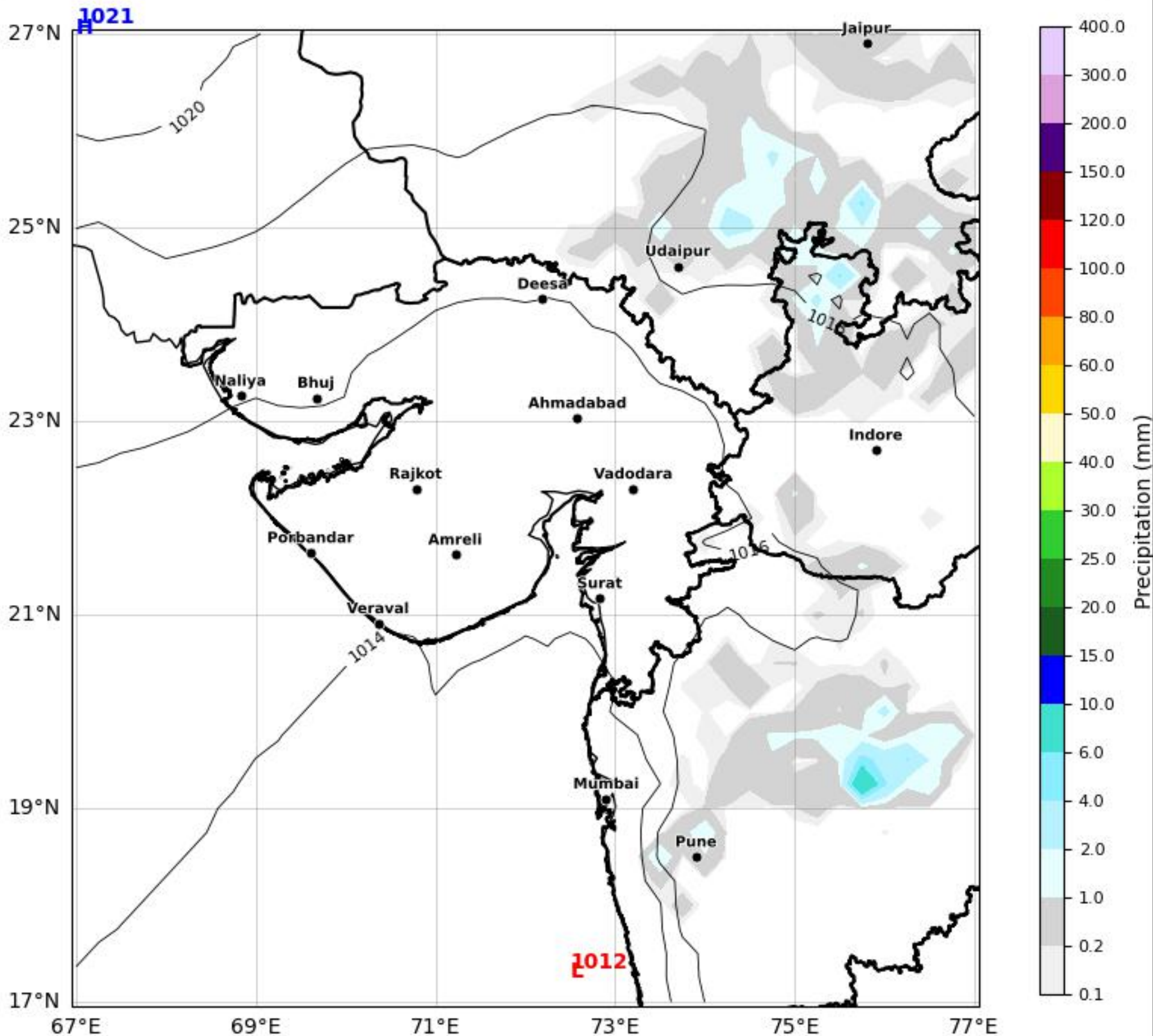
## Gujarat & Surrounding Region

Based on 30 Jan 2026 00Z valid for 05 Feb 2026 00Z

KOLA - West by gujaratweather.com - Data: ECMWF



KOLA: Kathiawar Ocean & Land Atmosphere - Experimental Weather Mapping Platform



Disclaimer: The images provided by gujaratweather.com are experimental and for informational purposes only. They are not official forecasts. We do not guarantee the accuracy, timeliness, or completeness of these images, which may contain errors due to data download scripts or software limitations. For reliable weather forecasts, Please refer to official agencies such as Indian Meteorological Department or ECMWF. The base map shown does not represent political boundaries.



# Daily Precipitation Forecast (168 HR)

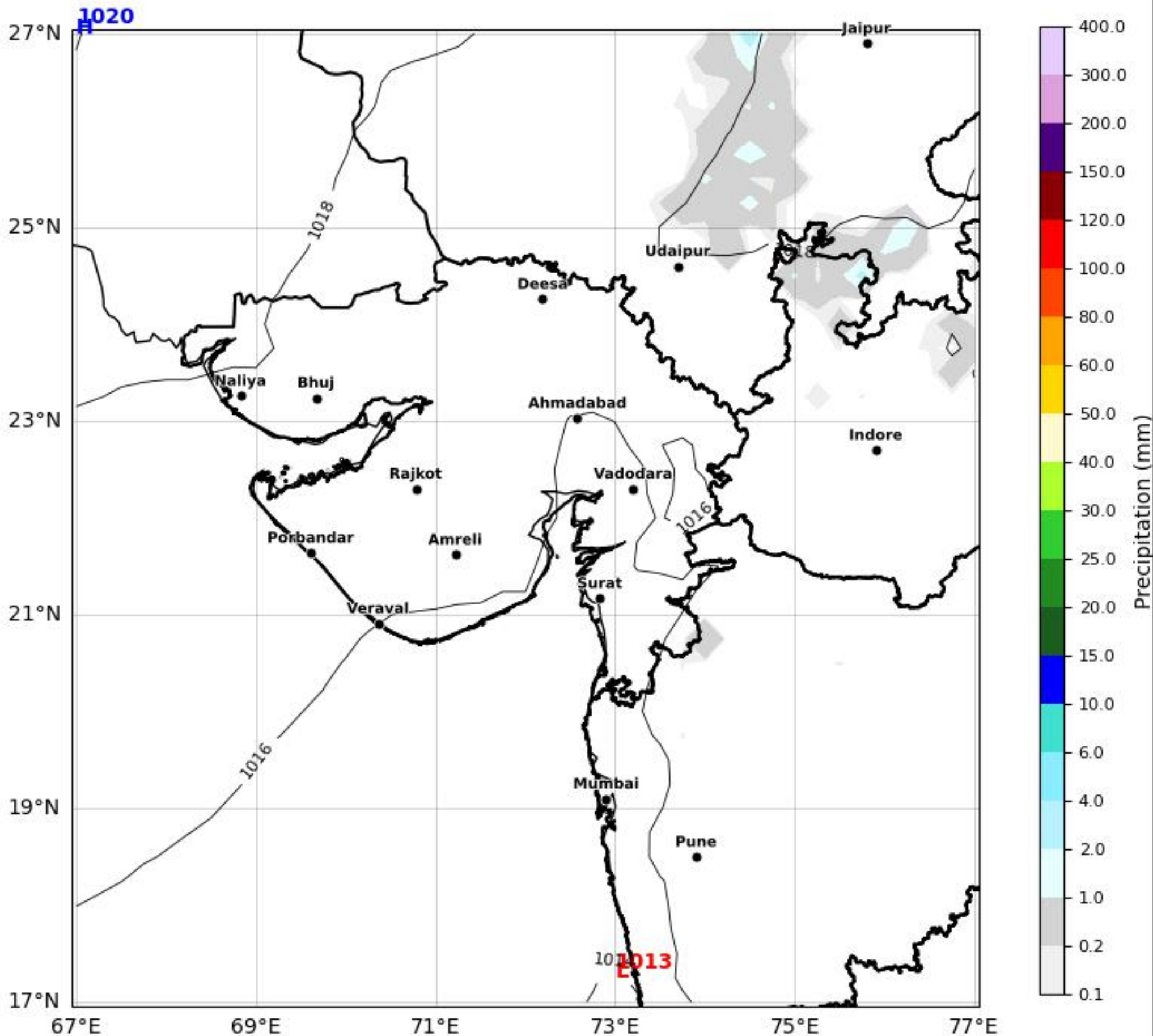
## Gujarat & Surrounding Region

Based on 30 Jan 2026 00Z valid for 06 Feb 2026 00Z

KOLA - West by gujaratweather.com - Data: ECMWF



KOLA: Kathiawar Ocean & Land Atmosphere - Experimental Weather Mapping Platform



Disclaimer: The images provided by gujaratweather.com are experimental and for informational purposes only. They are not official forecasts. We do not guarantee the accuracy, timeliness, or completeness of these images, which may contain errors due to data download scripts or software limitations. For reliable weather forecasts, Please refer to official agencies such as Indian Meteorological Department or ECMWF. The base map shown does not represent political boundaries.





# Daily Precipitation Forecast (192 HR)

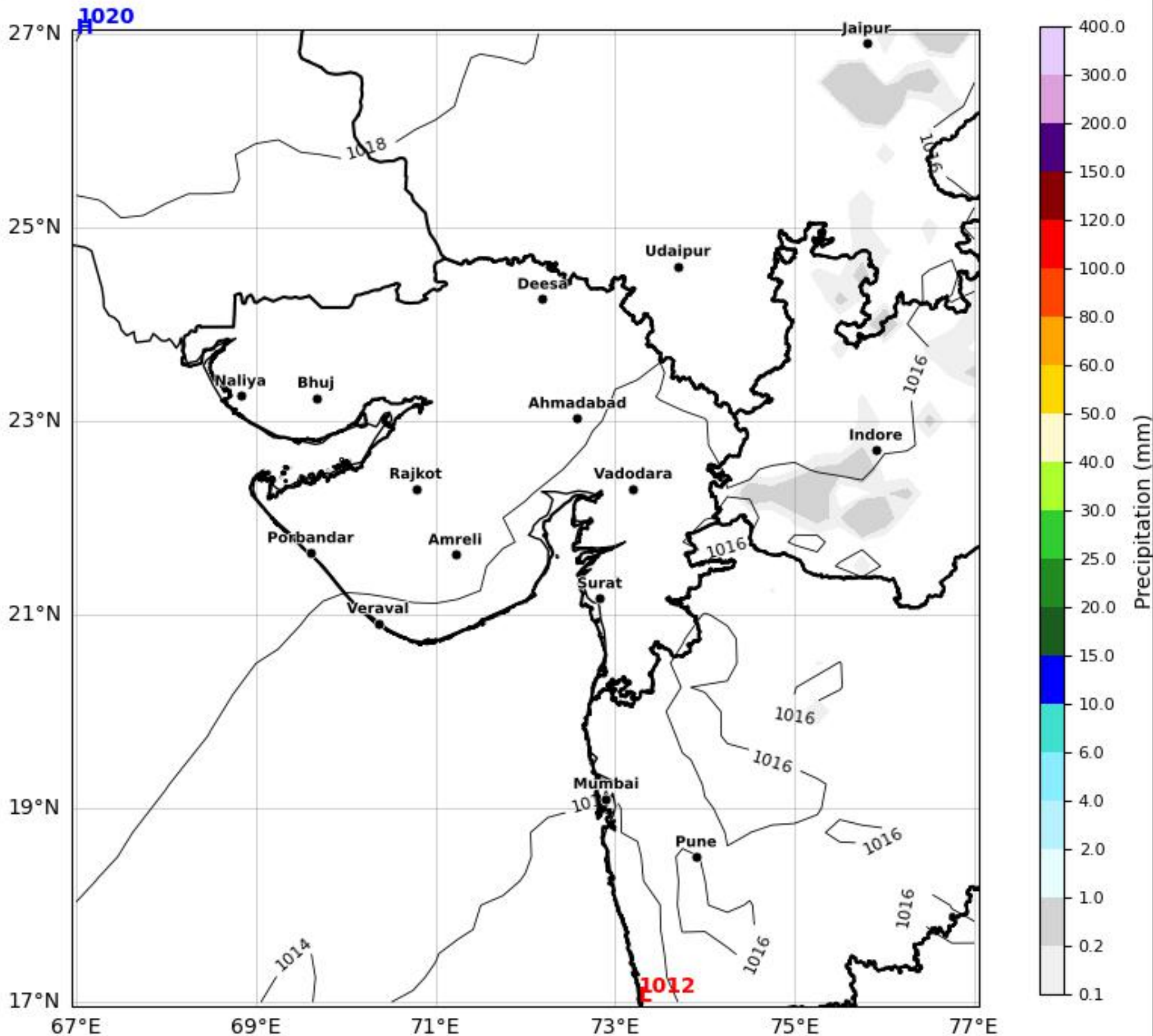
## Gujarat & Surrounding Region

Based on 30 Jan 2026 00Z valid for 07 Feb 2026 00Z

KOLA - West by gujaratweather.com - Data: ECMWF



KOLA: Kathiawar Ocean & Land Atmosphere - Experimental Weather Mapping Platform



Disclaimer: The images provided by gujaratweather.com are experimental and for informational purposes only. They are not official forecasts. We do not guarantee the accuracy, timeliness, or completeness of these images, which may contain errors due to data download scripts or software limitations. For reliable weather forecasts, Please refer to official agencies such as Indian Meteorological Department or ECMWF. The base map shown does not represent political boundaries.



# Daily Precipitation Forecast (216 HR)

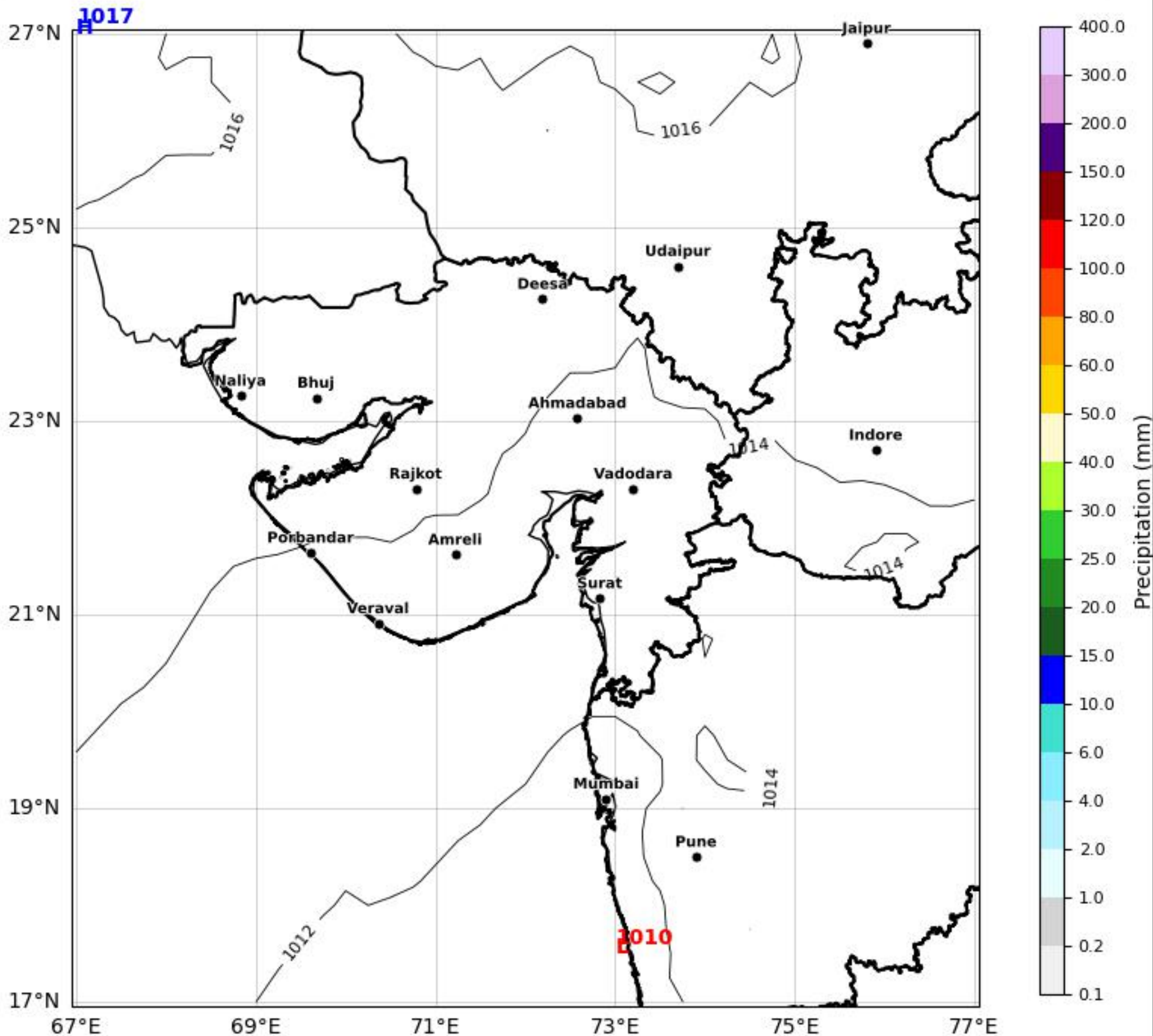
## Gujarat & Surrounding Region

Based on 30 Jan 2026 00Z valid for 08 Feb 2026 00Z

KOLA - West by gujaratweather.com - Data: ECMWF



KOLA: Kathiawar Ocean & Land Atmosphere - Experimental Weather Mapping Platform



Disclaimer: The images provided by gujaratweather.com are experimental and for informational purposes only. They are not official forecasts. We do not guarantee the accuracy, timeliness, or completeness of these images, which may contain errors due to data download scripts or software limitations. For reliable weather forecasts, Please refer to official agencies such as Indian Meteorological Department or ECMWF. The base map shown does not represent political boundaries.





# Daily Precipitation Forecast (240 HR)

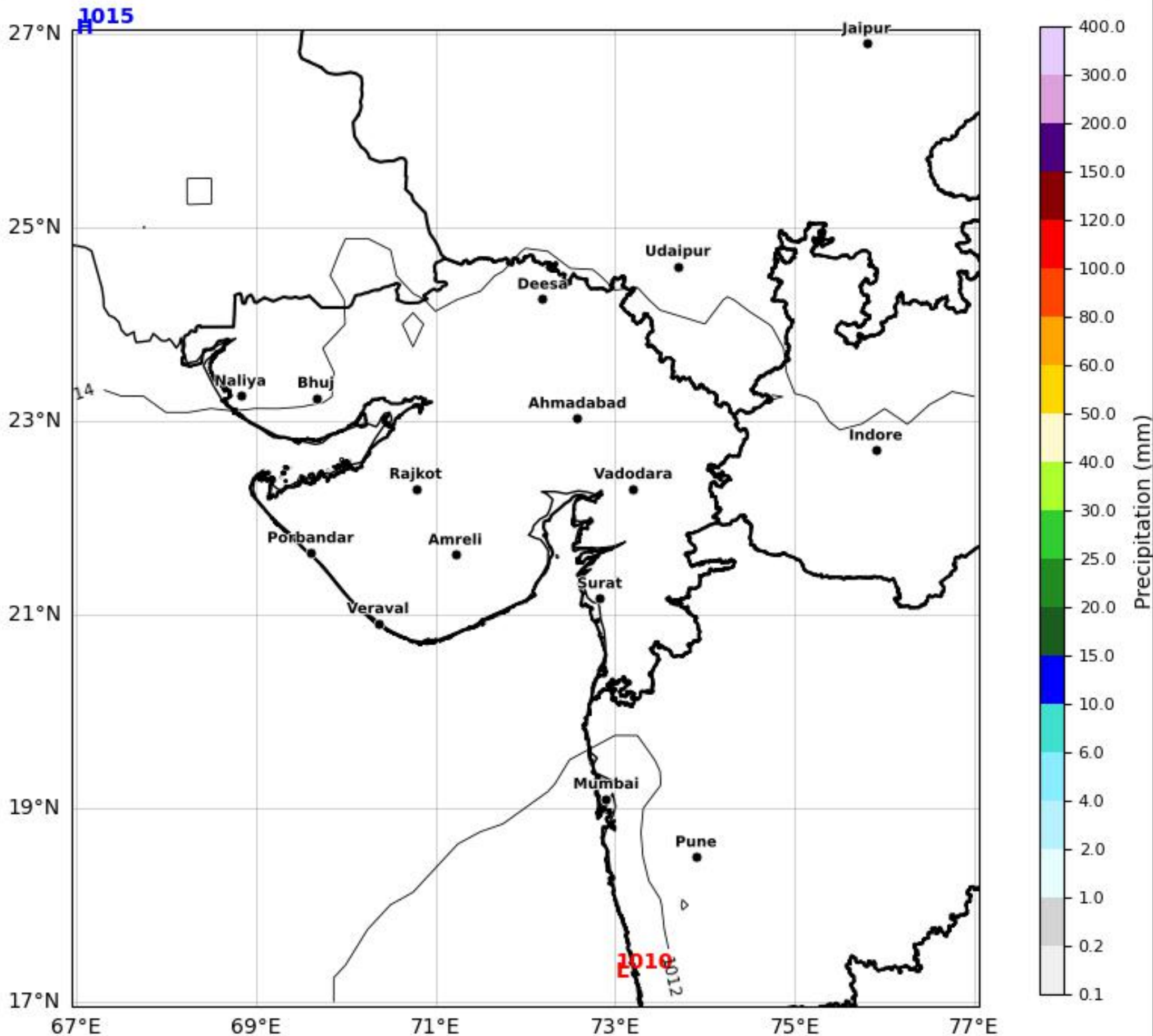
## Gujarat & Surrounding Region

Based on 30 Jan 2026 00Z valid for 09 Feb 2026 00Z

KOLA - West by gujaratweather.com - Data: ECMWF



KOLA: Kathiawar Ocean & Land Atmosphere - Experimental Weather Mapping Platform



Disclaimer: The images provided by gujaratweather.com are experimental and for informational purposes only. They are not official forecasts. We do not guarantee the accuracy, timeliness, or completeness of these images, which may contain errors due to data download scripts or software limitations. For reliable weather forecasts, Please refer to official agencies such as Indian Meteorological Department or ECMWF. The base map shown does not represent political boundaries.



# Daily Precipitation Forecast (264 HR)

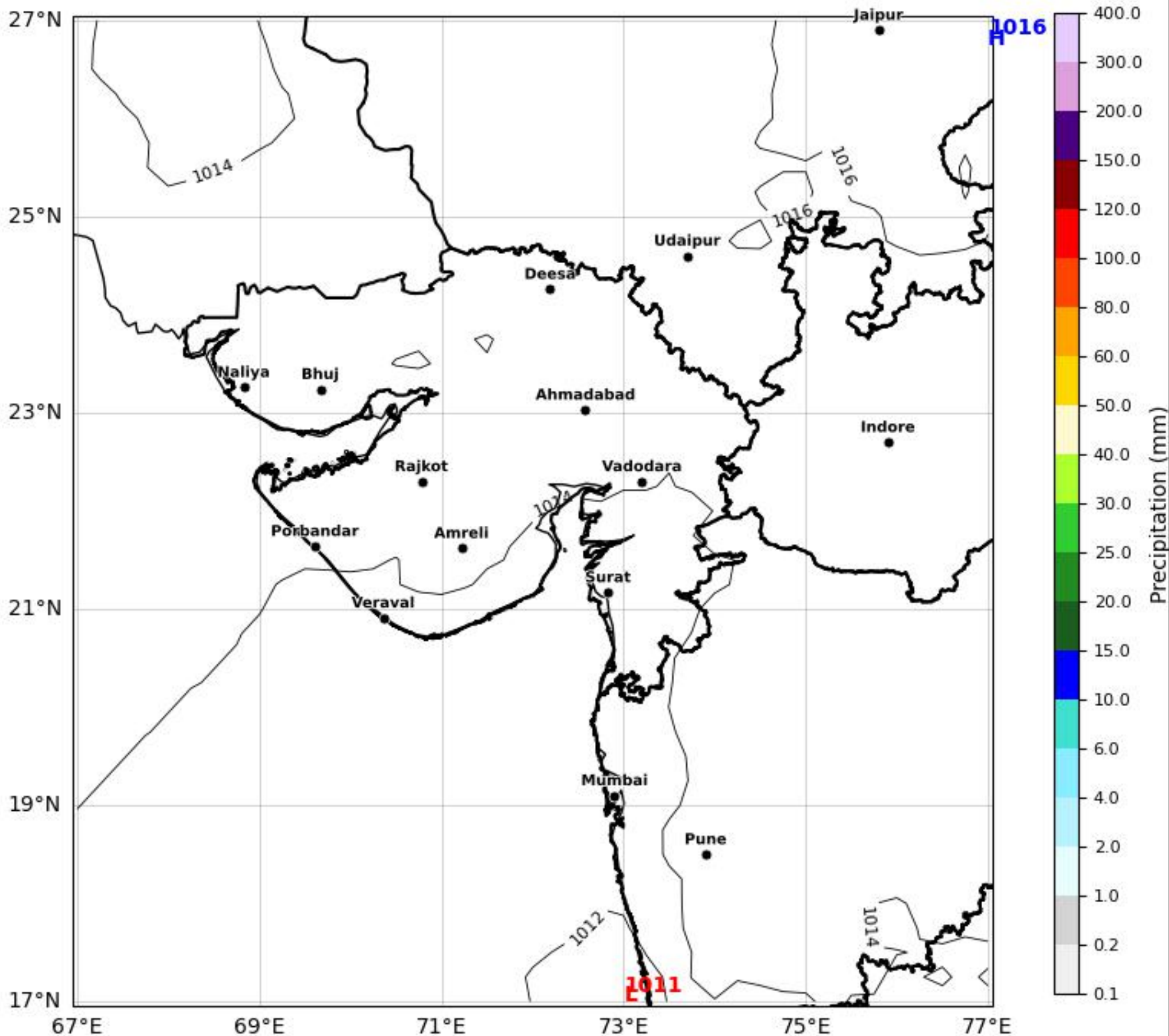
## Gujarat & Surrounding Region

Based on 30 Jan 2026 00Z valid for 10 Feb 2026 00Z

KOLA - West by gujaratweather.com - Data: ECMWF



KOLA: Kathiawar Ocean & Land Atmosphere - Experimental Weather Mapping Platform



Disclaimer: The images provided by gujaratweather.com are experimental and for informational purposes only. They are not official forecasts. We do not guarantee the accuracy, timeliness, or completeness of these images, which may contain errors due to data download scripts or software limitations. For reliable weather forecasts, Please refer to official agencies such as Indian Meteorological Department or ECMWF. The base map shown does not represent political boundaries.





# Daily Precipitation Forecast (288 HR)

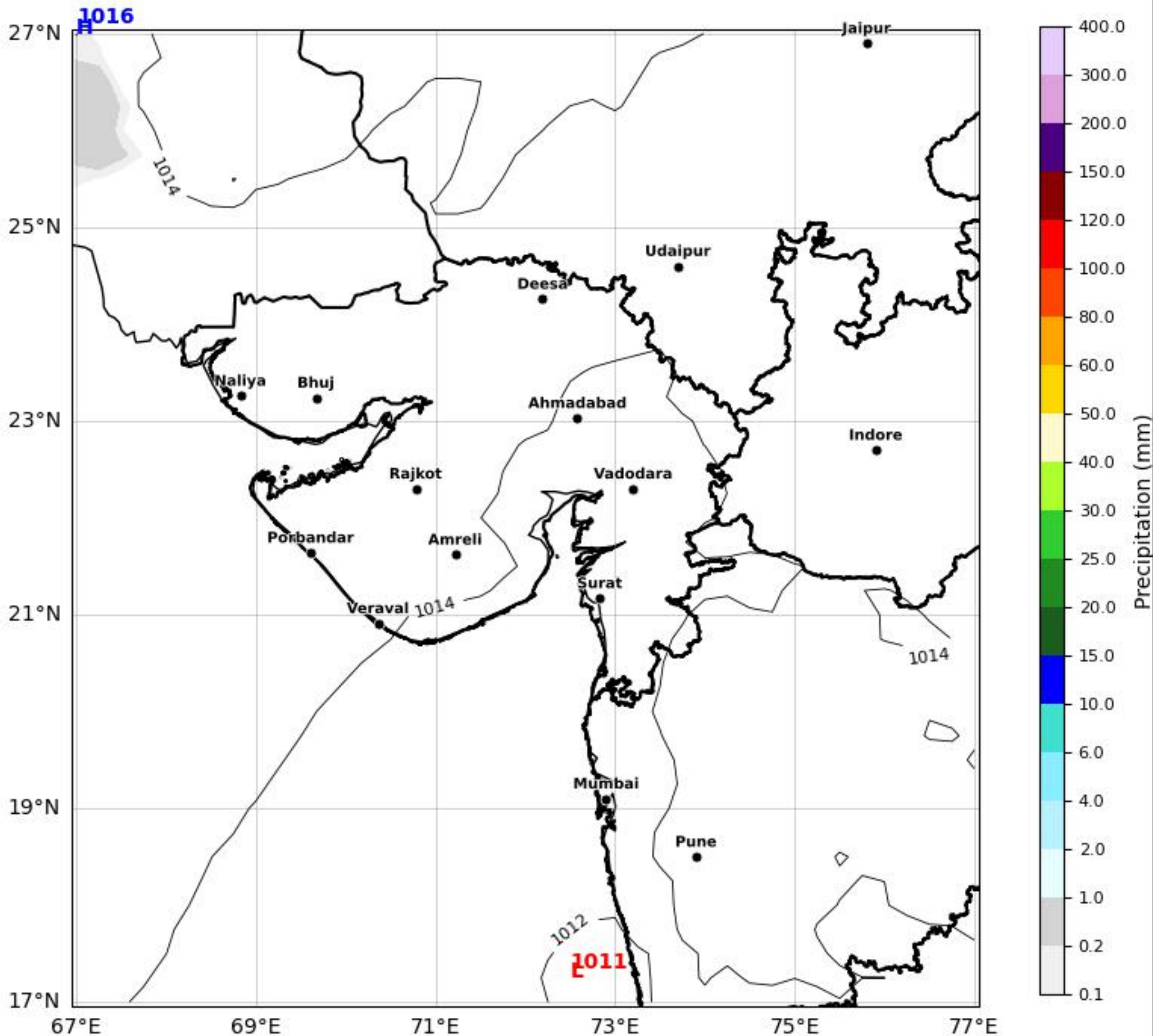
## Gujarat & Surrounding Region

Based on 30 Jan 2026 00Z valid for 11 Feb 2026 00Z

KOLA - West by gujaratweather.com - Data: ECMWF



KOLA: Kathiawar Ocean & Land Atmosphere - Experimental Weather Mapping Platform



Disclaimer: The images provided by gujaratweather.com are experimental and for informational purposes only. They are not official forecasts. We do not guarantee the accuracy, timeliness, or completeness of these images, which may contain errors due to data download scripts or software limitations. For reliable weather forecasts, Please refer to official agencies such as Indian Meteorological Department or ECMWF. The base map shown does not represent political boundaries.



# Daily Precipitation Forecast (312 HR)

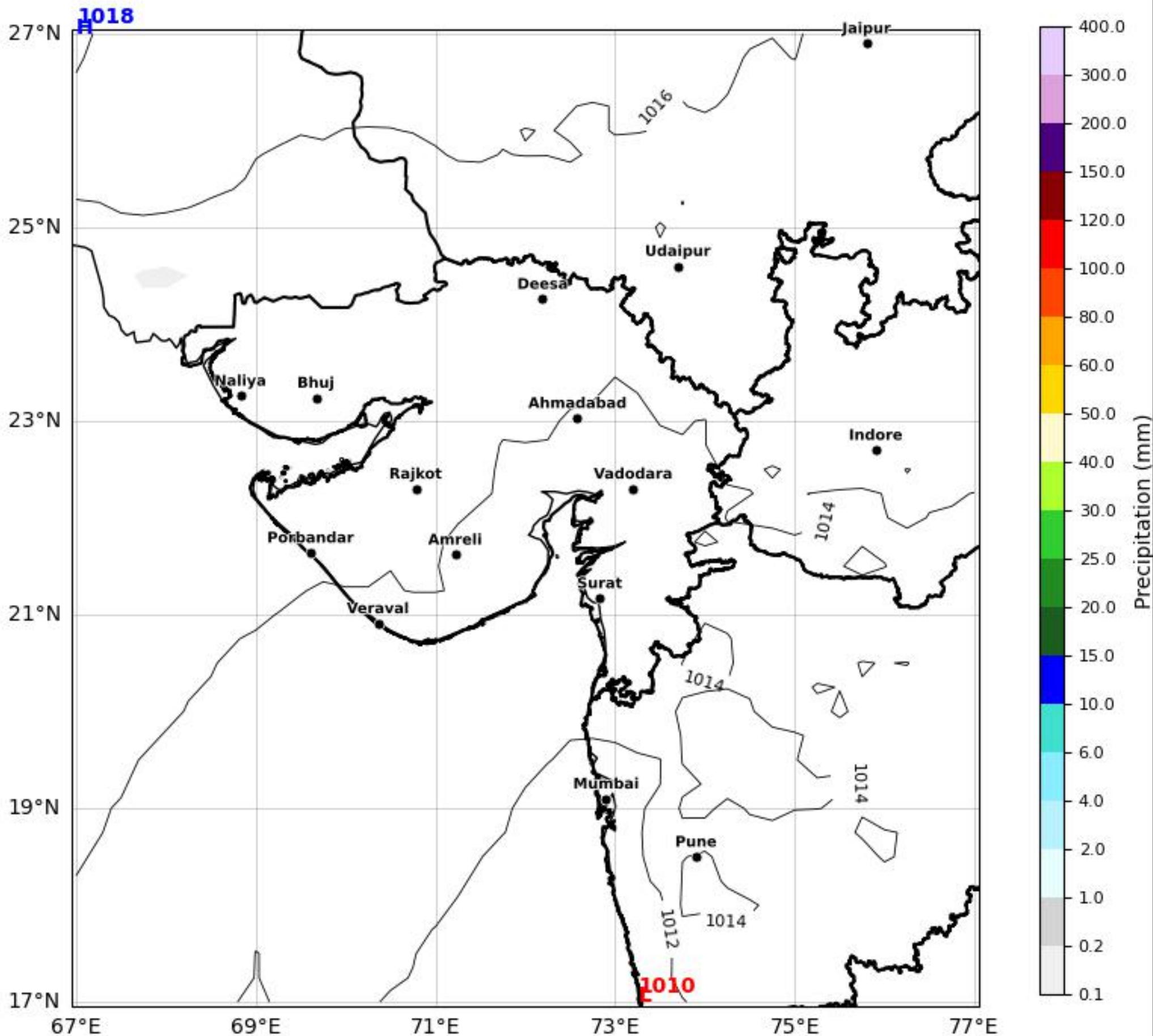
## Gujarat & Surrounding Region

Based on 30 Jan 2026 00Z valid for 12 Feb 2026 00Z

KOLA - West by gujaratweather.com - Data: ECMWF



KOLA: Kathiawar Ocean & Land Atmosphere - Experimental Weather Mapping Platform



Disclaimer: The images provided by gujaratweather.com are experimental and for informational purposes only. They are not official forecasts. We do not guarantee the accuracy, timeliness, or completeness of these images, which may contain errors due to data download scripts or software limitations. For reliable weather forecasts, Please refer to official agencies such as Indian Meteorological Department or ECMWF. The base map shown does not represent political boundaries.





# Daily Precipitation Forecast (336 HR)

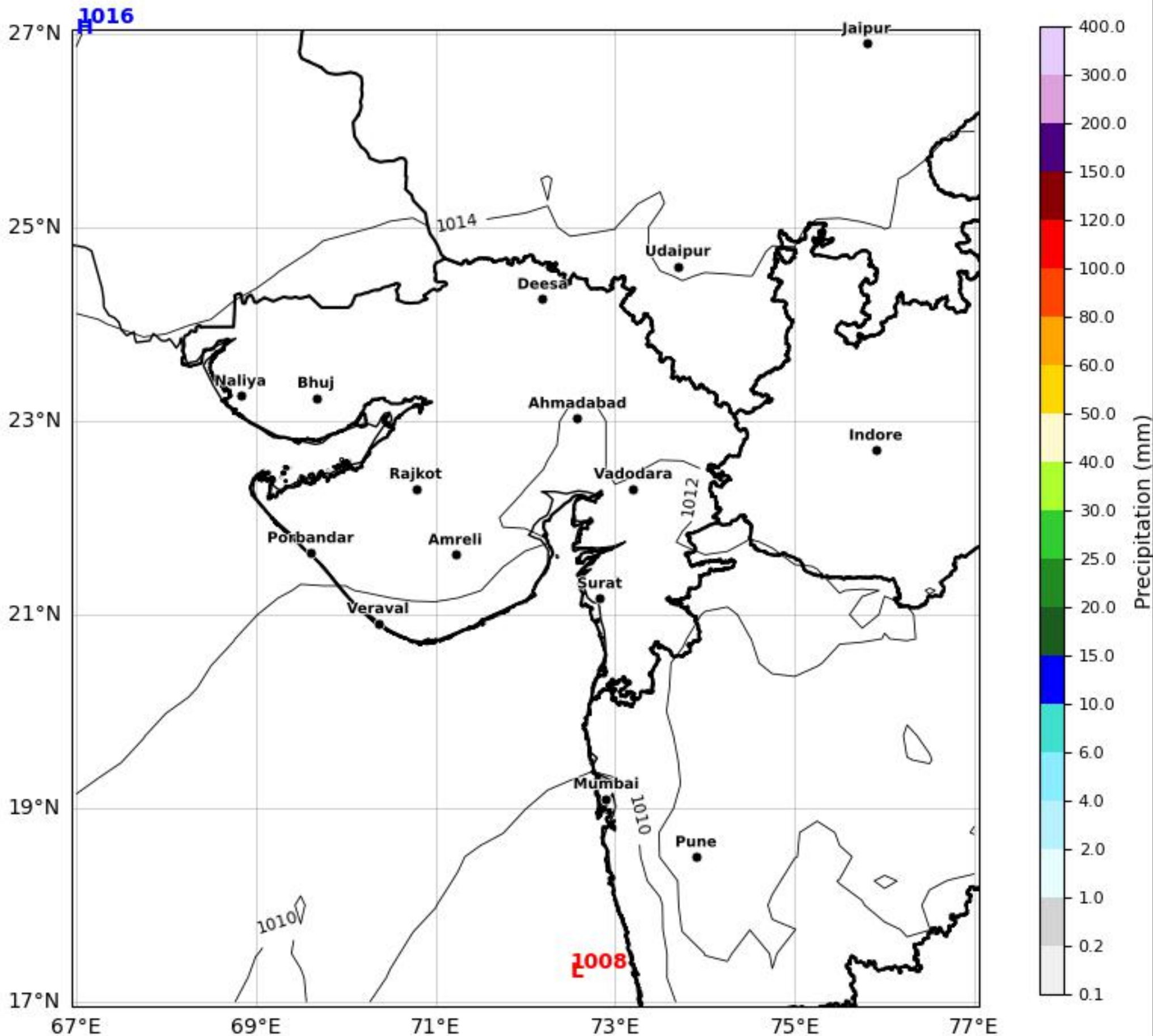
## Gujarat & Surrounding Region

Based on 30 Jan 2026 00Z valid for 13 Feb 2026 00Z

KOLA - West by gujaratweather.com - Data: ECMWF



KOLA: Kathiawar Ocean & Land Atmosphere - Experimental Weather Mapping Platform



Disclaimer: The images provided by gujaratweather.com are experimental and for informational purposes only. They are not official forecasts. We do not guarantee the accuracy, timeliness, or completeness of these images, which may contain errors due to data download scripts or software limitations. For reliable weather forecasts, Please refer to official agencies such as Indian Meteorological Department or ECMWF. The base map shown does not represent political boundaries.



# Daily Precipitation Forecast (360 HR)

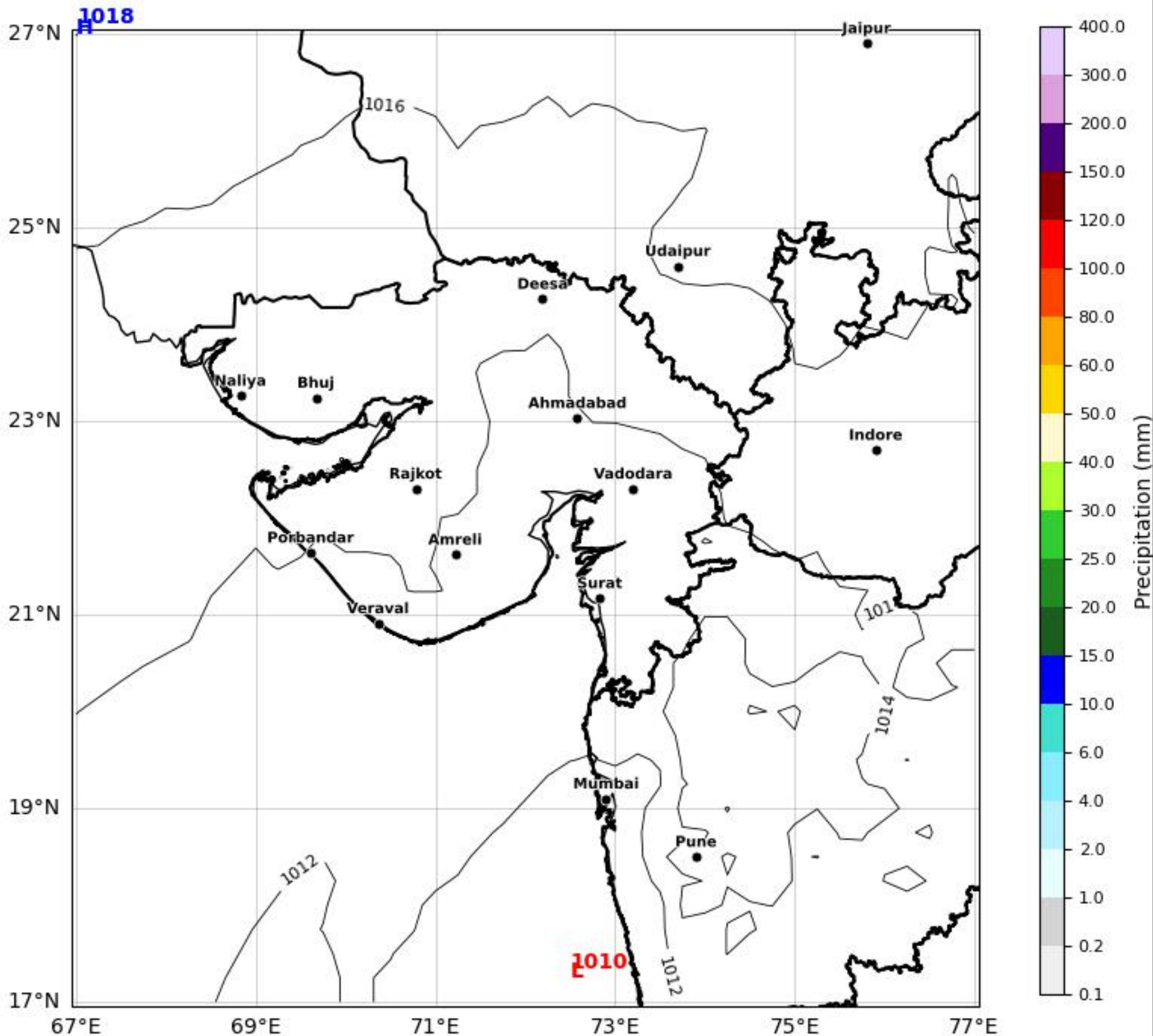
## Gujarat & Surrounding Region

Based on 30 Jan 2026 00Z valid for 14 Feb 2026 00Z

KOLA - West by gujaratweather.com - Data: ECMWF



KOLA: Kathiawar Ocean & Land Atmosphere - Experimental Weather Mapping Platform



Disclaimer: The images provided by gujaratweather.com are experimental and for informational purposes only. They are not official forecasts. We do not guarantee the accuracy, timeliness, or completeness of these images, which may contain errors due to data download scripts or software limitations. For reliable weather forecasts, Please refer to official agencies such as Indian Meteorological Department or ECMWF. The base map shown does not represent political boundaries.