



**India Meteorological Department
Earth System Science Organisation
(Ministry of Earth Sciences)**

BULLETIN NO. : 1 (BOB/03/2019)

TIME OF ISSUE: 1030 HOURS IST

DATED: 06.08.2019

FROM: INDIA METEOROLOGICAL DEPARTMENT (FAX NO. 24643965/24699216/24623220)

TO: CONTROL ROOM, NDM, MINISTRY OF HOME AFFAIRS (FAX.NO.23092398 / 23093750)
CONTROL ROOM NDMA (FAX.NO. 26701729)
CABINET SECRETARIAT (FAX.NO.23012284, 23018638)
PS TO HON'BLE MINISTER FOR S & T AND EARTH SCIENCES (FAX NO.23316745)
SECRETARY, MOES, (FAX NO. 24629777)
H.Q. (INTEGRATED DEFENCE STAFF AND CDS) (FAX NO. 23005137/23005147)
DIRECTOR GENERAL, DOORDARSHAN (23385843)
DIRECTOR GENERAL, AIR (23421101, 23421105, 23421219)
PIB MOES (FAX NO. 23389042)
UNI (FAX NO. 23355841)
D.G. NATIONAL DISASTER RESPONSE FORCE (NDRF) (FAX NO. 26105912, 2436, 3260)
DIRECTOR, PUNCTUALITY, INDIAN RAILWAYS (FAX NO. 23388503)
CHIEF SECRETARY, GOVT. OF ODISHA (FAX NO. 0674 -2536660)
CHIEF SECRETARY, CHATTISGARH (FAX NO. 0771-2221206)
CHIEF SECRETARY, MADHYA PRADESH (FAX NO. 0755 -2551521)
CHIEF SECRETARY, WEST BENGAL (FAX NO. 033-22144328)
CHIEF SECRETARY, JHARKHAND (FAX NO. 0651-2400255)
CHIEF SECRETARY, MAHARASHTRA (FAX NO. 022- 22028594)
CHIEF SECRETARY, ANDHRA PRADESH (FAX NO. 0866-2441029, 08645-246600)
CHIEF SECRETARY, TELANGANA (FAX NO. 040- 23452620)

Sub: Depression over northwest Bay of Bengal off north Odisha – West Bengal coasts

Latest observations and satellite imageries indicate that a **Depression** has formed over **northwest Bay of Bengal off north Odisha - West Bengal coasts** and lay centred at 0830 hrs IST of today, the 6th August, 2019 near latitude 20.5⁰N and longitude 88.0⁰E, about 160 km southeast of Balasore (Odisha) and about 130 km south-southeast of Digha (West Bengal). It is very likely to intensify into a Deep Depression during next 24 hours. It is very likely to move west northwestwards across Odisha - West Bengal coasts during next 48 hours.

Warning

(a) Rainfall:

- Light to moderate rainfall at most places with heavy to very heavy rainfall at a few places and isolated **extremely heavy falls** (≥ 20 cm) very likely over Odisha on 6th and 7th August. Light to moderate rainfall at most places with isolated heavy to very heavy and extremely heavy falls very likely over south Chhattisgarh during the same period. Light to moderate rainfall at most places with isolated heavy to very heavy falls are also very likely over Gangetic West Bengal and Jharkhand during 6th and 7th August 2019.
- Light to moderate rainfall at most places with heavy to very heavy falls at isolated places very likely over Madhya Pradesh on 6th August and light to moderate rainfall at most places with heavy to very heavy falls with isolated **extremely heavy falls** (≥ 20 cm) very likely over Madhya Pradesh on 7th and 8th August.

(b) Wind Warning:

Squally wind speed reaching 45-55 kmph gusting to 65 kmph very likely along and off West Bengal- Odisha Coasts during next 48 hours. Strong winds speed reaching 30-40 kmph gusting to 50 kmph are also very likely over interior areas of Odisha, Gangetic West Bengal and Jharkhand on 7th August.

(c) Sea Condition:

State of Sea will be rough to very rough over north Bay of Bengal and along & off Odisha - West Bengal Coasts on 6th and 7th August and also over adjoining central Bay of Bengal during next 24 hours.

(d) Fishermen Warning:

Fishermen are advised not to venture into northwest Bay of Bengal and along and off Odisha and West Bengal coasts during next 48 hrs.

The next bulletin will be issued at 1430 hrs IST of today, the 6th August, 2019.

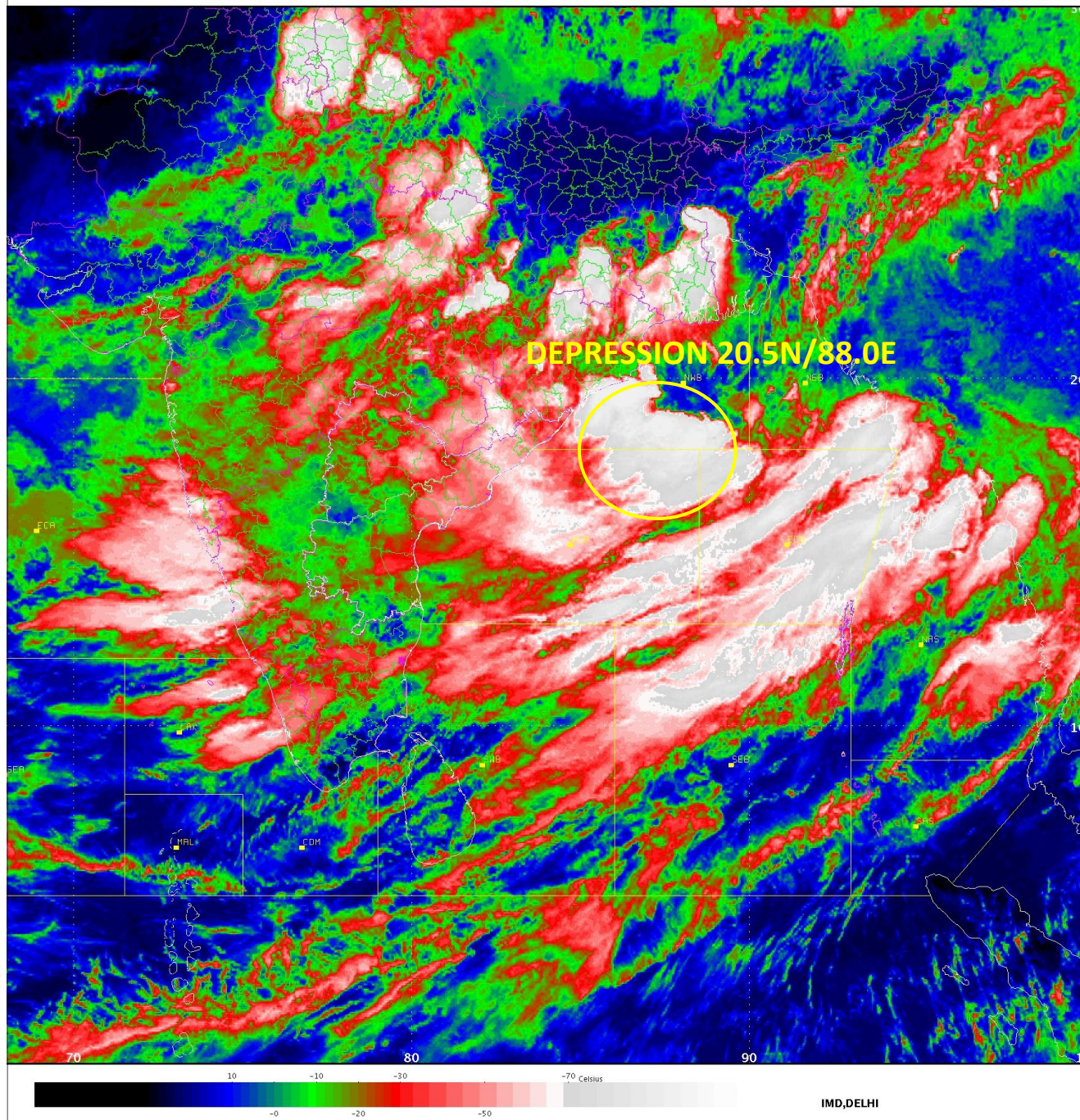
(Sunitha Devi)

Scientist-E, RSMC, New Delhi

Copy to: CRS, Pune/ ACWC Kolkata/ Chennai/CWC Bhubaneswar/MC Raipur/Bhopal/Hyderabad/ RMC Nagpur

SAT :INSAT-3D
IMG_TIR1_TEMP 10.8 um
SECTOR BAYOFBENGAL Mercator (NHC LUT)

06-08-2019/04:30 GMT
06-08-2019/10:00 IST



Spatial rainfall distribution: Isolated: <25%, A few: 26-50%, Many: 51-75%, Most: 76-100%
Rainfall amount (mm): Heavy rain: 64.5 – 115.5, Very heavy rain: 115.6 – 204.4, Extremely heavy rain: 204.5 or more.