



**India Meteorological Department  
Earth System Science Organisation  
(Ministry of Earth Sciences)**

**BULLETIN NO. : 31 (ARB/01/2019)**

**TIME OF ISSUE: 0800 HOURS IST**

**DATED: 14.06.2019**

**FROM: INDIA METEOROLOGICAL DEPARTMENT (FAX NO. 24643965/24699216/24623220)**

**TO: CONTROL ROOM, (NORTH BLOCK) MINISTRY OF HOME AFFAIRS (FAX.NO. 23092398/23093750)**

**CONTROL ROOM (NERC) DM DIVISION MHA (FAX . NO. 23438254)**

**CONTROL ROOM NDMA (FAX.NO. 26701729)**

**CABINET SECRETARIAT (FAX.NO.23012284, 23018638)**

**PS TO HON'BLE MINISTER FOR S & T AND EARTH SCIENCES (FAX NO.23316745)**

**SECRETARY, MOES, (FAX NO. 24629777)**

**H.Q. (INTEGRATED DEFENCE STAFF AND CDS) (FAX NO. 23005137/23005147)**

**DIRECTOR GENERAL, DOORDARSHAN (23114964)**

**DIRECTOR GENERAL, AIR (23421101, 23421105, 23421219)**

**PIB MOES (FAX NO. 23389042)**

**UNI (FAX NO. 23355841)**

**D.G. NATIONAL DISASTER RESPONSE FORCE (NDRF) (FAX NO. 26105912, 23438091)**

**DIRECTOR, PUNCTUALITY, INDIAN RAILWAYS (FAX NO. 23388503)**

**CHIEF SECRETARY, TAMILNADU (FAX NO. 044-25672304)**

**CHIEF SECRETARY, KERALA (FAX NO. 0471-2327176)**

**ADMINISTRATOR, LAKSHADWEEP ISLANDS (FAX NO. 04896262184)**

**ADMINISTRATOR, UNION TERRITORY OF DAMAN & DIU AND DADRA NAGAR HAVELI (0260-2230775)**

**CHIEF SECRETARY, KARNATAKA (FAX NO. 080-22258913)**

**CHIEF SECRETARY, GOA (FAX NO. 0832-2415201)**

**CHIEF SECRETARY, MAHARASHTRA (FAX NO. 022- 22028594)**

**CHIEF SECRETARY, GUJARAT (FAX NO. 079-23250305)**

**Sub: Very Severe Cyclonic Storm 'VAYU' over Northeast & adjoining Eastcentral Arabian Sea:  
Cyclone Warning for Gujarat Coast: Orange Message**

The **Very Severe Cyclonic Storm 'VAYU'** (pronounced as **VAA'YU**) over northeast & adjoining eastcentral Arabian Sea moved westnorthwestwards with a speed of about 06 kmph in last six hours and lay centred at 0530 hrs IST of today, the 14<sup>th</sup> June, 2019 near latitude 21.0°N and longitude 68.5°E over northeast & adjoining eastcentral Arabian Sea, about 130 km southwest of Porbandar (Gujarat), 185 km west of Veraval (Gujarat) and 250 km west of Diu.

**The system is moving west-northwestwards skirting the Saurashtra coast affecting Porbandar & Devbhoomi Dwarka with wind speed 60-70 kmph gusting to 80 kmph and Gir Somnath & Junagarh with wind speed 40-50 kmph gusting to 60 kmph. It is very likely to continue to affect these districts during next 12 hours and wind speed over these districts is very likely to decrease gradually thereafter.**

Forecast track and intensity are given in the following table:

<b>Date/Time(IST)</b>	<b>Position (Lat. °N/ long. °E)</b>	<b>Maximum sustained surface wind speed (Kmph)</b>	<b>Category of cyclonic disturbance</b>
14.06.19/0530	21.0/68.5	135-145 gusting to 160	Very Severe Cyclonic Storm
14.06.19/1130	21.0/68.3	120-130 gusting to 145	Very Severe Cyclonic Storm
14.06.19/1730	21.1/67.9	120-130 gusting to 145	Very Severe Cyclonic Storm
14.06.19/2330	21.2/67.4	110-120 gusting to 135	Severe Cyclonic Storm
15.06.19/0530	21.3/67.1	100-110 gusting to 125	Severe Cyclonic Storm
15.06.19/1730	21.3/66.7	90-100 gusting to 115	Severe Cyclonic Storm
16.06.19/0530	21.4/66.2	80-90 gusting to 100	Cyclonic Storm
16.06.19/1730	21.4/66.1	70-80 gusting to 100	Cyclonic Storm

**Spatial rainfall distribution: Isolated: <25%, A few: 26-50%, Many: 51-75%, Most: 76-100%**

**Rainfall amount (mm): Heavy rain: 64.5 – 115.5, Very heavy rain: 115.6 – 204.4, Extremely heavy rain: 204.5 or more.**

## Warnings:

### (i) Heavy rainfall warning:

Sub-Divisions	14 June 2019*	15 June 2019*
Saurashtra & Kutch	Widespread rainfall with heavy to very heavy falls at few places and extremely heavy falls at isolated places in the coastal districts of Saurashtra.	Rainfall at a few places with heavy falls at isolated places
Gujarat Region	Rainfall at a few places	Rainfall at a few places

Note: \* Rainfall till 0830 IST of next day.

Legends:

**Yellow: Be Updated; Orange- Be prepared; Red- Take action, Green: No warning**

Heavy rain: 64.5-115.5 mm/day; Very heavy rain: 115.6-204.4 mm/day; Extremely heavy rain: more than 204.4 mm/day

### (ii) Wind warning

- **14<sup>th</sup> June:** Gale wind speed of the order of **120-130 kmph gusting to 145 kmph** very likely over north Arabian Sea. Gale wind speed of the order of **60-70 kmph gusting to 80 kmph** very likely over Gujarat coast during next 12 hours and decrease gradually thereafter. It is very likely to be 40-50 kmph gusting to 60 kmph over northern parts of eastcentral Arabian Sea.
- **15<sup>th</sup> June:** Gale wind speed of the order of **100-110 kmph gusting to 125 kmph** very likely over north Arabian Sea. Squally wind speed of the order of **50-60 kmph gusting to 70 kmph** very likely over Gujarat coast.

### (iii) Sea condition

- The sea condition is phenomenal over north Arabian Sea till 15<sup>th</sup> June 2019 and over northern parts of eastcentral Arabian Sea during next 12 hours. The sea condition is rough to high over rest parts of eastcentral Arabian Sea on 14<sup>th</sup> and rough to very rough on 15<sup>th</sup> June 2019.

### (iv) Fishermen Warning

- The fishermen are advised not to venture into north Arabian Sea till 16<sup>th</sup>; along & off Gujarat coast till 15<sup>th</sup> and over Eastcentral Arabian Sea and along & off Maharashtra Coast on 14<sup>th</sup> June, 2019.
- Total suspension of fishing operations.

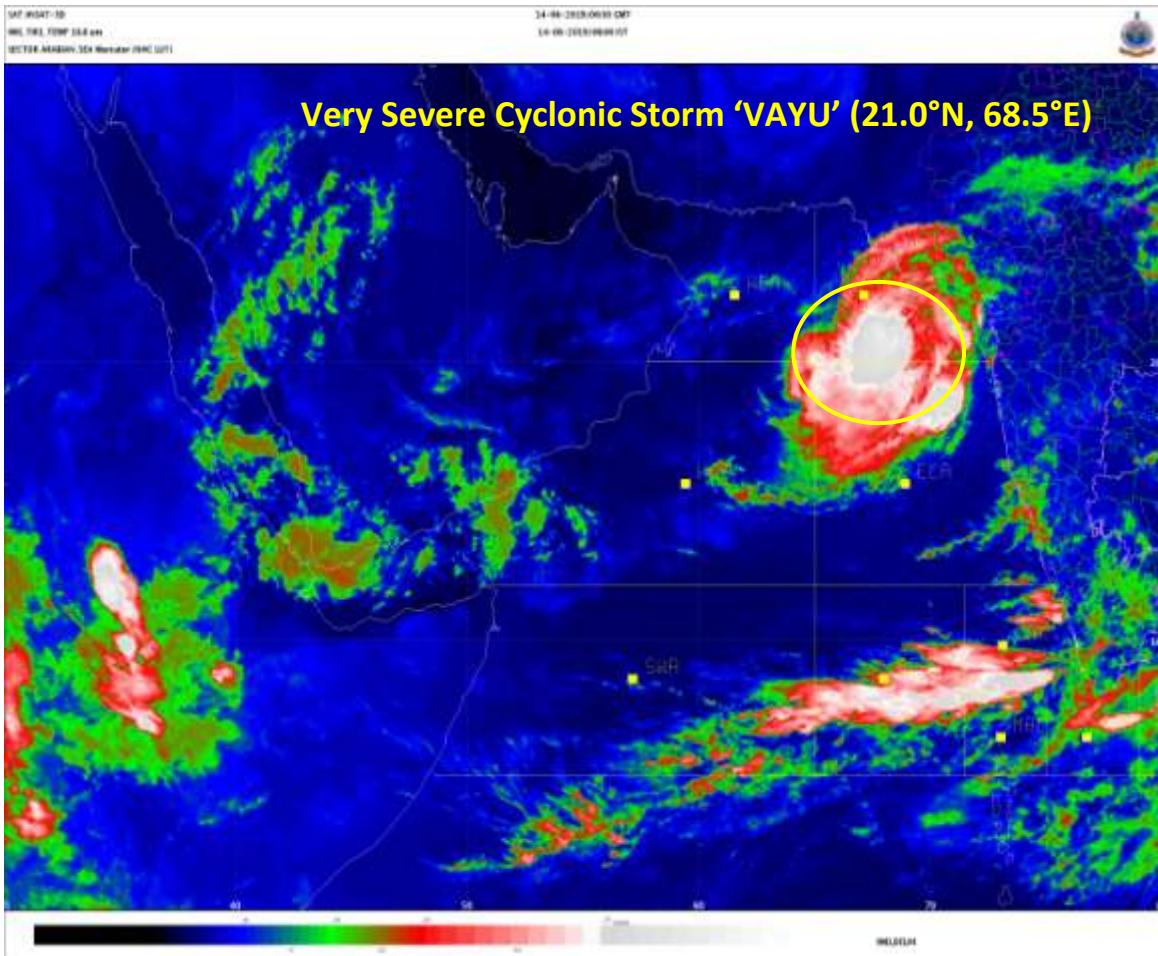
### (v) Damage Expected and Action suggested for Porbandar and Devbhoomi Dwarka:

- (i) Damage to thatched huts. (ii) Damage to power and communication lines due to breaking of branches. (iii) Major damage to Kutcha and minor damage to Pucca roads. (iv) Some damage to paddy crops, banana, papaya trees and orchards. (v) Sea water inundation in low lying areas after erosion of Kutcha embankments.

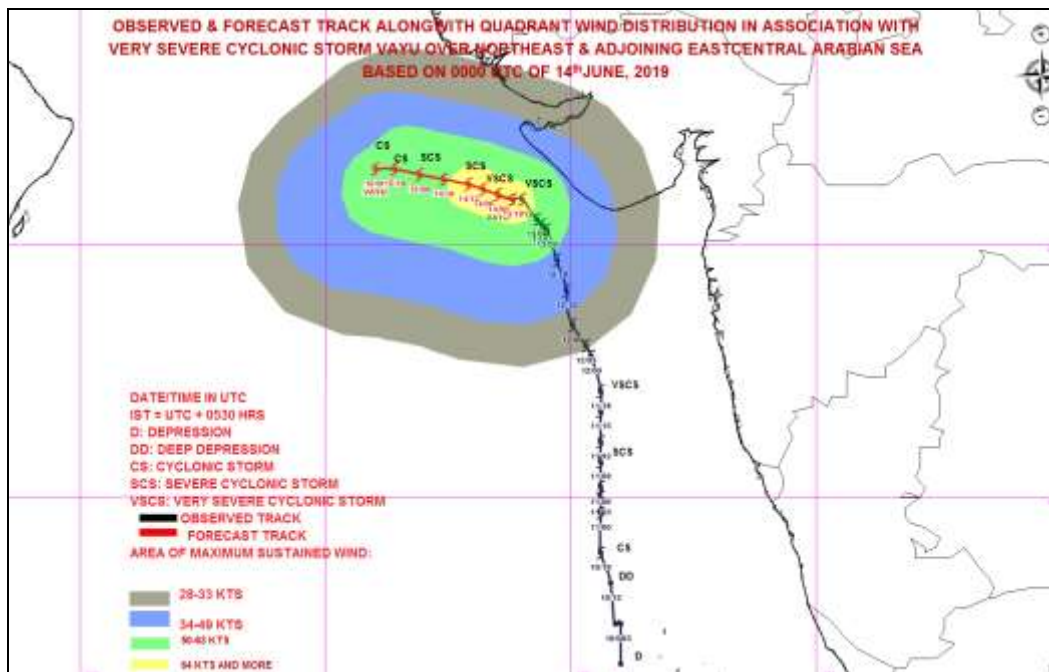
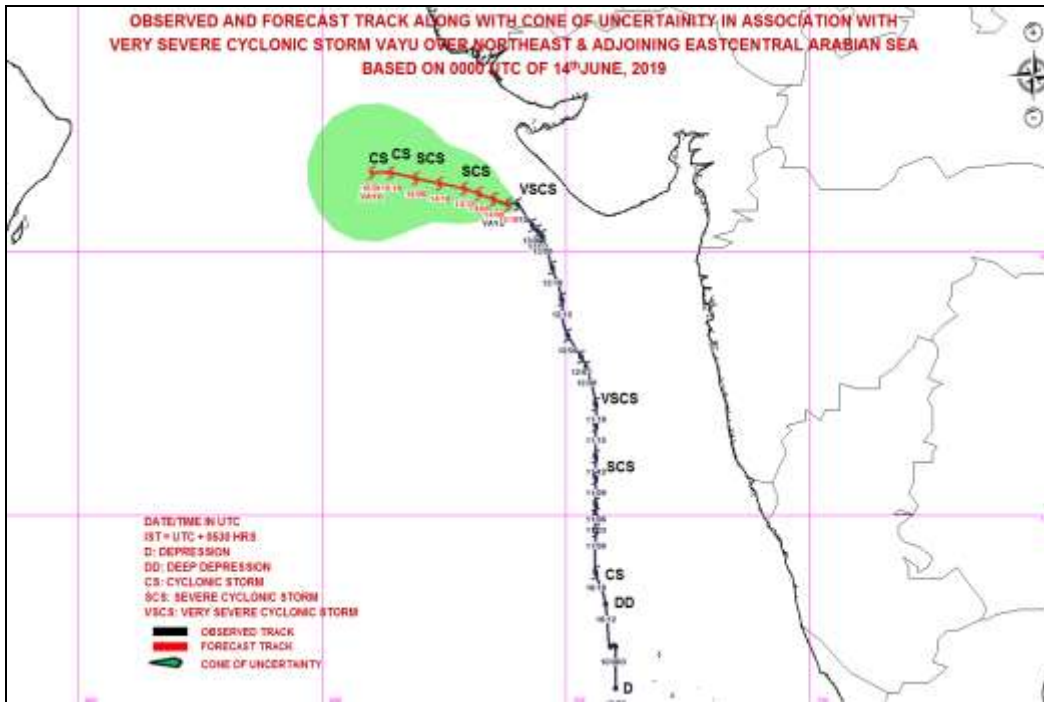
The next bulletin will be issued at 1130 hrs IST of 14<sup>th</sup> June, 2019.

(D. R. Pattanaik)  
Scientist-E, RSMC, New Delhi

Copy to: CRS, Pune/ ACWC Chennai/ ACWC Mumbai/MC Goa/ MC Bengaluru/CWC Ahmedabad/Thiruvananthapuram.



**Spatial rainfall distribution: Isolated: <25%, A few: 26-50%, Many: 51-75%, Most: 76-100%**  
**Rainfall amount (mm): Heavy rain: 64.5 – 115.5, Very heavy rain: 115.6 – 204.4, Extremely heavy rain: 204.5 or more.**



MSW(knot)/kmph)	Impact	Action
28-33 /(52–61 )	Very rough seas.	Total suspension of fishing operations
34-40/(62-74)	High to very high seas	Total suspension of fishing operations
41-63/(75-117)	Very High seas	Total suspension of fishing operations
≥ 64 (≥118)	Phenomenal	Total suspension of fishing operations

Spatial rainfall distribution: Isolated: <25%, A few: 26-50%, Many: 51-75%, Most: 76-100%  
 Rainfall amount (mm): Heavy rain: 64.5 – 115.5, Very heavy rain: 115.6 – 204.4, Extremely heavy rain: 204.5 or more.