



**India Meteorological Department  
Earth System Science Organisation  
(Ministry of Earth Sciences)**

**BULLETIN NO. : 53 (BOB/02/2019)**

**TIME OF ISSUE: 0830 HOURS IST**

**DATED: 03.05.2019**

**FROM: INDIA METEOROLOGICAL DEPARTMENT (FAX NO. 24643965/24699216/24623220)**

**TO: CONTROL ROOM, NDM, MINISTRY OF HOME AFFAIRS (FAX.NO. 23092398/23093750)**

**CONTROL ROOM NDMA (FAX.NO. 26701729)**

**CABINET SECRETARIAT (FAX.NO.23012284, 23018638)**

**PS TO HON'BLE MINISTER FOR S & T AND EARTH SCIENCES (FAX NO.23316745)**

**SECRETARY, MOES, (FAX NO. 24629777)**

**H.Q. (INTEGRATED DEFENCE STAFF AND CDS) (FAX NO. 23005137/23005147)**

**DIRECTOR GENERAL, DOORDARSHAN (23385843)**

**DIRECTOR GENERAL, AIR (23421101, 23421105, 23421219)**

**PIB MOES (FAX NO. 23389042)**

**UNI (FAX NO. 23355841)**

**D.G. NATIONAL DISASTER RESPONSE FORCE (NDRF) (FAX NO. 26105912, 2436 3260)**

**DIRECTOR, PUNCTUALITY, INDIAN RAILWAYS (FAX NO. 23388503)**

**CHIEF SECRETARY, GOVT. OF ODISHA (FAX NO. 0674 -2536660)**

**CHIEF SECRETARY, ANDHRA PRADESH (FAX NO. 0863-2441029, 08645-246600)**

**CHIEF SECRETARY, WEST BENGAL (FAX NO. 033-22144328)**

**CHIEF SECRETARY, PUDUCHERRY (FAX NO. 0413-2337575)**

**CHIEF SECRETARY, ASSAM (FAX NO. 0361 - 2237200)**

**CHIEF SECRETARY, MEGHALAYA (FAX NO. 0364- 2225978)**

**CHIEF SECRETARY, ARUNACHAL PRADESH (FAX NO. 0360- 2215719/1187)**

**Sub: Extremely Severe Cyclonic Storm "FANI" over Northwest & adjoining Westcentral Bay of Bengal: Cyclone Warning for Odisha, West Bengal and Srikakulam, Vijayanagaram & Visakhapatnam Districts of Andhra Pradesh Coasts: Red Message**

The **Extremely Severe Cyclonic Storm 'FANI'** (pronounced as 'FONI') over Northwest & adjoining Westcentral Bay of Bengal moved north-northeastwards with a speed of about 17 kmph in last six hours and lay centred at 0530 hrs IST of 03<sup>rd</sup> May, 2019 over Northwest & adjoining Westcentral Bay of Bengal near latitude 19.1°N and longitude 85.5°E, about 85 km south-southwest of Puri (Odisha), about 70 km east-southeast of Gopalpur (Odisha), about 280 km northeast of Vishakhapatnam (Andhra Pradesh), and 390 km south-southwest of Digha (West Bengal).

It is very likely to move north-northeastwards and cross Odisha Coast between Gopalpur and Chandbali, close to Puri during 3<sup>rd</sup> May forenoon (0800-1100 IST) with maximum sustained wind speed of 170-180 kmph gusting to 200 kmph.

After the landfall, the system is very likely to continue to move north-northeastwards, weaken gradually and emerge into Gangetic West Bengal as a Severe Cyclonic Storm with wind speed of 90-100 Kmph gusting to 115 Kmph by early morning of 4<sup>th</sup> May. It is very likely to move further north-northeastwards and emerge into Bangladesh on 4<sup>th</sup> May evening as a Cyclonic Storm with wind speed 60-70 Kmph gusting to 80 Kmph.

The cyclone is being tracked by Doppler Weather Radars Vishakhapatnam & Paradip.

**Spatial rainfall distribution: Isolated: <25%, A few: 26-50%, Many: 51-75%, Most: 76-100%**

**Rainfall amount (mm): Heavy rain: 64.5 – 115.5, Very heavy rain: 115.6 – 204.4, Extremely heavy rain: 204.5 or more.**

Forecast track and intensity are given in the following table:

| Date/Time(IST) | Position<br>(Lat. °N/ long. °E) | Maximum sustained<br>surface<br>wind speed (Kmph) | Category of cyclonic<br>Disturbance |
|----------------|---------------------------------|---|-------------------------------------|
| 03.05.19/0530  | 19.1/85.5                       | 185-195 gusting to 205                            | Extremely Severe Cyclonic Storm     |
| 03.05.19/1130  | 20.0/85.9                       | 170-180 gusting to 200                            | Extremely Severe Cyclonic Storm     |
| 03.05.19/1730  | 20.8/86.4                       | 150-160 gusting to 175                            | Very Severe Cyclonic Storm          |
| 03.05.19/2330  | 21.6/86.9                       | 130-140 gusting to 150                            | Very Severe Cyclonic Storm          |
| 04.05.19/0530  | 22.4/87.4                       | 100-110 gusting to 120                            | Severe Cyclonic Storm               |
| 04.05.19/1730  | 24.0/88.4                       | 70-80 gusting to 90                               | Cyclonic Storm                      |
| 05.05.19/0530  | 25.6/90.0                       | 40-50 gusting to 60                               | Deep Depression                     |

### Warnings:

#### (i) Heavy rainfall warning

- **North Andhra Pradesh:** Light to moderate rainfall at most places with heavy to very heavy rainfall at isolated places over Srikakulam district on 3<sup>rd</sup> May.
- **Odisha:** Moderate rainfall at most places and heavy to very heavy rainfall at a few places and **extremely heavy falls** at isolated places over coastal Odisha & adjoining districts of interior Odisha on 3<sup>rd</sup> May. Light to moderate rainfall at most places with heavy to very heavy falls at isolated places over Balasore, Mayurbhanj districts of north Odisha on 4<sup>th</sup> May.
- **West Bengal:** Light to moderate rainfall at most places with heavy to very heavy rainfall at a few places and **extremely heavy falls** at isolated places very likely over coastal & adjoining districts of West Bengal on 3<sup>rd</sup>; and heavy to very heavy falls at isolated places over Gangetic West Bengal on 4<sup>th</sup> May. Light to moderate rainfall at most places with heavy falls at isolated places over Sub-Himalayan West Bengal & Sikkim on 4<sup>th</sup> May.
- **Arunachal Pradesh, Assam & Meghalaya and Nagaland, Manipur, Mizoram & Tripura:** Light to moderate rainfall at most places with isolated heavy to very heavy falls very likely over Arunachal Pradesh and Assam & Meghalaya on 4<sup>th</sup> & 5<sup>th</sup> May; with isolated extremely heavy falls over Assam & Meghalaya on 4<sup>th</sup>. Light to moderate rainfall at many places with isolated heavy falls very likely over Nagaland, Manipur, Mizoram & Tripura on 4<sup>th</sup>.

#### (ii) Wind warning

- Gale wind speed reaching 140-150 kmph gusting to 165 kmph is prevailing along & off Puri and Jagatsighpur districts of Odisha coast. It is very likely to increase gradually and become 170-180 kmph gusting to 200 kmph during next 06 hours and 150-160 kmph gusting to 180 kmph along & off remaining districts of coastal Odisha and north Andhra Pradesh (Srikakulam and Vijayanagaram districts) during next 6 hours and decrease thereafter.
- Squally wind speed reaching 40-50 kmph gusting to 60 kmph is very likely along & off West Bengal coast during next 12 hours. It is very likely become gale wind speed reaching 60-70 kmph gusting to 85 kmph from 3<sup>rd</sup> May afternoon and become 90-100 kmph gusting to 115 kmph from 4<sup>th</sup> May early morning for subsequent 12 hours and decrease thereafter.

#### (ii) Sea condition

- The sea condition is phenomenal over northwest and adjoining westcentral Bay of Bengal, off north Andhra Pradesh- south Odisha Coasts during next 6 hours and is likely to become high to very high subsequently for the next 24 hours. Very rough to high seas are likely to prevail over Northwest Bay of Bengal along and off Odisha & West Bengal coasts till 04 May.

**Spatial rainfall distribution: Isolated: <25%, A few: 26-50%, Many: 51-75%, Most: 76-100%**

**Rainfall amount (mm): Heavy rain: 64.5 – 115.5, Very heavy rain: 115.6 – 204.4, Extremely heavy rain: 204.5 or more.**

- Sea conditions very likely to be very rough to high along & off south Andhra Pradesh Coasts during next 6 hours.

**(iii) Storm surge Warning**

- Storm surge of about 1.5 meter height above astronomical tide is very likely to inundate low lying areas of Ganjam, Khurda, Puri & Jagatsinghpur Districts of Odisha at the time of landfall.

**(iv) Fishermen Warning**

- The fishermen are advised not to venture into deep sea areas of westcentral Bay of Bengal, along & off Andhra Pradesh coasts during next 12 hours; over northwest & adjoining Westcentral Bay of Bengal along & off Odisha and West Bengal coasts till 04 May.

**(v) (a) Damage Expected and Action suggested for Ganjam, Gajapati, Khurda, Puri, Jagatsinghpur districts of Odisha.**

(i) Extensive damage to all types of kutcha houses, some damage to old badly managed Pucca structures. Potential threat from flying objects. (ii) Extensive uprooting of communication and power poles. (iii) Disruption of rail/road link at several places. (iv) Extensive damage to standing crops, plantations, orchards. (v) Blowing down of Palm and coconut trees. (vi) Uprooting of large bushy trees. (vii) Large boats and ships may get torn from their moorings.

**Action Suggested:**

(i) Total suspension of fishing operations. (ii) Extensive evacuation from coastal areas. (iii) Diversion or suspension of rail and road traffic. (iv) People in affected areas to remain indoors. (v) Movement in motor boats and small ships not advisable.

(i) Total destruction of thatched houses/ extensive damage to kutcha houses. Some damage to pucca houses. Potential threat from flying objects. (ii) Bending/ uprooting of power and communication poles. (iii) Major damage to Kutcha and Pucca roads. Flooding of escape routes. Minor disruption of railways, overhead powerlines and signalling systems. (iv) Widespread damage to standing crops, plantations, orchards, falling of green coconuts and tearing of palm fronds. Blowing down of bushy trees like mango. (v) Small boats, country crafts may get detached from moorings. (vi) Visibility severely affected. (vii) Hoarding, flex and banners hanging loose are likely to fly and damage surroundings. These should be removed.

**(b) Damage Expected and action suggested for Kendrapara, Bhadrak, Jajpur, Balasore districts of Odisha and east & west Medinipur, south & north 24 Parganas, Howrah, Hoogli, Kolkata districts of West Bengal and Srikakulam, Visakhapatnam and Vijayanagaram districts of Andhra Pradesh**

**Action Suggested:**

(i) Total suspension of fishing operations. Mobilise evacuation from coastal areas. (ii) Judicious regulation of rail and road traffic. (iii) People in affected areas to remain indoors. (iv) Movement in motor boats and small ships unsafe.

**(vi) Post Landfall Outlook:**

After the landfall the system is very likely to continue to move north-northeastwards, weaken gradually and emerge into Gangetic West Bengal as a Severe Cyclonic Storm and move to Bangladesh thereafter after weakening.

**Spatial rainfall distribution: Isolated: <25%, A few: 26-50%, Many: 51-75%, Most: 76-100%**

**Rainfall amount (mm): Heavy rain: 64.5 – 115.5, Very heavy rain: 115.6 – 204.4, Extremely heavy rain: 204.5 or more.**

- (a) Interior Districts of west Bengal are very likely to experience gale wind speed of 90-100 Kmph gusting to 115 Kmph by early morning of 4<sup>th</sup> May. It is very likely to decrease gradually becoming 60-70 Kmph gusting to 80 Kmph by the evening of 4<sup>th</sup> May.
- (b) Interior districts adjoining to south coastal Odisha are very likely to experience cyclone wind speed of 120-130 Kmph gusting to 150 Kmph for 6 hours after landfall and 90-100 gusting to 120 kmph over districts adjoining north coastal Odisha from 3<sup>rd</sup> evening till early morning of 4<sup>th</sup> May and decrease thereafter.

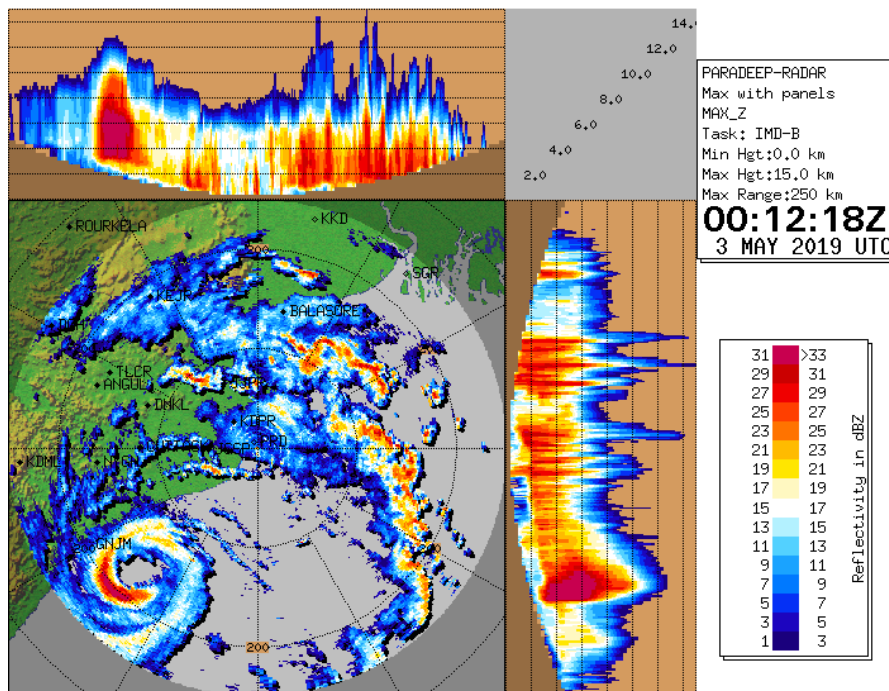
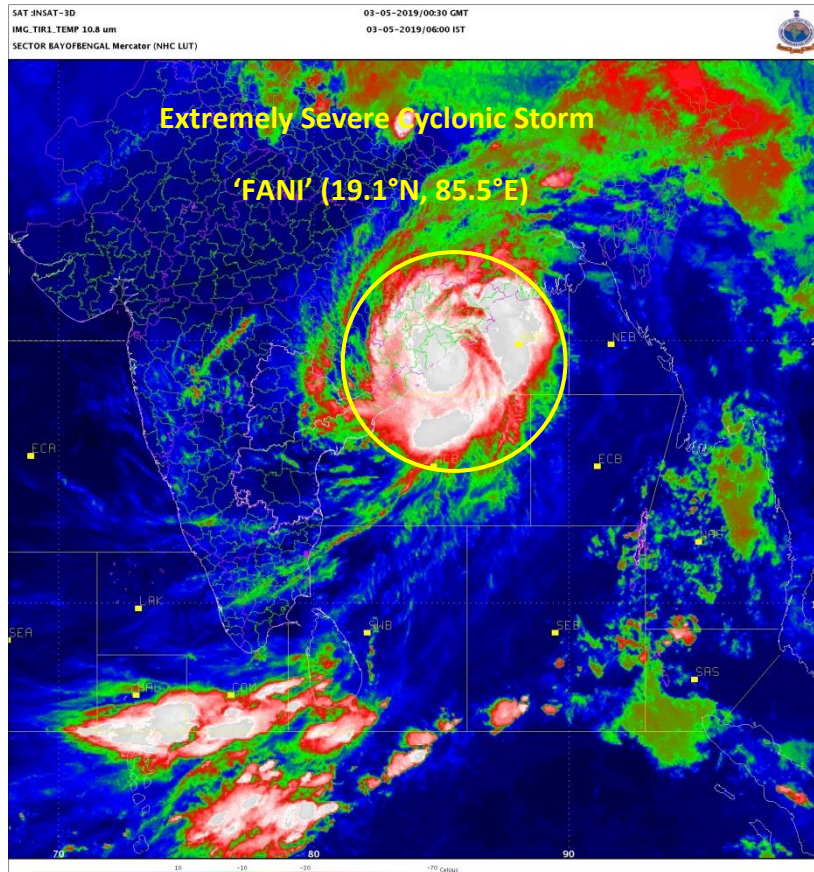
**Damage Expected and Action suggested for adjoining interior districts of Odisha and Gangetic West Bengal.**

- (i) Minor damage to power and communication lines. (ii) Major damage to Kutcha and some damage to Pucca roads. Flooding of escape routes. (iii) Breaking of tree branches, uprooting of large avenue trees. (iv) Moderate damage to banana and papaya trees. (v) Large dead limbs blown from trees.

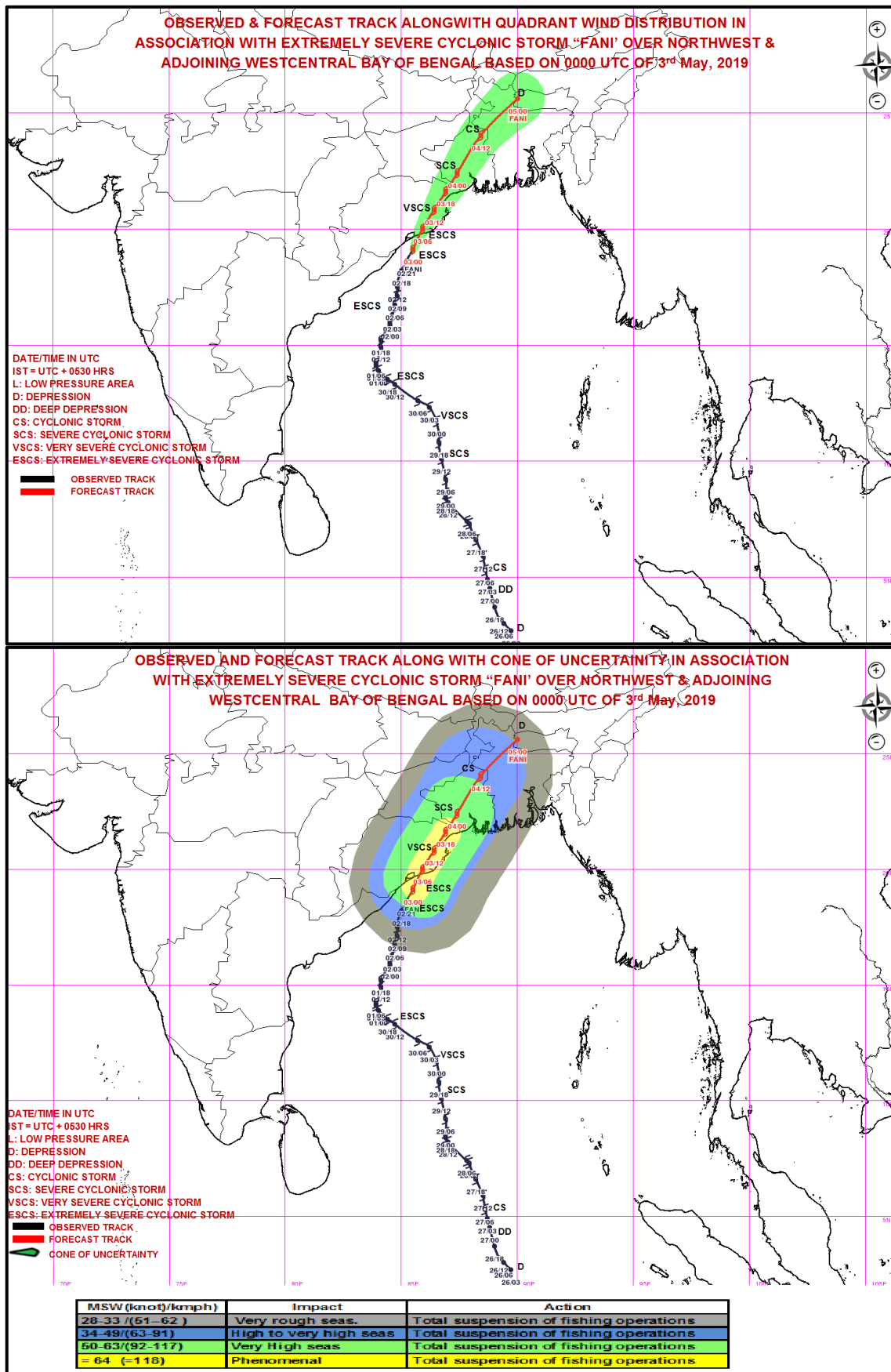
*The next bulletin will be issued at 1130 hrs IST of 03<sup>rd</sup> May, 2019.*

**(Sunitha Devi S)**  
**Scientist-E, RSMC, New Delhi**

*Copy to: CRS, Pune/ACWC Kolkata/Chennai/CWC Bhubaneswar/CWC Visakhapatnam*



**Spatial rainfall distribution: Isolated: <25%, A few: 26-50%, Many: 51-75%, Most: 76-100%**  
**Rainfall amount (mm): Heavy rain: 64.5 – 115.5, Very heavy rain: 115.6 – 204.4, Extremely heavy rain: 204.5 or more.**



**Spatial rainfall distribution: Isolated: <25%, A few: 26-50%, Many: 51-75%, Most: 76-100%**  
**Rainfall amount (mm): Heavy rain: 64.5 – 115.5, Very heavy rain: 115.6 – 204.4, Extremely heavy rain: 204.5 or more.**