



**India Meteorological Department  
Earth System Science Organisation  
(Ministry of Earth Sciences)**

**BULLETIN NO. : 32 (BOB/02/2019)**

**TIME OF ISSUE: 1700 HOURS IST**

**DATED: 30.04.2019**

**FROM: INDIA METEOROLOGICAL DEPARTMENT (FAX NO. 24643965/24699216/24623220)**

**TO: CONTROL ROOM, NDM, MINISTRY OF HOME AFFAIRS (FAX.NO. 23093750)**

**CONTROL ROOM NDMA (FAX.NO. 26701729)**

**CABINET SECRETARIAT (FAX.NO.23012284, 23018638)**

**PS TO HON'BLE MINISTER FOR S & T AND EARTH SCIENCES (FAX NO.23316745)**

**SECRETARY, MOES, (FAX NO. 24629777)**

**H.Q. (INTEGRATED DEFENCE STAFF AND CDS) (FAX NO. 23005137/23005147)**

**DIRECTOR GENERAL, DOORDARSHAN (23385843)**

**DIRECTOR GENERAL, AIR (23421105, 23421219)**

**PIB MOES (FAX NO. 23389042)**

**UNI (FAX NO. 23355841)**

**D.G. NATIONAL DISASTER RESPONSE FORCE (NDRF) (FAX NO. 26105912, 2436 3260)**

**DIRECTOR, PUNCTUALITY, INDIAN RAILWAYS (FAX NO. 23388503)**

**CHIEF SECRETARY, GOVT. OF ODISHA (FAX NO. 0674 -2536660)**

**CHIEF SECRETARY, ANDHRA PRADESH (FAX NO. 0863-2441029, 08645-246600)**

**CHIEF SECRETARY, TAMIL NADU (FAX NO. 044-25672304)**

**CHIEF SECRETARY, WEST BENGAL (FAX NO. 033-22144328)**

**CHIEF SECRETARY, PUDUCHERRY (FAX NO. 0413-2337575)**

**CHIEF SECRETARY, KERALA (FAX NO. 0471-2327176)**

**Sub: Very Severe Cyclonic Storm "FANI" over Southwest and adjoining westcentral & Southeast Bay of Bengal: Cyclone Alert for Odisha, West Bengal & Srikakulam and Vijayanagaram Districts of Andhra Pradesh Coasts: Yellow Message**

The **Very Severe Cyclonic Storm 'FANI'** (pronounced as 'FONI') over Southwest & adjoining Southeast Bay of Bengal moved northwestwards with a speed of about 21 kmph in last six hours and lay centred at 1430 hrs IST of 30<sup>th</sup> April, 2019 over Southwest and adjoining westcentral & Southeast Bay of Bengal near latitude 13.0°N and longitude 85.3°E, about 760 km south-southwest of Puri (Odisha) and 560 km south-southeast of Vishakhapatnam (Andhra Pradesh) and about 660 km north-northeast of Trincomalee (Sri Lanka). It is very likely to intensify further into an **Extremely Severe Cyclonic Storm** during next 06 hours. **It is very likely to move northwestwards till 01<sup>st</sup> May evening and thereafter recurve north-northeastwards and cross Odisha Coast between Gopalpur and Chandbali, to the south of Puri around 3<sup>rd</sup> May afternoon with maximum sustained wind of speed 175-185 kmph gusting to 205 kmph.**

Forecast track and intensity are given in the following table:

<b>Date/Time(IST)</b>	<b>Position (Lat. °N/ long. °E)</b>	<b>Maximum sustained surface wind speed (Kmph)</b>	<b>Category of cyclonic disturbance</b>
30.04.19/1430	13.0/85.3	155-165 gusting to 180	Very Severe Cyclonic Storm
30.04.19/1730	13.2/85.0	165-175 gusting to 195	Extremely Severe Cyclonic Storm
30.04.19/2330	13.5/84.7	170-180 gusting to 200	Extremely Severe Cyclonic Storm
01.05.19/0530	13.8/84.3	170-180 gusting to 200	Extremely Severe Cyclonic Storm
01.05.19/1130	14.4/84.0	175-185 gusting to 205	Extremely Severe Cyclonic Storm
01.05.19/2330	15.4/84.0	175-185 gusting to 205	Extremely Severe Cyclonic Storm
02.05.19/1130	16.7/84.2	175-185 gusting to 205	Extremely Severe Cyclonic Storm
02.05.19/2330	18.0/84.7	175-185 gusting to 205	Extremely Severe Cyclonic Storm
03.05.19/1130	19.2/85.3	175-185 gusting to 205	Extremely Severe Cyclonic Storm
03.05.19/2330	20.3/86.2	150-160 gusting to 175	Very Severe Cyclonic Storm
04.05.19/1130	21.4/87.3	125-135 gusting to 150	Very Severe Cyclonic Storm
04.05.19/2330	22.5/88.4	90-100 gusting to 110	Severe Cyclonic Storm
05.05.19/1130	23.5/89.6	50-60 gusting to 70	Deep Depression

**Spatial rainfall distribution: Isolated: <25%, A few: 26-50%, Many: 51-75%, Most: 76-100%**

**Rainfall amount (mm): Heavy rain: 64.5 – 115.5, Very heavy rain: 115.6 – 204.4, Extremely heavy rain: 204.5 or more.**

## **Warnings:**

### **(i) Heavy rainfall warning**

- **North Andhra Pradesh:** Light to moderate rainfall at many places with heavy to very heavy rainfall at isolated places very likely over north coastal Andhra Pradesh (Srikakulam and Vijayanagaram Districts) on 2<sup>nd</sup> May and rainfall at most places with heavy to very heavy rainfall at a few places on 3<sup>rd</sup> May.
- **Odisha:** Light to moderate rainfall at many places with heavy to very heavy rainfall at isolated places very likely over south coastal Odisha on 2<sup>nd</sup> May. It is likely to increase with rainfall at most places and heavy to very heavy rainfall at a few places with **extremely heavy falls (>20 cm)** at isolated places over coastal Odisha & its adjoining districts of interior Odisha on 3<sup>rd</sup> and over north Odisha on 4<sup>th</sup> May.
- **West Bengal:** Light to moderate rainfall at most places with heavy falls at isolated places very likely over coastal districts of West Bengal on 3<sup>rd</sup> and heavy to very heavy rainfall at a few places with **extremely heavy falls** at isolated places over Gangetic West Bengal on 4<sup>th</sup> May.

### **(ii) Wind warning**

- Gale wind speed reaching 155-165 kmph gusting to 180 kmph is prevailing over Southwest and adjoining westcentral & Southeast Bay of Bengal. It is very likely to increase gradually becoming 175-185 kmph gusting to 205 kmph over Westcentral & adjoining Southwest Bay of Bengal off north Tamilnadu, Puducherry and south Andhra Pradesh Coast from 1<sup>st</sup> May morning onwards.
- Strong wind speed reaching 30-40 kmph gusting to 50 kmph very likely along & off Tamilnadu & Puducherry coast, Comorin area, Gulf of Mannar and Kerala on 30<sup>th</sup>.
- Squally wind speed reaching 40-50 kmph gusting to 60 kmph is very likely to commence along & off north Andhra Pradesh & Odisha Coasts from 2<sup>nd</sup> May and very likely to become gale wind speed reaching 60-70 kmph gusting to 85 kmph from 3<sup>rd</sup> May morning and become 175-185 kmph gusting 205 kmph over Odisha Coast and 90-100 kmph gusting to 115 kmph over adjoining districts of north Andhra Pradesh by 3<sup>rd</sup> May evening.
- Squally wind speed reaching 40-50 kmph gusting to 60 kmph is very likely along & off West Bengal coast on 2<sup>nd</sup> May. It would become gale wind speed reaching 60-70 kmph gusting to 85 kmph from 3<sup>rd</sup> May evening and become 90-100 kmph gusting to 115 kmph from 4<sup>th</sup> May morning.

### **(iii) Sea condition**

- The sea condition is phenomenal over Southwest Bay and adjoining Southeast & westcentral Bay of Bengal, off north Tamilnadu, Puducherry and south Andhra Pradesh Coasts. It is very likely to be phenomenal over westcentral Bay of Bengal during 1-3 May 2019 and over Northwest Bay of Bengal during 2-4 May.
- Sea conditions very likely to be very rough to high along & off north Andhra Pradesh Coasts during 1-3 May and high to phenomenal along & off Odisha and West Bengal Coasts during 2-4 May.

### **(iv) Storm surge Warning**

- Storm surge of about 1.5 meter height above astronomical tide is very likely to inundate low lying areas of Ganjam, Khurda, Puri & Jagatsinghpur Districts of Odisha at the time of landfall.

### **(v) Fishermen Warning**

- The fishermen are advised not to venture into deep sea areas of Southwest & adjoining southeast Bay of Bengal on 30<sup>th</sup> April; Southwest & adjoining westcentral Bay of Bengal, along & off Puducherry, north Tamilnadu & south Andhra Pradesh coasts till 1<sup>st</sup> May; westcentral Bay of Bengal, along & off north Andhra Pradesh Coast during 1-3 May 2019

**Spatial rainfall distribution: Isolated: <25%, A few: 26-50%, Many: 51-75%, Most: 76-100%**

**Rainfall amount (mm): Heavy rain: 64.5 – 115.5, Very heavy rain: 115.6 – 204.4, Extremely heavy rain: 204.5 or more.**

and northwest & adjoining Westcentral Bay of Bengal along & off Odisha and West Bengal coasts from 2-4 May.

- Those, who are out in deep sea above areas are advised to return to the coasts.

**(vi) (a) Damage Expected and Action suggested for Ganjam, Gajapati, Khurda, Puri, Jagatsinghpur districts of Odisha.**

(i) Extensive damage to all types of kutcha houses, some damage to old badly managed Pucca structures. Potential threat from flying objects. (ii) Extensive uprooting of communication and power poles. (iii) Disruption of rail/road link at several places. (iv) Extensive damage to standing crops, plantations, orchards. (v) Blowing down of Palm and coconut trees. (vi) Uprooting of large bushy trees. (vii) Large boats and ships may get torn from their moorings.

**Action Suggested:**

(i) Total suspension of fishing operations. (ii) Extensive evacuation from coastal areas. (iii) Diversion or suspension of rail and road traffic. (iv) People in affected areas to remain indoors. (v) Movement in motor boats and small ships not advisable.

**(b) Damage Expected and action suggested for Kendrapara, Bhadrak, Jajpur, Balasore districts of Odisha and east & west Medinipur, south & north 24 Parganas, Howrah, Hoogli, Kolkata districts of West Bengal and Srikakulam and Vijayanagaram districts of Andhra Pradesh**

(i) Total destruction of thatched houses/ extensive damage to kutcha houses. Some damage to pucca houses. Potential threat from flying objects. (ii) Bending/ uprooting of power and communication poles. (iii) Major damage to Kutcha and Pucca roads. Flooding of escape routes. Minor disruption of railways, overhead powerlines and signalling systems. (iv) Widespread damage to standing crops, plantations, orchards, falling of green coconuts and tearing of palm fronds. Blowing down of bushy trees like mango. (v) Small boats, country crafts may get detached from moorings. (vi) Visibility severely affected..

**Action Suggested:**

(i) Total suspension of fishing operations. Mobilise evacuation from coastal areas. (ii) Judicious regulation of rail and road traffic. (iii) People in affected areas to remain indoors. (iv) Movement in motor boats and small ships unsafe.

*The next bulletin will be issued at 2030 hrs IST of 30<sup>th</sup> April, 2019.*

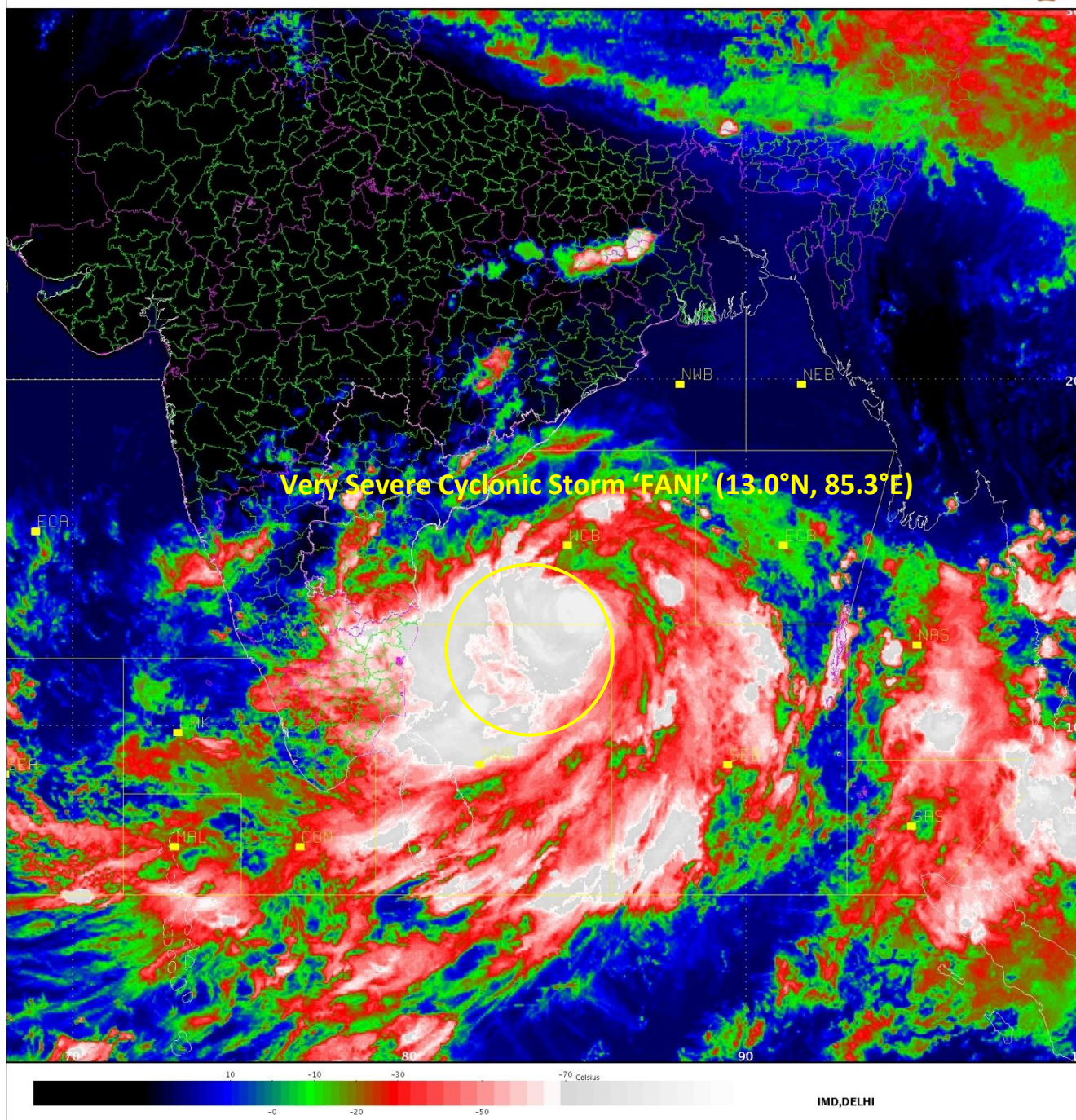
**(Naresh Kumar)**  
**Scientist-E, RSMC, New Delhi**

*Copy to: CRS, Pune/ ACWC Kolkata/ Chennai/ CWC Bhubaneswar/CWC Visakhapatnam*

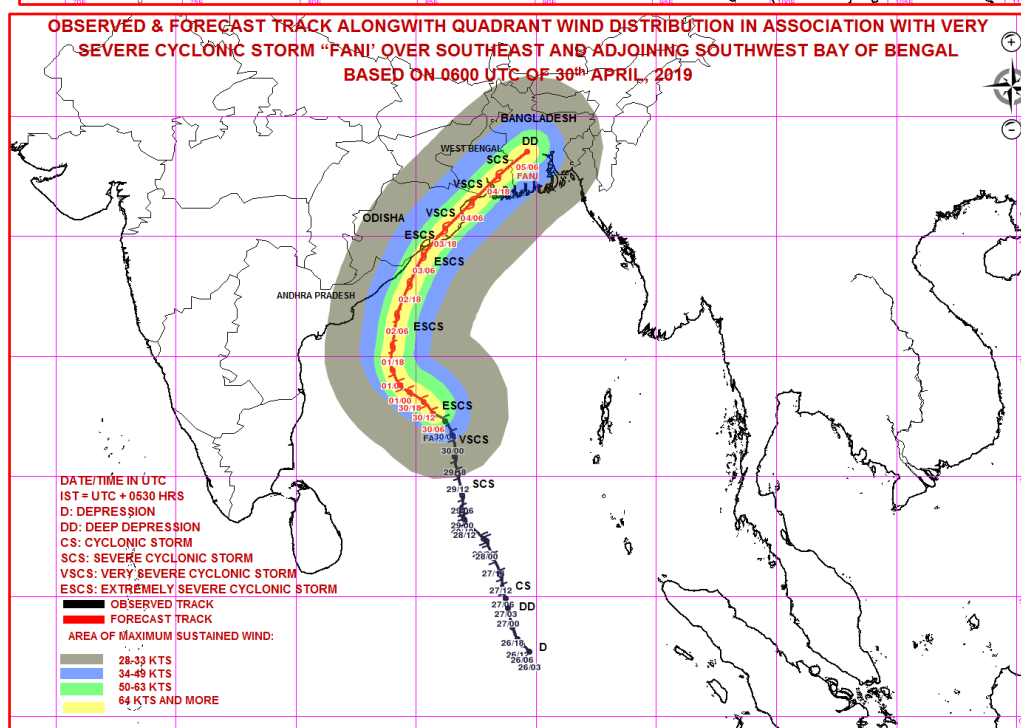
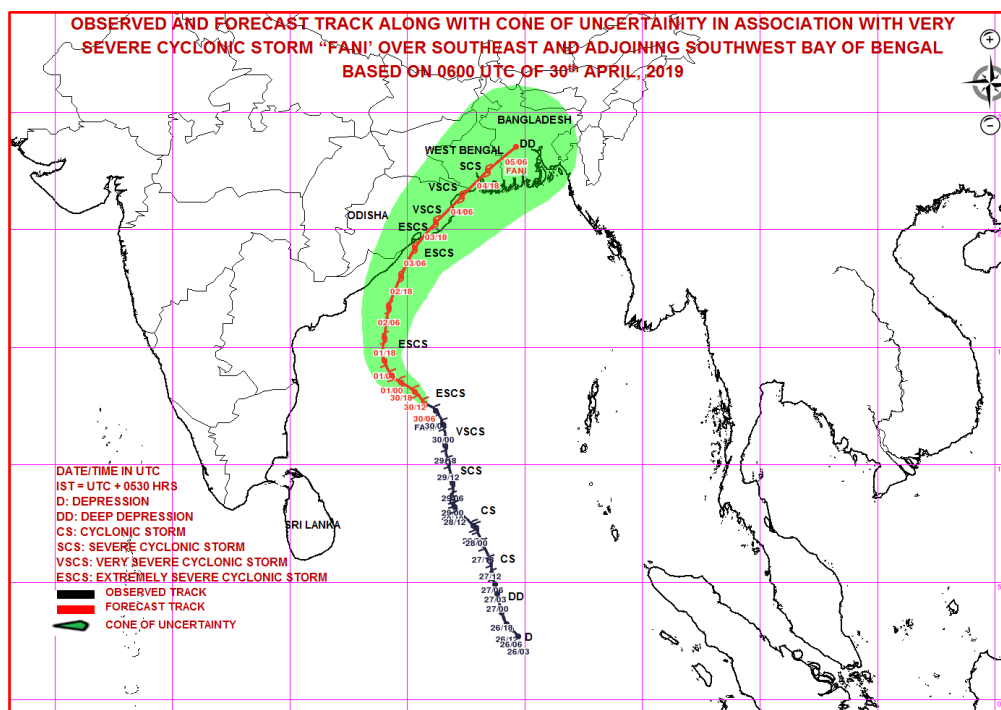


SAT :INSAT-3D  
IMG\_TIR1\_TEMP 10.8 um  
SECTOR BAYOFBENGAL Mercator (NHC LUT)

30-04-2019/10:30 GMT  
30-04-2019/16:00 IST



Spatial rainfall distribution: Isolated: <25%, A few: 26-50%, Many: 51-75%, Most: 76-100%  
Rainfall amount (mm): Heavy rain: 64.5 – 115.5, Very heavy rain: 115.6 – 204.4, Extremely heavy rain: 204.5 or more.



MSW(knot)/kmph)	Impact	Action
28-33/(51-62)	Very rough seas.	Total suspension of fishing operations
34-49/(63-91)	High to very high seas	Total suspension of fishing operations
50-63/(92-117)	Very High seas	Total suspension of fishing operations
≥ 64 (≥118)	Phenomenal	Total suspension of fishing operations

**Spatial rainfall distribution:** Isolated: <25%, A few: 26-50%, Many: 51-75%, Most: 76-100%  
**Rainfall amount (mm):** Heavy rain: 64.5 – 115.5, Very heavy rain: 115.6 – 204.4, Extremely heavy rain: 204.5 or more.