



**India Meteorological Department  
Earth System Science Organisation  
(Ministry of Earth Sciences)**

**BULLETIN NO. : 08 (BOB/09/2018)**

**TIME OF ISSUE: 1600 HOURS IST**

**DATED: 11.11.2018**

**FROM: INDIA METEOROLOGICAL DEPARTMENT (FAX NO. 24643965/24699216/24623220)**

**TO: CONTROL ROOM, NDM, MINISTRY OF HOME AFFAIRS (FAX.NO. 23093750)**

**CONTROL ROOM NDMA (FAX.NO. 26701729)**

**CABINET SECRETARIAT (FAX.NO.23012284, 23018638)**

**PS TO HON'BLE MINISTER FOR S & T AND EARTH SCIENCES (FAX NO.23316745)**

**SECRETARY, MOES, (FAX NO. 24629777)**

**H.Q. (INTEGRATED DEFENCE STAFF AND CDS) (FAX NO. 23005137/23005147)**

**DIRECTOR GENERAL, DOORDARSHAN (23385843)**

**DIRECTOR GENERAL, AIR (23421105, 23421219)**

**PIB MOES (FAX NO. 23389042)**

**UNI (FAX NO. 23355841)**

**D.G. NATIONAL DISASTER RESPONSE FORCE (NDRF) (FAX NO. 26105912)**

**DIRECTOR, PUNCTUALITY, INDIAN RAILWAYS (FAX NO. 23388503)**

**CHIEF SECRETARY, GOVT. OF ODISHA (FAX NO. 0674 -2536660)**

**CHIEF SECRETARY, ANDHRA PRADESH (FAX NO. 0866-2441029)**

**CHIEF SECRETARY, TAMIL NADU (FAX NO. 044-25672304)**

**CHIEF SECRETARY, ANDAMAN & NICOBAR ISLANDS (FAX NO. 03192- 232656)**

**CHIEF SECRETARY, WEST BENGAL (FAX NO. 033-22144328)**

**CHIEF SECRETARY, PUDUCHERRY (FAX NO. 0413-2337575)**

**Sub: Cyclonic storm 'GAJA' over Westcentral and adjoining Eastcentral & Southeast Bay of Bengal**

**Cyclone Alert for north Tamil Nadu, Puducherry & adjoining south Andhra Pradesh coasts: Yellow Message**

The Cyclonic storm 'GAJA' over Westcentral and adjoining Eastcentral & Southeast Bay of Bengal moved westwards with a speed of 12 kmph during past 06 hours and lay centred at 1430 hrs IST of today, the 11<sup>th</sup> November, 2018 over Westcentral and adjoining Eastcentral & Southeast Bay of Bengal near latitude 13.5°N and longitude 88.2°E, about 860 km east-northeast of Chennai (Tamil Nadu) and 900 km east-southeast of Sriharikota (Andhra Pradesh). It is very likely to intensify further into a Severe Cyclonic Storm during next 24 hours. It is very likely to move west-northwestwards during next 36 hours and then west-southwestwards towards north Tamil Nadu – south Andhra Pradesh coasts during the subsequent 48 hours. However, while moving west-southwestwards, it is likely to weaken gradually and cross north Tamil Nadu – south Andhra Pradesh coasts between Cuddalore (Tamil Nadu) and Sriharikota as a Cyclonic Storm during 15<sup>th</sup> November forenoon.

Forecast track and intensity are given in the following table:

| <b>Date/Time(IST)</b> | <b>Position<br/>(Lat. °N/ long. °E)</b> | <b>Maximum sustained surface<br/>wind speed (Kmph)</b> | <b>Category of cyclonic<br/>disturbance</b> |
|-----------------------|---|--|---|
| 11.11.18/1430         | 13.5/88.2                               | 65-75 gusting to 85                                    | Cyclonic Storm                              |
| 11.11.18/1730         | 13.6/88.0                               | 70-80 gusting to 90                                    | Cyclonic Storm                              |
| 11.11.18/2330         | 13.7/87.7                               | 75-85 gusting to 95                                    | Cyclonic Storm                              |
| 12.11.18/0530         | 13.8/87.3                               | 80-90 gusting to 100                                   | Cyclonic Storm                              |
| 12.11.18/1130         | 13.9/86.9                               | 90-100 gusting to 115                                  | Severe Cyclonic Storm                       |
| 12.11.18/2330         | 14.1/86.1                               | 95-105 gusting to 120                                  | Severe Cyclonic Storm                       |
| 13.11.18/1130         | 14.2/85.3                               | 100-110 gusting to 125                                 | Severe Cyclonic Storm                       |
| 13.11.18/2330         | 14.2/84.5                               | 100-110 gusting to 125                                 | Severe Cyclonic Storm                       |
| 14.11.18/1130         | 13.9/83.4                               | 95-105 gusting to 120                                  | Severe Cyclonic Storm                       |
| 14.11.18/2330         | 13.4/82.1                               | 90-100 gusting to 115                                  | Severe Cyclonic Storm                       |
| 15.11.18/1130         | 12.6/80.2                               | 80-90 gusting to 100                                   | Cyclonic Storm                              |
| 15.11.18/2330         | 11.8/78.5                               | 50-60 gusting to 70                                    | Deep Depression                             |

**Spatial rainfall distribution: Isolated: <25%, A few: 26-50%, Many: 51-75%, Most: 76-100%**

**Rainfall amount (mm): Heavy rain: 64.5 – 115.5, Very heavy rain: 115.6 – 204.4, Extremely heavy rain: 204.5 or more.**

## Warnings:

### (i) Heavy rainfall warning

- Rainfall at most places with heavy falls at isolated places very likely to commence over north coastal Tamil Nadu and adjoining south coastal Andhra Pradesh from evening of 14<sup>th</sup> November. Rainfall intensity is very likely to increase gradually thereafter with rainfall at most places and heavy to very heavy at a few places and **extremely heavy falls ( $\geq 20$  cm)** at isolated places very likely over north Tamil Nadu and at most places with heavy to very heavy falls at isolated places very likely over south Tamil Nadu, south Coastal Andhra Pradesh and Rayalaseema on 15<sup>th</sup> November.
- Rainfall at most places with heavy rainfall at isolated places likely over Andaman Islands on 11<sup>th</sup> November 2018 and decrease thereafter.

### (ii) Wind warning

- Squally wind speed reaching 45-55 kmph gusting to 65 kmph very likely over and around Andaman Islands and north Andaman Sea during next 12 hours.
- Gale wind speed reaching 65-75 kmph gusting to 85 kmph prevails over Eastcentral and adjoining Westcentral & Southeast Bay of Bengal. It is very likely to increase gradually becoming 90-100 kmph gusting to 110 kmph over west central & adjoining southwest Bay of Bengal from morning of 12<sup>th</sup> November 2018.
- Squally wind speed reaching 45-55 kmph gusting to 65 kmph likely to commence along & off north Tamil Nadu – south Andhra Pradesh coasts from 14<sup>th</sup> November morning. It is very likely to increase gradually becoming Gale wind speed 80-90 kmph gusting to 100 kmph along & off north Tamil Nadu – south Andhra Pradesh coasts over west central & adjoining southwest Bay of Bengal from 14<sup>th</sup> November mid-night onwards.

### (iii) Sea condition

The sea condition is rough to very rough over north Andaman Sea. It is high over Eastcentral and adjoining Westcentral & Southeast Bay of Bengal. It will become 'very high' over west central and adjoining southwest Bay of Bengal on 12<sup>th</sup> and over southwest and adjoining Westcentral Bay of Bengal during 13-14 November and high over the same area on 15<sup>th</sup>. The sea condition is very likely to be rough to very rough along and off Tamil Nadu -south Andhra Pradesh coasts from 14<sup>th</sup> November morning and high from 14<sup>th</sup> November mid-night.

### (iv) Fishermen Warning

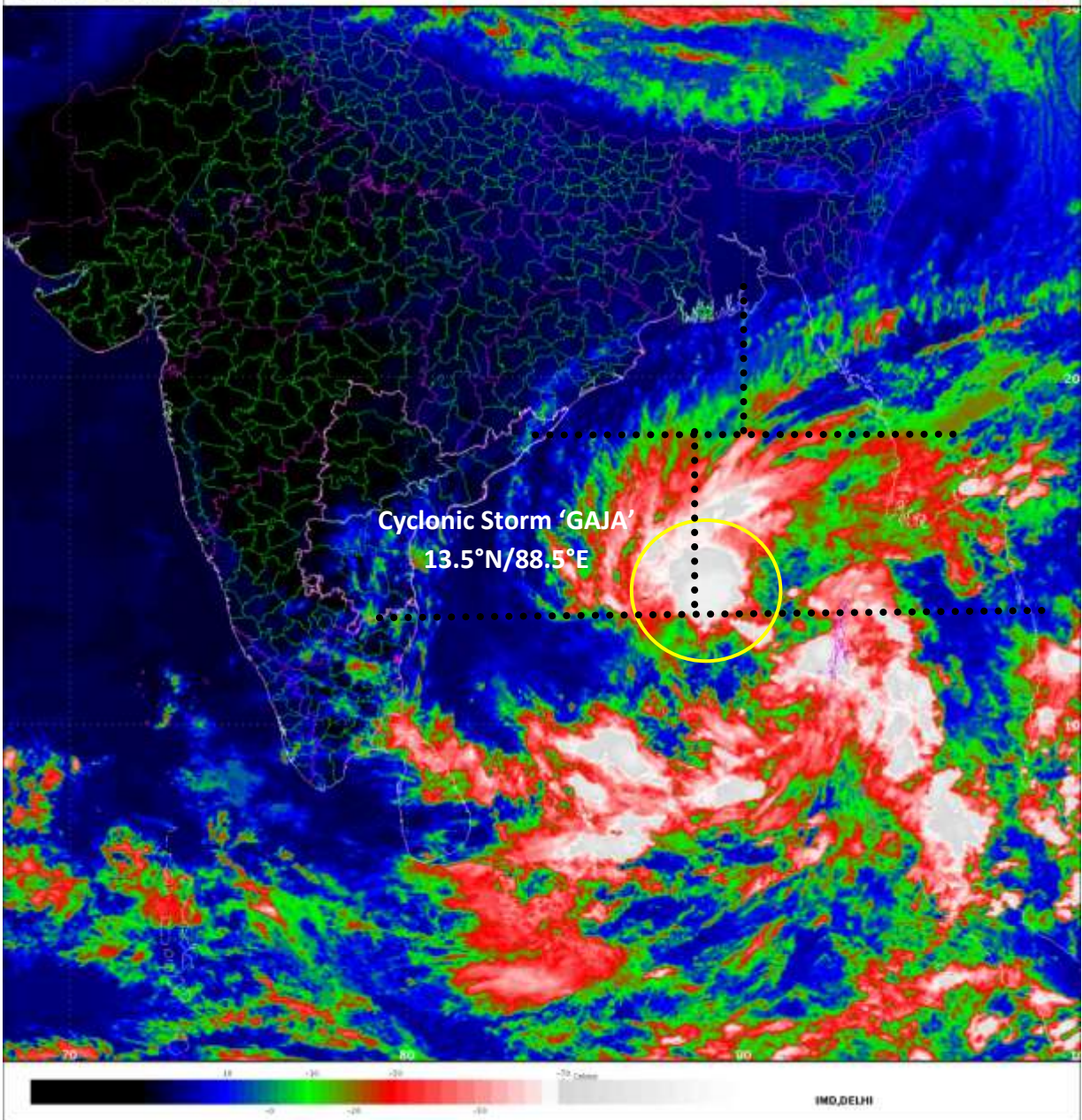
- The fishermen are advised not to venture into Andaman Sea during next 12 hours, over central and adjoining southeast Bay of Bengal during 11<sup>th</sup> – 13<sup>th</sup> and over southwest and adjoining westcentral Bay of Bengal from 12<sup>th</sup> November onwards.
- The fishermen, who are in deep Sea are advised to return to coasts by tomorrow, 12<sup>th</sup> November, 2018.

*The next bulletin will be issued at 2030 hrs IST of 11<sup>th</sup> November, 2018.*

**(Naresh Kumar)**  
**Scientist-E, RSMC, New Delhi**

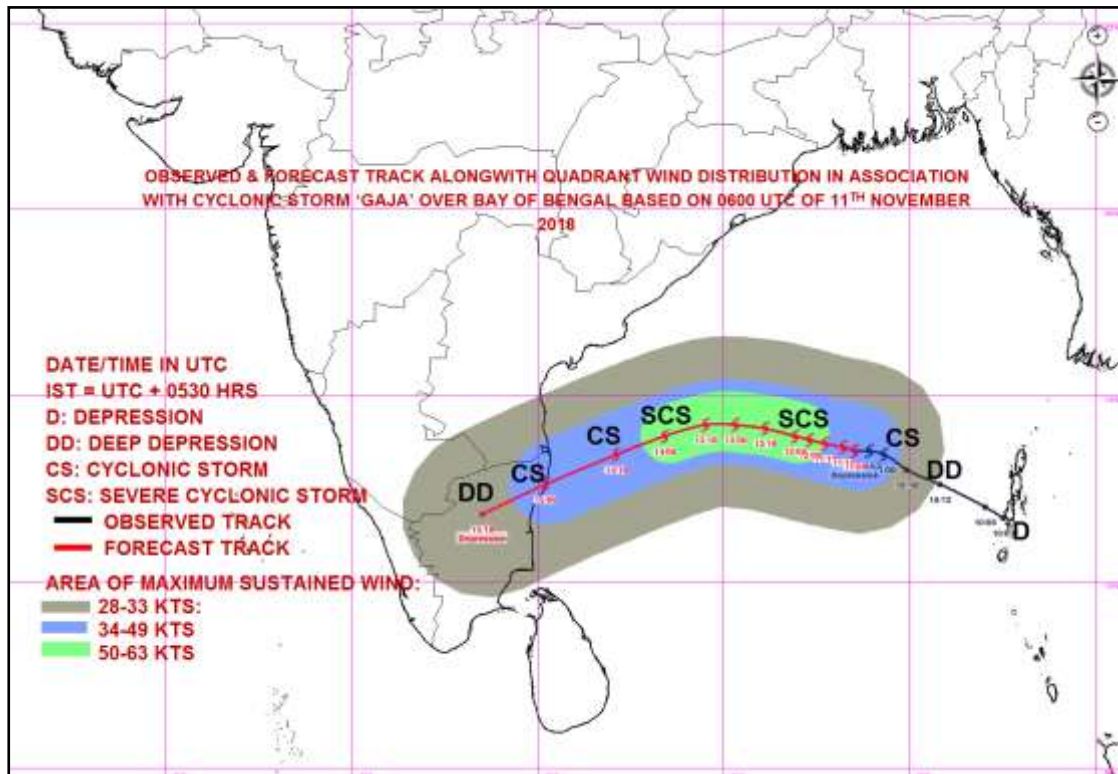
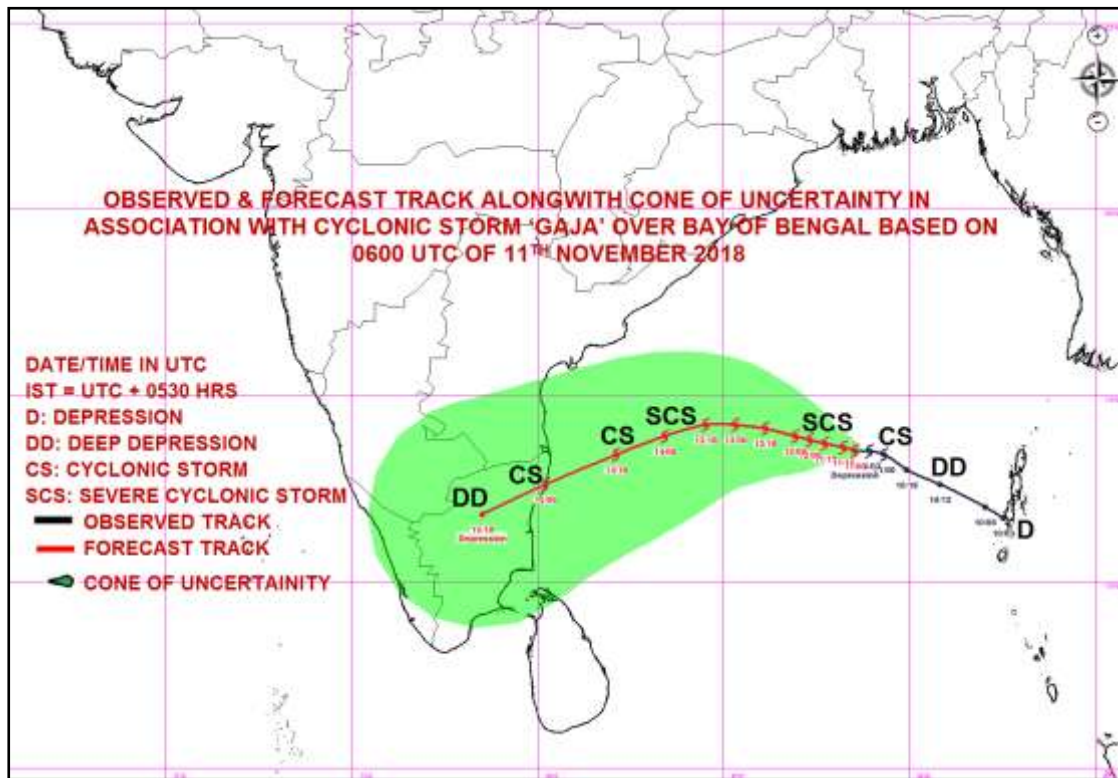
Copy to: CRS, Pune/ ACWC Kolkata/ Chennai/ CWC Bhubaneswar/CWC  
Thiruvananthapuram/Visakhapatnam

**Spatial rainfall distribution: Isolated: <25%, A few: 26-50%, Many: 51-75%, Most: 76-100%**  
**Rainfall amount (mm): Heavy rain: 64.5 – 115.5, Very heavy rain: 115.6 – 204.4, Extremely heavy rain: 204.5 or more.**



**Spatial rainfall distribution: Isolated: <25%, A few: 26-50%, Many: 51-75%, Most: 76-100%**  
**Rainfall amount (mm): Heavy rain: 64.5 – 115.5, Very heavy rain: 115.6 – 204.4, Extremely heavy rain: 204.5 or more.**





**Spatial rainfall distribution: Isolated: <25%, A few: 26-50%, Many: 51-75%, Most: 76-100%**  
**Rainfall amount (mm): Heavy rain: 64.5 – 115.5, Very heavy rain: 115.6 – 204.4, Extremely heavy rain: 204.5 or more.**