



India Meteorological Department  
Earth System Science Organisation  
(Ministry of Earth Sciences)

BULLETIN NO. : 02 (BOB/05/2018)

TIME OF ISSUE: 1400 HOURS IST

DATED: 15.08.2018

FROM: INDIA METEOROLOGICAL DEPARTMENT (FAX NO. 24643965/24699216/24623220)

TO: CONTROL ROOM, NDM, MINISTRY OF HOME AFFAIRS (FAX.NO. 23093750)

CONTROL ROOM NDMA (FAX.NO. 26701729)

CABINET SECRETARIAT (FAX.NO.23012284, 23018638)

PS TO HON'BLE MINISTER FOR S & T AND EARTH SCIENCES (FAX NO.23316745)

SECRETARY, MOES, (FAX NO. 24629777)

H.Q. (INTEGRATED DEFENCE STAFF AND CDS) (FAX NO. 23005137/23005147)

DIRECTOR GENERAL, DOORDARSHAN (23385843)

DIRECTOR GENERAL, AIR (23421105, 23421219)

PIB MOES (FAX NO. 23389042)

UNI (FAX NO. 23355841)

D.G. NATIONAL DISASTER RESPONSE FORCE (NDRF) (FAX NO. 26105912)

DIRECTOR, PUNCTUALITY, INDIAN RAILWAYS (FAX NO. 23388503)

CHIEF SECRETARY, GOVT. OF ODISHA (FAX NO. 0674 -2536660)

CHIEF SECRETARY, CHHATTISGARH (FAX NO. 0771-2221206)

CHIEF SECRETARY, MADHYA PRADESH (FAX NO. 0755 -2551521)

CHIEF SECRETARY, WEST BENGAL (FAX NO. 033-22144328)

CHIEF SECRETARY, JHARKHAND (FAX NO. 0651-2400255)

CHIEF SECRETARY, MAHARASHTRA (FAX NO. 022- 22028594)

CHIEF SECRETARY, GUJARAT (FAX NO. 079-23250305)

CHIEF SECRETARY, RAJASTHAN (FAX NO.0141-2227114)

CHIEF SECRETARY, ANDHRA PRADESH (FAX NO. 0866-2441029)

CHIEF SECRETARY, TELANGANA (FAX NO. 040- 23452620)

**Sub: Depression over Odisha**

The Depression over coastal Odisha moved west-northwestwards with a speed of 15 kmph during past 03 hours and lay centered at 1130 hrs IST of today, the 15th August, 2018 over Odisha near latitude 20.1°N and longitude 85.6°E, about 30 km southwest of Bhubaneswar (42971). It is very likely to move west-northwestwards during next 24 hours.

**Warning**

**(a) Rainfall:**

- Rainfall at most places with heavy to very heavy rain at a few places and extremely heavy falls at isolated places is very likely over south Odisha, south Chhattisgarh & north Telangana and heavy to very rain at isolated places over north coastal Andhra Pradesh during next 24 hrs and isolated heavy to very falls over these regions during subsequent 24 hrs.
- Gujarat region is likely to receive heavy to very heavy rain at a few places and extremely heavy falls at isolated places on 17<sup>th</sup> and heavy rain at a few places with very heavy rain at isolated places on 18<sup>th</sup> August. Saurashtra and Kutch is likely to receive heavy to very heavy rain at isolated places on 17<sup>th</sup> and 18<sup>th</sup>.
- Rainfall at most places with heavy to very heavy rainfall at isolated places likely over east Vidarbha and east Madhya Pradesh during next 24 hrs. Rainfall at most places with heavy to very heavy rainfall at a few places is likely over Vidarbha and isolated heavy to very heavy rainfall likely over south Madhya Pradesh, north Madhya Maharashtra and north Konkan during subsequent 24 hrs.

**(b) Wind Warning:**

Squally wind speed reaching 40-50 kmph gusting to 60 kmph is very likely over Northwest Bay of Bengal and along & off Odisha and adjoining north Andhra Pradesh coasts during next 24 hrs.

**Spatial rainfall distribution: Isolated: <25%, A few: 26-50%, Many: 51-75%, Most: 76-100%**

**Rainfall amount (mm): Heavy rain: 64.5 – 115.5, Very heavy rain: 115.6 – 204.4, Extremely heavy rain: 204.5 or more.**

**(c) Sea condition:**

Sea condition will be rough to very rough over Northwest Bay of Bengal and along and off Odisha and adjoining north Andhra Pradesh coasts during the next 24 hrs.

**(d) Fishermen warning:**

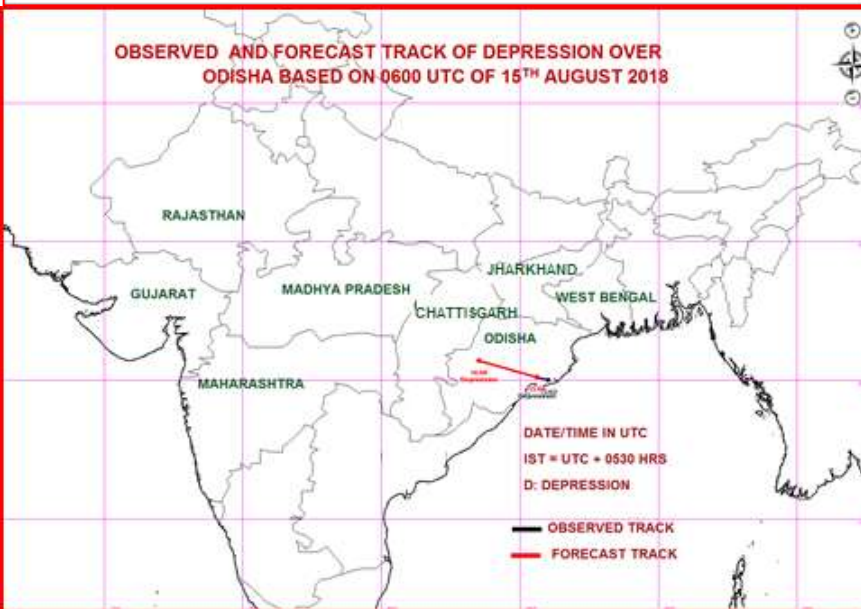
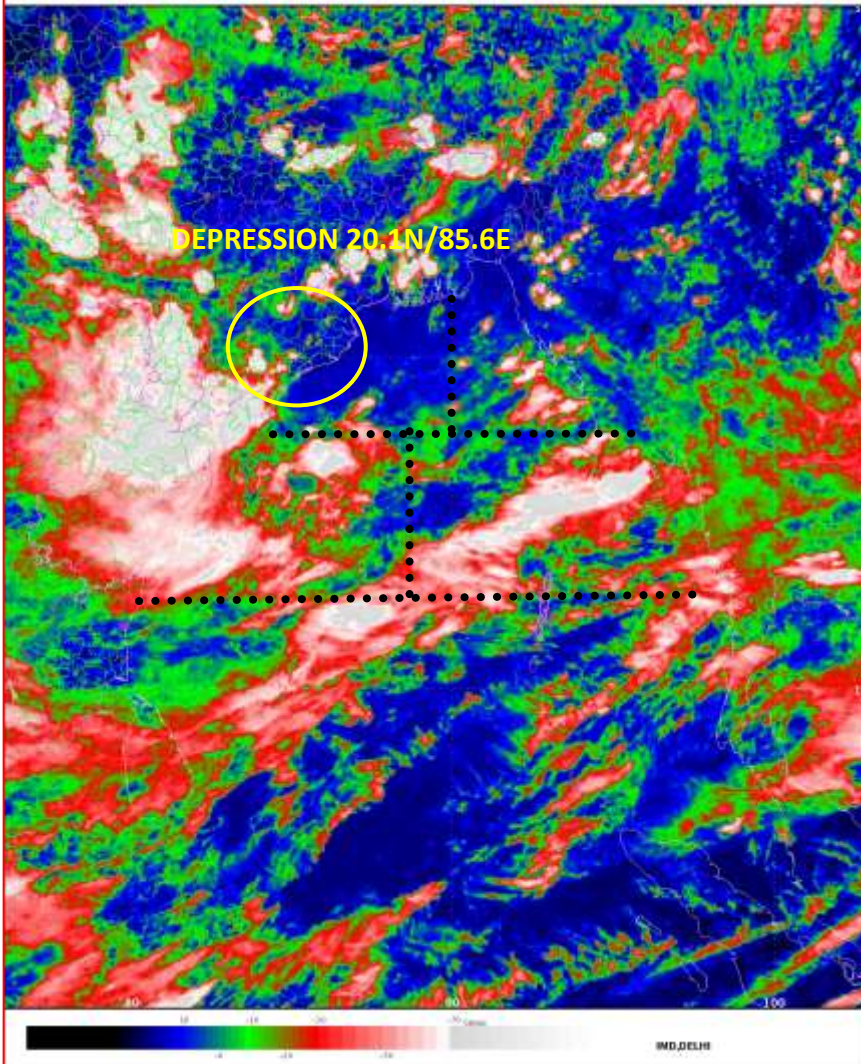
Fishermen are advised not to venture into Northwest Bay of Bengal and along and off Odisha and adjoining north Andhra Pradesh coast during next 24 hrs.

*The next bulletin will be issued at 2030 hrs IST of 15<sup>th</sup> August, 2018.*

**(Sunitha Devi)**

**Scientist-E, RSMC, New Delhi**

*Copy to: CRS, Pune/ ACWC Kolkata/ Mumbai/Chennai/CWC Bhubaneswar/Ahmedabad/MC Raipur/Bhopal/Jaipur/Hyderabad*



Spatial rainfall distribution: Isolated: <25%, A few: 26-50%, Many: 51-75%, Most: 76-100%  
 Rainfall amount (mm): Heavy rain: 64.5 – 115.5, Very heavy rain: 115.6 – 204.4, Extremely heavy rain: 204.5 or more.