



India Meteorological Department
Earth System Science Organisation
(Ministry of Earth Sciences)

BULLETIN NO. : 01 (BOB 01/2018)

TIME OF ISSUE: 1500 HOURS IST

DATED: 29.05.2018

FROM: INDIA METEOROLOGICAL DEPARTMENT (FAX NO. 24643965/24699216/24623220)
TO: CONTROL ROOM, NDM, MINISTRY OF HOME AFFAIRS (FAX.NO. 23093750)
CONTROL ROOM NDMA (FAX.NO. 26701729)
CABINET SECRETARIAT (FAX.NO.23012284, 23018638)
PS TO HON'BLE MINISTER FOR S & T AND EARTH SCIENCES (FAX NO.23316745)
SECRETARY, MOES, (FAX NO. 24629777)
H.Q. (INTEGRATED DEFENCE STAFF AND CDS) (FAX NO. 23005137/23005147)
DIRECTOR GENERAL, DOORDARSHAN (23385843)
DIRECTOR GENERAL, AIR (23421105, 23421219)
PIB MOES (FAX NO. 23389042)
UNI (FAX NO. 23355841)
D.G. NATIONAL DISASTER RESPONSE FORCE (NDRF) (FAX NO. 24363261)
DIRECTOR, PUNCTUALITY, INDIAN RAILWAYS (FAX NO. 23388503)
CHIEF SECRETARY, TAMILNADU (FAX NO. 044-25672304)
CHIEF SECRETARY, ANDHRA PRADESH (FAX NO. 0863-2441029)
CHIEF SECRETARY, ODISHA (FAX NO. 0674 -2536660)
CHIEF SECRETARY, WEST BENGAL (FAX NO. 033-22144328)
CHIEF SECRETARY, ANDAMAN & NICOBAR ISLANDS (FAX No. 03192-232656)
CHIEF SECRETARY, ASSAM (FAX NO. 0361-2237200)
CHIEF SECRETARY, MEGHALAYA (FAX NO. 0364 -2225978)
CHIEF SECRETARY, NAGALAND (FAX NO. 0370 -2270057)
CHIEF SECRETARY, MANIPUR (FAX NO. 0385 2452629)
CHIEF SECRETARY, MIZORAM (FAX NO. 0389 -2322745)
CHIEF SECRETARY, TRIPURA (FAX NO. 0381-2414013)

Sub: Depression over northeast and adjoining eastcentral Bay of Bengal

Latest observations and satellite imageries indicate that the Well Marked Low Pressure Area (WML) over eastcentral and adjoining northeast Bay of Bengal (BoB) has concentrated into a depression and lay centred at 1130 hrs IST of today, the 29th May 2018 over northeast and adjoining eastcentral BoB near latitude 18.5^oN and longitude 92.2^oE, about 170 km west-southwest of Kyaukpyu (Myanmar) and 190 km south-southwest of Sittwe (Myanmar). It is very likely to intensify further into a deep depression during next 6 hrs. It is very likely to move north-northeastwards and cross Myanmar and adjoining Bangladesh coasts between Kyaukpyu and Teknaf (Bangladesh) close to Sittwe around night of today, the 29th May 2018.

Warning:

(i) Rainfall Warning:

Rainfall at most places with heavy to very heavy rainfall at isolated places is very likely over Nagaland, Manipur, Mizoram, Tripura and south Assam on 30th & 31st May, 2018.

(ii) Wind Warning:

Squally winds speed reaching 45-55 kmph gusting to 65 kmph very likely over northeast and adjoining eastcentral BoB along & off Bangladesh-Myanmar coasts during next 24 hours.

(iii) Sea Condition:

Sea condition will be rough to very rough northeast and adjoining eastcentral BoB along & off Bangladesh-Myanmar coasts during next 24 hours.

(iv) Fishermen Warning:

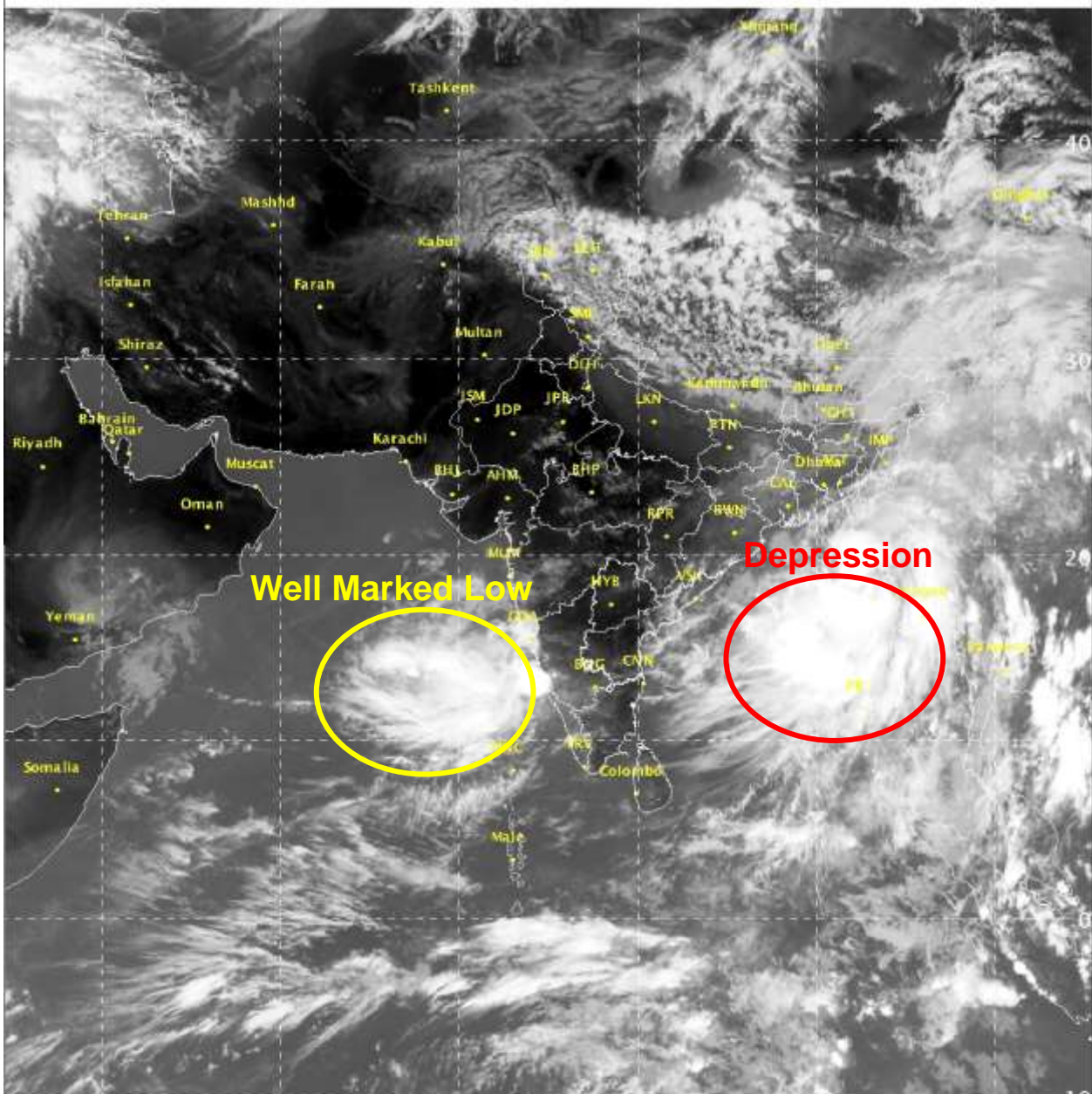
Fishermen are advised not to venture into northeast and adjoining eastcentral BoB during next 24 hours.

The next bulletin will be issued at 2030 hrs IST of 29th May 2018.

(Neetha Gopal)
Scientist-E, RSMC, New Delhi

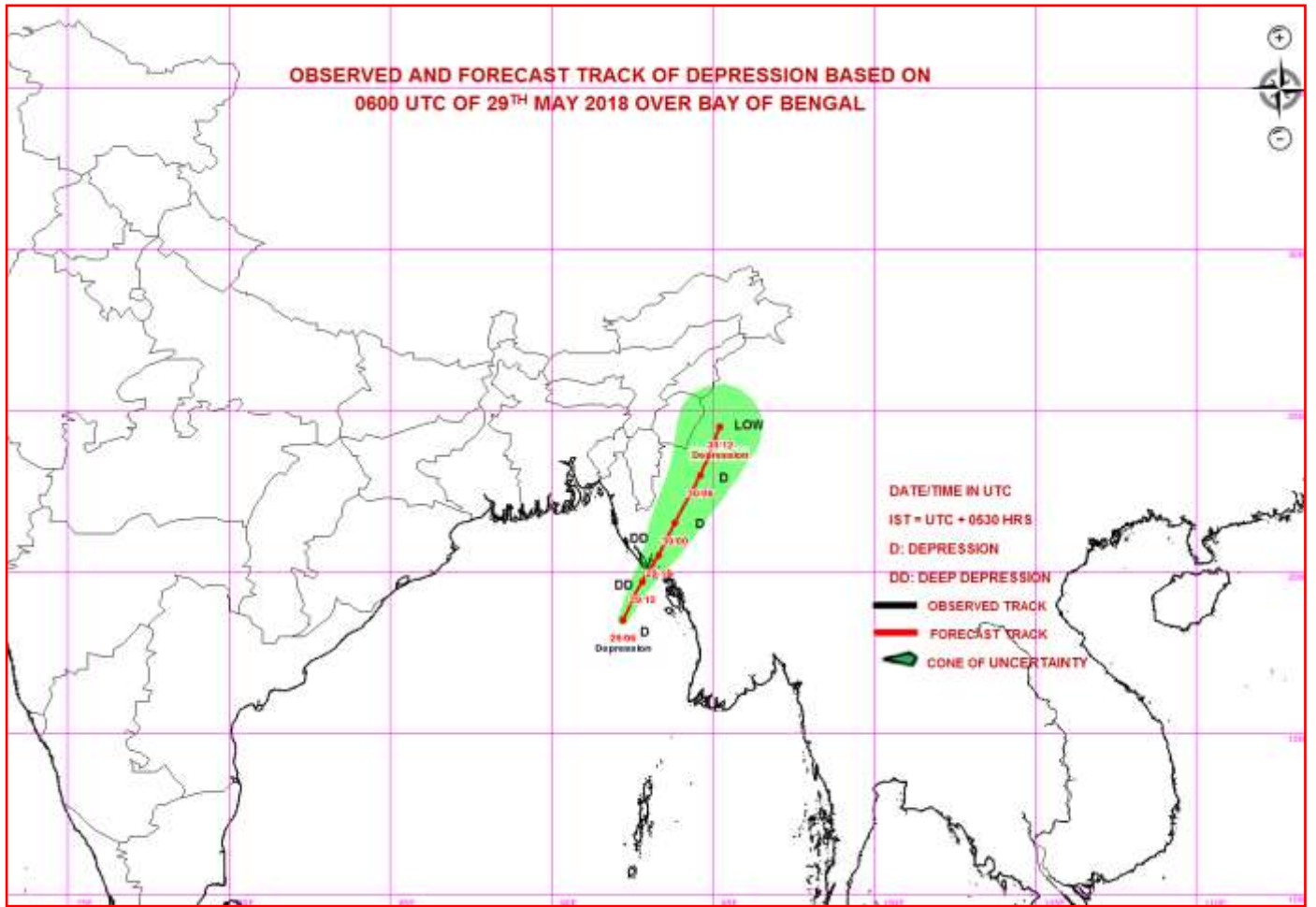
Copy to: CRS Pune/ACWC Chennai/Kolkata/CWC Visakhapatnam/Bhubaneswar/RMC Guwahati/ MC
Tripura/Shillong/Gangtok

Spatial rainfall distribution: Isolated: <25%, A few: 26-50%, Many: 51-75%, Most: 76-100%
Rainfall amount (mm): Heavy rain: 64.5 – 115.5, Very heavy rain: 115.6 – 204.4, Extremely heavy rain: 204.5 or more.



IMD/Delhi

Spatial rainfall distribution: Isolated: <25%, A few: 26-50%, Many: 51-75%, Most: 76-100%
Rainfall amount (mm): Heavy rain: 64.5 – 115.5, Very heavy rain: 115.6 – 204.4, Extremely heavy rain: 204.5 or more.



Spatial rainfall distribution: Isolated: <25%, A few: 26-50%, Many: 51-75%, Most: 76-100%
Rainfall amount (mm): Heavy rain: 64.5 – 115.5, Very heavy rain: 115.6 – 204.4, Extremely heavy rain: 204.5 or more.