



**India Meteorological Department
Earth System Science Organisation
(Ministry of Earth Sciences)**

BULLETIN NO. : 05 (ARB 02/2018)

TIME OF ISSUE: 1430 HOURS IST

DATED: 17.05.2018

FROM: INDIA METEOROLOGICAL DEPARTMENT (FAX NO. 24643965/24699216/24623220)

**TO: CONTROL ROOM, NDM, MINISTRY OF HOME AFFAIRS (FAX.NO. 23093750)
CONTROL ROOM NDMA (FAX.NO. 26701729)
CABINET SECRETARIAT (FAX.NO.23012284, 23018638)
PS TO HON'BLE MINISTER FOR S & T AND EARTH SCIENCES (FAX NO.23316745)
SECRETARY, MOES, (FAX NO. 24629777)
H.Q. (INTEGRATED DEFENCE STAFF AND CDS) (FAX NO. 23005137/23005147)
DIRECTOR GENERAL, DOORDARSHAN (23385843)
DIRECTOR GENERAL, AIR (23421105, 23421219)
PIB MOES (FAX NO. 23389042)
UNI (FAX NO. 23355841)
D.G. NATIONAL DISASTER RESPONSE FORCE (NDRF) (FAX NO. 26105912)
DIRECTOR, PUNCTUALITY, INDIAN RAILWAYS (FAX NO. 23388503)
CHIEF SECRETARY, TAMILNADU (FAX NO. 044-25672304)
CHIEF SECRETARY, KERALA (FAX NO. 0471-2327176)
ADMINISTRATOR, LAKSHADWEEP ISLANDS (FAX NO. 04896-262184)
ADMINISTRATOR, UNION TERRITORY OF DAMAN & DIU AND DADRA NAGAR HAVELI (0260-2230775)
CHIEF SECRETARY, KARNATAKA (FAX NO. 080-22258913)
CHIEF SECRETARY, GOA (FAX NO. 0832-2415201)
CHIEF SECRETARY, MAHARASHTRA (FAX NO. 022- 22028594)
CHIEF SECRETARY, GUJARAT (FAX NO. 079-23250305)**

Sub: Cyclonic Storm "SAGAR" over Gulf of Aden

The cyclonic storm "SAGAR" over Gulf of Aden moved west- southwestwards with a speed of 11 kmph, and lay centered at 1130 hrs IST of today, the 17th May 2018 over Gulf of Aden near latitude 13.0°N and longitude 48.4°E; about 360 km east-northeast of Aden (Yemen) and 590 km west-northwest of Socotra Islands. It is very likely to intensify further slightly during next 12 hrs. It is very likely to continue to move west-southwestwards during next 48 hrs.

Date/Time(IST)	Position (Lat. °N/ long. °E)	Maximum sustained surface wind speed (kmph)	Category of cyclonic disturbance
17/1130	13.0/48.4	65-75 GUSTING TO 85	CYCLONIC STORM
17/1730	12.9/47.8	70-80 GUSTING TO 90	CYCLONIC STORM
17/2330	12.7/47.2	70-80 GUSTING TO 90	CYCLONIC STORM
18/0530	12.5/46.6	70-80 GUSTING TO 90	CYCLONIC STORM
18/1130	12.3/46.0	65-75 GUSTING TO 85	CYCLONIC STORM
18/2330	12.0/44.7	55-65 GUSTING TO 75	DEEP DEPRESSION
19/1130	11.7/43.4	45-55 GUSTING TO 65	DEPRESSION

Spatial rainfall distribution: Isolated: <25%, A few: 26-50%, Many: 51-75%, Most: 76-100%
Rainfall amount (mm): Heavy rain: 64.5 – 115.5, Very heavy rain: 115.6 – 204.4, Extremely heavy rain: 204.5 or more.

Warning

(a) Wind

Gale winds speed reaching 70-80 kmph gusting to 90 kmph is very likely around the system centre covering Gulf of Aden and adjoining areas of westcentral and southwest Arabian Sea during the next 24 hrs and gradual decrease thereafter.

(b) Sea condition

Sea condition will be high around the system centre covering Gulf of Aden and adjoining areas of westcentral and southwest Arabian Sea during the next 24 hrs.

(c) Fishermen warning

Fishermen are advised not to venture into Gulf of Aden and adjoining areas of westcentral and southwest Arabian Sea during the next 48 hrs.

The next bulletin will be issued at 1730 hrs IST of 17th May 2018.

(Neetha K Gopal)
Scientist-E, RSMC, New Delhi

Copy to: CRS, Pune/ ACWC Chennai/ Mumbai/MC Goa/Thiruvananthapuram/Bengaluru/CWC Ahmedabad.

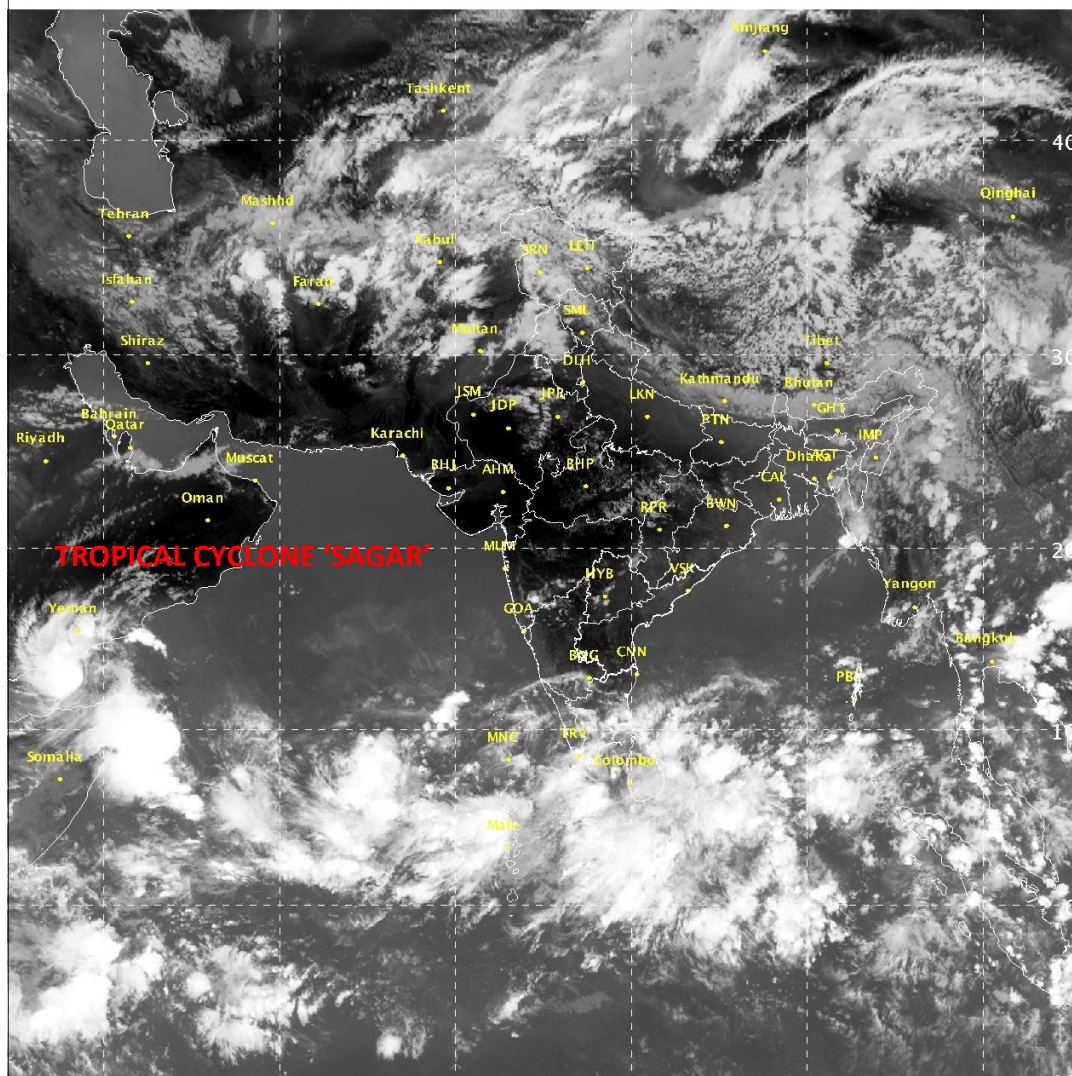
SAT :INSAT-3D IMG

17-05-2018/08:00 GMT

IMG_TIR1 10.8 um

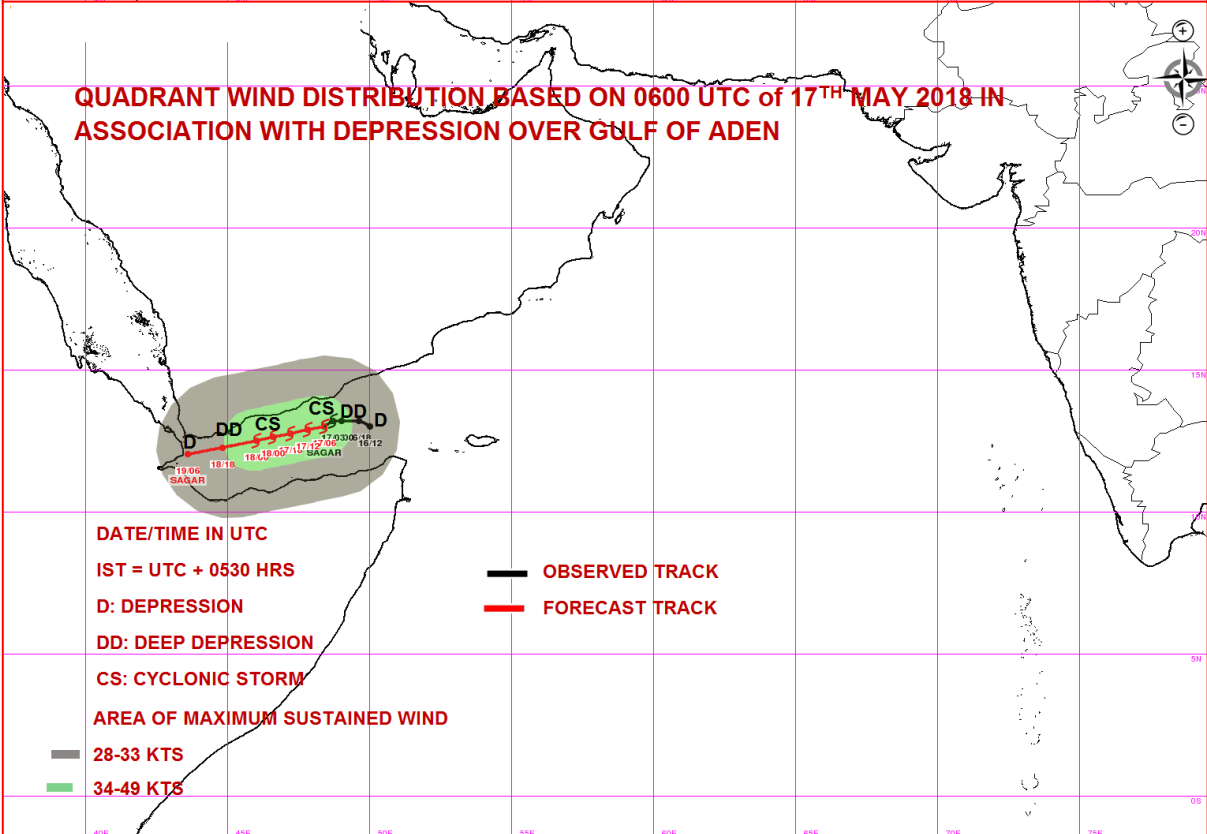
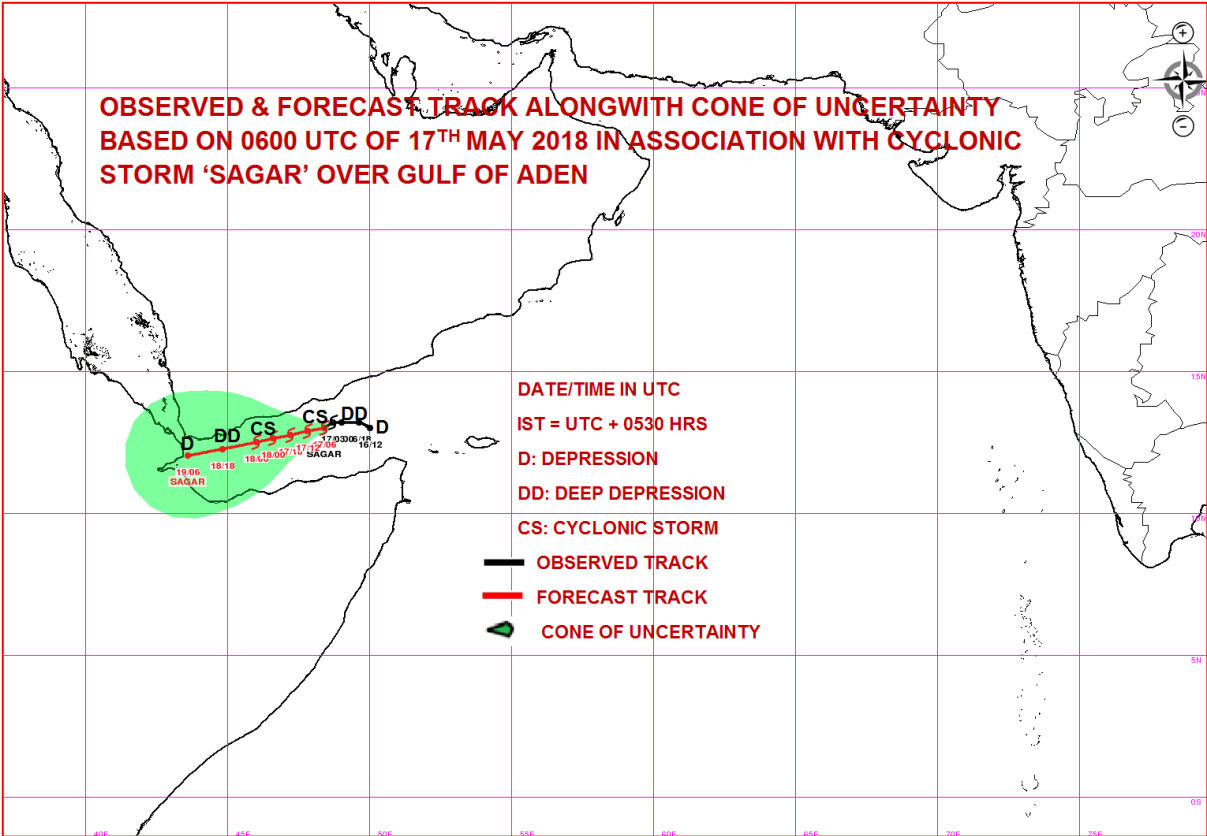
17-05-2018/13:30 IST

L1C Mercator (LINEAR STRETCH: 1.0%)



IMD/Delhi

Spatial rainfall distribution: Isolated: <25%, A few: 26-50%, Many: 51-75%, Most: 76-100%
Rainfall amount (mm): Heavy rain: 64.5 – 115.5, Very heavy rain: 115.6 – 204.4, Extremely heavy rain: 204.5 or more.



Spatial rainfall distribution: Isolated: <25%, A few: 26-50%, Many: 51-75%, Most: 76-100%
Rainfall amount (mm): Heavy rain: 64.5 – 115.5, Very heavy rain: 115.6 – 204.4, Extremely heavy rain: 204.5 or more.